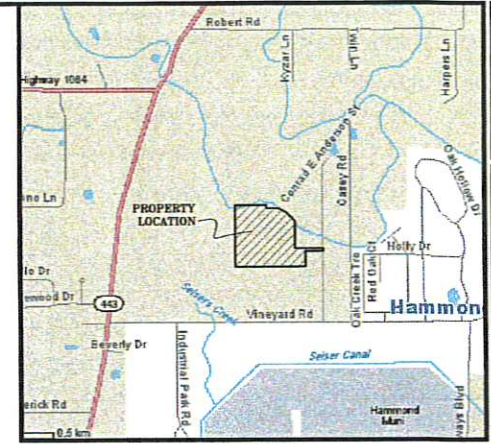
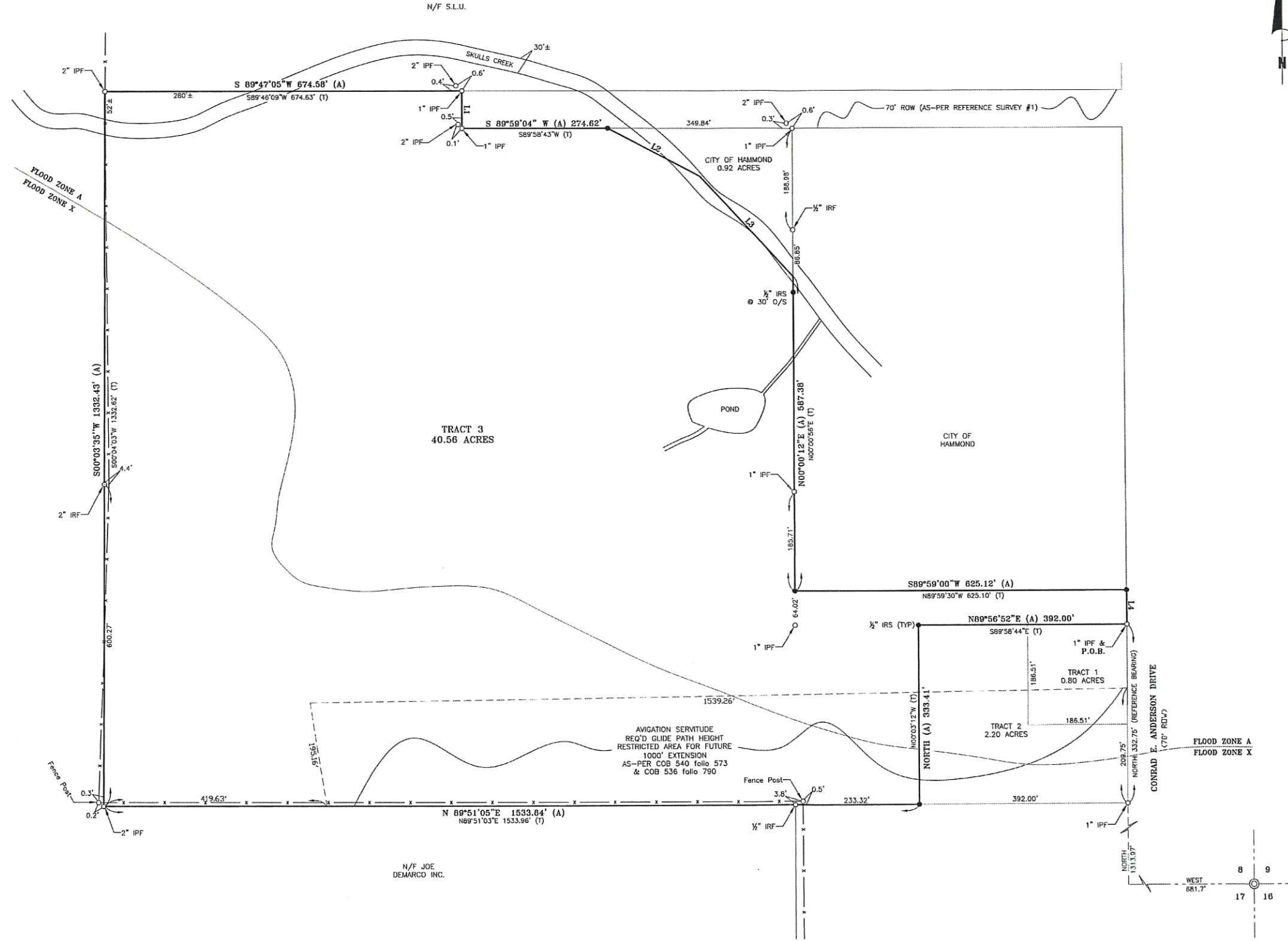


# BOUNDARY MAP



This drawing and design are the property of JOHN E. BONNEAU & ASSOC., INC. They are submitted on the condition that they are not to be used, reproduced, or copied, in whole or in part, or used for furnishing information to others, without the prior written consent of JOHN E. BONNEAU & ASSOC., INC. All common law rights of copyright and otherwise are hereby specifically reserved.

DRAWN BY: JBM  
DATE: 04/24/06

REVISION: \_\_\_\_\_ DATE: \_\_\_\_\_

CHECKED: JEB  
SCALE: 1" = 100'  
SURVEY #: 2006 346

**LEGAL DESCRIPTION**

LEGAL DESCRIPTION OF 40.56 ACRES SITUATED IN SECTION 8, TOWNSHIP 6 SOUTH, RANGE 8 EAST, TANGIPAHOLA PARISH, LOUISIANA

A CERTAIN PIECE OR PORTION OF LAND BEING SITUATED IN SECTION 8, TOWNSHIP 6 SOUTH, RANGE 8 EAST, TANGIPAHOLA PARISH, LOUISIANA, BEING MORE FULLY DESCRIBED AS FOLLOWS:

COMMENCING AT SECTION CORNER COMMON TO SECTIONS 8, 9, 16, AND 17, TOWNSHIP 6 SOUTH, RANGE 8 EAST, TANGIPAHOLA PARISH, LOUISIANA, RUN WEST A DISTANCE OF 681.7 FEET TO A POINT ON THE WEST RIGHT-OF-WAY OF CONRAD EAST ANDERSON DRIVE; THENCE RUN ALONG SAID RIGHT-OF-WAY NORTH A DISTANCE OF 1646.72 FEET TO THE POINT OF BEGINNING;

FROM THE POINT OF BEGINNING CONTINUE NORTH FOR A DISTANCE OF 64.02 FEET TO A POINT; THENCE LEAVING SAID RIGHT-OF-WAY RUN SOUTH 89 DEGREES 59 MINUTES 00 SECONDS WEST (TITLE: NORTH 89 DEGREES 59 MINUTES 30 SECONDS WEST) FOR A DISTANCE OF 625.12 FEET (TITLE: 625.12 FEET) TO A POINT; THENCE RUN NORTH 00 DEGREES 00 MINUTES 12 SECONDS EAST (TITLE: NORTH 00 DEGREES 00 MINUTES 56 SECONDS EAST) FOR A DISTANCE OF 487.38 FEET TO A POINT; THENCE RUN NORTH 43 DEGREES 24 MINUTES 27 SECONDS WEST (TITLE: NORTH 43 DEGREES 20 MINUTES 48 SECONDS WEST) FOR A DISTANCE OF 258.72 FEET TO A POINT; THENCE RUN NORTH 62 DEGREES 41 MINUTES 53 SECONDS WEST (TITLE: NORTH 62 DEGREES 40 MINUTES 50 SECONDS WEST) FOR A DISTANCE OF 152.18 FEET TO A POINT; THENCE RUN SOUTH 89 DEGREES 59 MINUTES 04 SECONDS WEST (TITLE: SOUTH 89 DEGREES 58 MINUTES 43 SECONDS WEST) FOR A DISTANCE OF 274.82 FEET TO A POINT; THENCE RUN NORTH 00 DEGREES 10 MINUTES 23 SECONDS WEST (TITLE: NORTH 00 DEGREES 13 MINUTES 31 SECONDS WEST) FOR A DISTANCE OF 70.06 FEET (TITLE: 70.04 FEET) TO A POINT; THENCE RUN SOUTH 89 DEGREES 47 MINUTES 05 SECONDS WEST (TITLE: SOUTH 89 DEGREES 46 MINUTES 09 SECONDS WEST) FOR A DISTANCE OF 674.58 FEET (TITLE: 674.63 FEET) TO A POINT; THENCE RUN SOUTH 00 DEGREES 03 MINUTES 55 SECONDS WEST (TITLE: SOUTH 00 DEGREES 04 MINUTES 03 SECONDS WEST) FOR A DISTANCE OF 1332.43 FEET (TITLE: 1332.62 FEET) TO A POINT; THENCE RUN NORTH 89 DEGREES 51 MINUTES 05 SECONDS EAST (TITLE: NORTH 89 DEGREES 51 MINUTES 03 SECONDS EAST) FOR A DISTANCE OF 1533.84 FEET (TITLE: 1533.96 FEET) TO A POINT; THENCE RUN NORTH (TITLE: NORTH 00 DEGREES 03 MINUTES 12 SECONDS WEST) FOR A DISTANCE OF 333.41 FEET TO A POINT; THENCE RUN NORTH 69 DEGREES 56 MINUTES 02 SECONDS EAST (TITLE: SOUTH 89 DEGREES 56 MINUTES 44 SECONDS EAST) FOR A DISTANCE OF 392.00 FEET BACK TO THE POINT OF BEGINNING.

SAID PARCEL OF LAND CONTAINS 40.56 ACRES MORE OR LESS.

**LEGEND**

○ = CORNER FOUND (T) = TITLE CALL  
● = 1/2" IRON ROD SET (A) = ACTUAL MEASURED DISTANCE  
-X- = FENCE LINE


**GENERAL NOTES**

- THE LOCATION OF EXISTING UTILITIES ARE SHOWN IN AN APPROXIMATE WAY ONLY. THEY WERE NOT EXCAVATED TO BE ACCURATELY LOCATED. CALL LOUISIANA ONE CALL "DITCH" BEFORE BEGINNING. (1-800-272-3000)
- SUBJECT PROPERTY IS LOCATED IN FLOOD ZONE "A" & "X" AS-PER COMMUNITY F.L.R.M. PANEL NO. 220208 0175 B DATED AUGUST, 23, 2000, WITH A BASE FLOOD ELEVATION OF N/A.
- SERVITUDES SHOWN HEREON ARE NOT NECESSARILY EXCLUSIVE. SERVITUDES OF RECORD AS SHOWN ON TITLE ORIGIN OR TITLE POLICY WILL BE ADDED HEREON UPON REQUEST, AS SURVEYOR HAS NOT PERFORMED ANY TITLE SEARCH OR ABSTRACT.
- THIS SURVEY WAS DONE ON THE GROUND UNDER MY DIRECT SUPERVISION AND CONTROL AND FOUND NO ENCROACHMENTS ON THE SUBJECT PROPERTY UNLESS OTHERWISE NOTED ON SURVEY.
- THIS SURVEY MEETS OR EXCEEDS A CLASS "C" SURVEY AND IS IN ACCORDANCE WITH THE MINIMUM STANDARDS FOR PROPERTY BOUNDARY SURVEYS AS ADOPTED BY THE STATE OF LOUISIANA, BOARD OF REGISTRATION FOR PROFESSIONAL ENGINEERS AND LAND SURVEYORS.
- SETBACK LINES SHALL BE VERIFIED BY OWNER OR CONTRACTOR PRIOR TO ANY CONSTRUCTION, AS AN ABSTRACT HAS NOT BEEN PERFORMED BY THE UNDERSIGNED.

**REFERENCE MAPS:**  
1. SURVEY PLAT BY BODIN & WEBB INC. CONSULTING ENGINEERS & LAND SURVEYORS, WITH A REVISION DATE OF FEBRUARY 25, 1998.  
2. A MINI-SUBDIVISION PLAT BY ROBERT G. BARRILLEAUX FOR RON BOZE DATED JANUARY 21, 2006.

**SURVEYOR'S CERTIFICATION**

I do hereby certify that, as of the date set forth above that, I or others under my direct supervision, have made a careful survey of certain plannable features relating to a portion of ground in Section 8, Township 6 South, Range 8 East, Tangipahola Parish, Louisiana.

  
 JOHN E. BONNEAU  
 Registered Professional Land Surveyor  
 Louisiana Registration No. 4423

DATE: 04/24/06

**SURVEYOR'S INFORMATION**

**JOHN E. BONNEAU & ASSOCIATES, INC.**

Professional Land Surveyors - Planners - Consultants

1011 N. CAUSEWAY BLVD., SUITE 34 - MANDEVILLE, LA. 70471 (985) 826-0808  
 SUDELL (985) 643-2508 - MANDEVILLE (985) 826-3546 - N.O. (504) 456-2042  
 HAMMOND (985) 345-7641 FAX NO. (985) 826-0057 - e-mail: jeb@jebonline.net

**SPECIAL NOTES:**

- TITLE CALLS ARE DERIVED FROM SURVEY PLAT BY BODIN & WEBB INC. CONSULTING ENGINEERS & SURVEYORS, LAST REVISED 02-25-06.
- FLOOD ZONES, SKULLS CREEK WERE ALL DERIVED FROM FLOOD MAPS AND USGS QUAD MAPS.

**LINE TABLE**

NUMBER	ACTUAL BEARING	TITLE BEARING	ACTUAL DISTANCE	TITLE DISTANCE
L1	N 09°16'23" W	N 09°13'51" W	70.06'	70.04'
L2	N 62°41'53" W	N 62°40'50" W	195.15'	
L3	N 43°24'27" W	N 43°22'49" W	256.72'	
L4	NORTH		64.02'	

Survey for: AIRPORT NORTH, L.L.C. RESOURCE BANK, JONES FUSSELL, L.L.P. & CHICAGO TITLE INSURANCE COMPANY  
 Property: 40.56 ACRE TRACT OF LAND LOCATED IN SECTION 8, TOWNSHIP 6 SOUTH, RANGE 8 EAST, TANGIPAHOLA PARISH, LOUISIANA.  
 SHEET NUMBER: 1