

Exhibit E. Chemin 3 Site Property Right of Way Exhibit



CHEMIN - 3 SITE PROPERTY RIGHT OF WAY EXHIBIT

T-11-S R-5-E

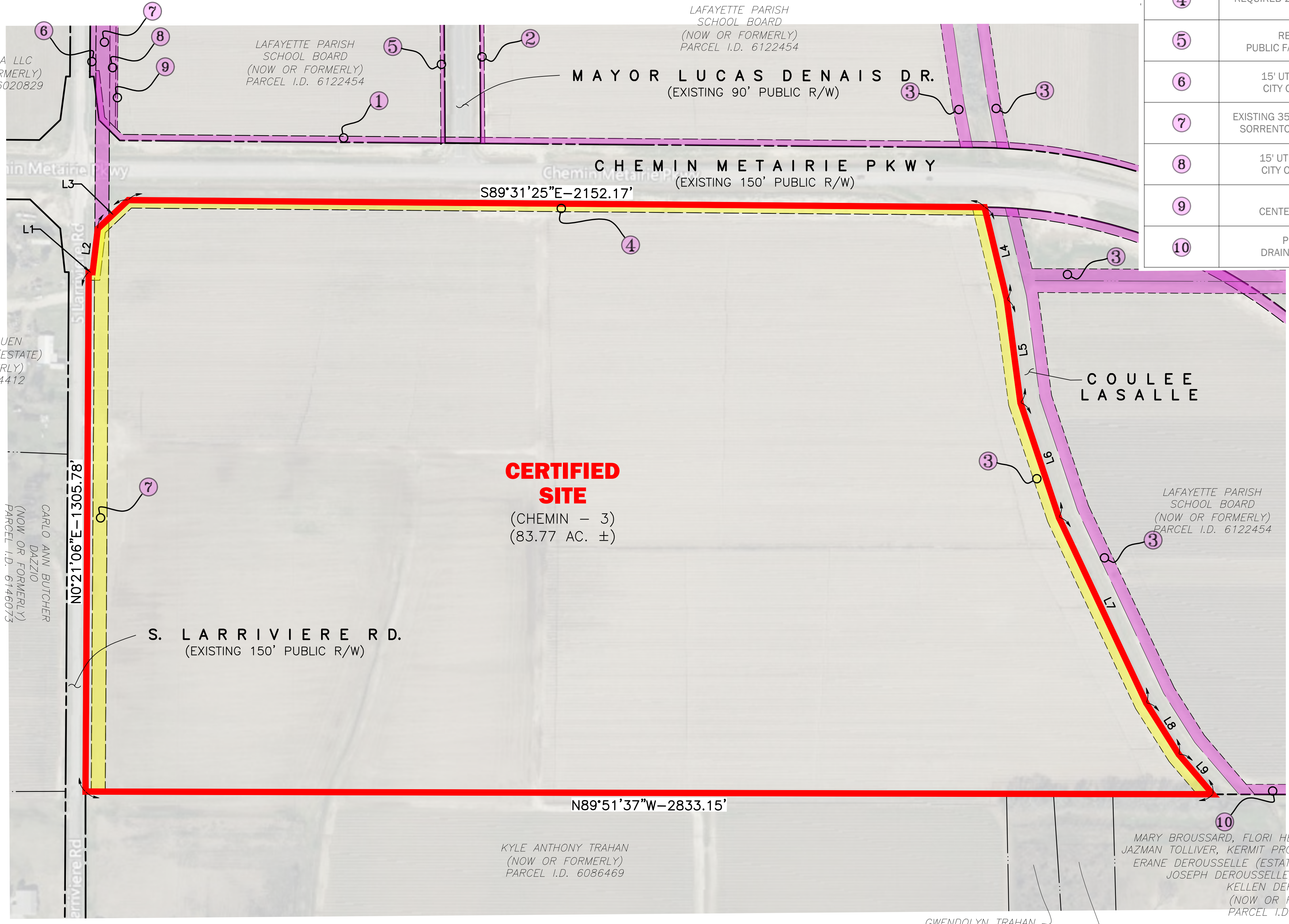


VICINITY MAP
Scale: 1"=3000'±



TITLE ABSTRACT DOCUMENTS				
DOCUMENT DESIGNATION	NAME	REFERENCE	FILE NO.	ONSITE ACREAGE
①	REQUIRED 15' UTILITY SERVITUDE	PER REFERENCE DOCUMENT A	2010-00025638	OFFSITE
②	REQUIRED 10' PUBLIC UTILITIES SERVITUDE	PER REFERENCE DOCUMENT D	2017-00026960	OFFSITE
③	PERMANENT ACCESS SERVITUDE 30' OFF OF TOP BANK	PER REFERENCE DOCUMENT B	2016-00014308	1.10 ACRES ONSITE
④	REQUIRED 20' UTILITY SERVITUDE	PER REFERENCE DOCUMENT A	2010-00025638	1.09 ACRES ONSITE
⑤	REQUIRED 10' PUBLIC FACILITY SERVITUDE	PER REFERENCE DOCUMENT D	2017-00026960	OFFSITE
⑥	15' UTILITY SERVITUDE CITY OF YOUNGVILLE	PER REFERENCE DOCUMENT B	2016-00014308	OFFSITE
⑦	EXISTING 35' PIPELINE SERVITUDE SORRENTO PIPELINE COMPANY	PER REFERENCE DOCUMENT C	2017-0009305	1.14 ACRES ONSITE
⑧	15' UTILITY SERVITUDE CITY OF YOUNGVILLE	PER REFERENCE DOCUMENT B	2016-00014308	OFFSITE
⑨	5' ROW CENTERPOINT ENERGY	PER REFERENCE DOCUMENT C	2017-0009305	OFFSITE
⑩	PERMANENT DRAINAGE SERVITUDE	PER REFERENCE DOCUMENT A	2010-00025638	OFFSITE
TOTAL ONSITE ACREAGE				3.34 ACRES

#	DIR.	DIST.
L1	S89°59'10"E	10.00'
L2	N6°43'54"E	110.00'
L3	N46°39'55"E	105.21'
L4	S13°34'00"E	238.59'
L5	S7°30'20"E	261.70'
L6	S18°29'45"E	304.06'
L7	S25°11'17"E	515.64'
L8	S32°18'02"E	153.00'
L9	S40°28'51"E	132.16'



GENERAL NOTES:

- REFERENCE DOCUMENTS:
 - "PLAT OF SURVEY SHOWING RIGHT OF WAY TO BE ACQUIRED BY THE CITY OF YOUNGVILLE FROM LAFAYETTE PARISH SCHOOL BOARD" BY DOUGLAS A. DOMINGUE R.S., RECORDED IN THE LAFAYETTE PARISH CLERK OF COURTS OFFICE, FILE NO. 2010-00025638
 - "PLAT SHOWING UTILITY & CONSTRUCTION SERVITUDES TO BE ACQUIRED BY THE CITY OF YOUNGVILLE, LA. FROM LAFAYETTE PARISH SCHOOL BOARD" RECORDED IN THE LAFAYETTE PARISH CLERK OF COURT OFFICE, FILE NO. 2016-14308.
 - "CENTERPOINT ENERGY ACQUIRE 5' RIGHT OF WAY FROM LAFAYETTE PARISH SCHOOL BOARD", RECORDED IN THE LAFAYETTE PARISH CLERK OF COURT OFFICE, FILE NO. 2017-9305
 - "RIGHT OF WAY AND SERVITUDES" FOR YOUNGVILLE HIGH SCHOOL ENTRANCE ROAD, BY SHAWN P. MACMENAMIN P.L.S., DATED 4/5/17, RECORDED IN THE LAFAYETTE PARISH CLERK OF COURT OFFICE, FILE NO. 2017-26960
- NO ATTEMPT HAS BEEN MADE BY CSRS, INC. TO VERIFY TITLE, ACTUAL LEGAL OWNERSHIP, DEED RESTRICTIONS, SERVITUDES, EASEMENTS, OR OTHER BURDENS ON THE PROPERTY, OTHER THAN THAT FURNISHED BY THE CLIENT OR HIS REPRESENTATIVE.
- THIS IS NOT A PROPERTY BOUNDARY SURVEY AND IS NOT INTENDED TO MEET THE LOUISIANA STANDARDS OF PRACTICE FOR PROPERTY BOUNDARY SURVEYS. BEARINGS AND DISTANCES OF TRACTS WERE OBTAINED FROM DOCUMENT REFERENCED ABOVE.
- THE COORDINATE SYSTEM USED IS NAD83 LOUISIANA STATE PLANE SOUTH ZONE (US SURVEY FEET). COORDINATES WERE DERIVED BY OVERLAYING THE BOUNDARY ON AN AERIAL PHOTOGRAPH AND ARE WITHIN 100' OF TRUE LOCATION.
- RIGHTS OF WAY, EASEMENTS, AND SERVITUDES SHOWN HEREON HAVE NOT BEEN VERIFIED IN THE FIELD AND ANY SHOWN ARE FOR GENERAL LOCATIVE INFORMATION ONLY.

LEGEND

- CERTIFIED SITE BOUNDARY (83.77 ACRES ±)
- RIGHT OF WAY
- ADJACENT PROPERTY LINE
- UTILITY SERVITUDE
- PIPELINE SERVITUDE
- ONSITE EASEMENT
- OFFSITE ADJACENT EASEMENT

Revisions:

CSRS
a Westwood company
8555 United Plaza Blvd., Baton Rouge, LA 70809
Telephone: 225 769-0546 Fax: 225 767-0060
www.csrsinc.com | westwoods.com

PROPERTY RIGHT OF WAY EXHIBIT
OF
CHEMIN - 3 SITE
LOCATED IN
SECTION 16
T-11-S R-5-E
SOUTHWESTERN LAND DISTRICT
LAFAYETTE PARISH
LOUISIANA
FOR
LED

Date: FEBRUARY 9, 2026
Project Number: 0074023.00
Drawn By: HCL
Checked By: TBO
Sheet:

COMPILED MAP:
THIS IS NOT A PROPERTY BOUNDARY SURVEY AND IS NOT INTENDED TO MEET THE LOUISIANA STANDARDS OF PRACTICE FOR PROPERTY BOUNDARY SURVEYS. BEARINGS AND DISTANCES OF TRACTS WERE OBTAINED FROM REFERENCE DOCUMENTS.
NO DATA HAS BEEN FIELD VERIFIED BY THE SURVEYOR IN RESULT TO THIS MAP.