

211 Industrial Drive N.

253,920 Total Square Footage
3,000 Office Square Footage
Lot Size 15 Acres

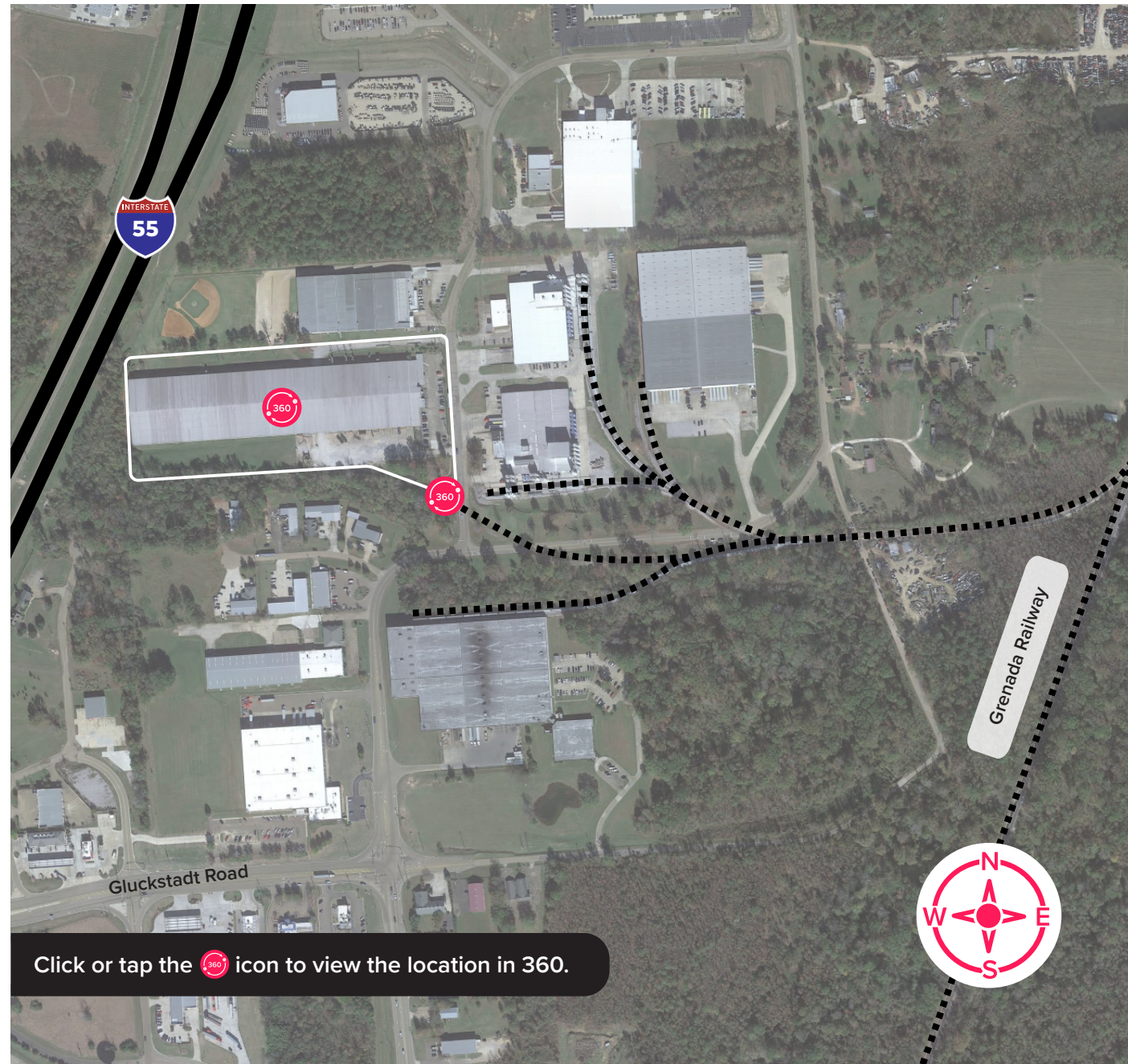
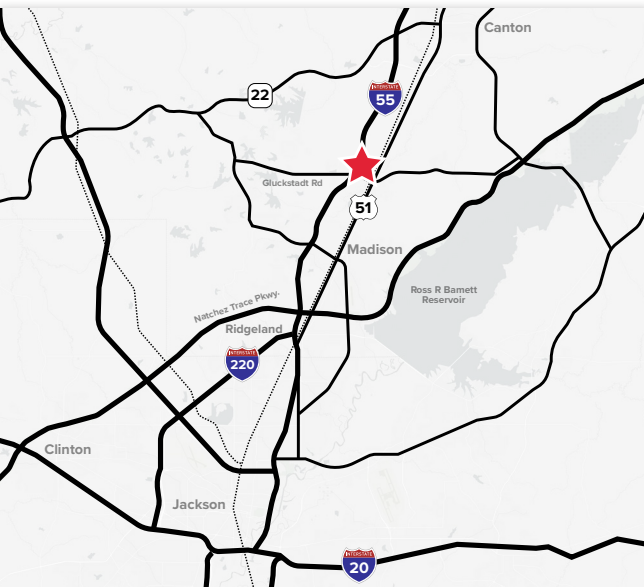
- **Heavy Industrial Zoning**
- **7 years remaining on the master lease**
- **Equipment on site:** seven (7) overhead cranes ranging from 2.5 to 30 ton capacity
- **Warehouse ceiling height:** 23-26'
- **1 Covered dock door**
- **5 Grade level doors (oversized)**
- **New LED lighting throughout facility**
- **Potential to re-activate rail spur at property**
- **Less than 1 mile from I-55**



SITE SPECS



INTERACTIVE MAP



211 Industrial Drive N.

253,920 Total Square Footage
3,000 Office Square Footage
Lot Size 15 Acres

Joseph P. Deason

Executive Director
135 Mississippi Parkway
Canton, MS 39110
P: 601-605-0368 (office)
E: jdeason@madisoncountyped.com

Stacy Lester

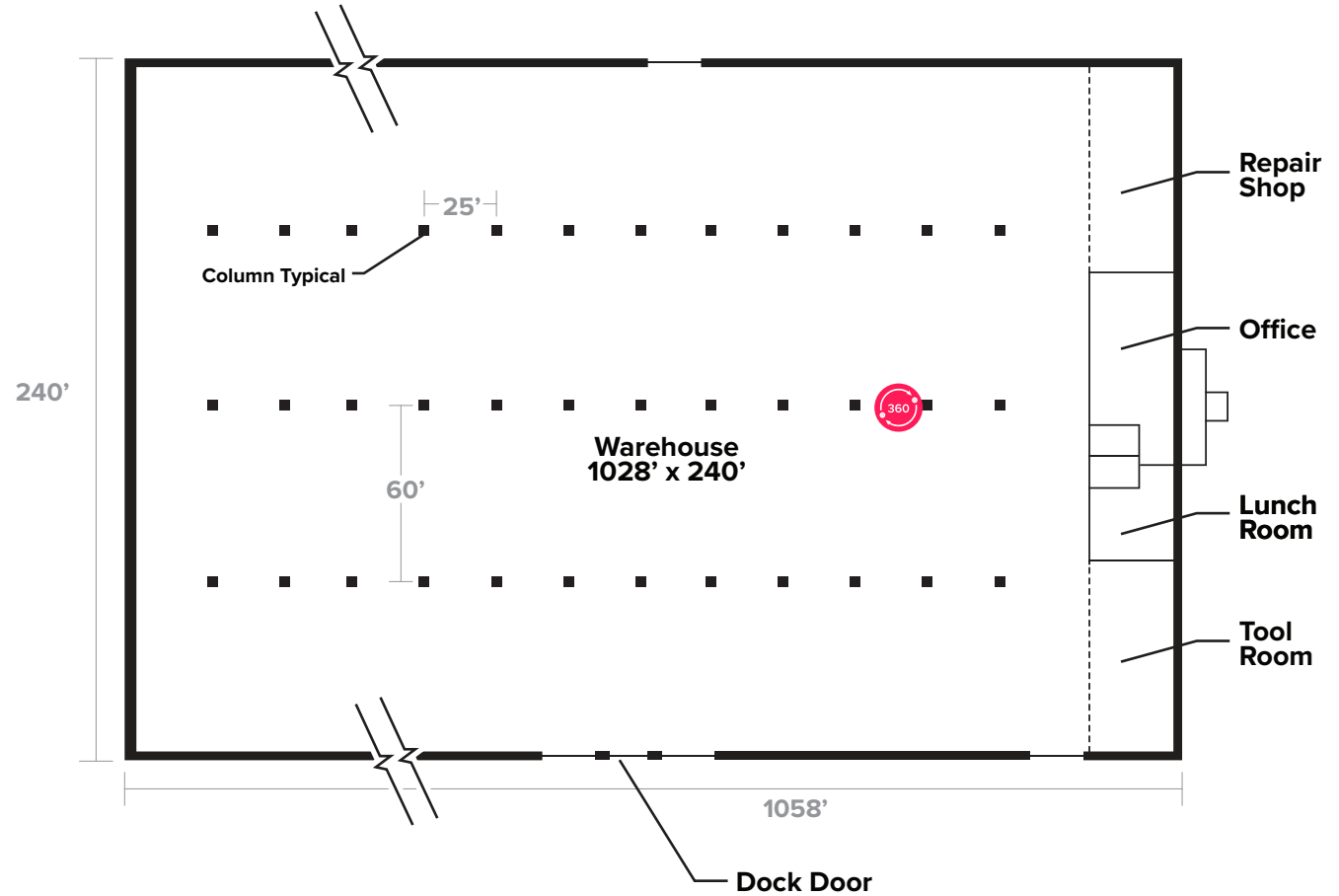
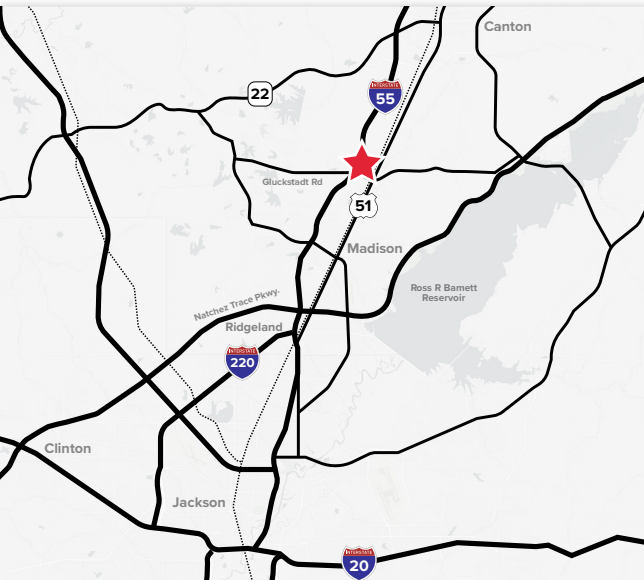
Project Manager
Entergy Mississippi Business Development
P: 601-310-5459 (office)
E: sleste1@entergy.com




SITE SPECS



INTERACTIVE MAP



Click or tap the  icon to view the location in 360.

Drawing not to scale.

