

EXHIBIT T

PROPERTY BOUNDARY & LEGAL DESCRIPTION

EXHIBIT T - PROPERTY BOUNDARY & LEGAL DESCRIPTION

Beginning at a point located on the southerly line of LA Highway 433, said point being the northwest corner of Parcel D;

Thence proceed S 22°45'00" W, along west line of said Parcel D, a distance of 610.80 feet to a point;

Thence proceed S 67°15'00" E, along south line of said Parcel D, a distance of 254.19 feet to a point;

Thence proceed S 87°30'09" E, along south line of said Parcel D, a distance of 210.00 feet to a point on the west line of U.S. Highway 90, and lying in a nontangent curve to the right having a radius of 913.27 feet and a chord bearing S 15°25'31" W a chord distance of 318.57 feet;

Thence proceed in a southwesterly direction, along said west line of U.S. Highway 90, and along said curve to the right an arc length of 320.21 feet to a point;

Thence continuing along said west line of U.S. Highway 90, S 41°23'00" W, a distance of 302.23 feet to a point;

Thence proceed N 77°35'30" W, a distance of 311.24 feet to a point;

Thence proceed N 85°18'00" W, a distance of 85.20 feet to a point;

Thence proceed S 36°34'00" W, a distance of 114.80 feet to a point on the north meander line of Rigolets Pass;

Thence along the meanders of Rigolets Pass the following:

N 50°36'46" W a distance of 79.21 feet;
N 67°26'32" W a distance of 51.20 feet;
N 71°39'20" W a distance of 252.58 feet;
S 89°25'17" W a distance of 132.56 feet;
S 78°39'50" W a distance of 182.44 feet;
N 34°18'28" W a distance of 193.24 feet;
N 53°53'10" W a distance of 128.43 feet;
N 58°20'31" W a distance of 126.53 feet;
N 25°17'26" W a distance of 168.10 feet;
N 38°09'22" W a distance of 143.05 feet;
N 71°38'44" W a distance of 125.37 feet;
N 70°48'01" W a distance of 125.24 feet;

Thence N 20°25'57" E, departing said north meander line of Rigolets Pass, a distance of 369.75 feet to a point lying in a nontangent curve to the left having a radius of 50.00 feet and a chord bearing N 77°02'43" E a chord distance of 72.76 feet;

EXHIBIT T - PROPERTY BOUNDARY & LEGAL DESCRIPTION

Thence proceed in a northeasterly direction, along said curve to the left, an arc length of 81.48 feet to a point of reverse curve to the right having a radius of 175.00 feet and a chord bearing N 43°47'52" E a chord distance of 81.32 feet;

Thence proceed in a northeasterly direction, along the arc of said curve a distance of 82.07 feet to the point of tangent;

Thence proceed N 57°13'56" E, a distance of 486.30 feet to a point of a curve to the left having a radius of 125.00 feet and a chord bearing N 26°13'42" E a chord distance of 128.77 feet;

Thence proceed in a northeasterly direction, along the arc of said curve to the left, a distance of 135.28 feet to a point;

Thence proceed N 16°34'57" E, a distance of 127.35 feet to a point;

Thence proceed N 49°44'49" E, a distance of 140.98 feet to a point lying on the southerly line of LA Highway 433;

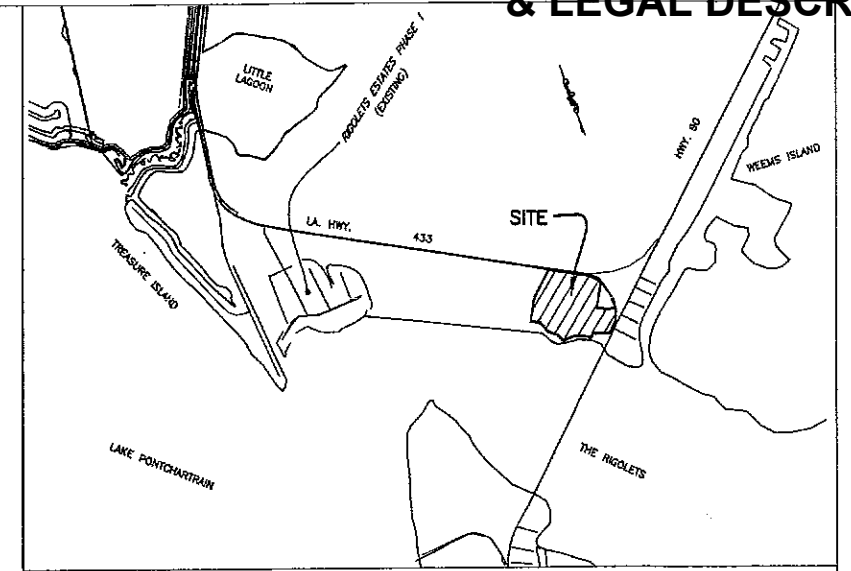
Thence proceed S 67°15'00" E, along said southerly line of LA Highway 433, a distance of 756.03 feet to a point of a curve to the right having a radius of 913.27 feet and a chord bearing S 53°32'42" E, a chord distance of 432.75 feet;

Thence proceed in a southeasterly direction, continuing along said southerly line of LA Highway 433 and along the arc of said curve to the right a distance of 436.90 feet to the point of beginning.

The above described property contains 2,266,242 square feet or 52.03 acres.

EXHIBIT T - PROPERTY BOUNDARY & LEGAL DESCRIPTION

- 1) THE LOCATIONS OF UNDERGROUND AND OTHER NONVISIBLE UTILITIES SHOWN HEREON HAVE BEEN DETERMINED FROM DATA EITHER FURNISHED BY THE AGENCIES CONTROLLING SUCH DATA AND/OR EXTRACTED FROM RECORDS MADE AVAILABLE TO US BY THE AGENCIES CONTROLLING SUCH RECORDS. WHERE FOUND, THE SURFACE FEATURES OF LOCATIONS ARE SHOWN. THE ACTUAL NONVISIBLE LOCATIONS MAY VARY FROM THOSE SHOWN HEREON. EACH AGENCY SHOULD BE CONTACTED RELATIVE TO THE PRECISE LOCATION OF ITS UNDERGROUND INSTALLATION PRIOR TO ANY RELIANCE UPON THE ACCURACY OF SUCH LOCATIONS SHOWN HEREON, INCLUDING PRIOR TO EXCAVATION AND DIGGING.
- 2) THE SERVITUDES SHOWN ON THIS PLAN ARE LIMITED TO THOSE FURNISHED US AND THERE IS NO REPRESENTATION THAT ALL APPLICABLE SERVITUDES ARE REFLECTED OR SHOWN HEREON. THE SURVEYOR HAS MADE NO TITLE SEARCH OR PUBLIC RECORD SEARCH IN COMPILING THE DATA FOR THIS PLAN.
- 3) THE PERIMETER SHOWN SHALL NOT CONSTITUTE A LEGAL OPINION OF TITLE, AND SHALL NOT BE RELIED UPON FOR THAT PURPOSE. THERE IS NO WARRANTY THAT IT CONFORMS TO THE LEGAL TITLE, AND WAS MADE SOLELY ACCORDING TO THE INFORMATION PROVIDED THE SURVEYOR.
- 4) CERTAIN FEATURES, I.E., FENCES, WALLS, ETC. MAY BE EXAGGERATED IN SCALE FOR CLARITY. DIMENSIONS SHOW ACTUAL LOCATION.
- 5) BEARINGS AND DISTANCES SHOWN HERE ON ARE BASED UPON RIGHT OF WAY SURVEY PREPARED BY KREBS, LaSALLE, LEMIEUX CONSULTANTS, INC., DATED 2/12/09, JOB NO. 08-00243



VICINITY MAP
1" = 2000'

Beginning at a point located on the southerly line of LA Highway 433, said point being the northwest corner of Parcel D;

Thence proceed S 22°45'00" W, along west line of said Parcel D, a distance of 510.80 feet to a point;

Thence proceed S 67°15'00" E, along south line of said Parcel D, a distance of 254.19 feet to a point;

Thence proceed S 87°30'09" E, along south line of said Parcel D, a distance of 210.00 feet to a point on the west line of U.S. Highway 90, and lying in a nontangent curve to the right having a radius of 913.27 feet and a chord bearing S 19°25'31" W a chord distance of 318.57 feet;

Thence proceed in a southeasterly direction, along said west line of U.S. Highway 90, and along said curve to the right an arc length of 320.21 feet to a point;

Thence continuing along said west line of U.S. Highway 90, S 41°23'00" W, a distance of 302.23 feet to a point;

Thence proceed N 77°35'30" W, a distance of 311.24 feet to a point;

Thence proceed N 85°18'00" W, a distance of 85.20 feet to a point;

Thence proceed S 35°34'00" W, a distance of 114.80 feet to a point on the north meander line of Rigolets Pass;

Thence along the meanders of Rigolets Pass the following:
 N 50°35'45" W a distance of 79.21 feet;
 N 57°25'32" W a distance of 51.20 feet;
 N 71°39'20" W a distance of 252.58 feet;
 S 89°25'17" W a distance of 132.58 feet;
 S 78°39'50" W a distance of 182.44 feet;
 N 34°18'28" W a distance of 183.24 feet;
 N 53°43'10" W a distance of 128.43 feet;
 N 58°40'31" W a distance of 128.53 feet;
 N 25°17'26" W a distance of 168.10 feet;
 N 38°09'22" W a distance of 143.05 feet;
 N 71°38'44" W a distance of 125.37 feet;
 N 70°48'01" W a distance of 125.24 feet;

Thence N 20°25'57" E, departing said north meander line of Rigolets Pass, a distance of 389.75 feet to a point lying in a nontangent curve to the left having a radius of 50.00 feet and a chord bearing N 77°02'43" E a chord distance of 72.75 feet;

Thence proceed in a northeasterly direction, along said curve to the left, an arc length of 81.48 feet to a point of reverse curve to the right having a radius of 175.00 feet and a chord bearing N 43°47'52" E a chord distance of 81.32 feet;

Thence proceed in a northeasterly direction, along the arc of said curve a distance of 82.07 feet to the point of tangent;

Thence proceed N 57°13'56" E, a distance of 486.30 feet to a point of a curve to the left having a radius of 125.00 feet and a chord bearing N 25°13'42" E a chord distance of 128.77 feet;

Thence proceed in a northeasterly direction, along the arc of said curve to the left, a distance of 135.28 feet to a point;

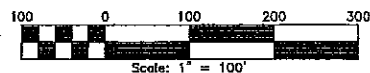
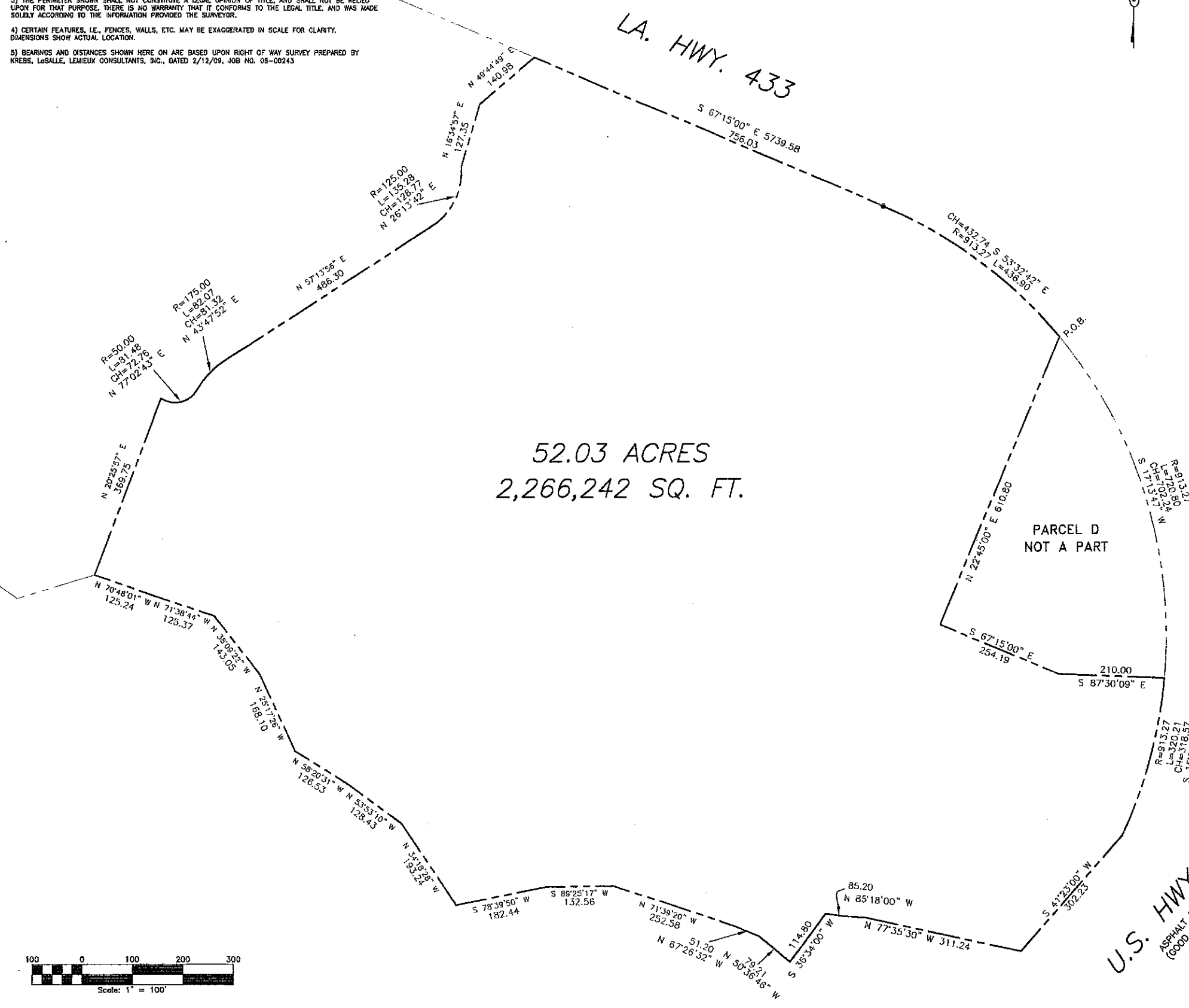
Thence proceed N 16°34'57" E, a distance of 127.35 feet to a point;

Thence proceed N 49°44'49" E, a distance of 140.88 feet to a point lying on the southerly line of LA Highway 433;

Thence proceed S 67°15'00" E, along said southerly line of LA Highway 433, a distance of 756.03 feet to a point of a curve to the right having a radius of 913.27 feet and a chord bearing S 53°32'42" E, a chord distance of 432.75 feet;

Thence proceed in a southeasterly direction, continuing along said southerly line of LA Highway 433 and along the arc of said curve to the right a distance of 436.90 feet to the point of beginning.

The above described property contains 2,266,242 square feet or 52.03 acres.



REVISIONS		
NO.	DESCRIPTION	DATE

BOUNDARY SURVEY
RIGOLETS ESTATES
 PORTION OF SECTION 37, T10S-R14E &
 SECTION 37, T10S-R15E, J. S. DUFFOSAT CLAIM
 WARD 8
 ST. TAMMANY PARISH, LA.

KREBS, LaSALLE, LEMIEUX, CONSULTANTS, INC.
 ENGINEERING • PLANNING • SURVEYING • HYDROLOGY • ENVIRONMENTAL
 3013 27TH STREET METAIRIE, LA. 70002 (504)837-9470
 2107 N. CAUSEWAY BLVD. SUITE F, MANDEVILLE, LA. 70448 (504)624-5125

DATE: FEBRUARY 22, 2011 SCALE: 1" = 100' DRAWING NO. 1 OF 1
 PROJECT NO.: 404-0076 DRAWN BY: S.B. CHECKED BY:
 JOB NO.: 404-0076 FILE NO.:

J.L.R. G:\DWG\404-0076-Rigolets Estates Land Use Plan\Shovel Ready Certification\Land Use Plan 11-12-07 Exhibit2.dwg\Layout: Model Feb 23, 2011 3:35PM