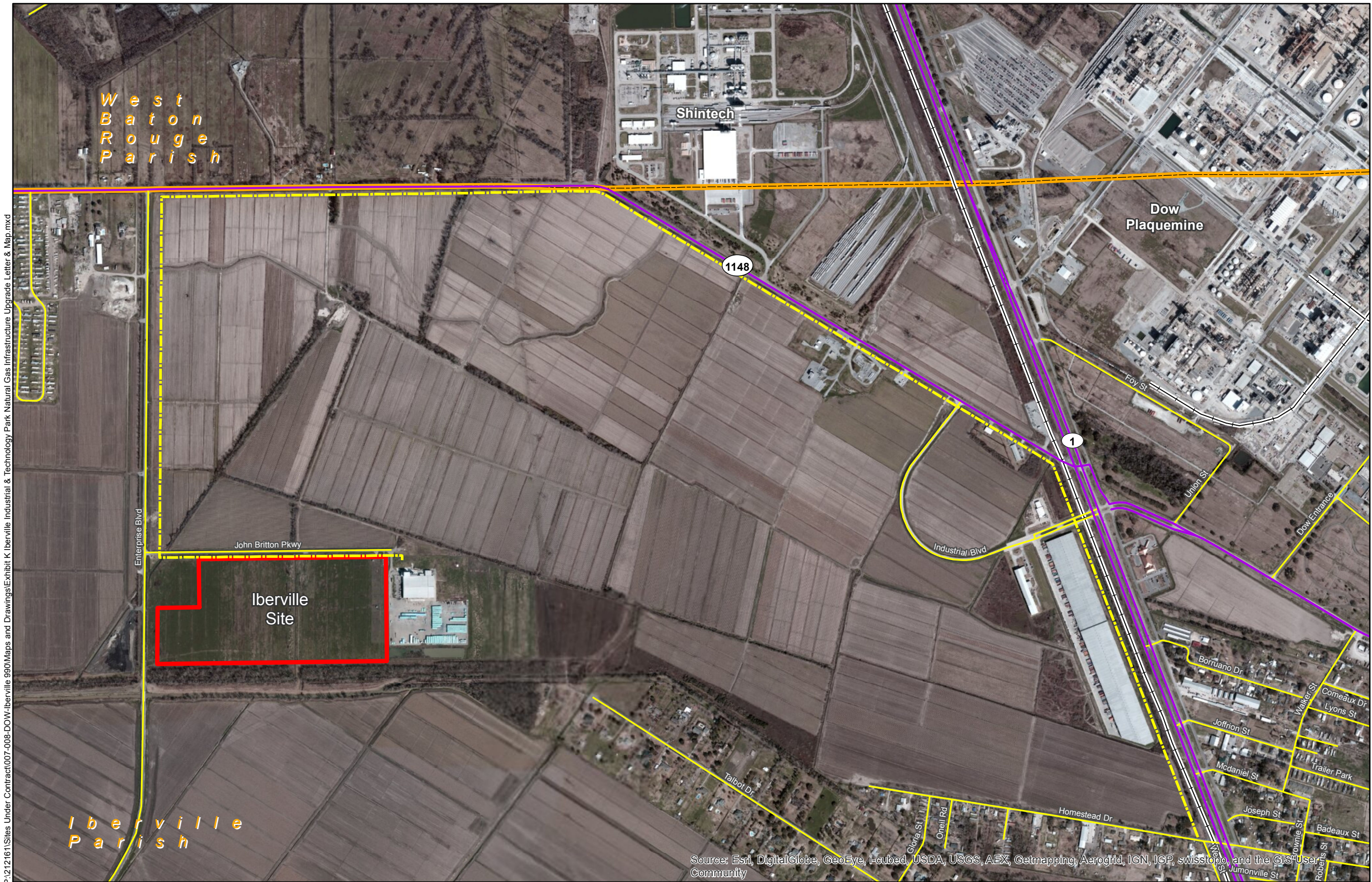
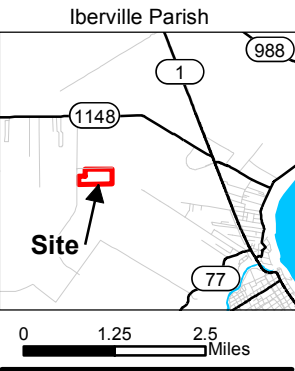
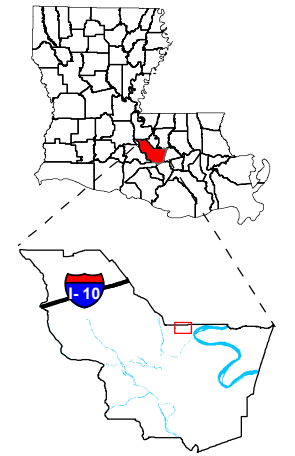


Exhibit K. Iberville Industrial & Technology Park Natural Gas Infrastructure Map



Project:
**Site Exhibit for
Iberville Site
Iberville Parish, LA**

Client:
BRAC



- Legend:**
- Existing 2" Natural Gas Distribution Line
 - State Highway
 - Local Road
 - Railroad
 - Iberville Site
 - Parish Boundary



Source:
GIS features acquired from public domain state and federal data sources (LDOTD, GNIS, LOSCO, US Census Bureau).

| | |
|-----------------|---------------|
| Date: | 11/26/2013 |
| Project Number: | 212161.20.008 |
| Drawn By: | MMS |
| Checked By: | TMG |

CSRS
IMAGINE SHAPE DELIVER
6767 Perkins Road Suite 200 Baton Rouge, LA 70808
Telephone: 225 769-0546 Fax: 225 767-0060
www.csrsonline.com

- General Notes:
1. No attempt has been made by CSRS, Inc. to verify title, actual legal ownership, deed restrictions, servitudes, easements, or other burdens on the property, other than that furnished by the client or his representative.
 2. Railroad and Highway data obtained from 2013 TIGER datasets via U.S. Census Bureau at <ftp://ftp2.census.gov/geo/tiger/TIGER2013>.
 3. Utility information obtained from Iberville Parish Utility and Louisiana One Call.
 4. Exact field location has not been determined by survey. The lines shown are an approximate representation only and may have been offset for depiction purposes.

