

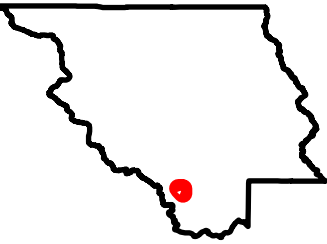
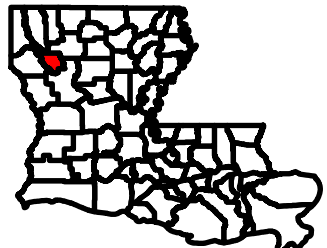
# Exhibit Z: Red River Parish Port Site National Wetlands Inventory Map



# Red River Port Site National Wetlands Inventory Map

Site Exhibit for  
Red River Parish Port Site  
Red River Parish

## NLEP



## Legend

Site Boundary  
(±69.23 ac.)

### National Wetland Inventory

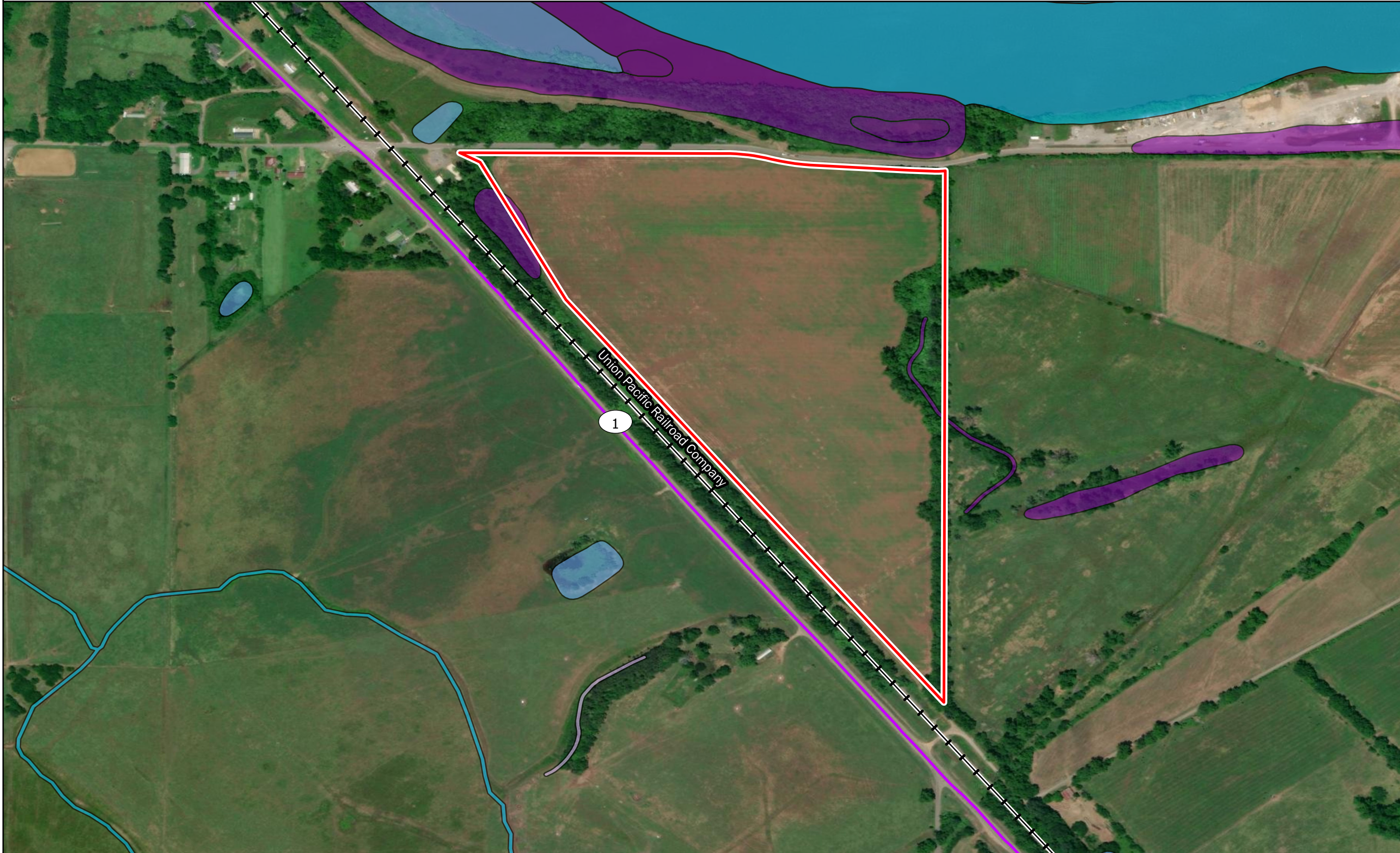
- Freshwater Emergent Wetland
- Freshwater Forested/Shrub Wetland
- Freshwater Pond
- Riverine

### Major Road

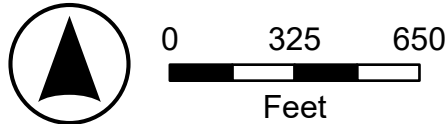
- Interstate
- US Highway
- State Highway
- Railroad



Date: 6/17/2024  
Project Number: 216269  
Drawn By: BMS  
Checked By: EEB



General Notes:  
 1. The information presented herein is for planning purposes only. Further detailed due diligence MUST be completed prior to making decisions regarding the site.  
 2. No attempt has been made by CSRS, Inc. to verify site boundary, title, actual legal ownership, deed restrictions, servitudes, easements, or other burdens on the property, other than that furnished by the client or his representative.  
 3. Transportation data from 2023 TIGER datasets via U.S. Census Bureau at <https://www.census.gov/geographies/mapping-files/time-series/geo/tiger-line-file.html>.  
 4. Aerial imagery is compiled from multiple different sources to create one cohesive image and may not reflect current ground conditions.  
 5. The U.S. Fish & Wildlife Service (FWS) National Wetland Inventory (NWI) data is from the website: <https://www.fws.gov/program/national-wetlands-inventory/wetlands-mapper>.



P:\216269\017 - Red River Parish Port\CAD\GIS\_templates\GIS\Red River National