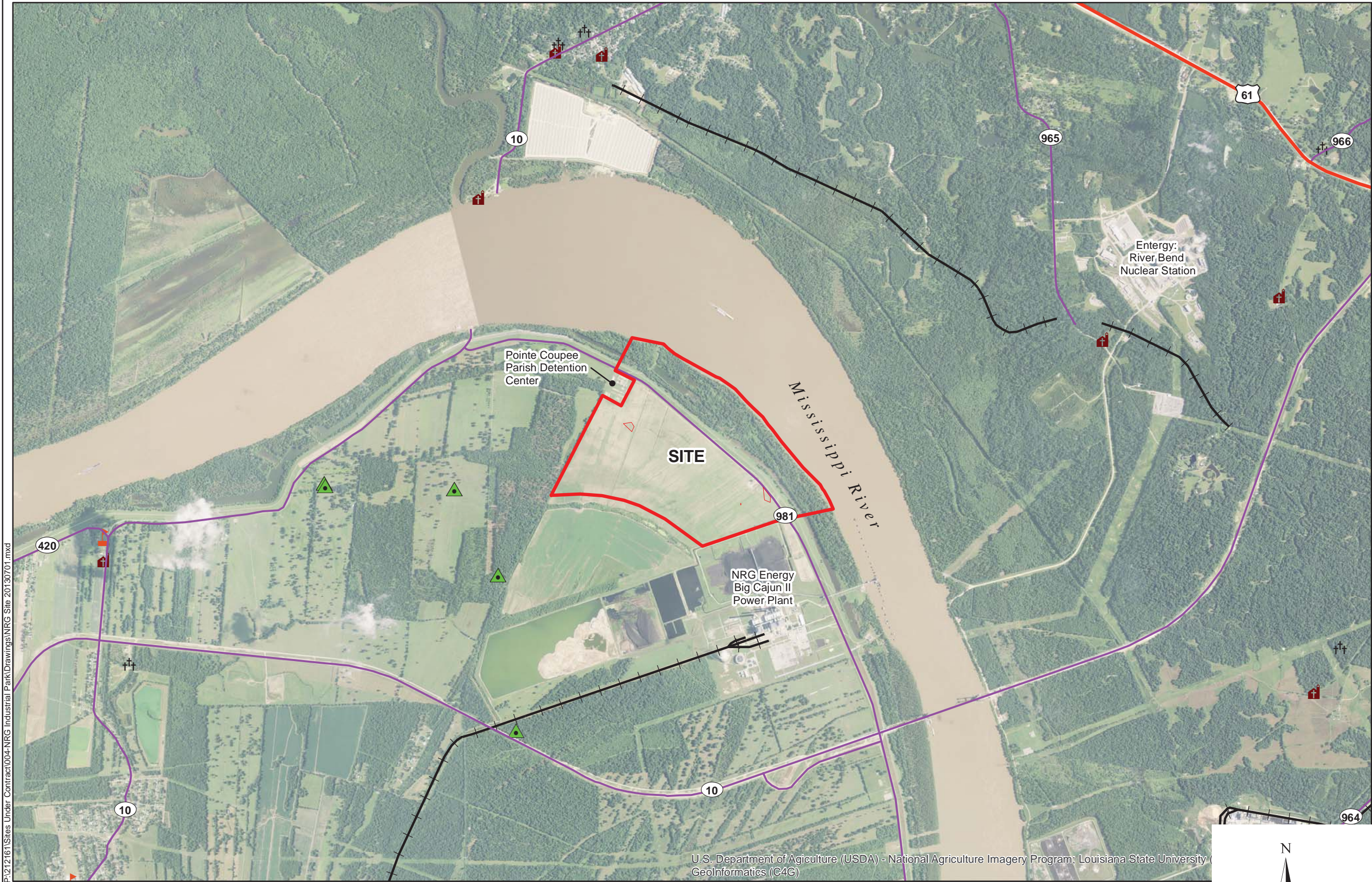


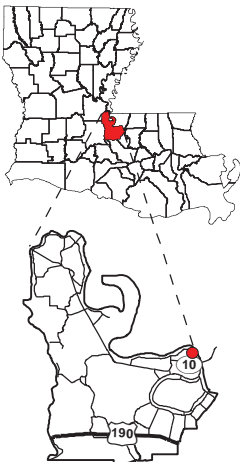
Exhibit O. NRG Industrial Park Roadway Transportation Infrastructure Map



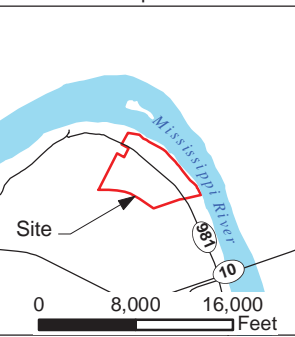
Site Exhibit for
NRG Industrial Park
Pointe Coupee Parish, LA

Client:

BRAC



Pointe Coupee Parish



Legend:

- Site Boundary (640.00± Ac.)
- Archaeological Site (2.20± Ac.)
- Interstate Highway
- U.S. Highway
- State Highway
- Railroad
- School
- Church
- Cemetery
- O & G Well



Source:
GIS features acquired from public domain
state and federal data sources (LDOTD,
GNIS, LOSCO, US Census Bureau).

Date:	7/10/2013
Project Number:	212161.004
Drawn By:	JAY
Checked By:	TMG

CSRS
IMAGINE SHAPE DELIVER
6767 Perkins Road Suite 200 Baton Rouge, LA 70808
Telephone: 225 769-0546 Fax: 225 767-0060
www.csrsonline.com

- General Notes:
1. No attempt has been made by CSRS, Inc. to verify title, actual legal ownership, deed restrictions, servitudes, easements, or other burndens on the property, other than that furnished by the client or his representative.
 2. Exact locations of oil and gas wells, churches, cemeteries, and schools has not been field verified and is for general locative information only.
 3. Railroad and Highway data obtained from LA DOTD via Atlas: The Louisiana Statewide GIS at <http://atlas.lsu.edu>.

