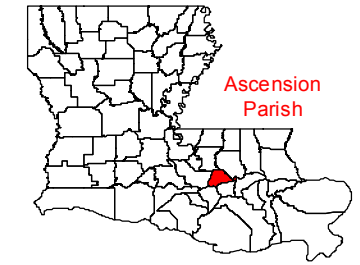
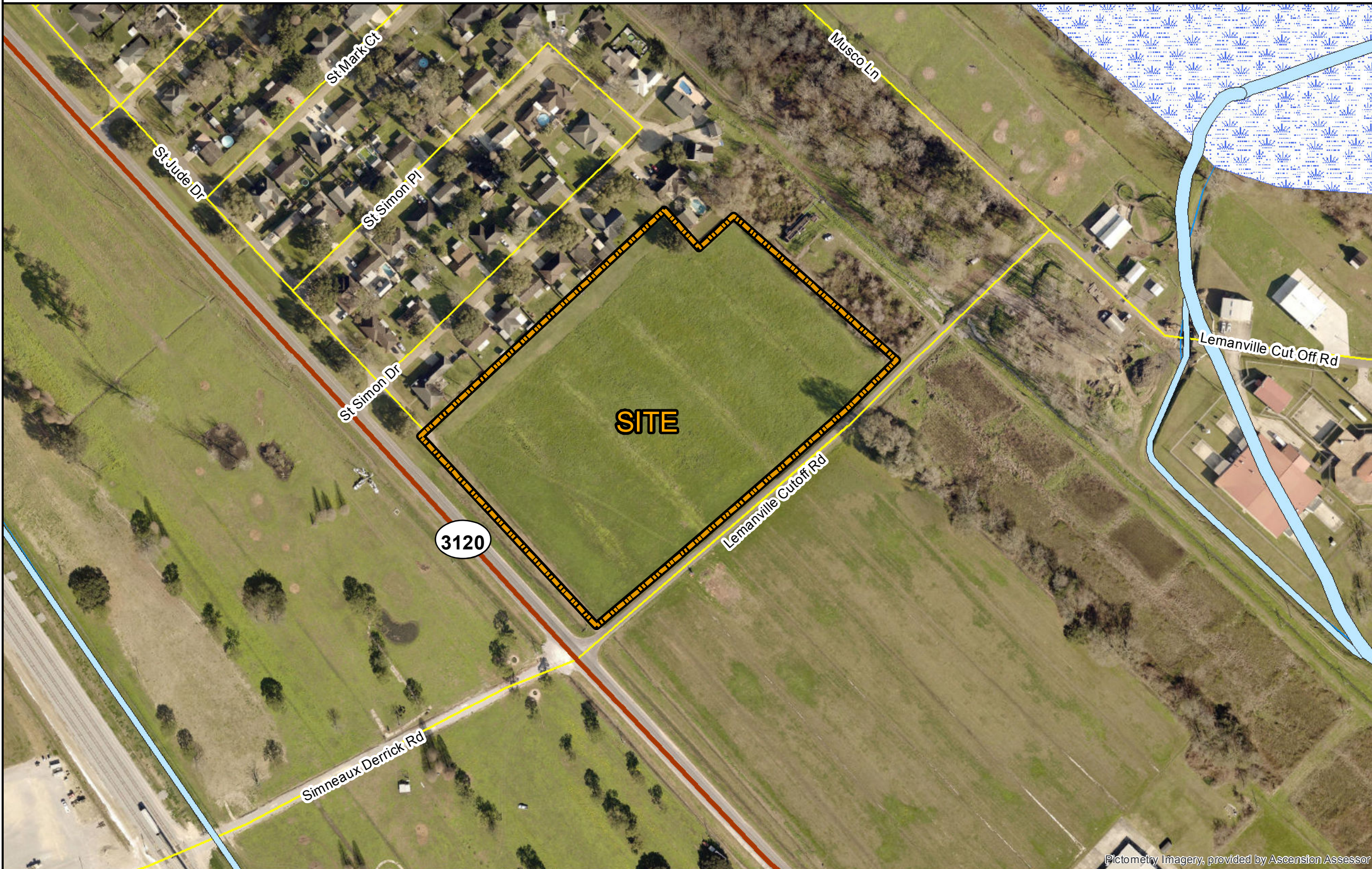


Exhibit Q. Foti - Highway 3120 N National Wetlands Inventory
Map




Foti - Highway 3120 N National Wetlands Inventory Map

Document Path: R:\DWG\16-000\16-392\Foti Sites\Foti Sites\Foti - Hwy 3120 N\Maps\Program Application Exhibits\Exhibit C - National Wetlands Inventory Map.mxd



LEGEND

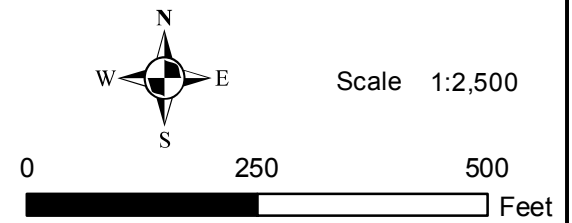
-  Foti - Highway 3120 N (± 9.67 Ac.)
- Wetlands Type**
-  Freshwater Forested/Shrub Wetland
-  Riverine
- Existing Roadway**
-  Highway
-  Local Road
-  Streams



SITE NAME: Foti - Highway 3120 N
 Drawn By: CDS
 Checked By: GJB
 Date: 12/18/2017

General Notes:
 1. The information presented herein was obtained from various resources and should be considered preliminary.
 2. No attempt has been made by Duplantis Design Group, PC to verify site boundary, title, actual legal ownership, deed restrictions, servitudes, easements, or other burdens on the property.

References:
 1. 2017 Aerial imagery from Ascension Parish Assessors website
 2. Site boundary from Harold J. Terracina, Inc.
 3. Transportation data from U.S. Census Bureau
 4. Wetlands data from National Wetlands Inventory




8352 Bluebonnet Blvd.
 Baton Rouge, LA 70810
 Phone: 225-751-4490
 www.ddgpc.com

Pictometry Imagery, provided by Ascension Assessor