

Exhibit BB.

Lacombe Business Park

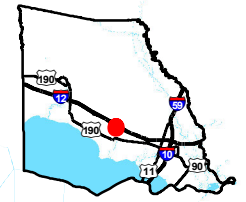
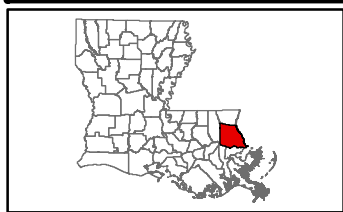
All Utilities Infrastructure Map



Lacombe Business Park All Utilities Infrastructure Map

Lacombe Business Park
St. Tammany Parish, LA

St. Tammany Corporation

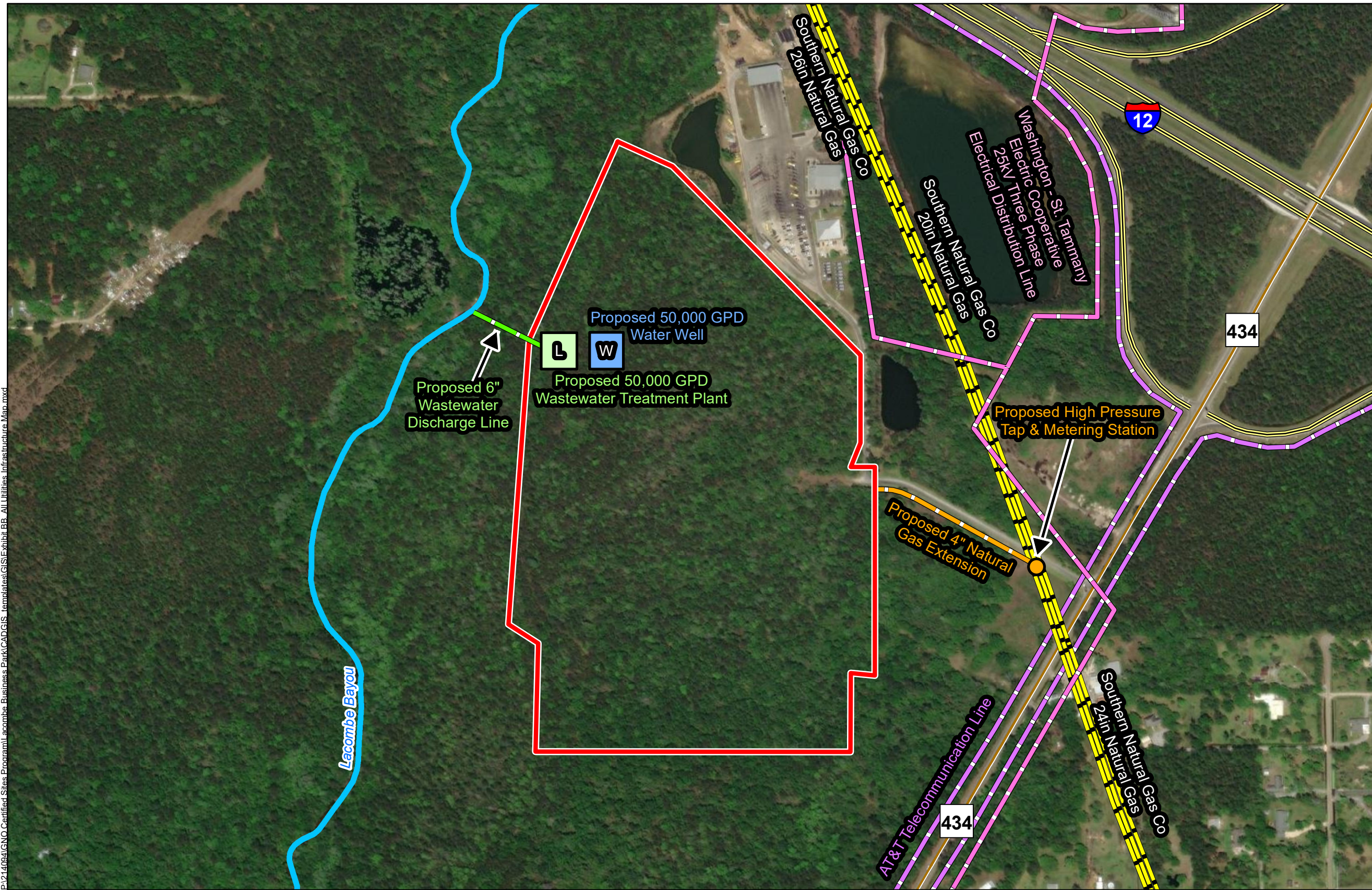


St. Tammany Parish

LEGEND

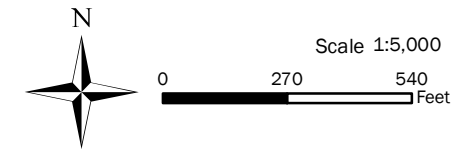
- Site Boundary (69.33± ac.)
- Stream
- AT&T Telecommunication Line
- Washington - St. Tammany Electric Cooperative 25kV Three Phase Electrical Distribution Line
- Proposed 4" Natural Gas Extension
- Proposed High Pressure Tap & Metering Station
- Proposed 6" Wastewater Discharge Line
- L Proposed 50,000 GPD Wastewater Treatment Plant
- W Proposed 50,000 GPD Water Well
- National Pipeline Mapping System**
- NATURAL GAS
- Existing Roadway**
- Interstate
- Rural State Highway

Date:	6/4/2024
Project Number:	214094
Drawn By:	BMS
Checked By:	EEB



General Notes:

1. No attempt has been made by CSRS, Inc. to verify site boundary, title, actual legal ownership, deed restrictions, servitudes, easements, or other burdens on the property, other than that furnished by the client or his representative.
2. Transportation data from 2013 TIGER datasets via U.S. Census Bureau at [ftp://ftp2.census.gov/geo/tiger/TIGER2013](http://ftp2.census.gov/geo/tiger/TIGER2013).
3. Utility information from visual inspection and/or the individual utility operators. Exact field location has not been determined by survey. The lines shown are an approximate representation only and may have been offset for depiction purposes.
4. 2015 aerial imagery from USDA-APFO National Agricultural Inventory Project (NAIP) and may not reflect current ground conditions.



P:\214094\GNO_Certified Sites Proram\lacombe Business Park\CAD\GIS_templates\GIS\Exhibit_BB_All Utilities Infrastructure Map.mxd