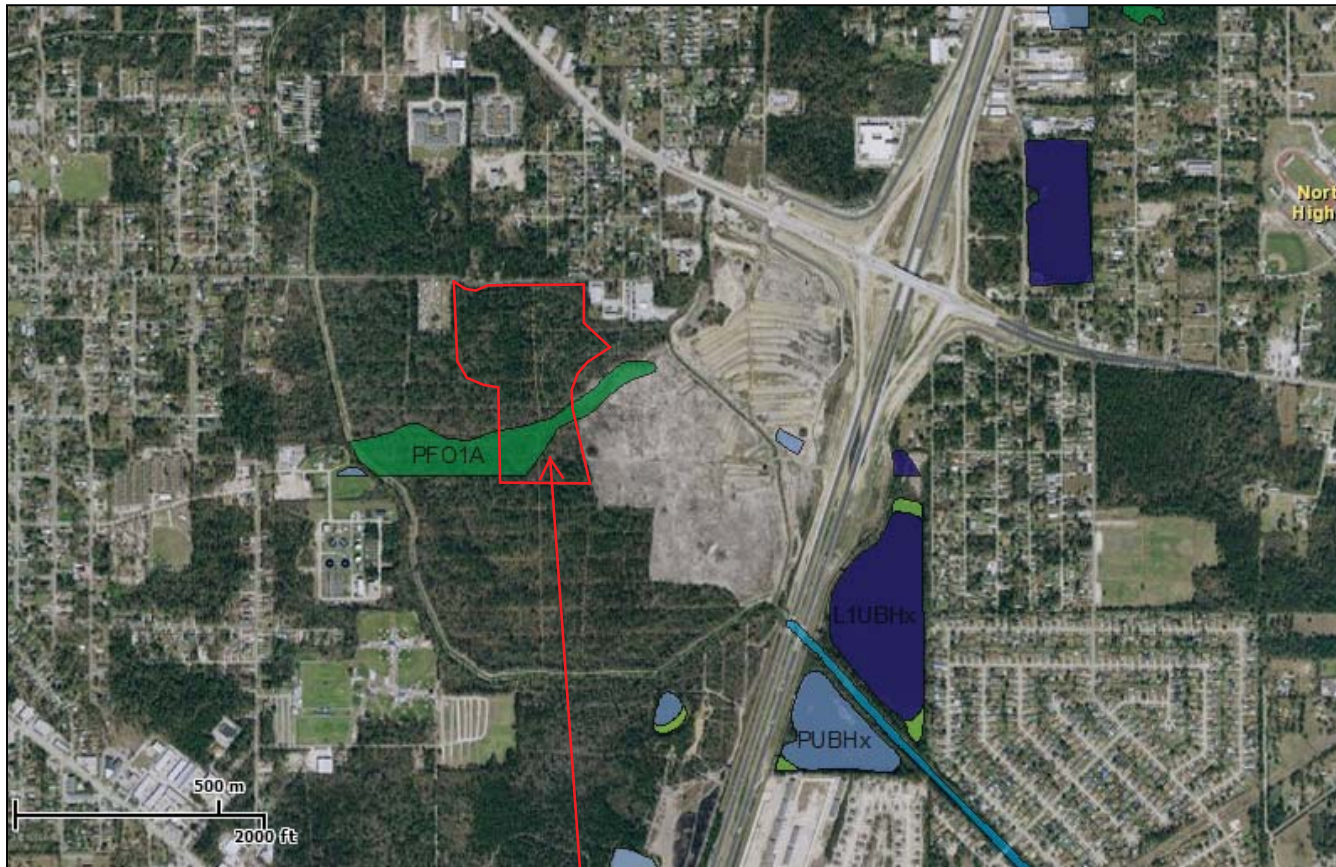


Exhibit 10 - National Wetlands Inventory Map



U.S. Fish and Wildlife Service National Wetlands Inventory

Oct 31, 2011



Wetlands

- Freshwater Emergent
- Freshwater Forested/Shrub
- Estuarine and Marine Deepwater
- Estuarine and Marine
- Freshwater Pond
- Lake
- Riverine
- Other

User Remarks:

35.11 Acre
Technology and
Business Park

This map is for general reference only. The US Fish and Wildlife Service is not responsible for the accuracy or currentness of the base data shown on this map. All wetlands related data should be used in accordance with the layer metadata found on the Wetlands Mapper web site.