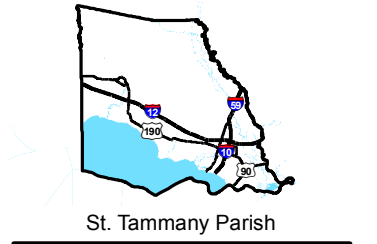


Exhibit Q. The Lakes at Madison Park Site Roadway Transportation Infrastructure Wide Map

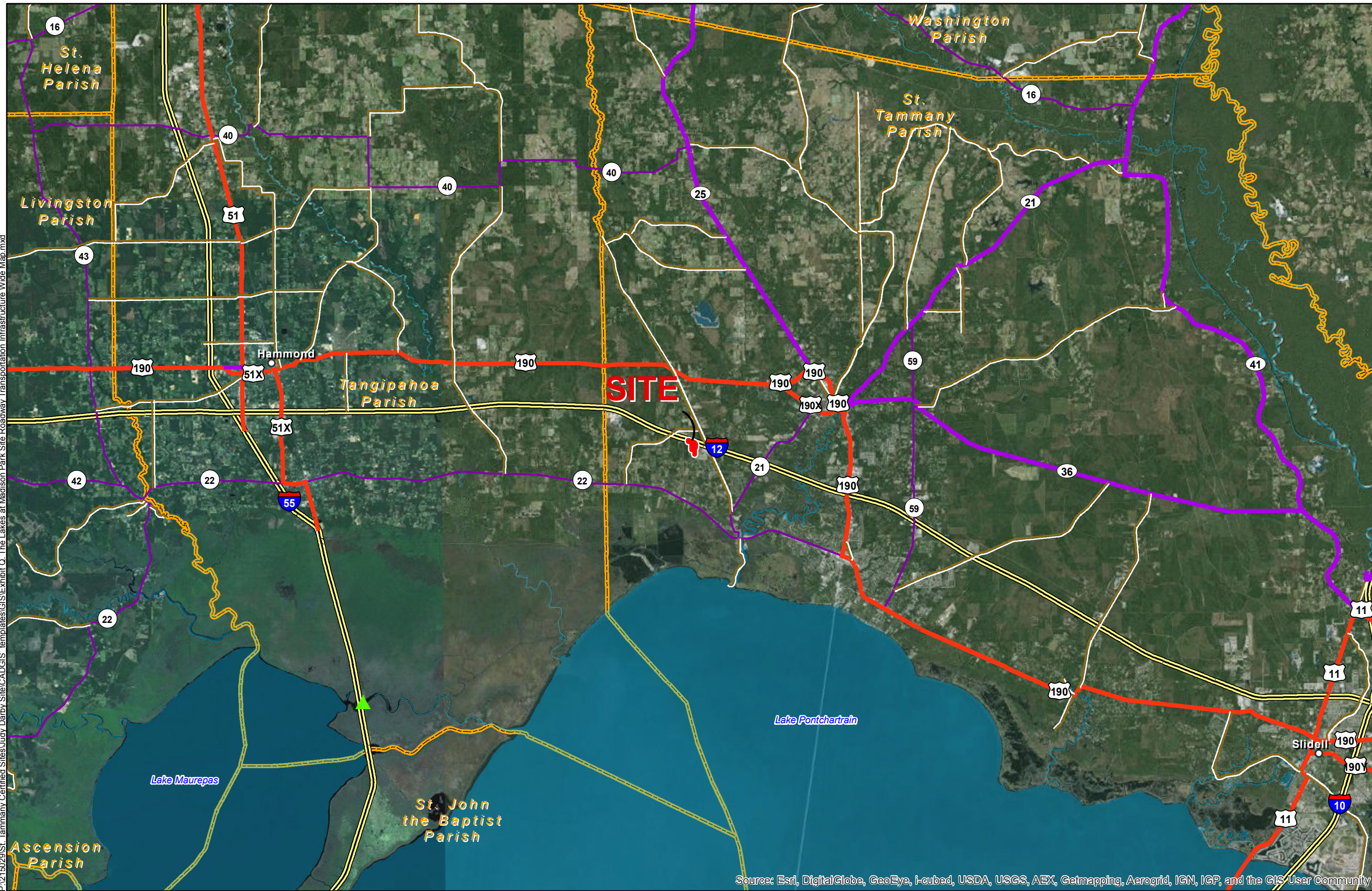
Area Transportation Infrastructure
The Lakes at Madison Park Site
St. Tammany Parish, LA

Darby Holdings, LLC



LEGEND

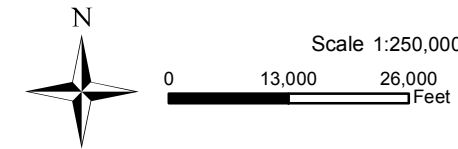
- Site Boundary (33,548 Acres +/-)
- ▲ Shallow Draft Port
- Existing Roadway**
 - ▬ Interstate
 - ▬ US Highway
 - ▬ 4-Lane State Highway
 - ▬ Urban State Highway
 - ▬ Rural State Highway
- Waterbody
- ▬ Parish Boundary



P:\215029\St. Tammany Certified Sites\Lucy Darby Site\CAD\GIS templates\GIS\Exhibit Q. The Lakes at Madison Park Site Roadway Transportation Infrastructure Wide Map.mxd

Source: Esri, DigitalGlobe, GeoEye, i-cubed, USDA, USGS, AEX, Getmapping, Aerogrid, IGN, IGP, and the GIS User Community

General Notes:
 1. No attempt has been made by CSRS, Inc. to verify site boundary, title, actual legal ownership, deed restrictions, servitudes, easements, or other burdens on the property, other than that furnished by the client or his representative.
 2. Transportation data from 2013 TIGER datasets via U.S. Census Bureau at [ftp://ftp2.census.gov/geo/tiger/TIGER2013](http://ftp2.census.gov/geo/tiger/TIGER2013).
 3. 2013 aerial imagery from USDA-APFO National Agricultural Inventory Project (NAIP) and may not reflect current ground conditions.



St. Tammany EDF
 ECONOMIC DEVELOPMENT FOUNDATION

Date: 6/17/2015
 Project Number: 215029
 Drawn By: AMB
 Checked By: JAY

CSRS
 IMAGINE SHAPE DELIVER

6767 Perkins Road Suite 200 Baton Rouge, LA 70809
 Telephone: 225 769-0546 Fax: 225 767-0060
www.csronline.com