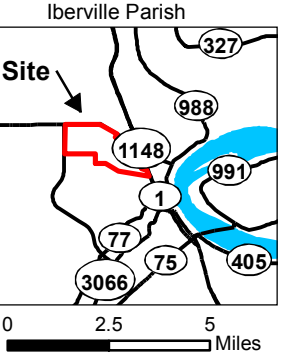
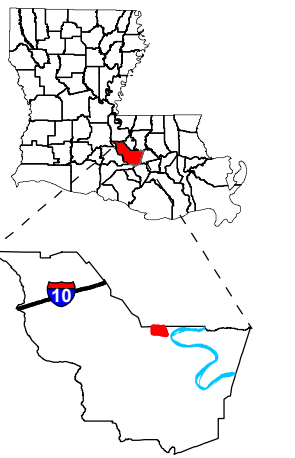


# Exhibit M. Dow Louisiana Operations West Local Product Pipeline Crossings Maps

Project:  
**Site Exhibit for Dow Site Iberville Parish, LA**

Client:  
**BRAC**



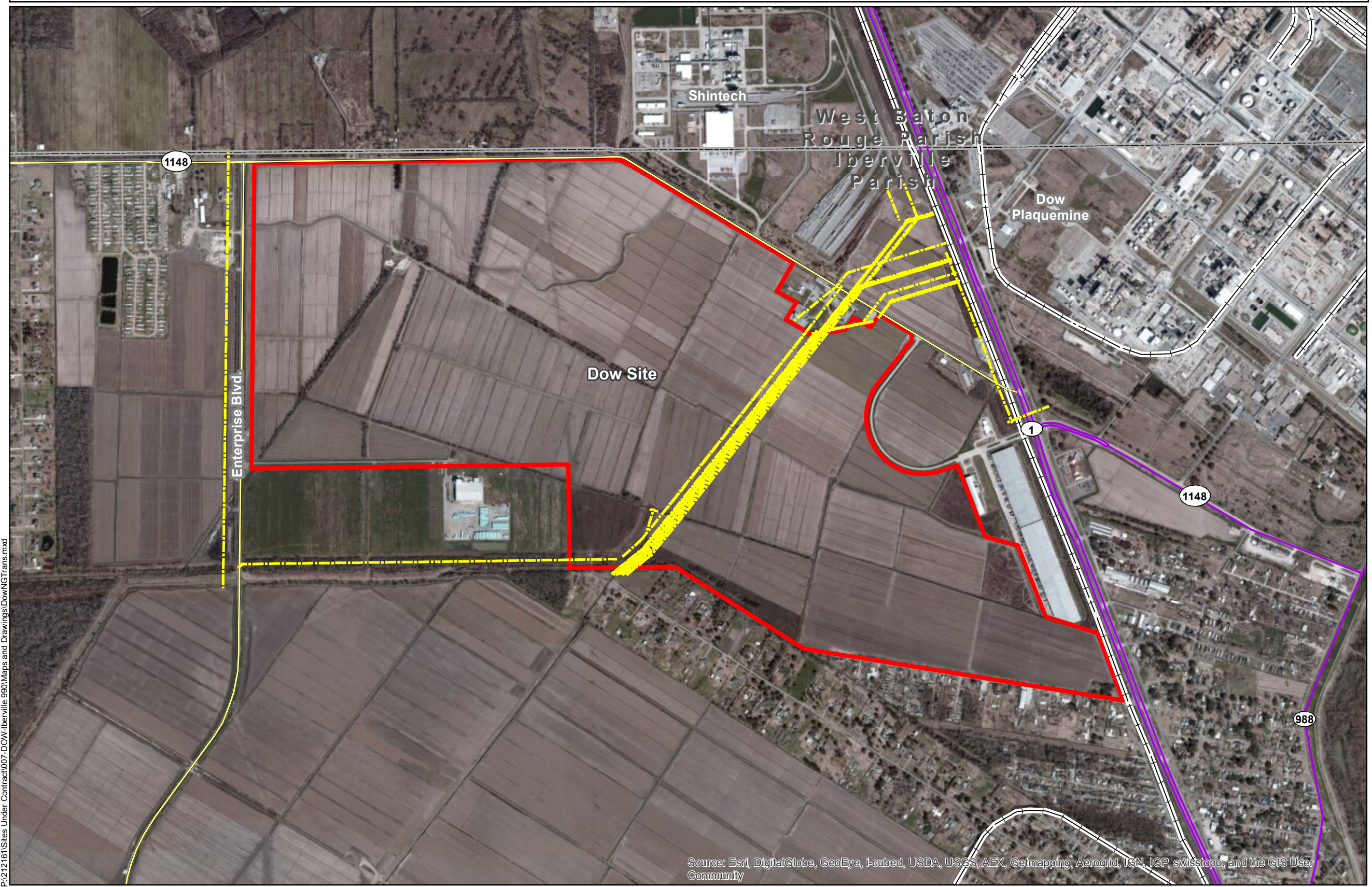
**Legend:**

- Natural Gas Transmission Line
- LA Highway
- Local Roads
- Railroad
- Dow Site
- Parish Boundary



Source: GIS features acquired from public domain state and federal data sources (LDOTD, GNIS, LOSCO, US Census Bureau).

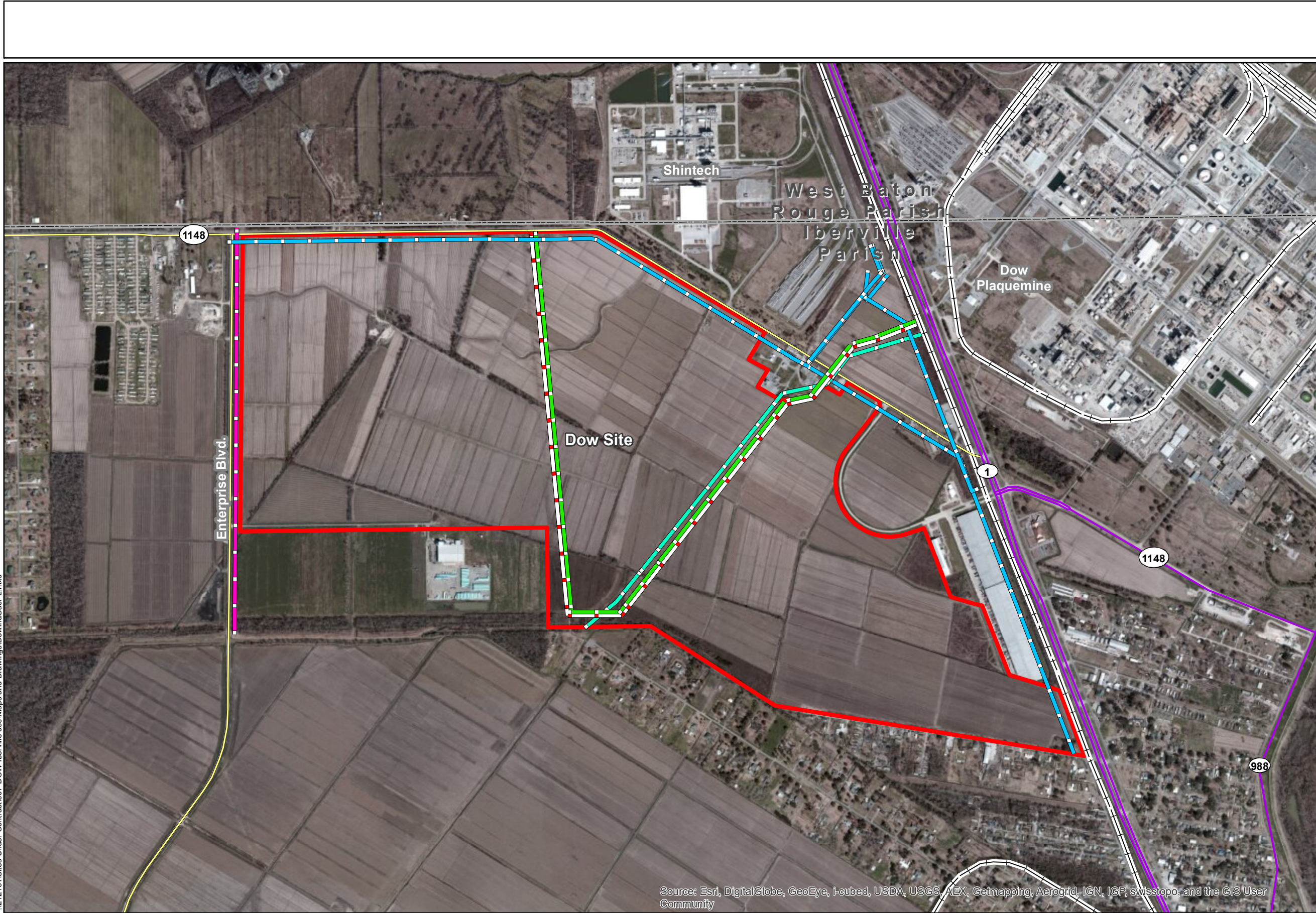
Date:	11/4/2013
Project Number:	212161.20.007
Drawn By:	JES
Checked By:	TMG



P:\212161\Sites Under Contract\007-DOW-Iberville 990\Maps and Drawings\DownNGTrans.mxd

- General Notes:**
1. Pipeline information obtained from the National Pipeline Mapping System (<https://www.npms.phmsa.dot.gov/>), Louisiana One Call and the individual pipeline operators.
  2. Exact field location has not been determined. The lines shown are an approximate representation only.
  3. Product types in individual lines can vary the products represented here were current as of the publication of this exhibit, but may change depending on the demands and requirements of their systems.



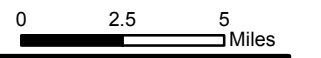
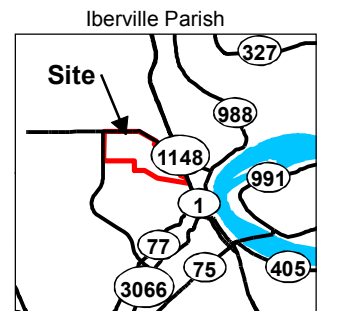
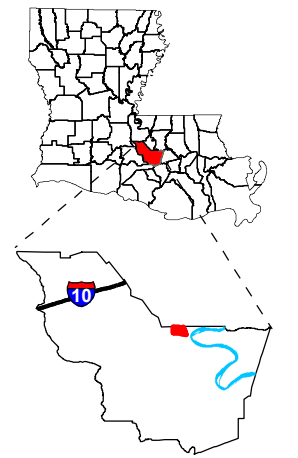


P:\212161\Sites Under Contract\007-DOW-Iberville 990\Maps and Drawings\DownGasPL.mxd

Source: Esri, DigitalGlobe, GeoEye, i-cubed, USDA, USGS, AEX, Getmapping, Aerogrid, IGN, IGP, swisstopo, and the GIS User Community

Project:  
**Site Exhibit for  
 Dow Site  
 Iberville Parish, LA**

Client:  
**BRAC**



- Legend:**
- Nustar Ammonia
  - Denbury CO2
  - Air Products Hydrogen
  - Air Liquide Nitrogen
  - Air Liquide Oxygen
  - LA Highway
  - Local Roads
  - Railroad
  - Dow Site
  - Parish Boundary

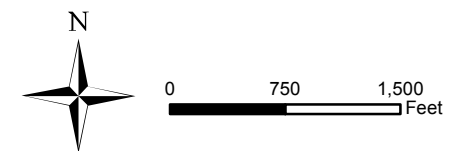


Source:  
 GIS features acquired from public domain state and federal data sources (LDOTD, GNIS, LOSCO, US Census Bureau).

Date: 11/8/2013  
 Project Number: 212161.20.007  
 Drawn By: JES  
 Checked By: TMG

**General Notes:**

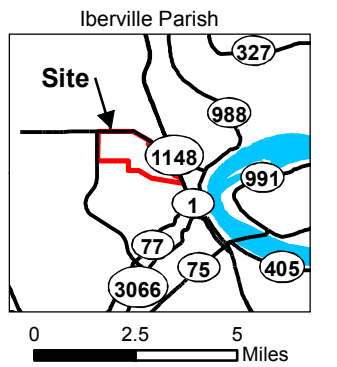
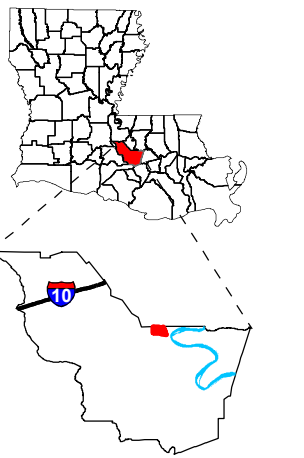
1. Pipeline information obtained from the National Pipeline Mapping System website (<http://www.npms.phmsa.dot.gov>), Louisiana One Call and the individual pipeline operators
2. Exact field location has not been determined. The lines shown are an approximate representation only.
3. Product types in individual lines can vary the products represented here were current as of the publication of this exhibit, but may change depending on the demands and requirements of their systems.



**CSRS**  
 IMAGINE SHAPE DELIVER  
 6767 Perkins Road Suite 200 Baton Rouge, LA 70808  
 Telephone: 225 769-0546 Fax: 225 767-0060  
[www.csrsonline.com](http://www.csrsonline.com)

Project:  
**Site Exhibit for  
Dow Site  
Iberville Parish, LA**

Client:  
**BRAC**

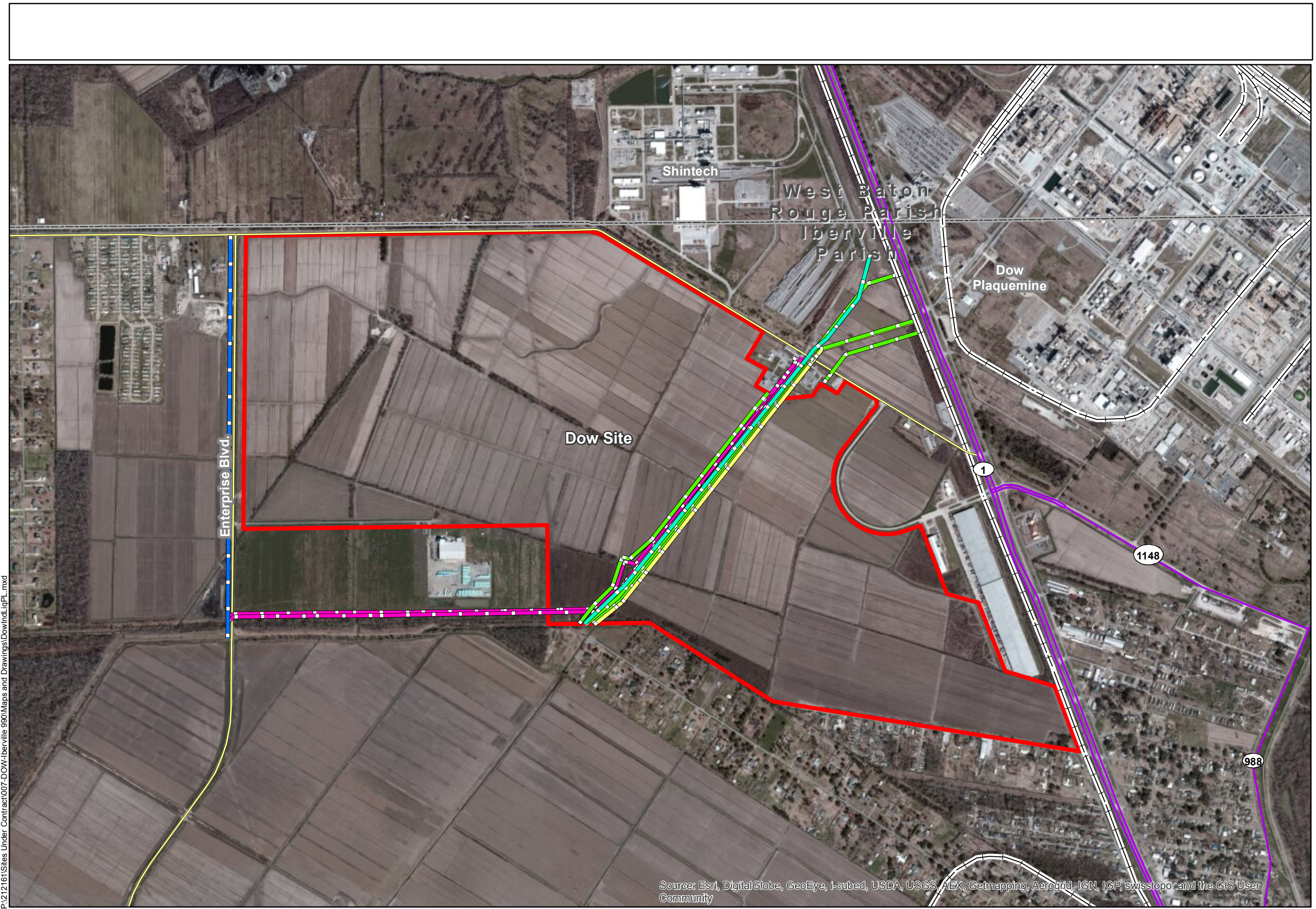


- Legend:**
- Pipeline Technology Benzene
  - Dow & Boardwalk Brine
  - Dow & Exxon Ethylene
  - Dow & Pipeline Technology Propylene
  - Boardwalk Vinyl Chloride Monomer
  - LA Highway
  - Local Roads
  - Railroad
  - Dow Site
  - Parish Boundary



Source:  
GIS features acquired from public domain state and federal data sources (LDOTD, GNIS, LOSCO, US Census Bureau).

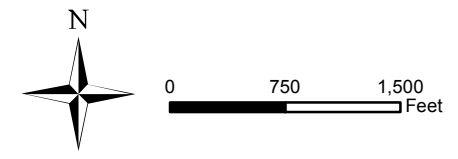
Date:	11/4/2013
Project Number:	212161.20.007
Drawn By:	JES
Checked By:	TMG



P:\212161\Sites Under Contract\007-DOW-Iberville 990\Maps and Drawings\DownInd.lqPL.mxd

**General Notes:**

1. Pipeline information obtained from the National Pipeline Mapping System website (<http://www.npms.phmsa.dot.gov>), Louisiana One Call and the individual pipeline operators
2. Exact field location has not been determined. The lines shown are an approximate representation only.
3. Product types in individual lines can vary the products represented here were current as of the publication of this exhibit, but may change depending on the demands and requirements of their systems.



Source: Esri, DigitalGlobe, GeoEye, I-cubed, USDA, USGS, AEX, Getmapping, Aerogrid, IGN, IGP, swisstopo, and the GIS User Community



**BRAC**  
**Dow LAO-West Site**  
**Pipeline Cross-Section**  
**Iberville Parish, LA**

**GENERAL NOTES:**

1. PIPELINES DIMENSIONS AND PRODUCT INFORMATION OBTAINED FROM THE NATIONAL PIPELINE MANAGEMENT SERVICE ([HTTPS://WWW.NPMS.PHMSA.DOT.GOV/](https://www.npms.phmsa.dot.gov/)) AND LOUISIANA ONE CALL ([HTTP://WWW.LAONECALL.COM/](http://www.laonecall.com/))
2. PIPELINE LOCATIONS ARE APPROXIMATE, EXACT FIELD LOCATIONS HAVE NOT BEEN DETERMINED. THE CENTERLINE LOCATIONS ARE APPROXIMATE AND FOR REPRESENTATION PURPOSES ONLY.
3. PIPELINE OPERATING PRESSURES ARE APPROXIMATE AND CAN VARY DEPENDING ON SYSTEM DEMANDS AND CONDITIONS
4. DOW PIPELINE PRODUCT TYPES CAN VARY DEPENDING ON SYSTEM REQUIREMENTS AND DEMANDS FROM COMMODITY CUSTOMER. PRODUCTS REPRESENTED HERE WERE CURRENT AT THE TIME OF THE PRODUCTION OF THIS DRAWING

Revisions:

#	Date	Description

Key Plan:



Sheet Title:

**Dow LAO-West Site**  
**Pipeline Commodities**

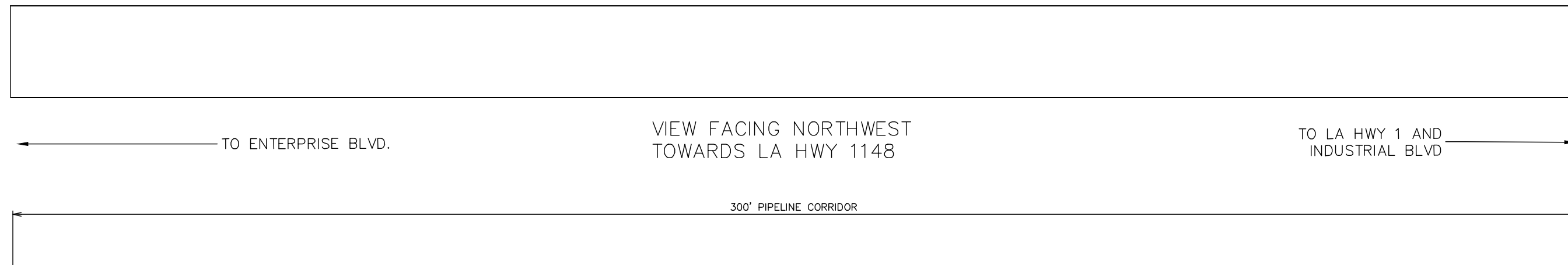
Date: Aug 29, 2013

Project Number: 212161

Drawn By: JES

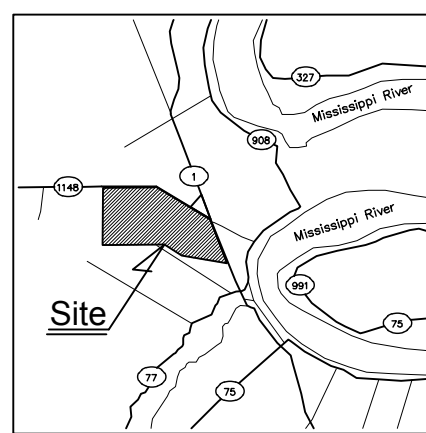
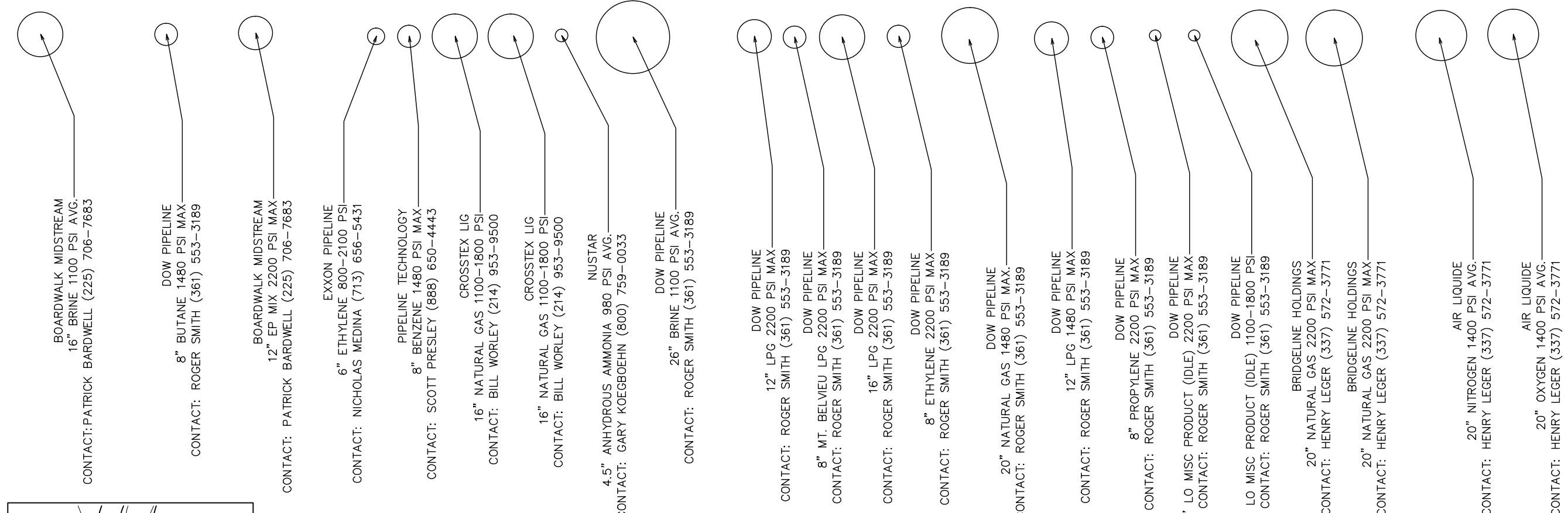
Checked By: TMG

Sheet:



300' PIPELINE CORRIDOR

LEVEL GROUND



CROSS SECTION F1, VIEW FACING NORTHWEST

DRAWING NOT TO SCALE, FOR REPRESENTATIONAL PURPOSES ONLY

COMMODITY	DIMENSION	OPERATING PRESSURE	OPERATOR NAME	POINT OF CONTACT TITLE	CONTACT ADDRESS	PHONE / FAX / EMAIL
NITROGEN	18"	1400 psi avg.	AIR LIQUIDE AMERICA	L J Morvant Location Coordinator		Phone: (225) 718-7380 Fax: Email: None
OXYGEN	18"	1400 psi avg.				
HYDROGEN	18"	1400 psi avg.	AIR PRODUCTS	Leticia Prevost Pipeline Compliance Manager	10202 Strang Road La Porte TX 77571	Phone: (281) 478-7579 Fax: Email: prevoislb@airproducts.com
	18"	1400 psi avg.				
BRINE	16"	1100 psi avg.	BOARDWALK LOUISIANA MIDSTREAM	Patrick Bardwell Integrity Supervisor	4460 Bluebonnet Blvd, Suite B Baton Rouge LA 70809	Phone: (225) 706-7683 Fax: (225) 706-7050 Email: pbardwell@petrologistics.com
EP MIX	12"	2200 psi max	BOARDWALK LOUISIANA MIDSTREAM			
ETHYLENE	6"	1480 psi max	BOARDWALK LOUISIANA MIDSTREAM (PL OLEFINS)			
NATURAL GAS	8"	1480 psi max	BRIDGELINE HOLDINGS (CHEVRON PIPELINE)	Henry Leger Pipeline Safety Specialist	200 Galbert Rd Lafayette LA 70506	Phone: (337) 572-3771 Fax: Email: henryleger@chevron.com
	20"	2200 psi max				
	26"	2200 psi max				
POTABLE WATER	14"		CITY OF PLAQUEMINE	Frank Mott Director of Utilities	58190 W. W. Harleaux St. Plaquemine, LA 70764	Phone: (225) 687-2461 Fax: (225)-687-1037 Email:
NATURAL GAS	16"	1100-1800 psi	CROSSTEX LIG LLC	Bill Worley DOT Pipeline Compliance Manager	2501 Cedar Springs Rd, Suite 100 Dallas TX 75201	Phone: (214) 953-9500 Fax: Email: Bill.Worley@CrosstexEnergy.com
	16"	1100-1800 psi				
CARBON DIOXIDE	24"	1500-2200 psi	DENBURY ONSHORE LLC	Ernesto Alegria Manager of Investor and Corporate Relations	5320 Legacy Dr. Plano TX 75024	Phone: (972) 673-2000 Fax: Email: Ernesto.alegria@denbury.com
LO MISCL	4"	2200 psi max	DOW CHEMICAL (MULTIPLE P/L)	Roger Smith Public Awareness/Security Specialist	PO Box 186 Seadrift TX 77994	Phone: (361) 553-3189 Fax: (361) 553-3122 Email: smithrp@dow.com
NATURAL GAS	8"	1480 psi max	DOW HYDROCARBONS & RESOURCES			
NATURAL GAS	20"	1480 psi max	DOW INTRASTATE GAS CO			
BRINE	26"	1100 psi avg.	DOW PIPELINE			
BUTANE	8"	1480 psi max				
ETHYLENE	8"	2200 psi max				
LIQUID PETROLEUM GAS	12"	2200 psi max				
	12"	2200 psi max				
	16"	2200 psi max				
NATURAL GAS	20"	N/A				
PROPYLENE	8"	2200 psi max				
MULTIPLE HVL'S	8"	2200 psi max	DOW PIPELINE (MT BELVIEU)			
LO MISCL	4"	2200 psi max	DOW/UNION CARBIDE			
ETHYLENE	6"	800-2100 psi	EXXONMOBIL PIPELINE			
NATURAL GAS	2"	50 psi	IBERVILLE PARISH UTILITY DEPT.	Brian Berthelot Director	59805 Bayou Rd. Plaquemine, LA 70765	Phone: (225) 687-5152 Fax: (225) 687-9696 Email: bberthelot@iberparish.com
WATER	12"					
ANHYDROUS AMMONIA	4.5"	980 psi	NUSTAR PIPELINE OPERATING PART	Gary Koegeboehn VP GM Operations	7340 West 21st N, Ste. 200 Wichita KS 67205	Phone: (800) 759-0033 Fax: Email: Gary.Koegeboehn@nustarenergy.com
BENZINE	8"	1480 psi max	PIPELINE TECHNOLOGY LLC	Scott Presley	1048 Florida Blvd. Baton Rouge LA 70802	Phone: (888) 650-4443 Fax: (225) 336-1849 Email: scott.presley@pipelinetechnology.biz
NATURAL GAS	36"	1100-1800 psi	TEXAS EASTERN TRANS (SPECTRUM ENERGY)	Dwayne Teschendorf Principal Engineer	5400 Westheimer Ct, Houston TX 77056	Phone: (713) 627-5573 Fax: Email: none