



# LA Highway 1/Leonard Road Site

10100 LA Highway 1 South  
Shreveport, LA 71115

## SITE INFORMATION

**ACRES AVAILABLE:**

554 Acres

**PROPERTY TYPE:**

Industrial with Rail Access

**TERRAIN:**

Flat

**SUB DIVIDABLE:**

TBD

**PRIOR/CURRENT USE:**

Agricultural

**OWNER:**

Franks Investment Company, LLC

**NEAREST MSA:**

Shreveport/Bossier  
Population: 447,193  
Distance: 0 miles

Alexandria

Population: 154,441  
Distance: 54 miles

**COORDINATES:**

32.382053, -93.677481

## UTILITIES

**ELECTRICITY:**

AEP-SWEPCO

**NATURAL GAS:**

Centerpoint Energy

**WATER:**

City of Shreveport

**SEWER:**

City of Shreveport

**TELECOM:**

AT&T

**FIBER OPTIC:**

AT&T



## TRANSPORTATION LOGISTICS

**INTERSTATE:**

I-49  
Distance: 5 miles

**HIGHWAY:**

LA-1  
Distance: Adjacent to Site

**RAIL:**

Union Pacific Railroad  
Distance: Adjacent to Site

**AIRPORT:**

Shreveport Regional Airport (SHV)  
Distance: 14 miles

**PORT:**

The Port of Caddo-Bossier  
Distance: 2 miles



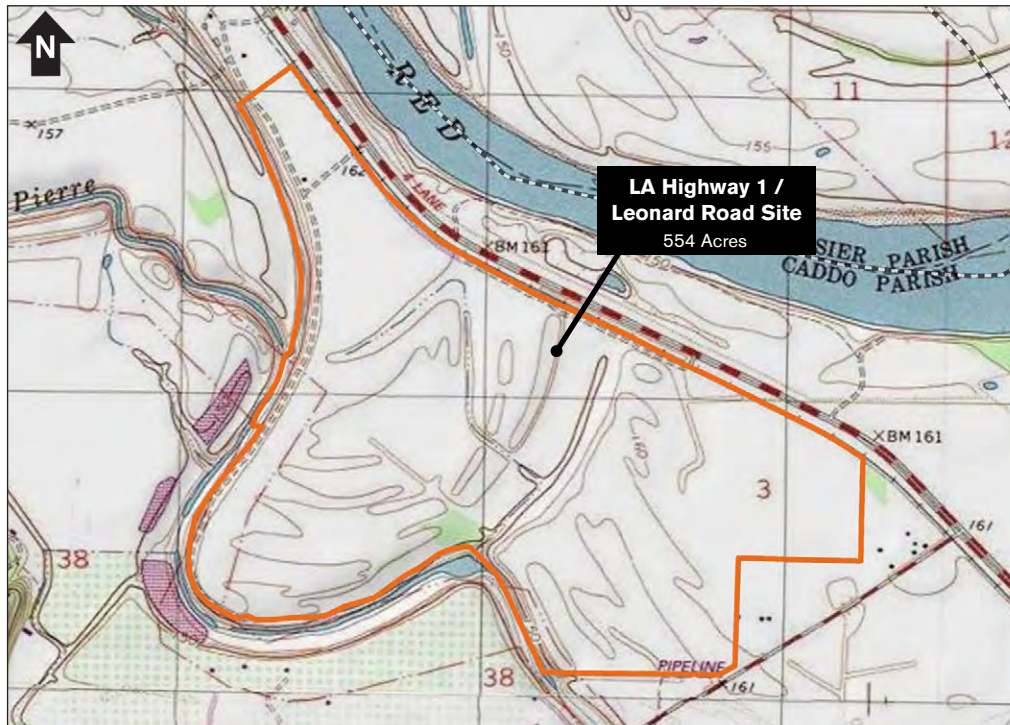
Site Located in  
Caddo Parish

**FIND OUT MORE:** [OpportunityLouisiana.com](http://OpportunityLouisiana.com)  
800.450.8115



# LA Highway 1/Leonard Road Site

10100 LA Highway 1 South  
Shreveport, LA 71115



FIND OUT MORE: [OpportunityLouisiana.com](http://OpportunityLouisiana.com)  
800.450.8115