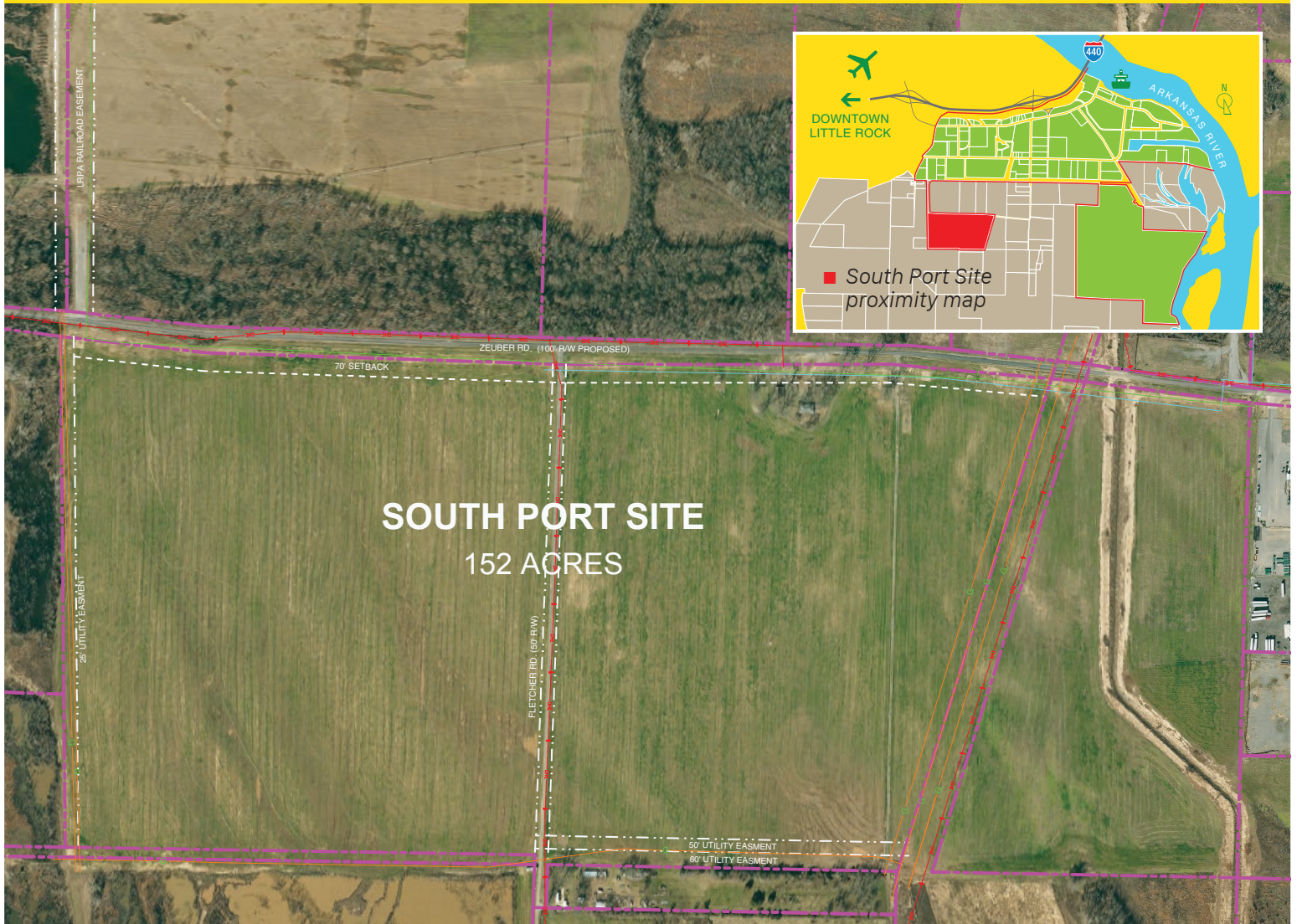
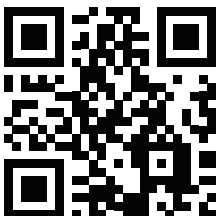


# South Port Site Close to Interstates 152 Acres



- 152 Acres
- Zoned: I-3 Industrial
- Utilities on site: water, gas, electric, sewer
- Property may be subdivided
- Close proximity to Interstates 40, 30 and 440
- Green Field Site

Google Port Map



The Little Rock Port Authority Industrial Park is a diverse business community representing more than 40 businesses. It has everything that a manufacturer needs to succeed. At the core of its activity is the Little Rock Port Terminal, the prime location for existing business and future expansion of businesses.



Little Rock Port Authority  
**Centered on  
global trade.**



Contact:  
**Bryan Day**  
(501) 490-1468  
[bday@lrportauthority.com](mailto:bday@lrportauthority.com)  
10600 Industrial Harbor Drive  
Little Rock, AR 72206  
[LRportauthority.com](http://LRportauthority.com)