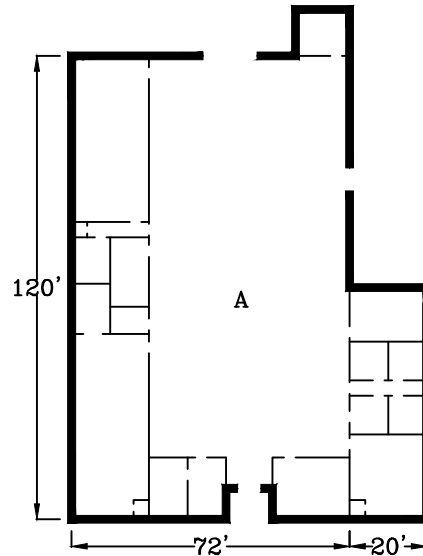
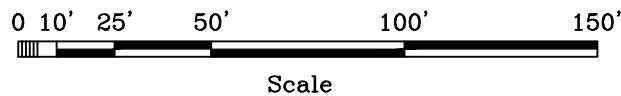


A 15'7" under beam
 B 10'7" under beam
 C 12'1" between beams
 D 12'9" between beams



For further information contact:
 Arkansas Economic Development Commission
 (501)-682-7311



Note: This drawing was prepared by the Arkansas Economic Development Commission from information deemed reliable. Verification is recommended prior to lease or purchase.