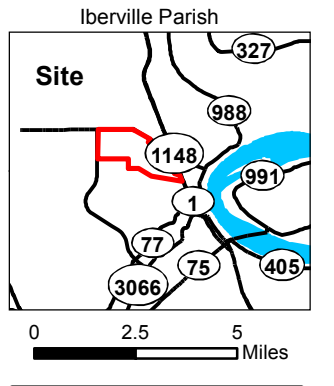
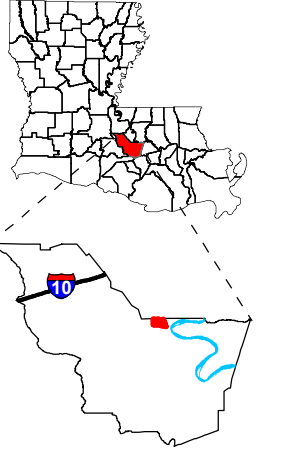


Exhibit L. Dow Louisiana Operations West Natural Gas Infrastructure Map

Project:
**Site Exhibit for
 Iberville Site
 Iberville Parish, LA**

Client:
BRAC

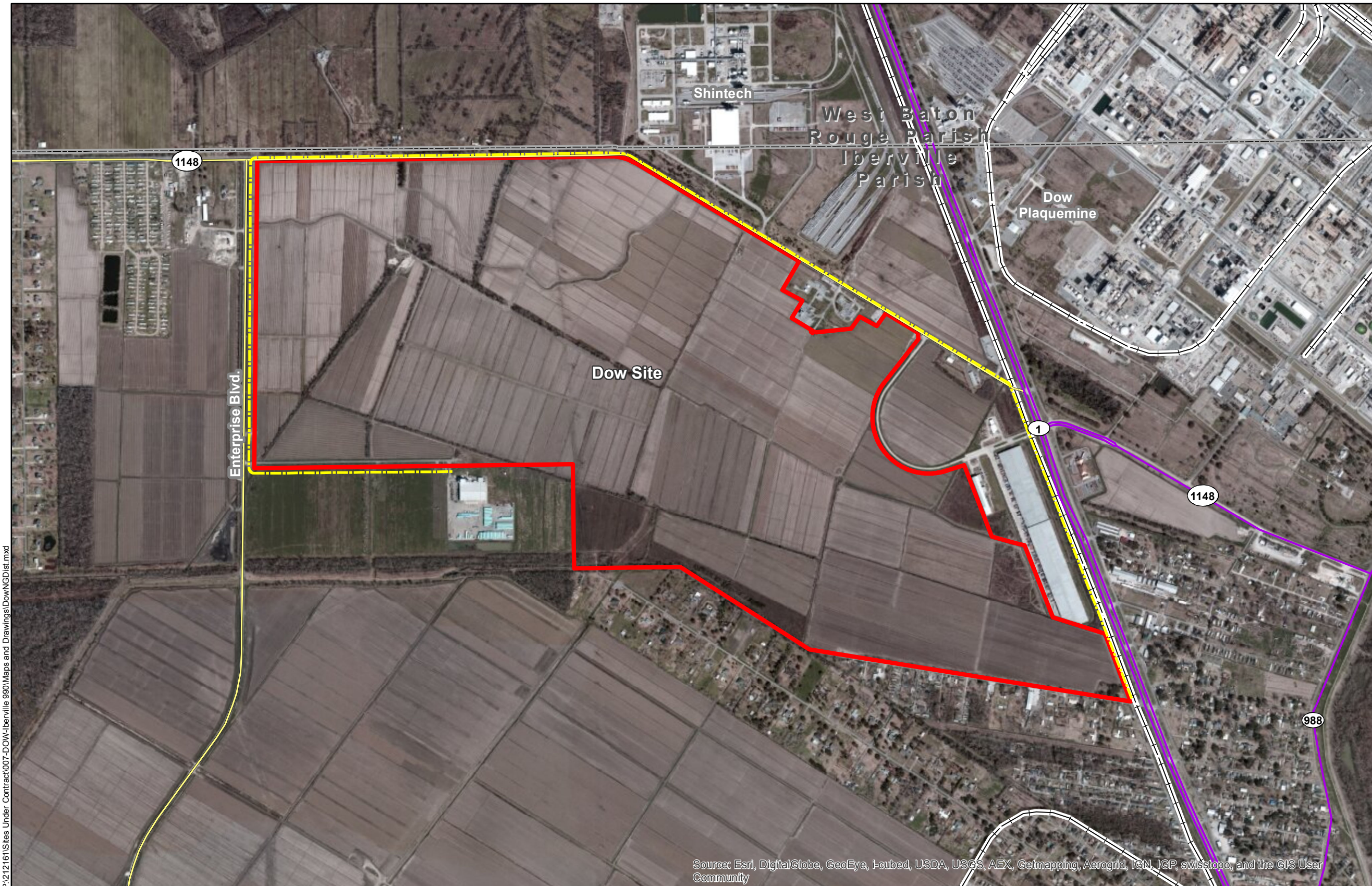


- Legend:**
- 2" Natural Gas Distribution Line
 - LA Highway
 - Local Roads
 - Railroad
 - Dow Site
 - Parish Boundary



Source:
 GIS features acquired from public domain state and federal data sources (LDOTD, GNIS, LOSCO, US Census Bureau).

Date: 11/4/2013
 Project Number: 212161.20.007
 Drawn By: JES
 Checked By: TMG



P:\212161\Sites Under Contract\007-DOW-Iberville 990\Maps and Drawings\DownNGDist.mxd

Source: Esri, DigitalGlobe, GeoEye, i-cubed, USDA, USGS, AEX, Getmapping, Aerogrid, IGN, IGP, swisstopo, and the GIS User Community

General Notes:

1. Pipeline information obtained from Louisiana One Call and the Iberville Parish Utility Department.
2. Exact field location has not been determined. The lines shown are an approximate representation only.
3. Product types in individual lines can vary the products represented here were current as of the publication of this exhibit, but may change depending on the demands and requirements of their systems.

