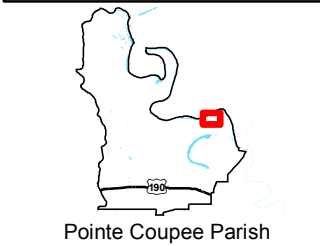


Exhibit N. Angel Ranch Site Telecommunications Infrastructure Map

Telecommunications Infrastructure
Angel Ranch Site
Pointe Coupee Parish, LA

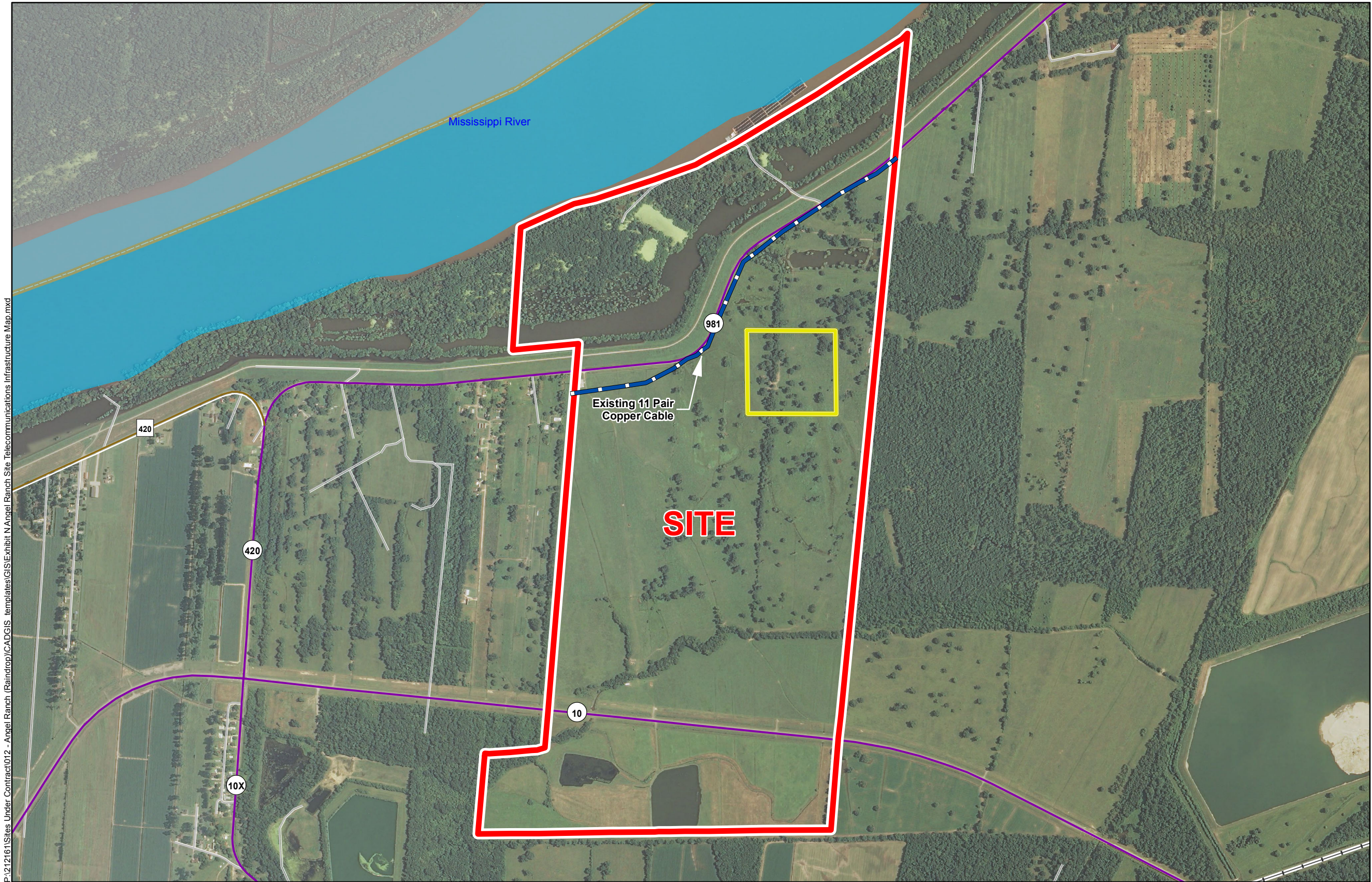
BRAC



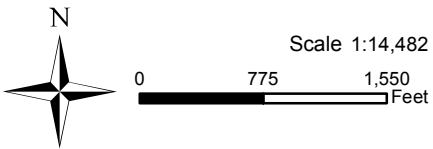
LEGEND


- Site Boundary (731.56 Acres +/-)
- Sample 25-Acre Site Pad
- Existing Telecommunications
- Existing Roadway
 - Urban State Highway
 - Rural State Highway
 - Local Roads
 - Railroad
- Waterbody
- Parish Boundary

P:\212161\Sites Under Contract\012 - Angel Ranch (Raindrop)\CAD\GIS templates\GIS\Exhibit N\Angel Ranch Site Telecommunications Infrastructure Map.mxd



- General Notes:
1. No attempt has been made by CSRS, Inc. to verify site boundary, title, actual legal ownership, deed restrictions, servitudes, easements, or other burdens on the property, other than that furnished by the client or his representative.
 2. Transportation data from 2013 TIGER datasets via U.S. Census Bureau at ftp2.census.gov/geo/tiger/TIGER2013.
 3. Utility information from visual inspection and/or the individual utility operators. Exact field location has not been determined by survey. The lines shown are an approximate representation only and may have been offset for depiction purposes.
 4. 2013 aerial imagery from USDA-APFO National Agricultural Inventory Project (NAIP) and may not reflect current ground conditions.



 Baton Rouge Area Chamber.

Date:	10/28/2014
Project Number:	212161.20.012
Drawn By:	MAT
Checked By:	TMG


IMAGINE SHAPE DELIVER
6767 Perkins Road Suite 200 Baton Rouge, LA 70808
Telephone: 225 769-0546 Fax: 225 767-0060
www.csrsonline.com