

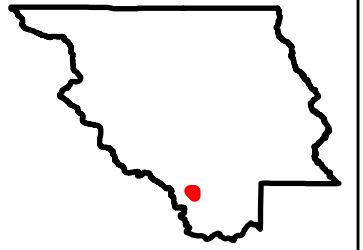
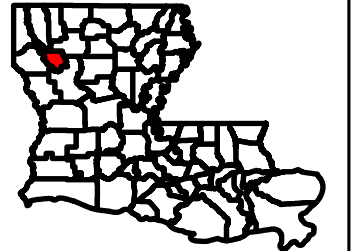
Exhibit X: Red River Parish Port Site Soils Conservation Service Map



Red River Parish Port Site Soils Conservation Service Map

Site Exhibit For
Red River Parish Port Site
Red River Parish

NLEP



Legend

Site Boundary
(±69.23 ac.)

Stream

Soil Type

Bx - Buxin clay

Cs - Coushatta
silt loam

Ct - Coushatta
silty clay loam

La - Latanier clay

MoA - Moreland
clay

Sr - Severn very
fine sandy loam

W - Water

Major Road

Interstate

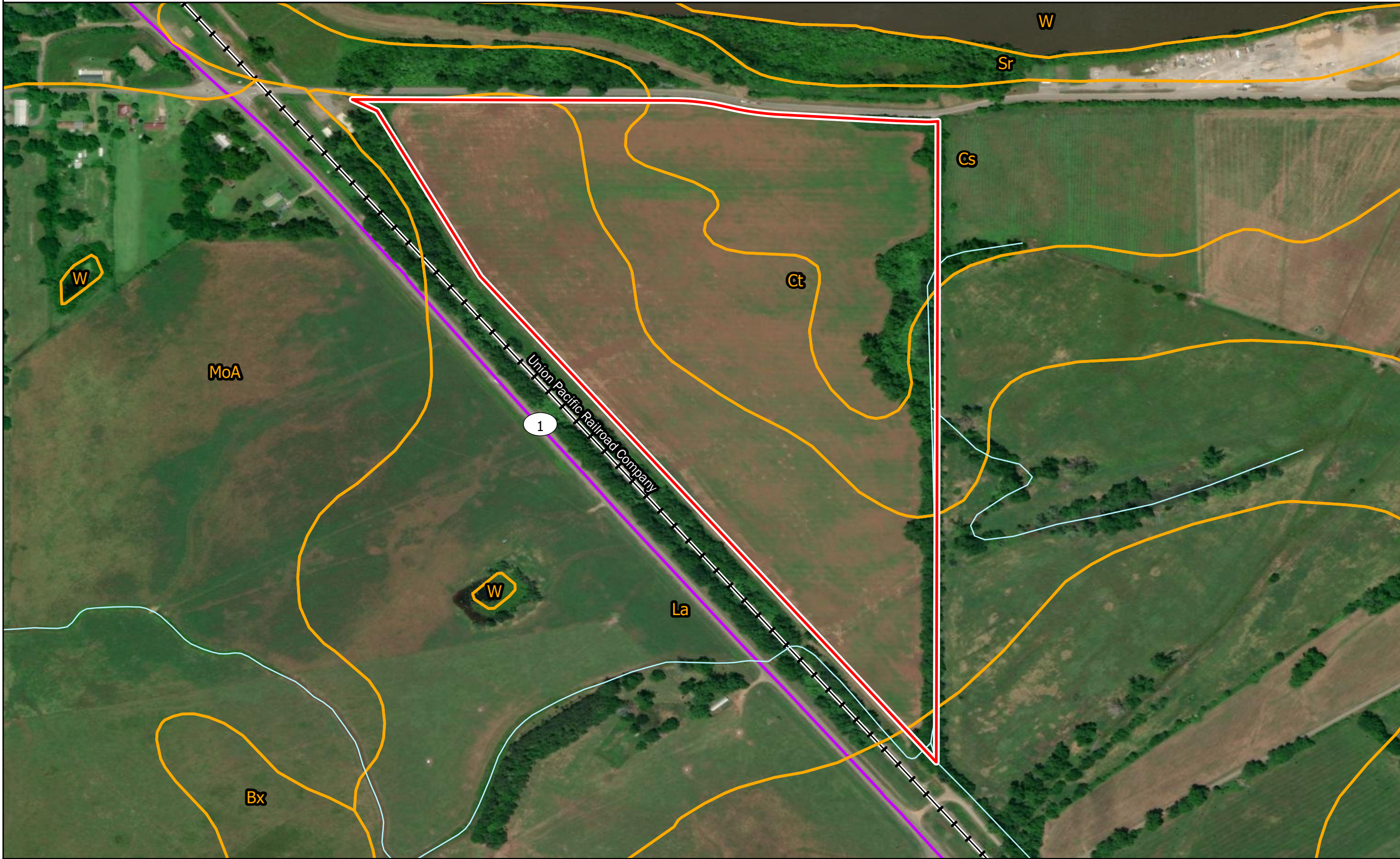
US Highway

State Highway

Railroad



Date: 6/21/2024
Project Number: 216269
Drawn By: BMS
Checked By: EEB



General Notes:
1. The information presented herein is for planning purposes only. Further detailed due diligence MUST be completed prior to making decisions regarding the site.
2. No attempt has been made by CSRS, Inc. to verify site boundary, title, actual legal ownership, deed restrictions, servitudes, easements, or other burdens on the property, other than that furnished by the client or his representative.
3. Transportation data from 2023 TIGER datasets via U.S. Census Bureau at <https://www.census.gov/geographies/mapping-files/time-series/geo/tiger-line-file.html>.
4. Aerial imagery is compiled from multiple different sources to create one cohesive image and may not reflect current ground conditions.
5. Soils data is from the USDA-NRCS Web Soil Survey website: <https://websoilsurvey.nrcs.usda.gov/app/>.



P:\216269\017 - Red River Parish Port\CAD\GIS_templates\GIS\Red River Soil