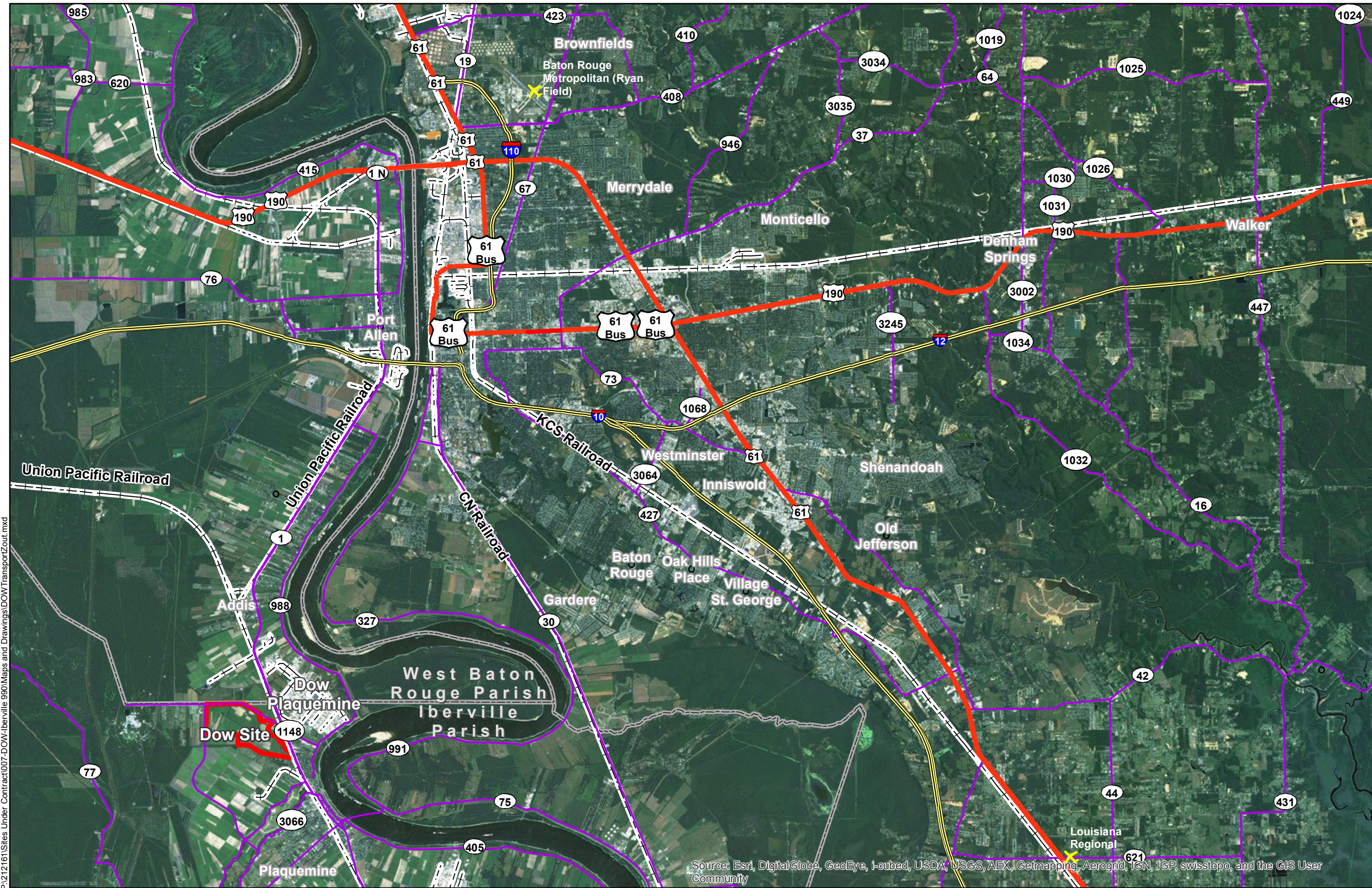
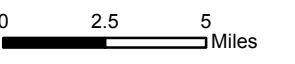
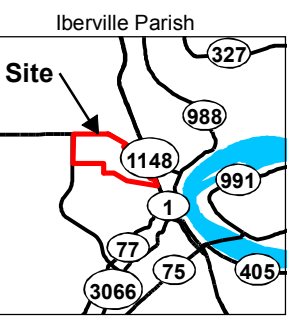
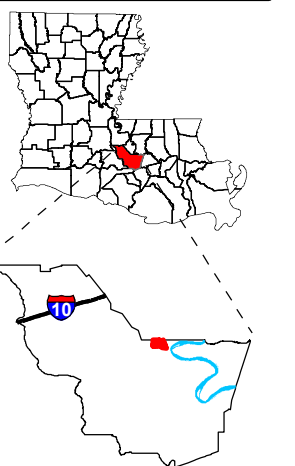


Exhibit P. Dow Louisiana Operations West Roadway Transportation Infrastructure Wide Map



Project: **Site Exhibit for Dow Site Iberville Parish, LA**

Client: **BRAC**



- Legend:**
- Interstate
 - US Highway
 - LA Highway
 - Railroad
 - Dow Site
 - Parish Boundary

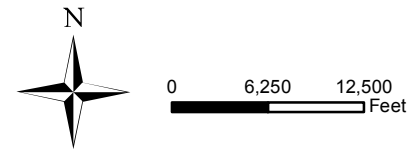
Baton Rouge Area Chamber.

Source: GIS features acquired from public domain state and federal data sources (LDOTD, GNIS, LOSCO, US Census Bureau).

Date:	11/4/2013
Project Number:	212161.20.007
Drawn By:	JES
Checked By:	TMG

P:\212161\Sites Under Contract\007-DOW-Iberville 990\Maps and Drawings\DOWTransportZout.mxd

- General Notes:**
- No attempt has been made by CSRS, Inc. to verify title, actual legal ownership, deed restrictions, servitudes, easements, or other burdens on the property, other than that furnished by the client or his representative.
 - Railroad and Highway data obtained from LDOTD datasets via Atlas: The Louisiana Statewide GIS at <http://atlas.lsu.edu>.
 - Oil and Gas Well product descriptions obtained from Louisiana DNR SONRIS search.



CSRS
 IMAGINE SHAPE DELIVER
 6767 Perkins Road Suite 200 Baton Rouge, LA 70808
 Telephone: 225 769-0546 Fax: 225 767-0060
www.csronline.com