

Exhibit GG. Chemin 3 Site Phase I Cultural Resources Assessment Report



Chemin 3 Site

Phase1 Cultural Resources Assessment Report

**PHASE I CULTURAL RESOURCES SURVEY
OF CHEMIN 3 SITE, 83.5 ACRES (33.79 HECTARES)
IN YOUNGSVILLE, LAFAYETTE PARISH, LOUISIANA**

Draft Report



for

**One Acadiana
523 Jefferson St,
Lafayette, LA 70501**

May 2026



SURA, INC.

P.O. Box 14414

Baton Rouge, LA 70898-4414

Since 1986



**PHASE I CULTURAL RESOURCES SURVEY
OF CHEMIN 3 SITE, 83.5 ACRES (33.79 HECTARES)
IN YOUNGSVILLE, LAFAYETTE PARISH, LOUISIANA**

Draft Report

by

Stephanie Banta, Katt Doucet and Malcolm K. Shuman

**Surveys Unlimited Research Associates, Inc.
P.O. Box 14414
Baton Rouge, Louisiana 70898-4414**

for

**One Acadiana
523 Jefferson St,
Lafayette, LA 70501**

**Louisiana Economic Development (LED)
100 North St,
Baton Rouge, LA 70802**

May 2026

ABSTRACT

From January 19 through February 13, 2026, Surveys Unlimited Research Associates, Inc. (SURA, Inc.) conducted a Phase I cultural resources survey of the Chemin 3 Site, 83.5 acres (ac) (33.79 hectares [ha]) in Youngsville, Lafayette Parish, Louisiana. The Area of Potential Effects (APE) is a part of Township 11 South and Range 5 East. This survey was completed to secure funding from the Department of Louisiana Economic Development (LED) under the Certified Sites Program. A total of 276 shovel tests were excavated, but no positive shovel tests occurred. A total of 25 shovel tests were unable to be excavated. Site 16LY84 was revisited and the eastern boundary was expanded. In addition, the Chemin Scatter Site (16LY165) and an isolated find were discovered. Sixty-two delineation shovel tests were excavated in the cardinal directions within the direct APE. No subsurface deposits were discovered. The indirect APE of 1,000 feet (ft) (304.8 meters [m]) contained modern standing structures and agricultural land. Due to the lack of diagnostic characteristics of the collected artifacts, it is felt that neither site meets the requirements of Criterion D (information potential) of the NRHP. Consequently, it is recommended that the proposed development be allowed to proceed as planned.

ACKNOWLEDGEMENTS

The field crew was led by Stephanie Banta and consisted of Stephanie Banta, Katt Doucet, Patrick Bradley, and Brad Griffen. Stephanie Banta, Katt Doucet and Malcolm Shuman prepared this report and Malcolm Shuman served as the principal investigator.

TABLE OF CONTENTS

ABSTRACT.....	1
ACKNOWLEDGEMENTS.....	2
TABLE OF CONTENTS.....	3
LIST OF FIGURES.....	4
LIST OF TABLES.....	5
CHAPTER ONE: INTRODUCTION.....	6
CHAPTER TWO: LAND USE HISTORY	8
Geology and Geomorphology.....	8
Soils.....	9
Flora and Fauna.....	10
Historic Land Use	11
Topographic Maps	11
Satellite Imagery	17
CHAPTER THREE: PREVIOUS INVESTIGATIONS	22
Projects within 1 mi (1.6 km) of Project Area.....	22
Archaeological Sites within 1 mi (1.6 km) of APE	24
Standing Structures within 1 mi (1.6 km) of APE.....	25
CHAPTER FOUR: METHODOLOGY	27
Procedures	27
Eligibility for the National Register of Historic Places.....	27
Curation Statement.....	28
CHAPTER FIVE: RESULTS OF THE SURVEY	29
Fieldwork.....	29
Site 16LY84: Previously Recorded Historic Surface Scatter Site	31
Site 16LY165: Chemin Scatter Site	36
Isolated Find.....	40
Indirect APE.....	44
Summary of Fieldwork.....	45
CHAPTER SIX: CONCLUSIONS AND RECOMMENDATIONS	46
REFERENCES CITED.....	47
Websites	48
Maps	48

LIST OF FIGURES

Figure 1. Topographic Quadrangle of Youngsville, LA 7.5' map.	6
Figure 2. Map of project area (Source: One Acadiana).....	7
Figure 3. Soil map of Direct APE (University of California, Davis 2016/Google Earth).	9
Figure 4. Portion of 1939 St. Martinsville, LA 15-minute map (Source: USGS).	11
Figure 5. Portion of 1957 St. Martinsville, LA 15-minute map.	12
Figure 6. Portion of 1970 St. Martinsville, LA 15-minute map.	13
Figure 7. Portion of 2015 Youngsville, LA 7.5-minute map.	14
Figure 8. Portion of 2018 Youngsville, LA 7.5-minute map.	15
Figure 9. Portion of 2020 Youngsville, LA 7.5-minute map.	16
Figure 10. Satellite imagery of the Direct APE, February 1998 (Source: Google Earth).	17
Figure 11. Satellite imagery of the Direct APE, November 2006 (Source: Google Earth).....	18
Figure 12. Satellite imagery of the Direct APE, August 2009 (Source: Google Earth).	19
Figure 13. Satellite imagery of the Direct APE, April 2014 (Source: Google Earth).	20
Figure 14. Satellite imagery of the Direct APE, July 2025 (Source: Google Earth).....	21
Figure 15. Map of known archaeological surveys, sites, and historic standing structures within 1 mi (1.6 km) of project area (LDOA).	26
Figure 16. Depiction of transects, shovel tests and no digs.....	29
Figure 17. Delineation map of Site 16LY84.	33
Figure 18. Sketch map of delineation of site 16LY84.....	34
Figure 19. Depiction of artifacts collected from the newly determined eastern boundaries of Site 16LY84: embossed aqua glass body and glazed stoneware body.	35
Figure 20. Delineation map of Chemin Scatter Site (16LY165).	38
Figure 21. Sketch map of delineation of Chemin Scatter Site (16LY165).	38
Figure 22. Depiction of artifacts collected from Chemin scatter site (16LY165): crazed whiteware rim, blue hand painted ironstone rim, annular banded ironstone rim, glazed ironstone body.	39
Figure 23. Delineation map of Isolated Find.....	40
Figure 24. Flooded area, facing east.	41
Figure 25. Flooded area, facing northeast.	41
Figure 26. Flooding within the crops, facing down.....	42
Figure 27. Sugar Cane crop, facing southwest.	42
Figure 28. Harvested sugar cane field, facing north.	43
Figure 29. Harvested sugar cane field, facing east.	43
Figure 30. Depiction of proximity of standing structures to the Direct APE.	44

LIST OF TABLES

Table 1. Projects within 1 mi (1.6 km) of APE.	22
Table 2. Archaeological Sites within 1 mi (1.6 km) of APE.....	24
Table 3. Standing Structures within 1 mi (1.6 km) of APE.	25
Table 4. Representative Munsell Soil Profiles.....	30
Table 5. Representative Munsell Soil Profile within Site No. 16LY84.	31
Table 6. Tally of artifacts collected within new eastern boundaries of Site 16LY84.	32
Table 7. Representative Munsell Soil Profile of Chemin Scatter Site (16LY165).	36
Table 8. Tally of artifacts collected within boundaries of Chemin Scatter Site (16LY165).	36

CHAPTER ONE: INTRODUCTION

Between January 19th and February 13th, 2026, Surveys Unlimited Research Associates, Inc. (SURA, Inc.) conducted a Phase I cultural resources survey of the Chemin 3 Site 83.5 ac (33.79 ha) in Youngsville, Lafayette Parish, Louisiana. The direct APE consisted of a partly harvested sugar cane field. The approximate center of the Direct APE is 599287.13 m Easting and 3328356.46 m Northing. The field crew consisted of Stephanie Banta, Katt Doucet, Patrick Bradley, and Brad Griffen. A total of 119 high probability and 157 low probability shovel tests were excavated, no positive shovel tests were discovered, and 25 shovel tests were unable to be dug due to standing water from seasonal rain. Site 16LY84 was revisited and the eastern boundary was expanded. In addition, the Chemin Scatter Site (16LY165) and an isolated find were discovered. Sixty-two delineation shovel tests were excavated in the cardinal directions within the direct APE. No subsurface deposits were discovered. The indirect APE was 1,000 ft (304.8 m). None of the standing structures within the indirect APE were eligible for the National Register of Historic Places (NRHP). This survey was completed to secure funding from the Department of Louisiana Economic Development (LED) under the Certified Sites Program.

The following chapters in this report describe the environmental setting, previous archaeological investigations, the methodology employed in the survey, the survey's results, and the study's conclusions and recommendations.

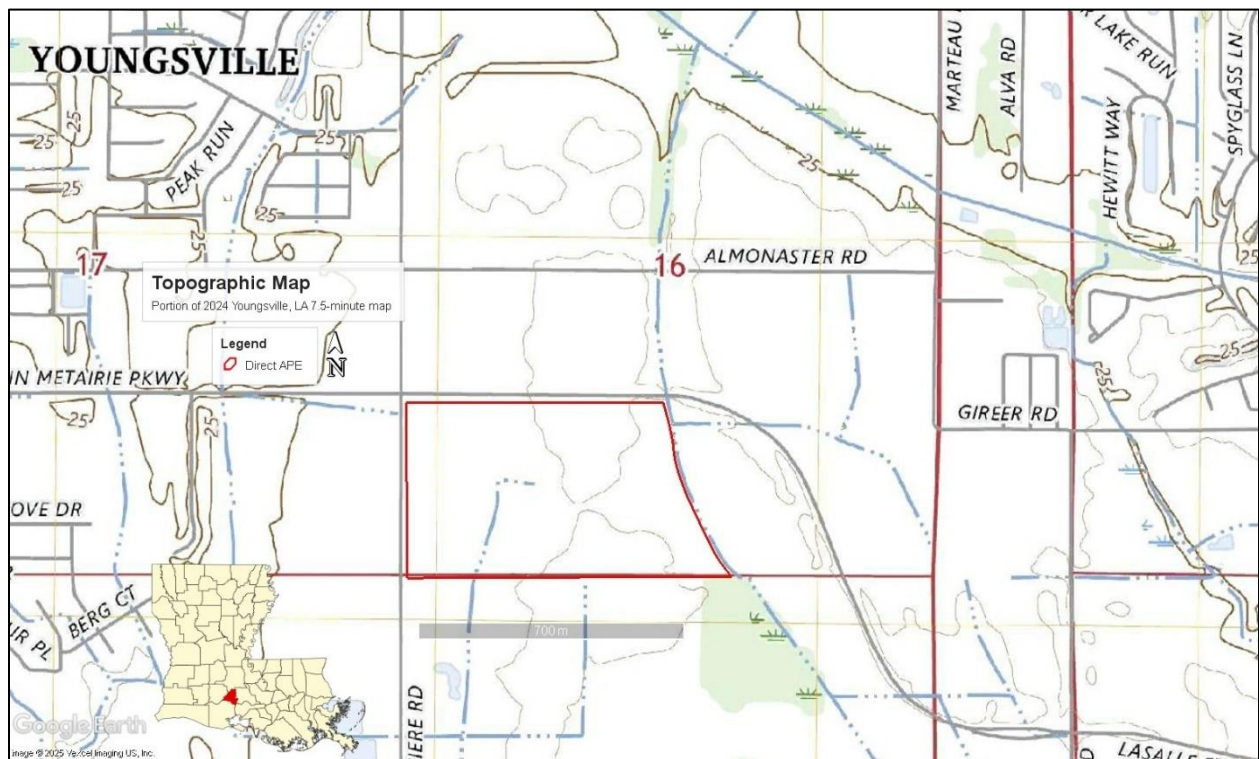


Figure 1. Topographic Quadrangle of Youngsville, LA 7.5' map.

CHAPTER TWO: LAND USE HISTORY

Geology and Geomorphology

The natural setting of the project area and surrounding territory is the product of several factors. Among these are the chronology of deltaic development in the Lower Mississippi River Valley, the dynamics of distributary channel development from crevasses in the natural levee of the Mississippi River, the interface between swamps and marshes, and saltwater intrusion as part of coastal erosion. All of these geomorphological factors have contributed to topographic, floral, and faunal aspects of the project area. They have also contributed to our understanding of the locations of archaeological sites and prehistoric settlement patterns within the surrounding region. The environmental setting applicable to the current project area has been described and studied in a variety of other reports and monographs. Two of the more important are Recent Geomorphic History of the Pontchartrain Basin (Saucier 1963) and Geomorphology and Quaternary Geologic History of the Lower Mississippi River (Saucier 1994).

The Teche course of the Mississippi was crucial in creating the natural environment that has existed in this area for the past 4,000 years or so. Today's Bayou Teche flows along the highest portion of a meanderbelt ridge, the Teche Ridge, which was created by the Teche course of the ancestral Mississippi River (Gibson 1975:1; Fisk 1944). Due to its extreme elevation of 10.5 ft (3.2 m) to 30.2 ft (9.2 m) above sea level, the stream has no natural tributaries. Its source is at Bayou Courtableau near Port Barre, from whence it flows southward for nearly 124 mi (200 km) until it reaches the Lower Atchafalaya River (Gibson 1975:1).

Soils

Three soil types are present within the direct APE, Coteau silt loam (CoA), Frost silt loam (FoA) and Coteau-Frost complex (CtB). The soil types found within the direct APE are characterized as frequently flooded, somewhat poorly drained and prime farmland (Figure 3).

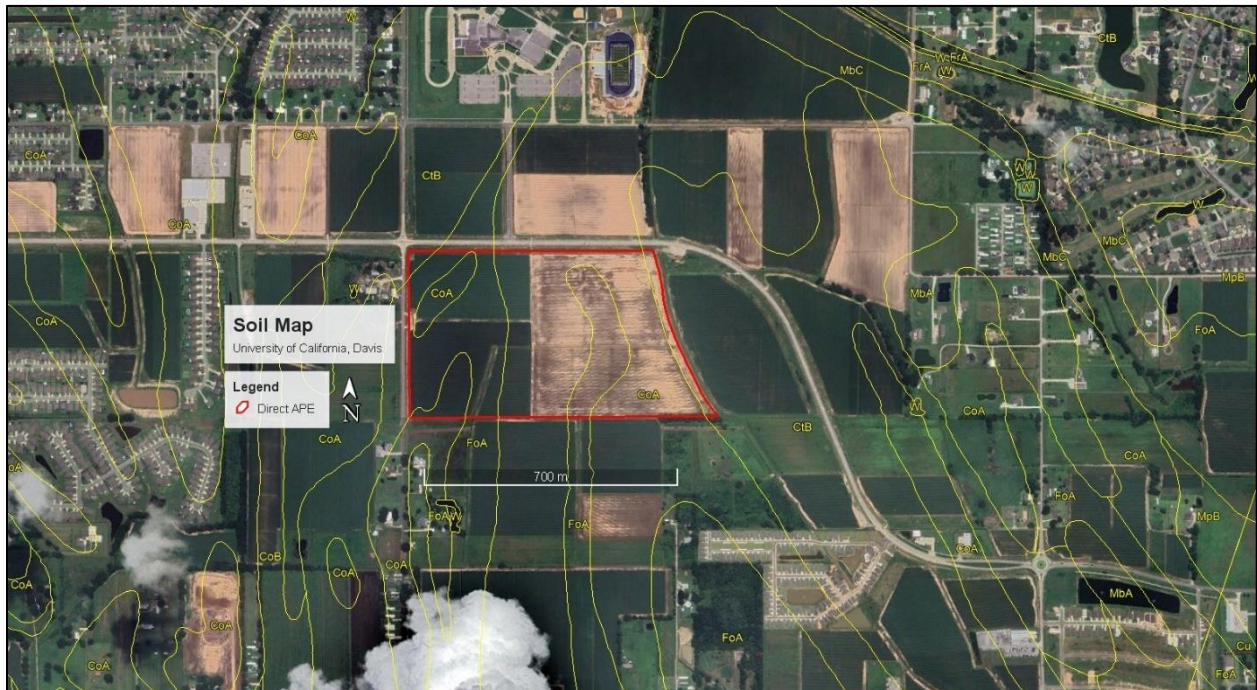


Figure 3. Soil map of Direct APE (University of California, Davis 2016/Google Earth).

Flora and Fauna

Animal life is diverse and most of the 62-mammal species found in Louisiana may at one time have been found within the area. These include white-tail deer (*Odocoileus virginianus*), cottontail rabbit (*Sylvilagus floridanus*), swamp rabbit (*Sylvilagus aquaticus*), gray squirrel (*Sciurus carolinensis*), fox squirrel (*Sciurus niger*), skunk (*Mephitis mephitis*), black bear (*Euarctos americanus*), raccoon (*Procyon lotor*), mink (*Mustela vison*), beaver (*Castor canadensis*), opossum (*Didelphus virginiana*), bobcat (*Lynx rufus*), gray fox (*Urocyon cinereoargenteus*) and red fox (*Vulpes fulva*) (Lowery 1974). Birds include such predators as the great horned owl (*Bubo virginianus*), barred owl (*Strix platypterus*), marsh hawk (*Circus cyaneus*), and many others. Non-predatory types include woodcocks (*Philohela minor*), wood ducks (*Aix sponsa*), bobwhite quail (*Colinus virginianus*), and mourning doves (*Zenaidura macroura*) (Lowery 1955).

Reptile life is particularly diverse, owing to the heterogeneity of habitats in the area. Included are alligators (*Alligator mississippiensis*), several species of snakes, including the cotton mouth (*Agkistrodon piscivorus*), and varied species of lizards and turtles. Amphibians include species of salamanders, frogs, and toads (Dundee and Rossman 1989).

Fish life is very prolific in this part of Louisiana and no doubt was likewise prehistorically. Prominent fish species are gar (*Lepisosteus spp*), largemouth bass (*Micropterus salmoides*), and bluegill (*Lepomis macrochirus*), among many others.

Historic Land Use

Beginning in 1939, several two-track roads, standing structures, and waterways are present within and surrounding the direct APE. By 2015, some standing structures have come and gone, and some two-track roads are now visible to the northeast and northwest of the direct APE. By 2020, some more two-track roads are now present to the southwest and west of the direct APE.

Topographic Maps

Beginning in 1939, several two-track roads are present surrounding the direct APE, with standing structures lining the two-track roads. Waterways are seen within and surrounding the direct APE. Standing structures are also visible around the waterways to the south and northeast of the direct APE (Figure 4).

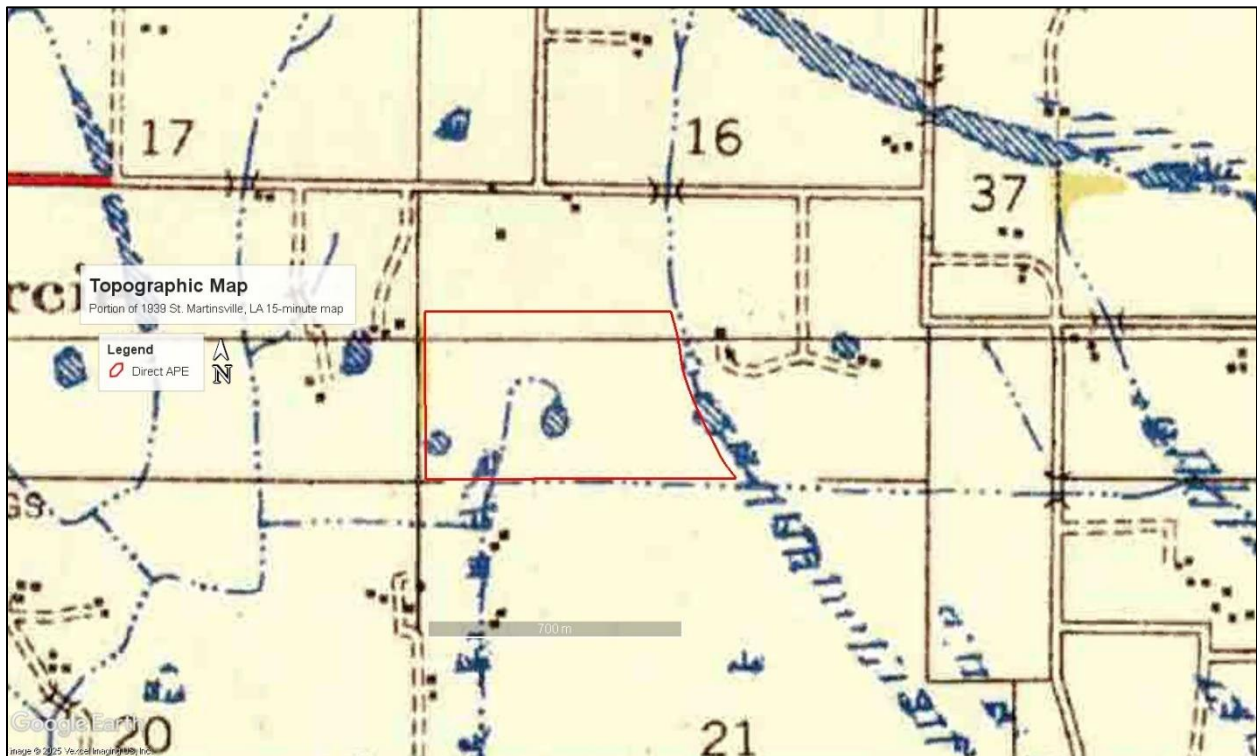


Figure 4. Portion of 1939 St. Martinsville, LA 15-minute map (Source: USGS).

By 1957, several standing structures are no longer present surrounding the direct APE (Figure 5).



Figure 5. Portion of 1957 St. Martinsville, LA 15-minute map.

By 1970, a few standing structures are now seen to the south and east of the direct APE. A standing structure is not present anymore to the northwest of the direct APE (Figure 6).



Figure 6. Portion of 1970 St. Martinsville, LA 15-minute map.

By 2015, a few roads are now present to the northwest of the direct APE, including Peak Run, Clay Ridge Drive, and Hill Ridge Drive. A few other roads are also now seen to the northeast of the direct APE, including Spyglass Lane (Figure 7).

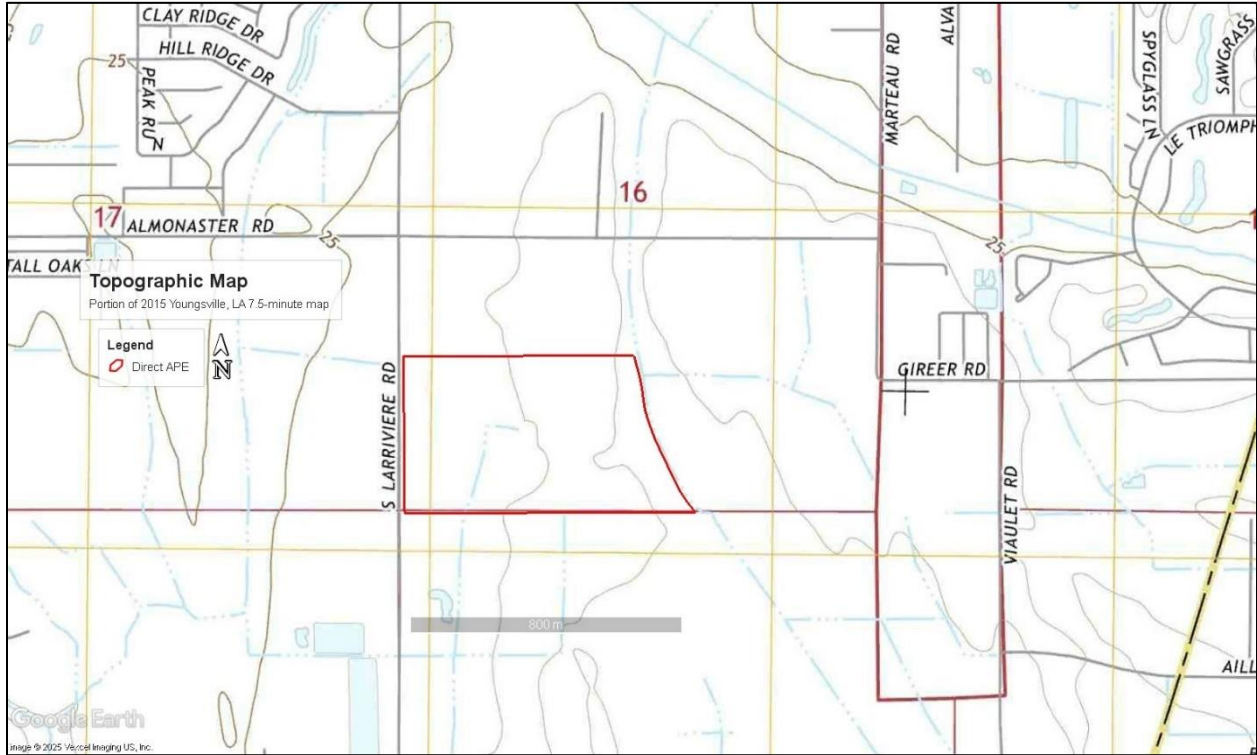


Figure 7. Portion of 2015 Youngville, LA 7.5-minute map.

By 2018, Chemin Metairie Parkway is now present to the north of the direct APE, curving to the east. A couple of roads are also seen to the west and northwest of the direct APE (Figure 8).

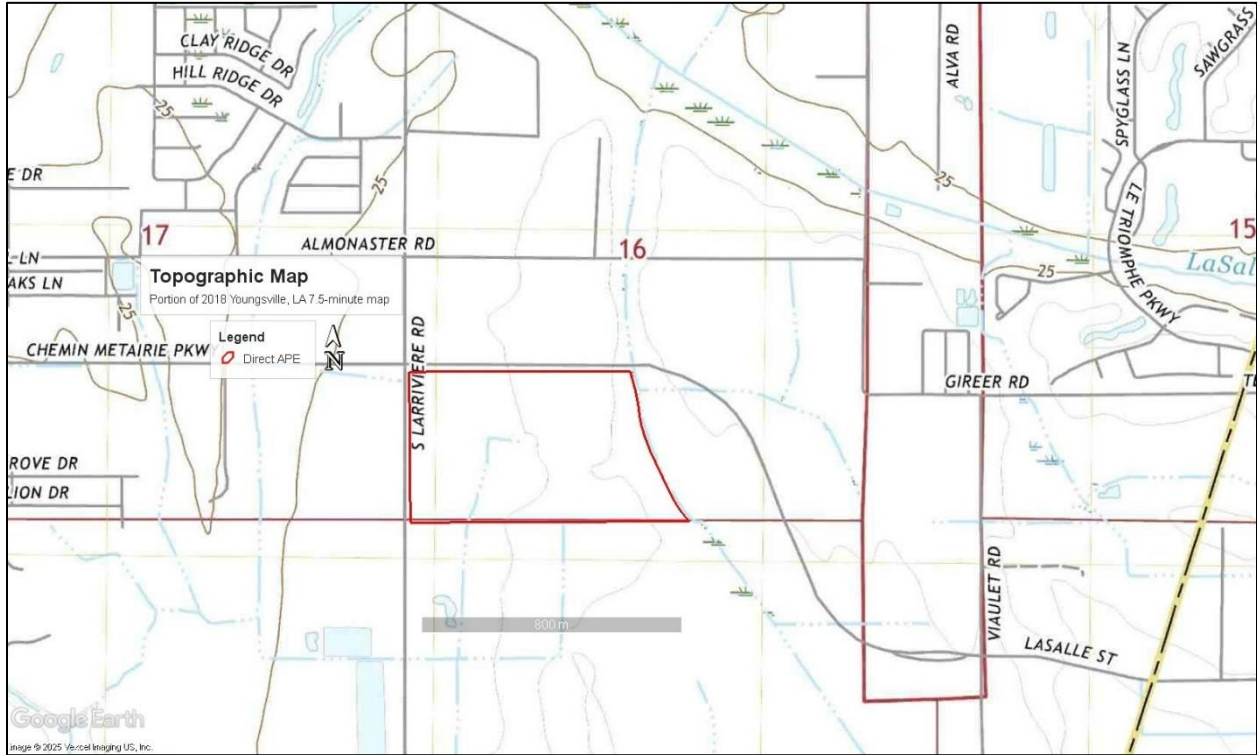


Figure 8. Portion of 2018 Youngsville, LA 7.5-minute map.

By 2020, a couple of roads are now seen to the southwest of the direct APE, including Berg CT (Figure 9).

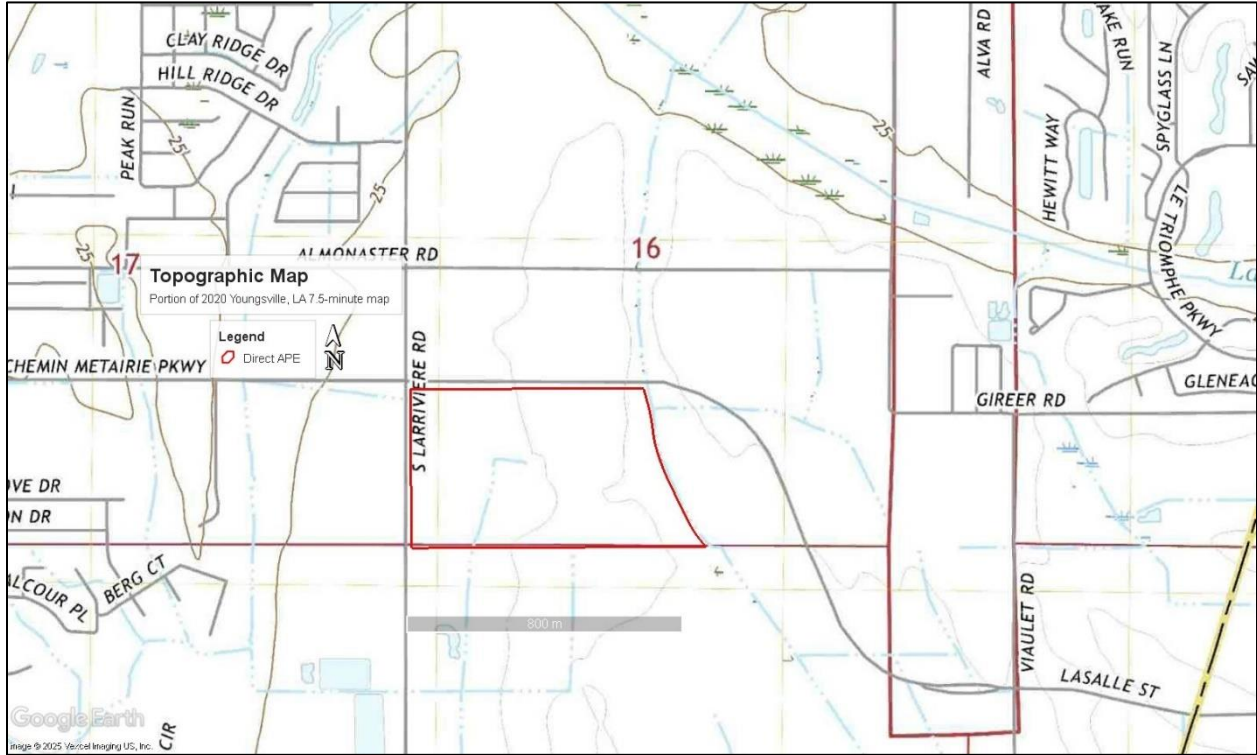


Figure 9. Portion of 2020 Youngville, LA 7.5-minute map.

Satellite Imagery

Beginning in February 1998, many standing structures are present to the northeast and northwest of the direct APE, along with several more surrounding the east, west, and south of the direct APE. Several roads surround the direct APE on all sides. Small, forested areas are seen on all sides of the direct APE; however, cleared land is the majority within and surrounding the direct APE (Figure 10).



Figure 10. Satellite imagery of the Direct APE, February 1998 (Source: Google Earth).

By November 2006, development is shown to the northwest and northeast of the direct APE, with several small roads and standing structures present. A few standing structures are also present within the direct APE, along a dirt road. Development to the southeast of the direct APE also occurred at this time (Figure 11).

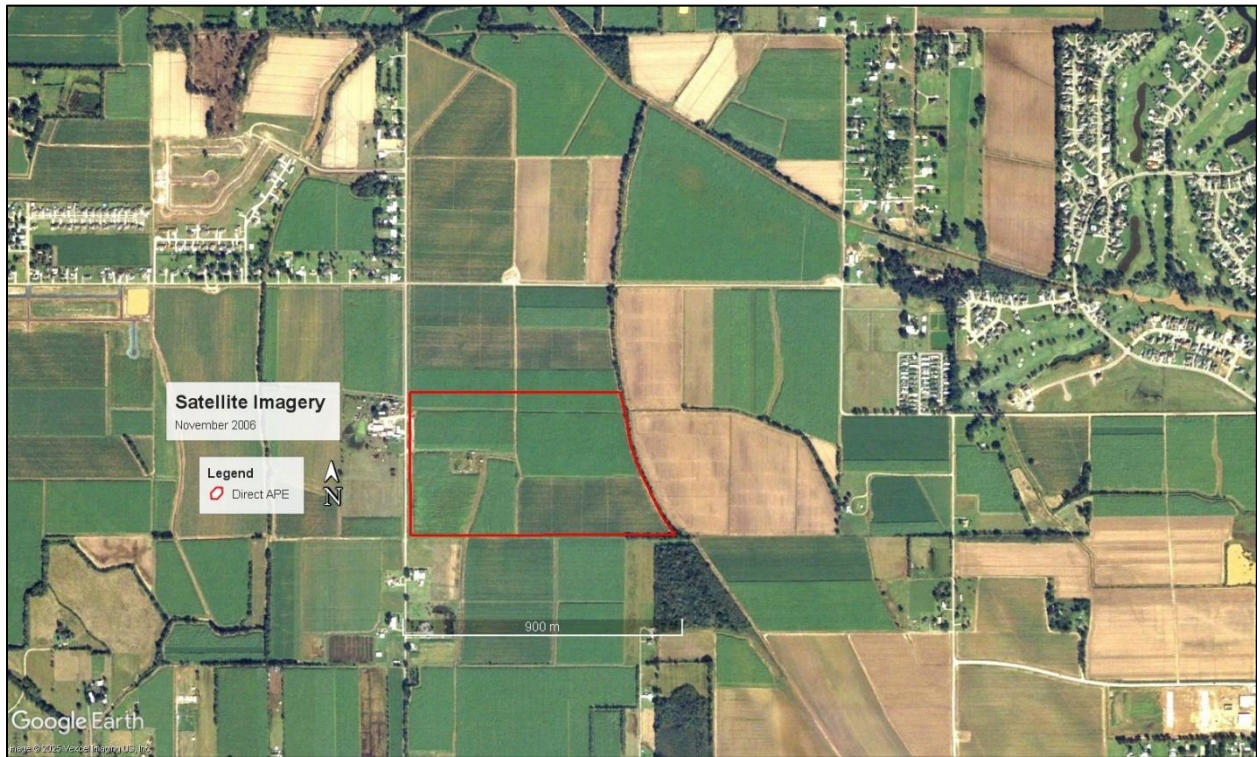


Figure 11. Satellite imagery of the Direct APE, November 2006 (Source: Google Earth).

By August 2009, development continues to the northwest and southeast of the direct APE. Standing structures within the direct APE are no longer present (Figure 12).

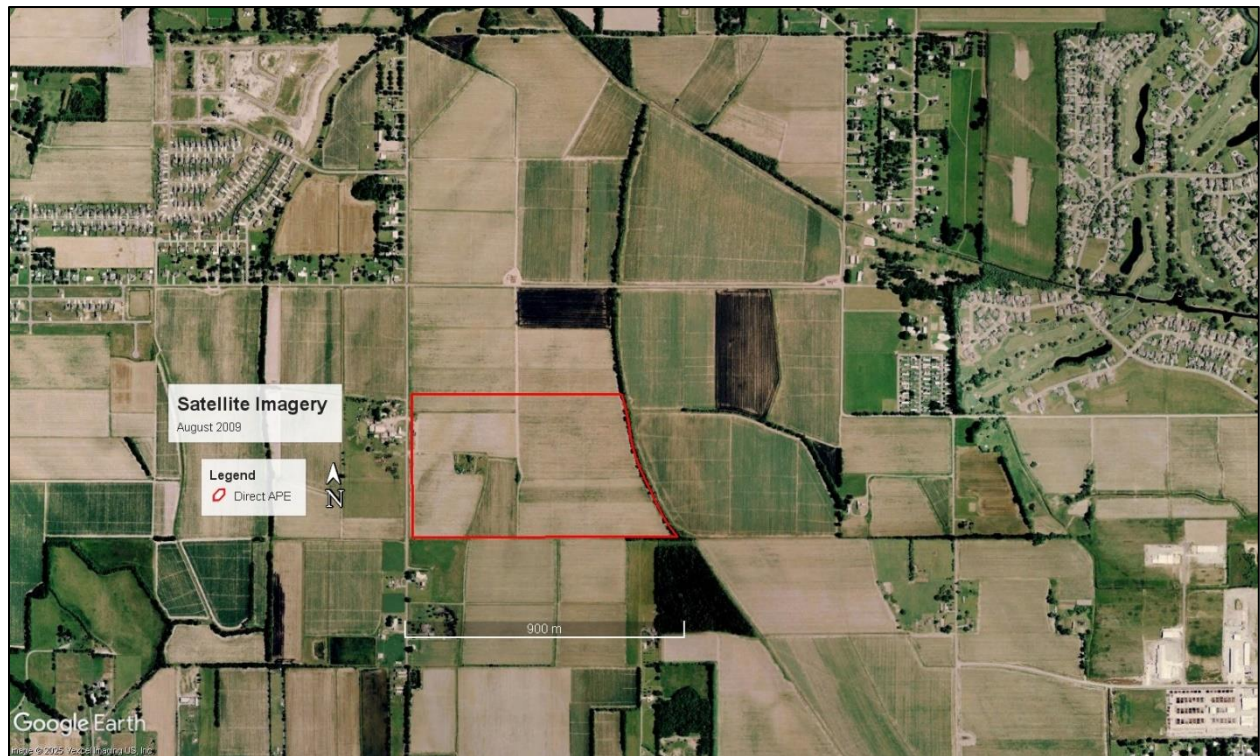


Figure 12. Satellite imagery of the Direct APE, August 2009 (Source: Google Earth).

By April 2014, development continues to the northwest of the direct APE. A road has been constructed directly north of the direct APE, curving to the south to the east of the direct APE (Figure 13).

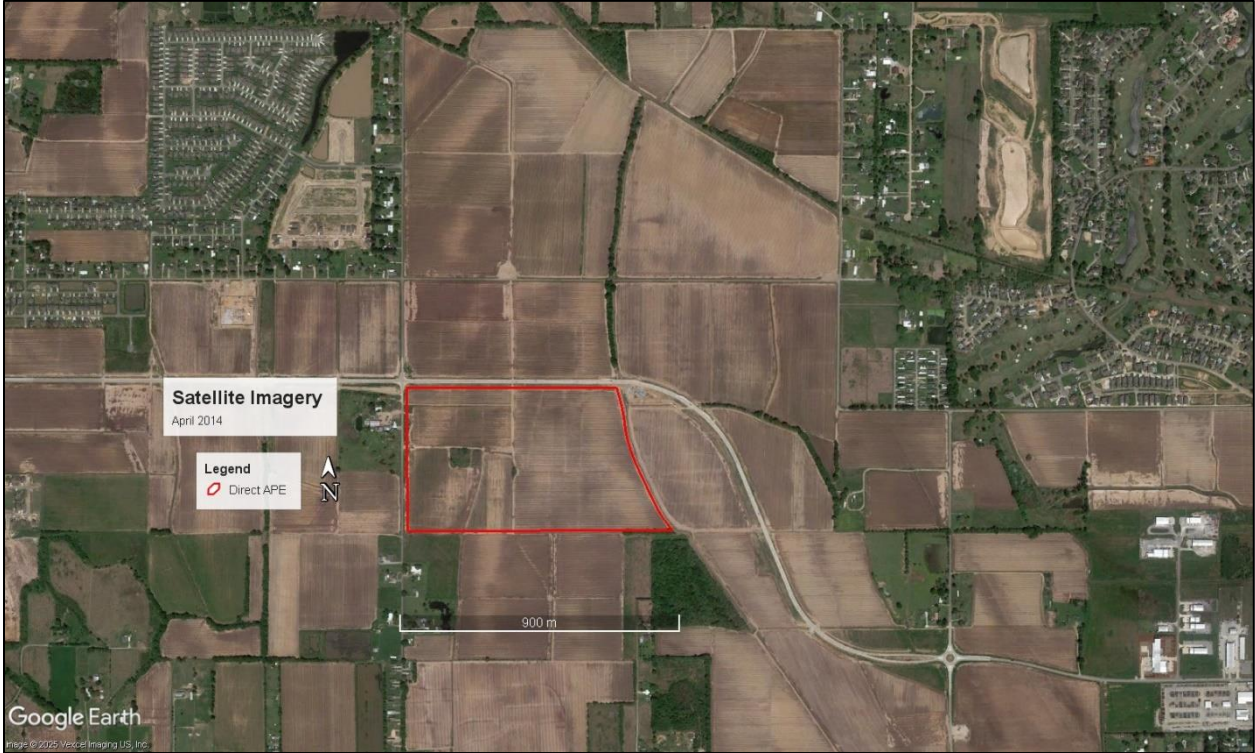


Figure 13. Satellite imagery of the Direct APE, April 2014 (Source: Google Earth).

By July 2025, development continues surrounding the direct APE on all sides, with standing structures, roads, and a school directly north (Figure 14).



Figure 14. Satellite imagery of the Direct APE, July 2025 (Source: Google Earth).

CHAPTER THREE: PREVIOUS INVESTIGATIONS

Projects within 1 mi (1.6 km) of Project Area

There are five projects recorded within 1 m (1.6 km) of the APE boundaries. These surveys are compiled in Table 1 and their proximity to the APE is depicted in Figure 19.

Table 1. Projects within 1 mi (1.6 km) of APE.

Report No.	Report Title	Contractor	Author(s)	Type of Survey	Date
22-2203	Phase I Cultural Resources Survey and Archaeological Inventory of the Proposed Tends Breaux Bridge System Pipeline Project, Vermilion, Lafayette, and St. Martin Parishes, Louisiana.	R. Christopher Goodwin & Associates, Inc.	Patrick P. Robblee, Jennifer S. Walter, Ralph Draughon, Jr., Luis M. Williams, Jr., Roger T. Saucier, and William P. Athens	Phase I	1999
22-4625	Phase I Cultural Resources Survey for the Proposed Aegis Ethane Header Pipeline Project, Segment 2, Calcasieu, Jefferson Davis, Acadia, Vermilion, Lafayette, and St. Martin Parishes.	Atkins	Darren Schubert, M.A., Robert Rowe, M.A., Michael Nash, M.A., Dana Brown, and Krista Flores	Phase I	2015
22-5173	A Phase I Cultural Resources Survey of the Bayou Bridge Pipeline, LLC Bayou Bridge Pipeline Project Acadia, Assumption, Calcasieu, Iberia, Iberville, Jefferson Davis, Lafayette, St. Martin, St. James, and Vermilion Parishes, Louisiana	Perennial Environmental Services	Zachary Overfield, Jennifer Cochran, Christopher Shelton, Michael Maddox, Abbey Peyton, Allyson	Phase I	2016

Table 1. Projects within 1 mi (1.6 km) of APE Continued.

22-5173-2	Addendum II: A Phase I Cultural Resources Survey of the Bayou Bridge Pipeline, LLC Bayou Bridge Pipeline Project Acadia, Assumption, Calcasieu, Iberia, Iberville, Jefferson Davis, Lafayette, St. Martin, St. James, and Vermilion Parishes, Louisiana	Perennial Environmental Services, LLC.	Zachary Overfield and Michael Maddox	Phase I	2016
22-6760	Phase I Cultural Resources Survey of the LaSalle Coulee Detention Pond in Lafayette Parish, Louisiana	SWCA Environmental Consultants	Caroline Marshall and Jacob Dupre	Phase I	2021

Archaeological Sites within 1 mi (1.6 km) of APE

There are seven previously recorded archaeological sites within 1 mi (1.6 km) of the APE. These sites are compiled in Table 2 and their proximity to the APE is depicted in Figure 19.

Table 2. Archaeological Sites within 1 mi (1.6 km) of APE.

Site No.	Name	Component(s)	Culture(s)	Function	NRHP Status	Last Visited
16LY83	None Given	Historic	Antebellum 1803-1860 War and Aftermath 1860-1890	Domestic Site or possibly a dump	Ineligible	1998
16LY84	None Given	Historic	19 th – early 20 th century	Unknown	Ineligible	1998
16LY85	None Given	Prehistoric and Historic	Unknown Prehistoric, 19 th - early 20 th century	Unknown	Potentially significant	1998
16LY145	None Given	Historic	War & Aftermath 1860-1890 Industrial & Modern 1890-1945	Farmstead	Ineligible	2014
16LY146	None Given	Historic	War & Aftermath 1860-1890 Industrial & Modern 1890-1945	Farmstead	Ineligible	2014
16LY151	FS-E-6	Historic	Industrial & Modern 1890-1945	Unknown	Ineligible	2016
16LY157	Forbidden Fruit Site	Historic	Industrial & Modern 1890-1945 Post-WWII 1945-	Unknown	Ineligible	2021

Standing Structures within 1 mi (1.6 km) of APE

There are four previously recorded historic standing structures located within 1 mi (1.6 km) of the APE. These standing structures are compiled in Table 2 and their proximity to the APE is depicted in Figure 19.

Table 3. Standing Structures within 1 mi (1.6 km) of APE.

LHRI Number	Name	Address	Function	Form	Condition	Listed on NRHP	Date Visited
28-02480	None Given	301 South Larriviere Road	Residence	Gable-E II	Unknown	Ineligible	2023
28-02599	None Given	602 South Larriviere Road	Residence	Ranch	Unknown	Ineligible	2023
28-03156	None Given	1121 South Larriviere Road	Residence	Minimal Tradition Cottage	Fair	Ineligible	None Given
28-04249	None Given	334 South Larriviere Road	Structure	Other	Unknown	Ineligible	2021

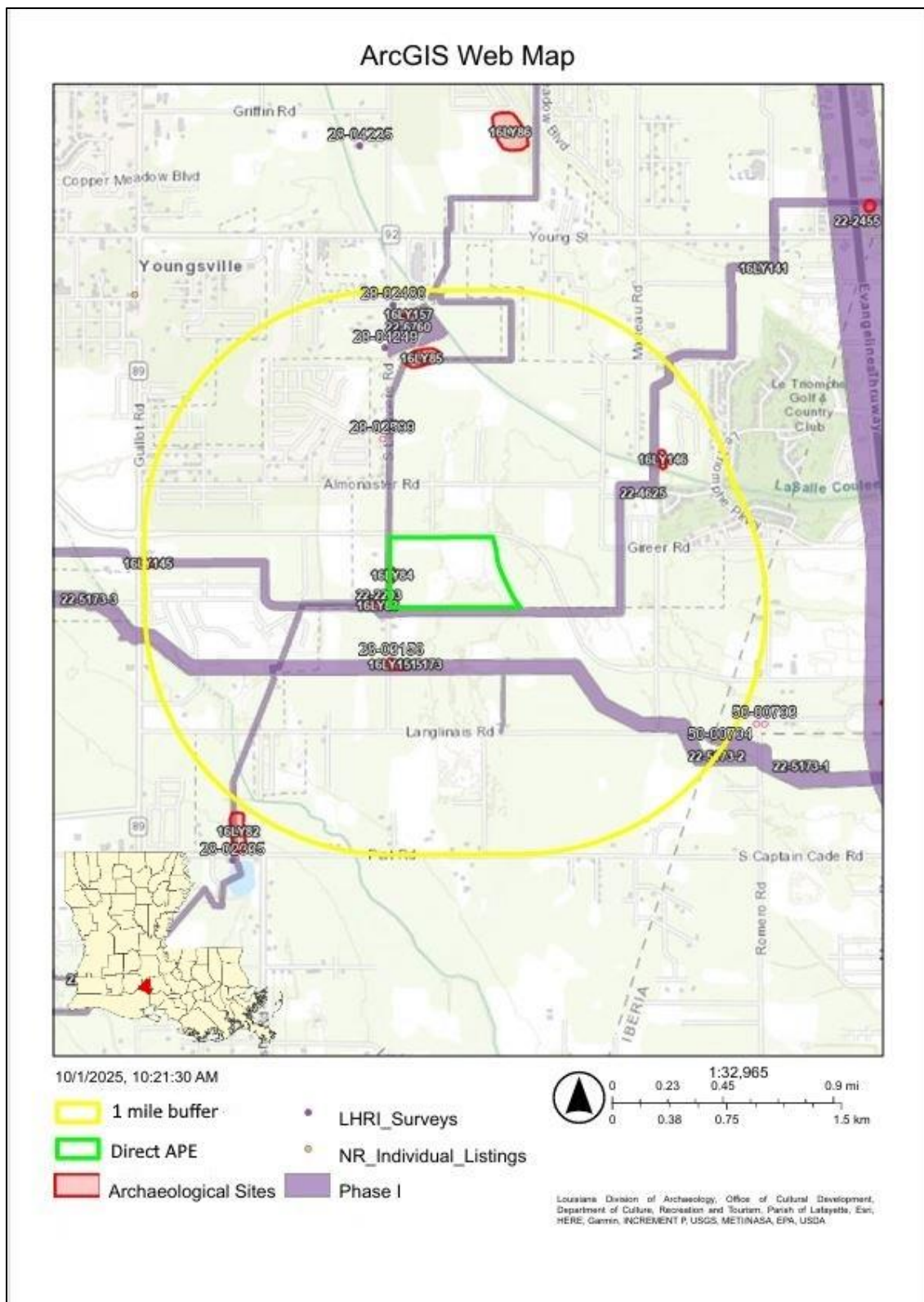


Figure 15. Map of known archaeological surveys, sites, and historic standing structures within 1 mi (1.6 km) of project area (LDOA).

CHAPTER FOUR: METHODOLOGY

Procedures

Methodology for the cultural resources survey included archival research and fieldwork. Initially, historic maps and aerial photographs at the United States Geological Survey (USGS) were consulted to determine any structures or roads that might have existed on the property in the early and mid-twentieth century. In addition, the site files and report library of the Louisiana Division of Archaeology were examined to determine archaeological sites reported for this area by previous investigators. Due to S. Larriviere Road, a historic road west of the direct APE, and two historic waterways, one within and one to the east of the direct APE, areas within the direct APE 328 ft (100 meters) or less from the historic waterways and road are considered to be high probability, while the other areas within the direct APE are considered low probability. In addition, an indirect APE of 1,000 ft (304.8 m) was determined, containing 10 standing structures. The structures were determined to be under 50 years old and, according to the National Register of Historic Places (NRHP) guidelines, are not eligible. High probability transects were spaced 98.4 ft (30 m) apart with a shovel test dug every 98.4 ft (30 m). Low probability transects were spaced 164 ft (50 m) apart with a shovel test dug every 164 ft (50 m). All shovel tests were excavated to 50 cm or clay, whichever came first. Material recovered from the shovel tests was screened using .25-inch hardware cloth. When archaeological sites are discovered, they are defined using the protocol described in the Louisiana Division of Archaeology Guidelines.

Each cultural resource site found is assessed per current National Register of Historic Places (NRHP) criteria, as given below.

Eligibility for the National Register of Historic Places

According to the National Register of Historic Places Bulletin 15 (1995:2), "The quality of significance in American history, architecture, archaeology, engineering, and culture is present in districts, sites, buildings, structures, and objects that possess integrity of location, design, setting, materials, workmanship, feeling, and association are potentially eligible for the National Register of Historic Places." To evaluate this significance, four criteria have been developed. Eligible properties...

- "A. ... are associated with events that have made a significant contribution to the broad patterns of our history; or
- B. ... are associated with the lives of persons significant in our past; or
- C. ... embody the distinctive characteristics of a type, period, or method of construction or that represent the work of a master, or that possess high artistic values, or that represent a significant and distinguishable entity whose components may lack individual distinction; or...

- D. ... have yielded, or may be likely to yield, information important in history or prehistory” (NRHP 1995:2).

Curation Statement

Artifacts are returned to the SURA laboratory, washed, analyzed and catalogued and will be returned to the land owner.

CHAPTER FIVE: RESULTS OF THE SURVEY

Fieldwork

Between January 19th and February 13th, 2026, Surveys Unlimited Research Associates, Inc. (SURA, Inc.) conducted a Phase I cultural resources survey of 83.5 ac (33.79 ha) in Youngsville, Lafayette Parish, Louisiana. The direct APE consisted of a partially harvested sugar cane field. A total of 119 high probability and 157 low probability shovel tests were excavated (Figure 16). Three sets of surface scatter boundaries were delineated in the cardinal directions within the direct APE. No subsurface shovel tests were positive (Figures 24-29). A total of 14 high probability and 11 low probability shovel tests were unable to be excavated due to standing water from seasonal rain (Figures 24-26). Table 4 depicts representative Munsell soil profiles of the Direct APE.



Figure 16. Depiction of transects, shovel tests and no digs.

Table 4. Representative Munsell Soil Profiles.

Location	Depth	Munsell	Description
HP3 ST4	0-20 cmbs	3/3 10YR	Dark Brown Clay
	20-40 cmbs	5/6 10YR	Yellowish-Brown Clay
	40-50 cmbs	5/2 10YR	Grayish-Brown Clay
LP1 ST2	0-50 cmbs	4/3 10YR	Brown Clay
HP9 ST1	0-20 cmbs	6/1 10YR	Gray Clay
	20-50 cmbs	4/6 10YR	Strong Brown Clay

Site 16LY84: Previously Recorded Historic Surface Scatter Site

During transect shovel testing, SURA discovered surface artifacts overlapping the eastern boundary of site 16LY84. This had the effect of increasing the lateral size of site 16LY84 from the original 0.76 ac (0.30 ha) to an area of 0.46 ac (0.34 ha). No subsurface deposits were revealed within the original or expanded boundary. The boundary of the expanded surface scatter was determined by walking in each cardinal direction until no further artifacts were observed. Ten m interval shovel testing was then conducted in each cardinal direction from the new boundary until two consecutive negative shovel tests were performed. In an case there were no positive shovel tests.

The artifacts collected from the surface consisted of five pieces of bottle glass body, 4 clear glass and 1 embossed aqua glass, 1 sherd of stoneware rim, 2 sherds of stoneware body, and 1 oxidized piece of unidentified metal.

Site 16LY84 was originally reported by R. Christopher Goodwin & Associates, Inc., in 1998; their procedure consisted of systematic shovel testing and surface collection. A total of 38 artifacts, including 26 ceramic sherds, 10 glass shards, and 2 metal objects, were recovered. The ceramic material consisted of 19 plain whiteware sherds, 1 undecorated white ironstone sherd, 1 Bristol glazed buff domestic brown stoneware sherd, 2 annular decorated yellowware sherds, 2 yellowware sherds and 1 "Rockingham" Bennington" yellowware sherd. The glass material consisted of 3 green unidentified molded technique glass shards, 2 dark green unidentified molded technique glass shards, 1 amber unidentified blown-in-mold bottle glass shard, 1 amethyst-colored unidentified molded technique glass shard, 1 amethyst-colored pressed glass shard, 1 amethyst-colored tooled lip glass shard, and 1 clear machine-made glass shard. included a chain fragment and an unidentified cast iron fragment.) The metal artifacts included a chain fragment and an unidentified cast iron fragment.

Site 16LY84 was discovered east of S. Larriviere Rd, a historic road according to topographic maps, and west of a historic tributary. The original field crew indicated that a small building may have been standing within the site boundaries due to brick fragments being discovered. According to historic topographic maps, however, there is no indication of a standing structure being within the site boundaries, going back to 1939. The purpose of the Phase I cultural resources survey was for site certification through the Department of Louisiana Economic (LED). Due to the project being part of the site certification program, future threats are unknown currently.

Table 5. Representative Munsell Soil Profile within Site No. 16LY84.

Location	Depth	Munsell	Description
HP9 ST1	0-20 cmbs	6/1 10YR	Gray Clay
	20-50 cmbs	4/6 10YR	Strong Brown Clay

Table 6. Tally of artifacts collected within new eastern boundaries of Site 16LY84.

Ceramics			Total
Stoneware			
	Rim	1	
	Body	2	
Glass			
Clear			
	Body	4	
Aqua			
	Body	1	
Metal			
Unidentified			
	Oxidized	1	
			9

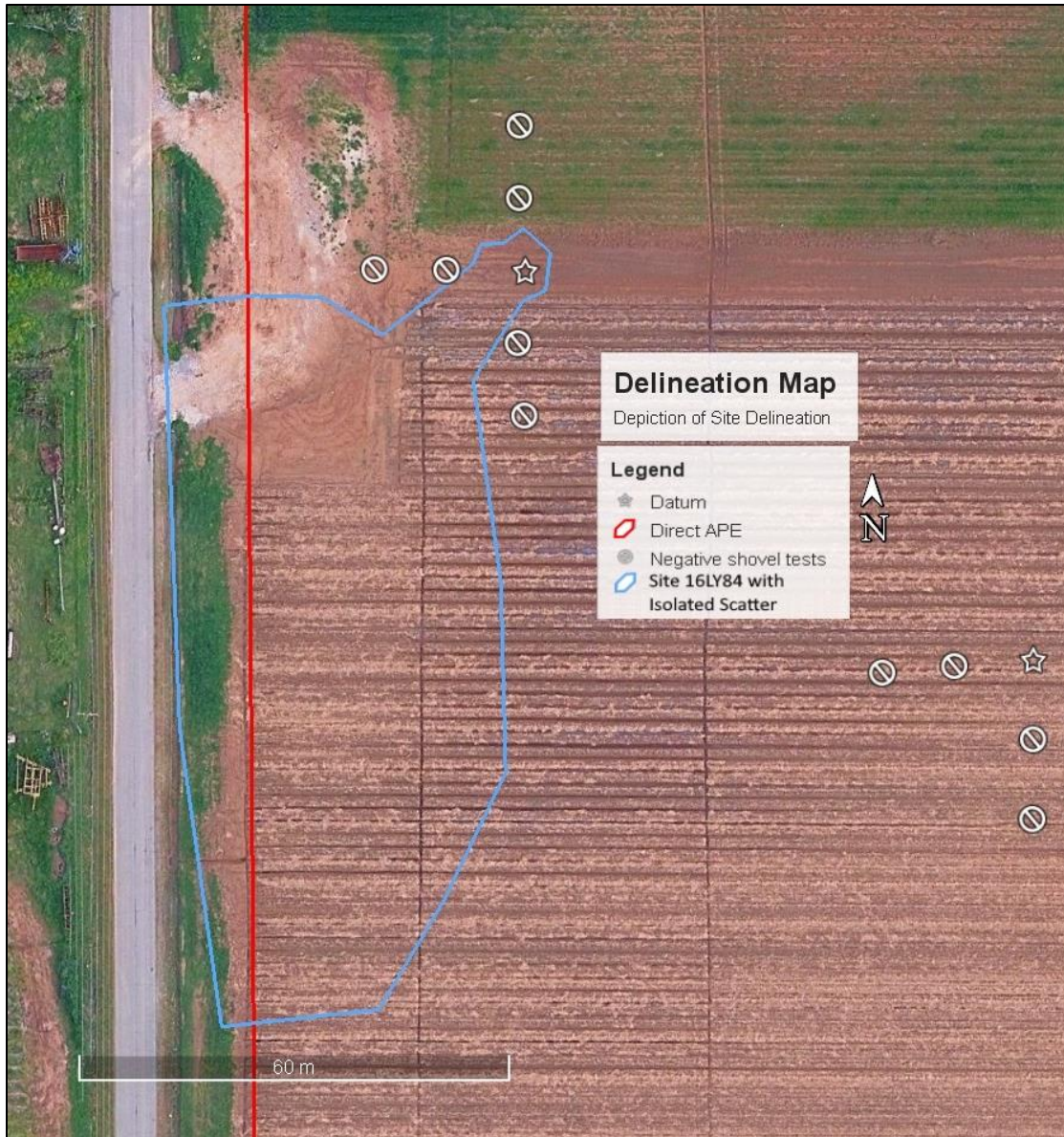


Figure 17. Delineation map of Site 16LY84.

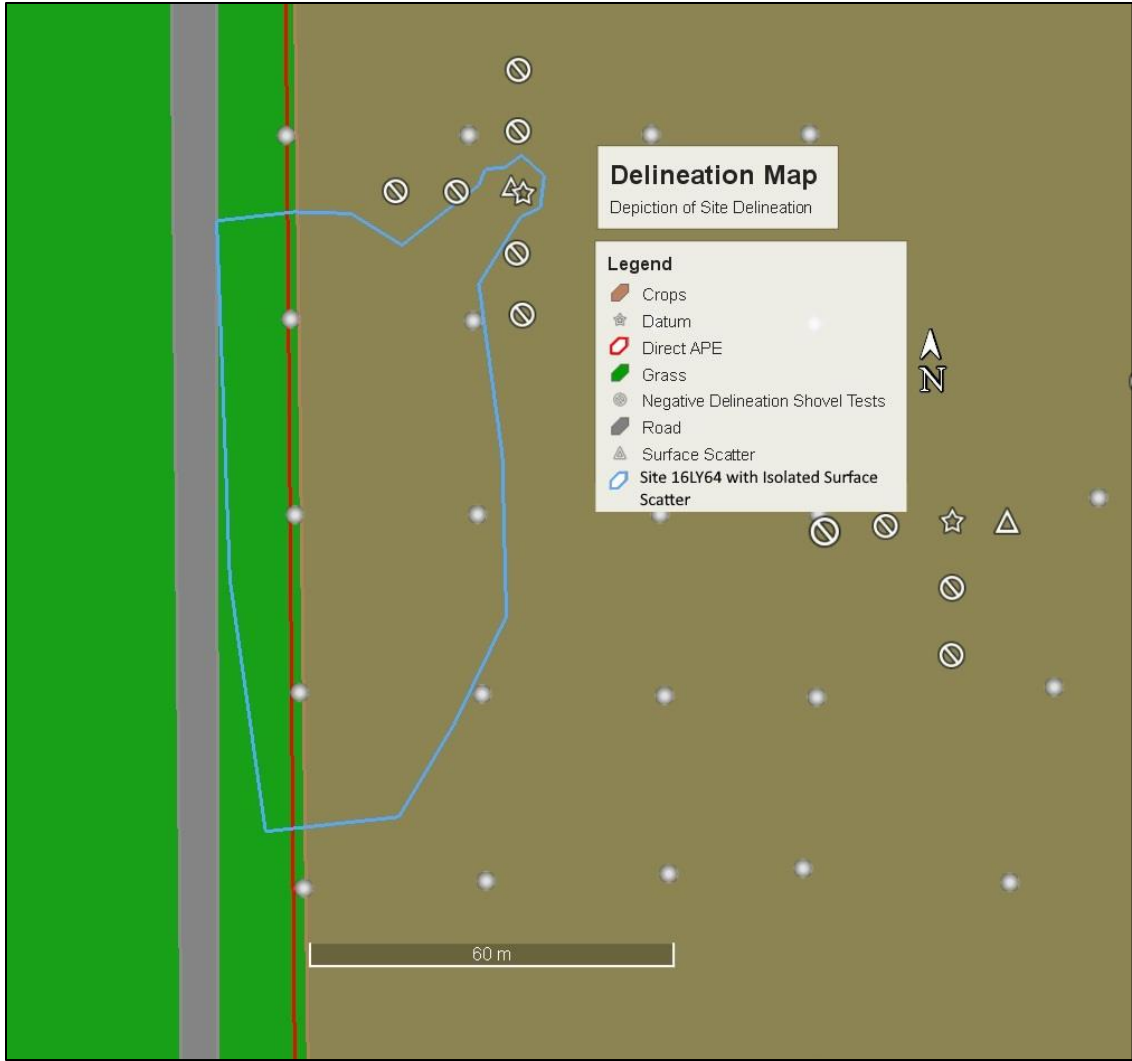


Figure 18. Sketch map of delineation of site 16LY84.



Figure 19. Depiction of artifacts collected from the newly determined eastern boundaries of Site 16LY84: embossed aqua glass body and glazed stoneware body.

Site 16LY165: Chemin Scatter Site

While excavating high probability and low probability shovel tests, multiple artifacts were discovered on the surface. The surface scatter boundaries were determined by walking each cardinal direction until the surface scatter was nonexistent. From each boundary point, delineation shovel tests were excavated in each cardinal direction at intervals of 32.8 ft (10m) until reaching two consecutive negative shovel tests. All delineation shovel tests were negative, making the area of the site 27 ac (10.9 ha). Within the site, 12 high probability and 4 low probability shovel tests were excavated, along with 70 delineation shovel tests, all of which were negative.

The artifacts collected from the surface consisted of thirty-seven pieces of bottle glass body, 6 glass lips, 1 glass base, 4 pieces of window glass, and 2 pieces of unidentified glass, one flat and one due to melting.

Three rims, including terracotta and annular banded ironstone, and 16 sherds of ceramic body, including whiteware, terracotta, and ironstone. One sherd of whiteware has visible burn marks.

One oxidized iron hinge, an oxidized iron washer, and a metal magnet. Eight pieces of oxidized unidentified metal were also collected.

Five pieces of plastic construction material were also discovered and collected.

According to topographic maps, earliest being 1939, and satellite imagery, earliest being 1998, there were no indications of standing structures previously being present within the entirety of the direct APE. The source of the surface scatter is unknown, but since the area was heavily farmed, it is likely due to farm machinery. Since the Phase I was conducted for the purpose of a site certification through the Department of Louisiana Economic (LED), it is unknown what the land will become, but it is likely that the site will be destroyed if the land is sold and developed.

Table 7. Representative Munsell Soil Profile of Chemin Scatter Site (16LY165).

Location	Depth	Munsell	Description
S2midS	0-20 cmbs	3/4 10YR	Gray Clay
	20-50 cmbs	4/6 10YR	Dark Yellowish Brown Clay

Table 8. Tally of artifacts collected within boundaries of Chemin Scatter Site (16LY165).

Ceramics			Total
Terracotta			
	Rim	1	
	Body	6	

Table 8. Tally of artifacts collected within boundaries of Chemin Scatter Site (16LY165) (Continued).

Ironstone			
	Body	4	
	Rim	1	
Whiteware			
	Body	4	
Stoneware			
	Body	2	
	Glass		
Olive			
	Body	4	
Clear			
	Body	20	
	Lip	5	
Amber			
	Body	13	
	Lip	1	
Cobalt			
	Body	2	
Aqua			
	Unidentified	1	
Flat			
	Window	4	
	Unidentified	1	
	Metal		
Iron (Oxidized)			
	Hinge	1	
	Washer	1	
	Magnet	1	
	Unidentified	8	
	Miscellaneous		
Construction Material			
	Plastic	5	
			85

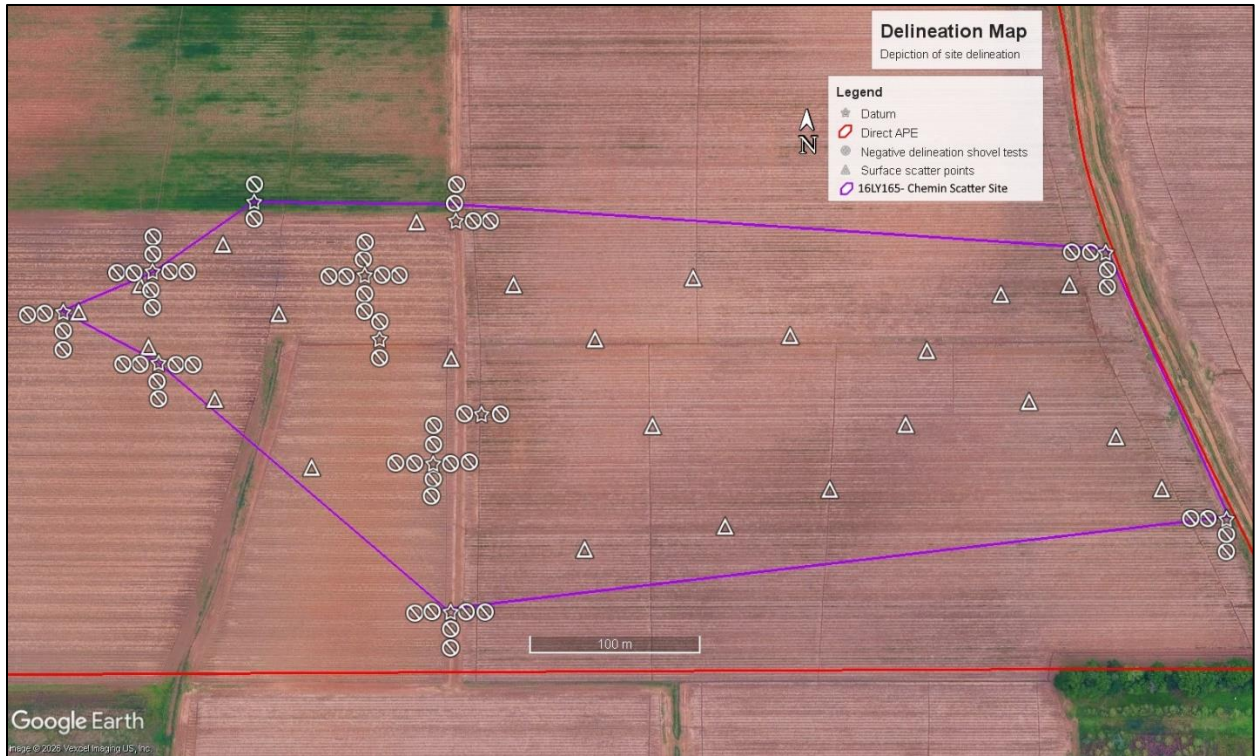


Figure 20. Delineation map of Chemin Scatter Site (16LY165).



Figure 21. Sketch map of delineation of Chemin Scatter Site (16LY165).

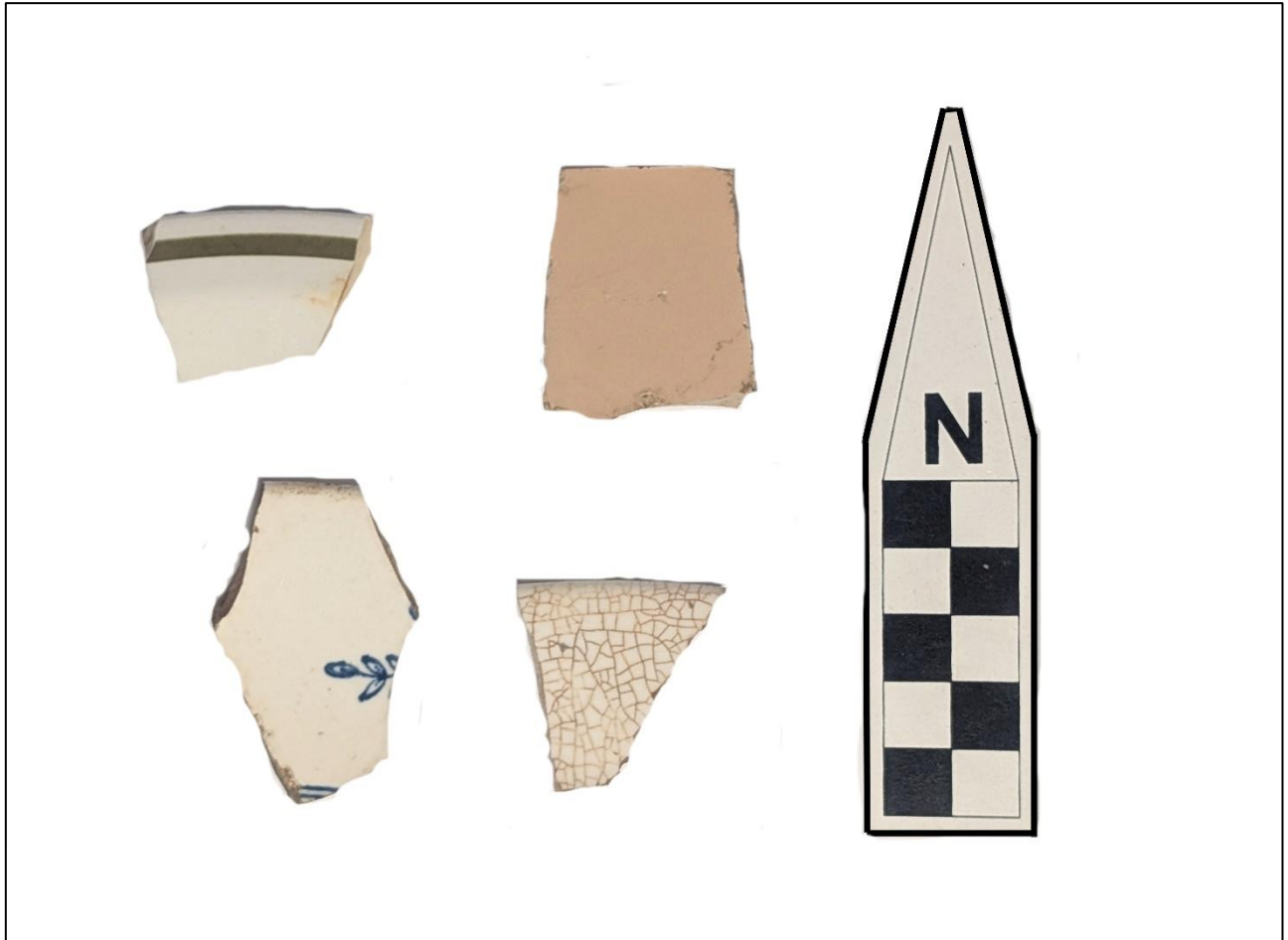


Figure 22. Depiction of artifacts collected from Chemin scatter site (16LY165): crazed whiteware rim, blue hand painted ironstone rim, annular banded ironstone rim, glazed ironstone body.

Isolated Find

While excavating high probability shovel tests, a solo artifact was discovered on the surface. From the datum point, delineation shovel tests were excavated in each cardinal direction in intervals of 32.8 ft (10m) until reaching two consecutive negative shovel tests. All the delineation shovel tests were negative. The solo artifact collected was a sherd of terracotta body. This find is not considered a site due to the paucity of artifacts found.

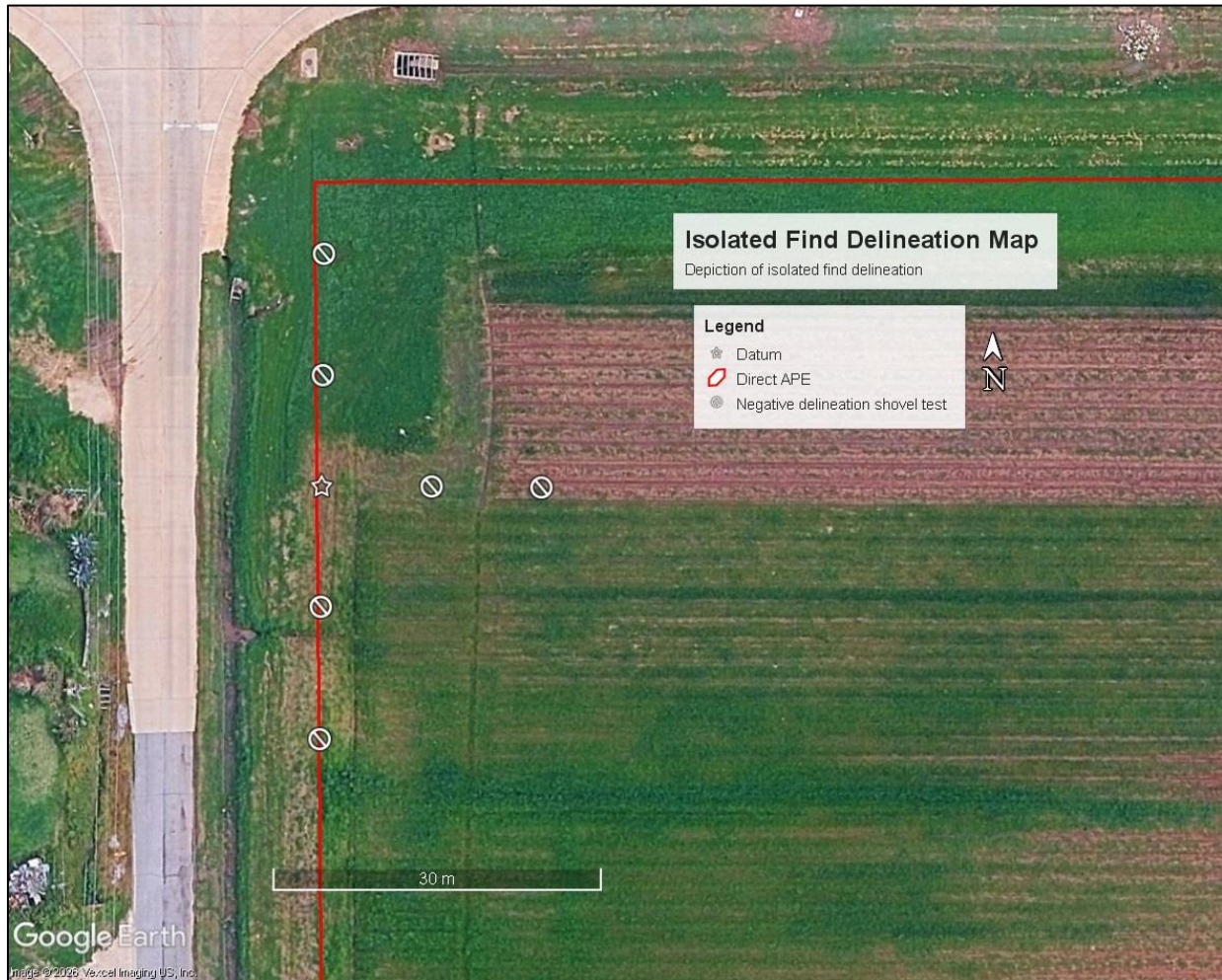


Figure 23. Delineation map of Isolated Find.



Figure 24. Flooded area, facing east.



Figure 25. Flooded area, facing northeast.



Figure 26. Flooding within the crops, facing down.



Figure 27. Sugar Cane crop, facing southwest.



Figure 28. Harvested sugar cane field, facing north.



Figure 29. Harvested sugar cane field, facing east.

Indirect APE

The indirect APE has been determined to be 1,000 ft (304.8 m) (Figure 30). There are 10 standing structures located within the indirect APE; however, none are older than 50 years old. Therefore, the standing structures are not eligible for the National Register of Historic Places (NRHP). Figure 34 shows the indirect APE in relation to the direct APE and standing structures.

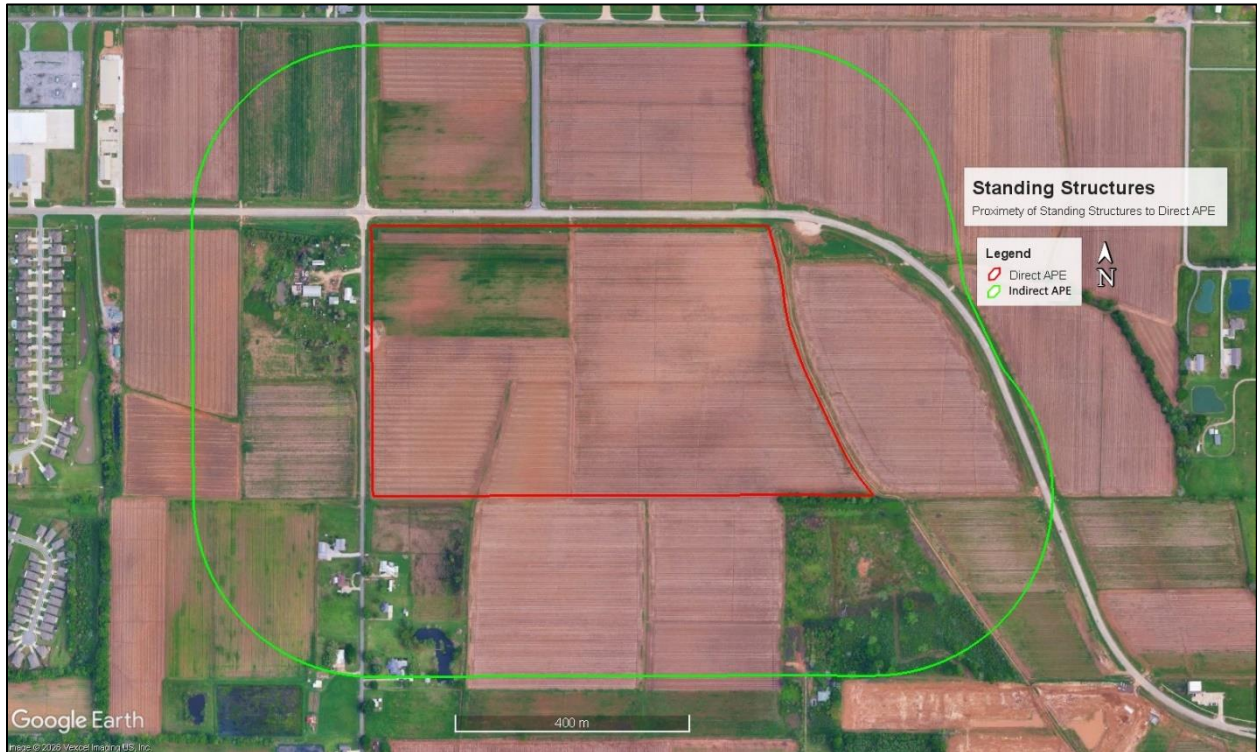


Figure 30. Depiction of proximity of standing structures to the Direct APE.

Summary of Fieldwork

From January 19 through February 13, 2026, a total of 119 high probability, 157 low probability, and 62 delineation shovel tests were excavated. All were negative. A total of 14 high probability and 11 low probability shovel tests were unable to be excavated due to standing water from seasonal rain. Site 16LY84 was revisited and the eastern boundary was expanded. In addition, Chemin scatter site (16LY165) and an isolated find were discovered, consisting of 101 historic artifacts, all found on the surface. Sixty-two delineation shovel tests were excavated in the cardinal directions within the direct APE, determining the boundaries of the sites. No subsurface findings were discovered. Due to the lack of diagnostic characteristics of the artifacts, these historic scatters are not considered NRHP eligible.

CHAPTER SIX: CONCLUSIONS AND RECOMMENDATIONS

Between January 19 through February 13, 2026, Surveys Unlimited Research Associates, Inc. (SURA, Inc.) conducted a Phase I cultural resources survey of the Chemin 3 Site, 83.5 ac (33.79 ha) in Youngsville, Lafayette Parish, Louisiana. This survey was completed to secure funding from the Department of Louisiana Economic Development (LED) under the Certified Sites Program. The direct APE consisted of an agricultural sugar cane field, partly harvested. A total of 119 high probability and 157 low probability shovel tests were excavated, no positive shovel tests were discovered, and 25 shovel tests were not excavated due to standing water. Site 16LY84 was revisited and the eastern boundary was expanded. In addition, Chemin scatter site (16LY165) and an isolated find were discovered, consisting of 101 historic artifacts, all found on the surface. Sixty-two delineation shovel tests were excavated in the cardinal directions within the direct APE, determining the boundaries of the sites. No subsurface findings were discovered. Due to the lack of diagnostic characteristics, these two sites are not considered NRHP eligible as they do not qualify for the NRHP under Criterion D, information potential. Consequently, it is recommended that the proposed development be allowed to proceed as planned.

REFERENCES CITED

- Dundee, Harold A. and Douglas A. Rossman
1989 *The Amphibians and Reptiles of Louisiana*. Louisiana State University Press. Baton Rouge, Louisiana.
- Fisk, Harold N.
1944 *Geological Investigation of the Alluvial Valley of the Lower Mississippi River*. Mississippi River Commission, U.S. Army Corps of Engineers, Vicksburg District. Vicksburg, Mississippi.
- Gibson, Jon L.
1982 The Troyville-Baytown Issue. *Louisiana Archaeology* 9:29-62.

1994 Before Their Time? Early Mounds in the Lower Mississippi Valley. *Southeastern Archaeology* 13:162–186.
- Louisiana Division of Archaeology (LDOA)
v.d. Site Files. Louisiana Division of Archaeology, Baton Rouge.
- Lowery, George H.
1955 *Louisiana Birds*. Louisiana State University Press, Baton Rouge.

1974 *The Mammals of Louisiana and its Adjacent Waters*. Louisiana State University Press, Baton Rouge
- Saucier, Roger T.
1963 *Recent Geomorphic History of the Pontchartrain Basin*. Louisiana State University Press, Coastal Studies Series No 9. Baton Rouge, Louisiana.

Websites

LDOA (Louisiana Division of Archaeology)

www.state.la.us/cultural-development/archaeology/databases. Accessed March 2026.

University of California, Davis (California Soil Resource Lab)

casoilresource.lawr.ucdavis.edu/soil_web/kml/mapunits.kml. Accessed March 2026.

USGS (United States Geological Survey)

www.USGS.gov/pubprod. Accessed March 2026.

Maps

St. Martinville, La. (1939) 15-Minute Topographic map. U.S. Geological Survey.

St. Martinville, La. (1957) 15-Minute Topographic map. U.S. Geological Survey.

St. Martinville La. (1970) 15-Minute Topographic map. U.S. Geological Survey.

Youngsville, La. (2015) 7.5-Minute Topographic map. U.S. Geological Survey.

Youngsville, La. (2018) 7.5-Minute Topographic map. U.S. Geological Survey.

Youngsville, La. (2020) 7.5-Minute Topographic map. U.S. Geological Survey.