

Exhibit I.

Highland Park Mixed-Use Development Site

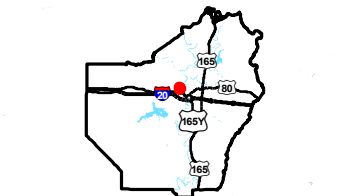
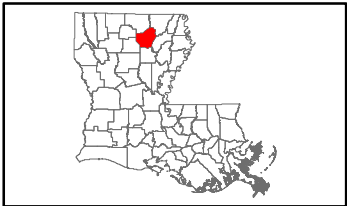
All Utilities Infrastructure Site Map



Highland Park Mixed-Use Development Site All Utilities Infrastructure Site Map

Highland Park Mixed-Use Development Site
Ouachita Parish, LA

NELEA



Ouachita Parish

LEGEND

- Site Boundary
- AT&T Telecommunication Lines
- Atmos 4-inch Natural Gas Distribution Line
- City of West Monroe Potable Water Infrastructure
 - 6-inch Potable Water Line
 - 8-inch Potable Water Line
 - 10-inch Potable Water Line
 - 12-inch Potable Water Line
- City of West Monroe Waste Water Infrastructure
 - 8-inch Sewer Line
- Entergy Electrical Infrastructure
 - Single Phase Distribution
 - Two Phase Distribution
 - 3-Phase Distribution
 - 115 kV Electrical Transmission



ECONOMIC ALLIANCE

NELEA

Date: 3/6/2020

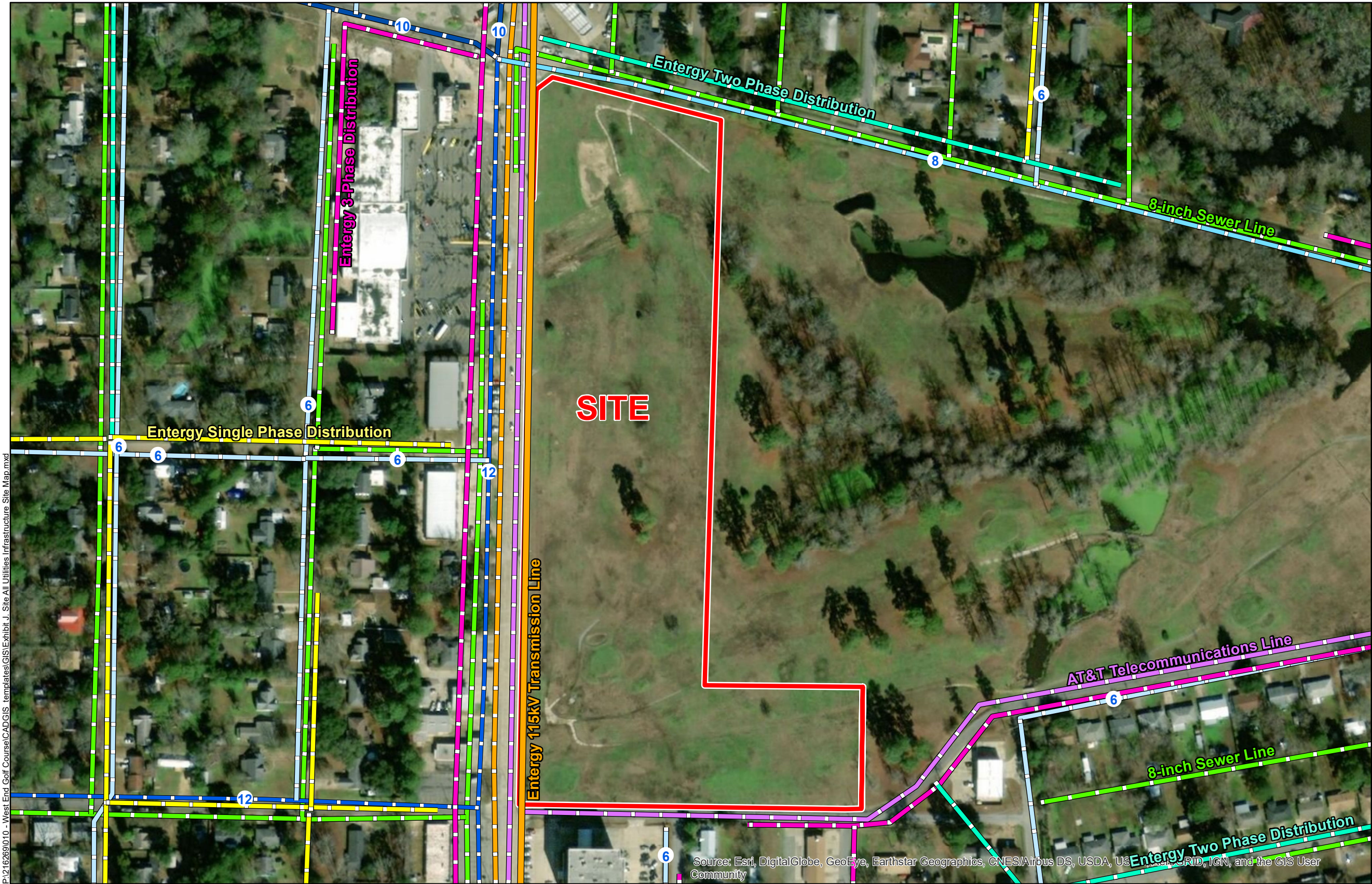
Project Number: 216269

Drawn By: BNF

Checked By: DWK

CSRS

P:\216269\010 - West End Golf Course\CAD\GIS templates\GIS\Exhibit J. Site All Utilities Infrastructure Site Map.mxd



General Notes:

1. No attempt has been made by CSRS, Inc. to verify site boundary, title, actual legal ownership, deed restrictions, servitudes, easements, or other burdens on the property, other than that furnished by the client or his representative.
2. Transportation data from 2013 TIGER datasets via U.S. Census Bureau at <ftp://ftp2.census.gov/geo/tiger/TIGER2013>.
3. Utility information from visual inspection and/or the individual utility operators. Exact field location has not been determined by survey. The lines shown are an approximate representation only and may have been offset for depiction purposes.
4. 2015 aerial imagery from USDA-APFO National Agricultural Inventory Project (NAIP) and may not reflect current ground conditions.



Scale 1:2,500

0 130 260 Feet

Source: Esri, DigitalGlobe, GeoEye, Earthstar Geographics, CNES/Airbus DS, USDA, USGS, AeroGRID, IGN, and the GIS User Community