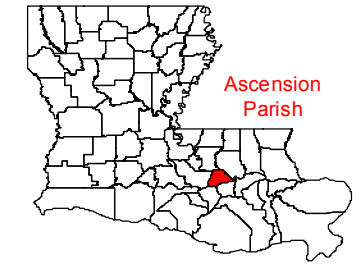
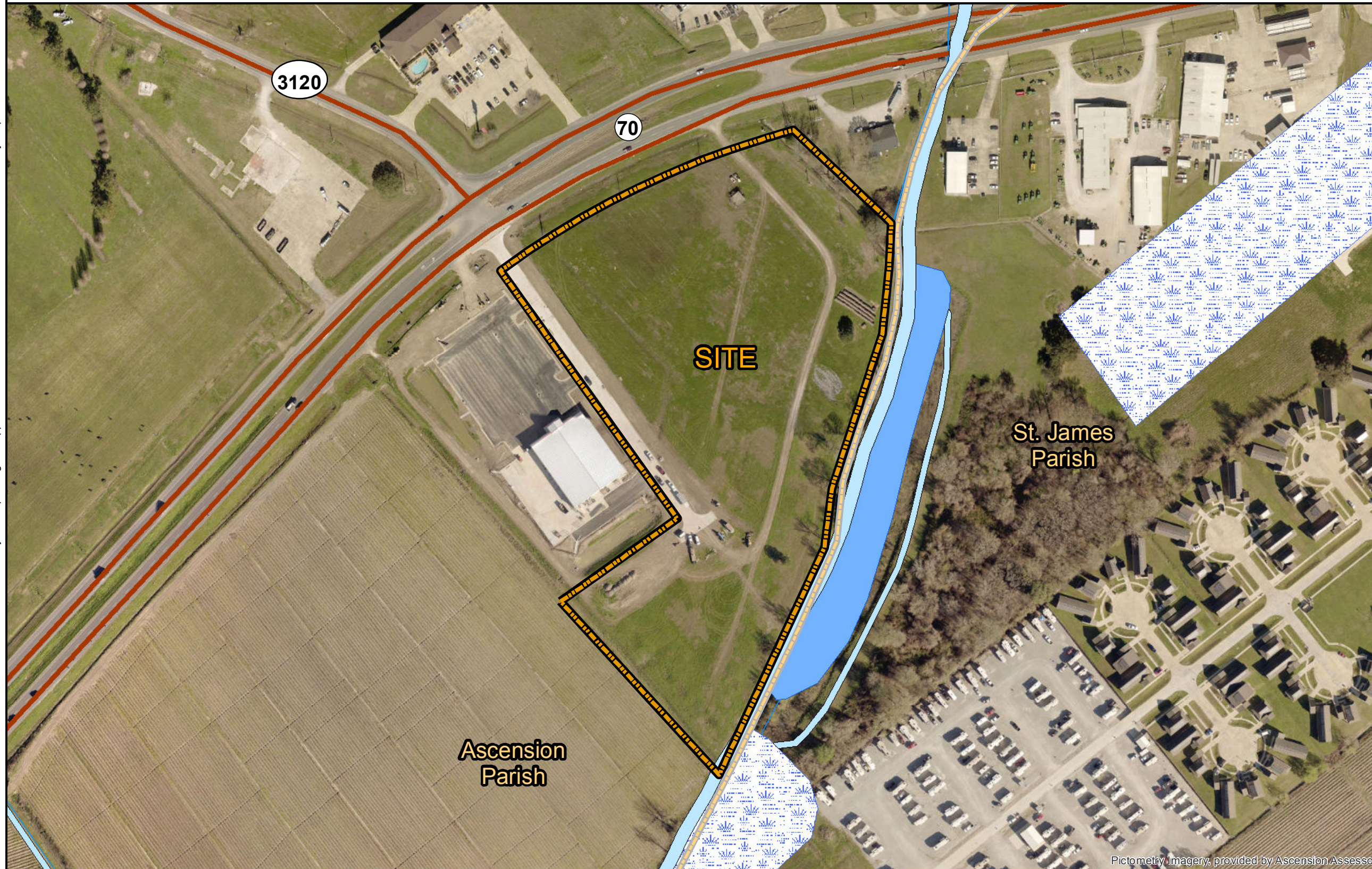


Exhibit Q. Foti - Highway 70 National Wetlands Inventory Map




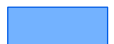





Foti - Highway 70 National Wetlands Inventory Map

Document Path: R:\DWG\16-000\16-392\Foti Sites\Foti - Hwy 70\Maps\Program Application Exhibits\Exhibit Q - National Wetlands Inventory Map.mxd



LEGEND

-  Foti - Highway 70 (± 13.17 Ac.)
-  Parish Boundary
- Wetlands Type**
-  Freshwater Forested/Shrub Wetland
-  Freshwater Pond
-  Riverine
- Existing Roadway**
-  Highway
-  Streams



SITE NAME: Foti - Highway 70

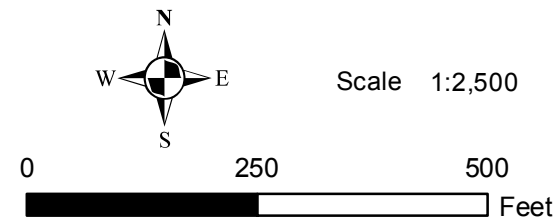
Drawn By: CDS

Checked By: GJB

Date: 12/15/2017

General Notes:
 1. The information presented herein was obtained from various resources and should be considered preliminary.
 2. No attempt has been made by Duplantis Design Group, PC to verify site boundary, title, actual legal ownership, deed restrictions, servitudes, easements, or other burdens on the property.

References:
 1. 2017 Aerial imagery from Ascension Parish Assessors website
 2. Site boundary from Riverlands Surveying Company
 3. Transportation data from U.S. Census Bureau
 4. Wetlands data from National Wetlands Inventory




8352 Bluebonnet Blvd.
 Baton Rouge, LA 70810
 Phone: 225-751-4490
 www.ddgpc.com

Pictometry Imagery, provided by Ascension Assessor