

Exhibit B.

Benoit LA-26 Site

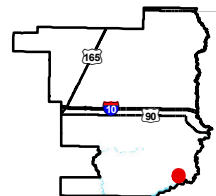
Oblique Aerial Photo Map



Benoit LA-26 Site Oblique Aerial Photo Map

Benoit LA-26 Site
Jefferson Davis Parish, LA

One Acadiana



Jefferson Davis Parish

LEGEND

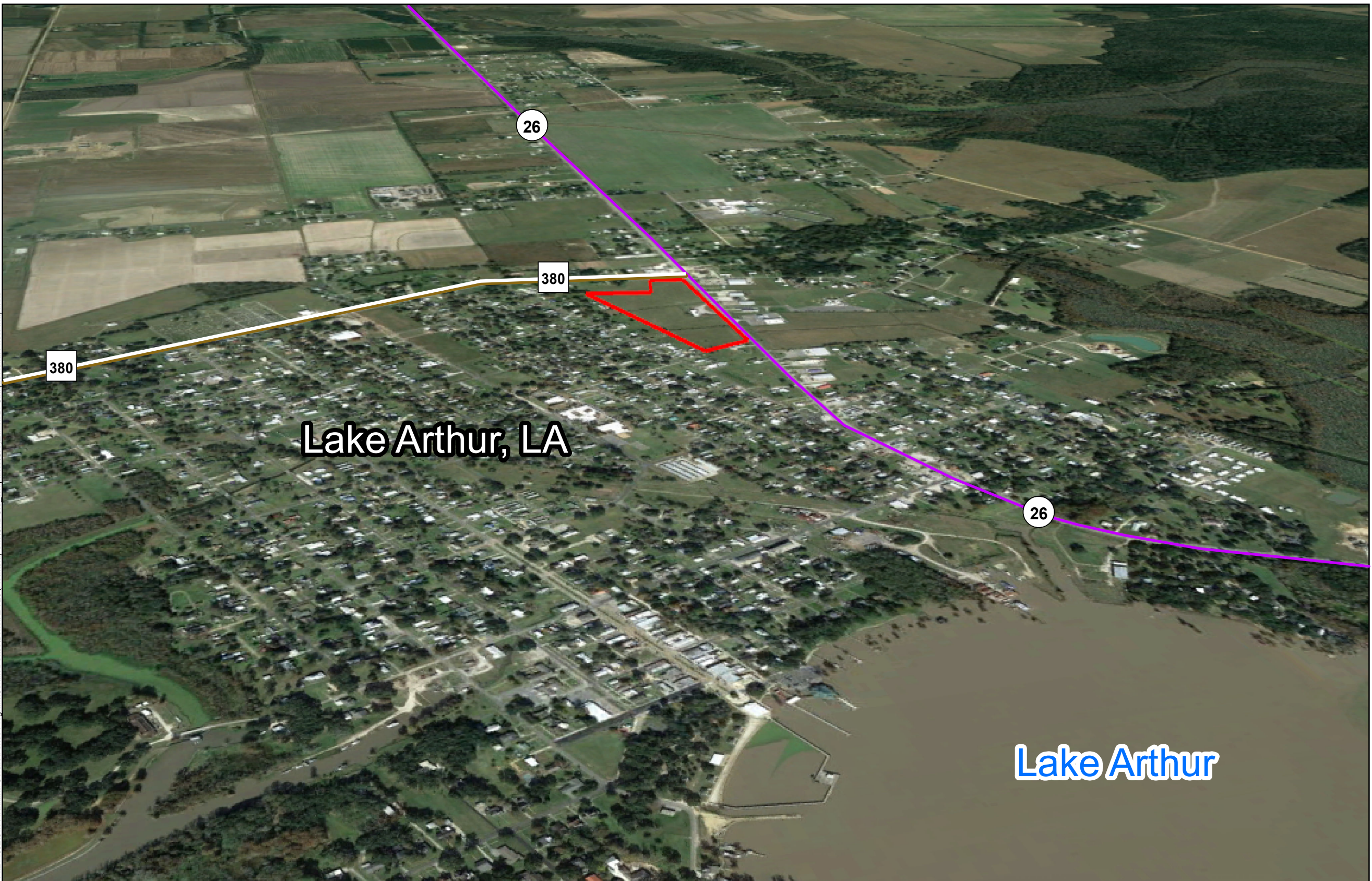
 Site Boundary (18.37± ac.)

Existing Roadway

 Urban State Highway

 Rural State Highway

P:\214002\One Acadiana Certified Sites Program\Certified Sites\Benoit LA-26 (Rowland) Site\CAD\GIS templates\GIS\Exhibit B. Oblique Aerial Photo Map.mxd



Lake Arthur

General Notes:

1. No attempt has been made by CSRS, Inc. to verify site boundary, title, actual legal ownership, deed restrictions, servitudes, easements, or other burdens on the property, other than that furnished by the client or his representative.
2. Transportation data from 2013 TIGER datasets via U.S. Census Bureau at <ftp://ftp2.census.gov/geo/tiger/TIGER2013>.
3. 2015 aerial imagery from Google Earth and may not reflect current ground conditions.



Date:	8/17/2023
Project Number:	214002
Drawn By:	BMS
Checked By:	EEB

CSRS