



Property Highlights:

- Located at the intersection of SWQ of Interstate 12 & Hwy 434
- This large land tract is suitable for development of a distribution hub, industrial park, hospitality, medical, multi-family, etc.
- Surrounding landmarks include the recently completed Ochsner Northshore Medical Complex, Smuckers Distribution Center, Northshore Technical College
- Approximately 13.3 Acres
- Zoned HC3 – Highway Commercial
- Can be subdivided
- Asking Price: \$2,300,000 (\$3.97/sf)

Matt Pittman, CCIM

985.630.7717 | mpittman@beaubox.com

909 Poydras St., Suite 3025, New Orleans, LA. 70112 | 504.525.1410 | www.beaubox.com

Broker of Record, Beau J. Box; Licensed by the Louisiana Real Estate Commission, Mississippi Real Estate Commission, Alabama Real Estate Commission, and Florida Real Estate Commission, USA. This information has been secured from sources we believe to be reliable, but we make no representations or warranties, expressed or implied, as to the accuracy of the information. References to square footage or age are approximate. Buyer must verify the information and bears all risk for any inaccuracies. © Beau Box Commercial Real Estate. December 3, 2019 2:44 PM



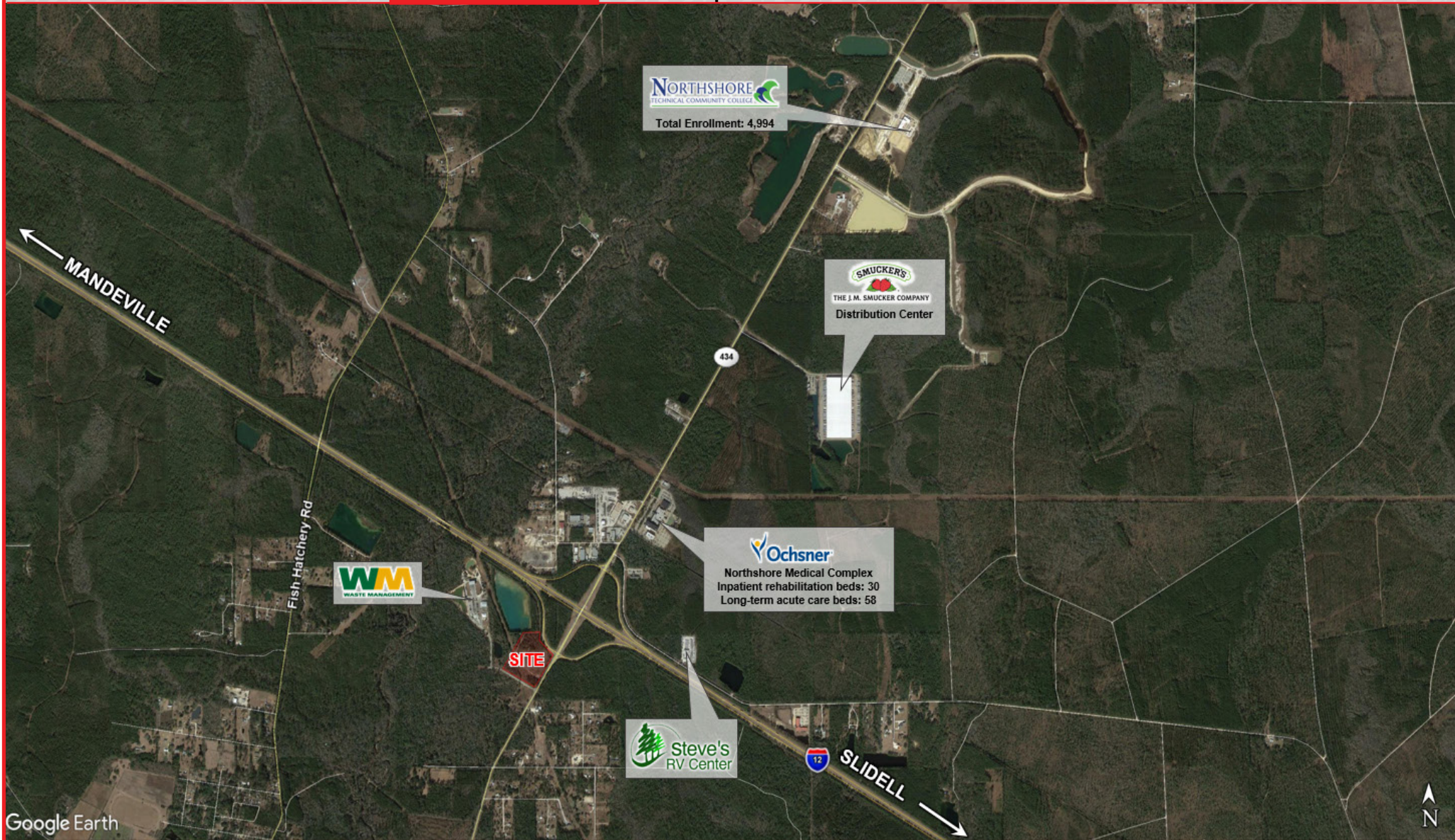
Vacant Land For Sale

SWQ I-12 & Hwy 434, Lacombe, LA

Overview

Location

Conceptual Plan



Google Earth



Matt Pittman, CCIM

985.630.7717 | mpittman@beaibox.com

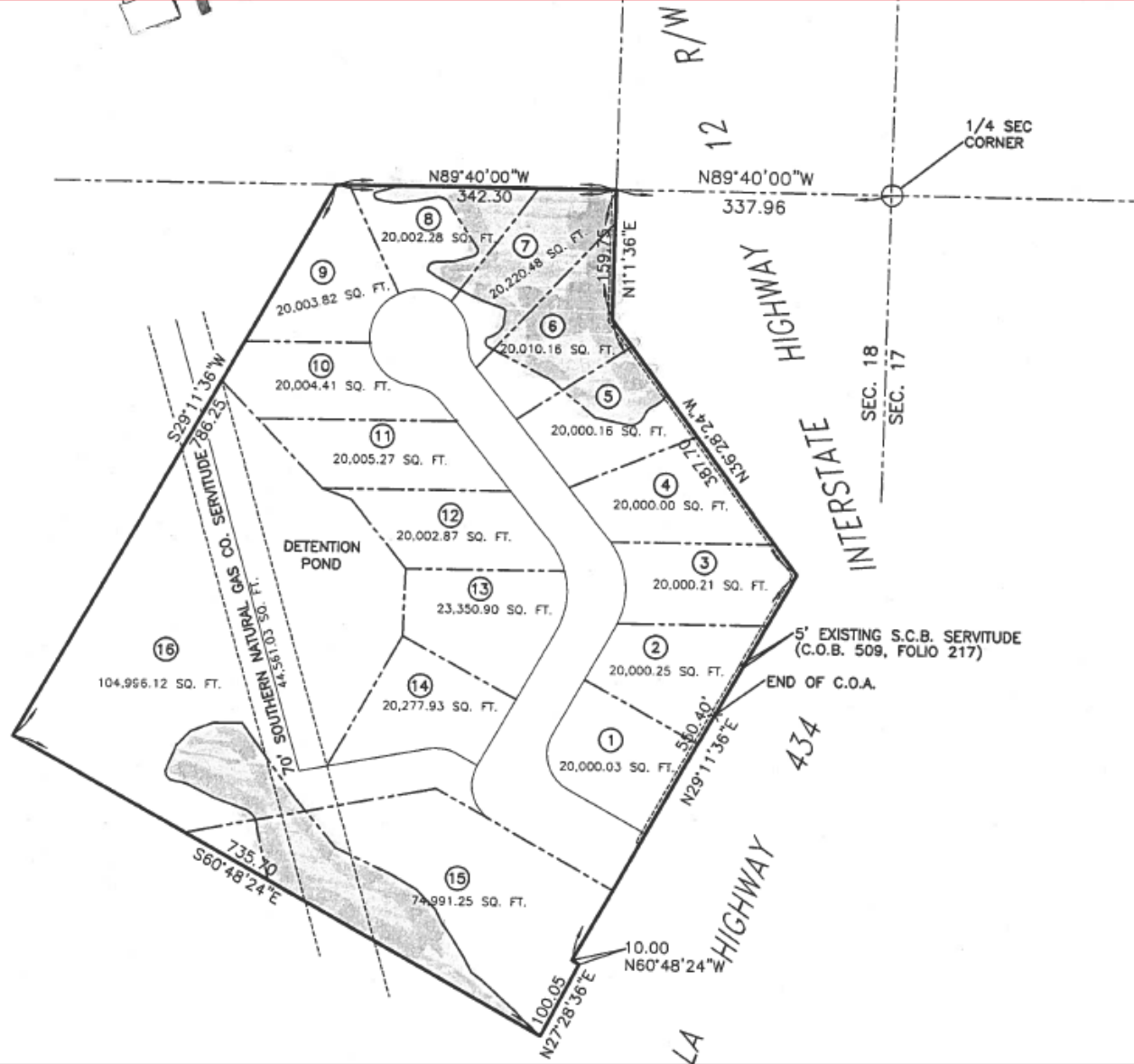
909 Poydras St., Suite 3025, New Orleans, LA. 70112 | 504.525.1410 | www.beaibox.com

Broker of Record, Beau J. Box; Licensed by the Louisiana Real Estate Commission, Mississippi Real Estate Commission, Alabama Real Estate Commission, and Florida Real Estate Commission, USA. This information has been secured from sources we believe to be reliable, but we make no representations or warranties, expressed or implied, as to the accuracy of the information. References to square footage or age are approximate. Buyer must verify the information and bears all risk for any inaccuracies. © Beau Box Commercial Real Estate. December 3, 2019 2:44 PM

Overview

Location

Conceptual Plan



Matt Pittman, CCIM

985.630.7717 | mpittman@beaibox.com

909 Poydras St., Suite 3025, New Orleans, LA. 70112 | 504.525.1410 | www.beaibox.com

Broker of Record, Beau J. Box; Licensed by the Louisiana Real Estate Commission, Mississippi Real Estate Commission, Alabama Real Estate Commission, and Florida Real Estate Commission, USA. This information has been secured from sources we believe to be reliable, but we make no representations or warranties, expressed or implied, as to the accuracy of the information. References to square footage or age are approximate. Buyer must verify the information and bears all risk for any inaccuracies. © Beau Box Commercial Real Estate. December 3, 2019 2:44 PM