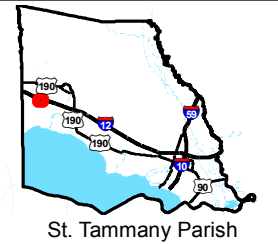


# Exhibit AA. The Lakes at Madison Park Site All Utilities Infrastructure Site Map

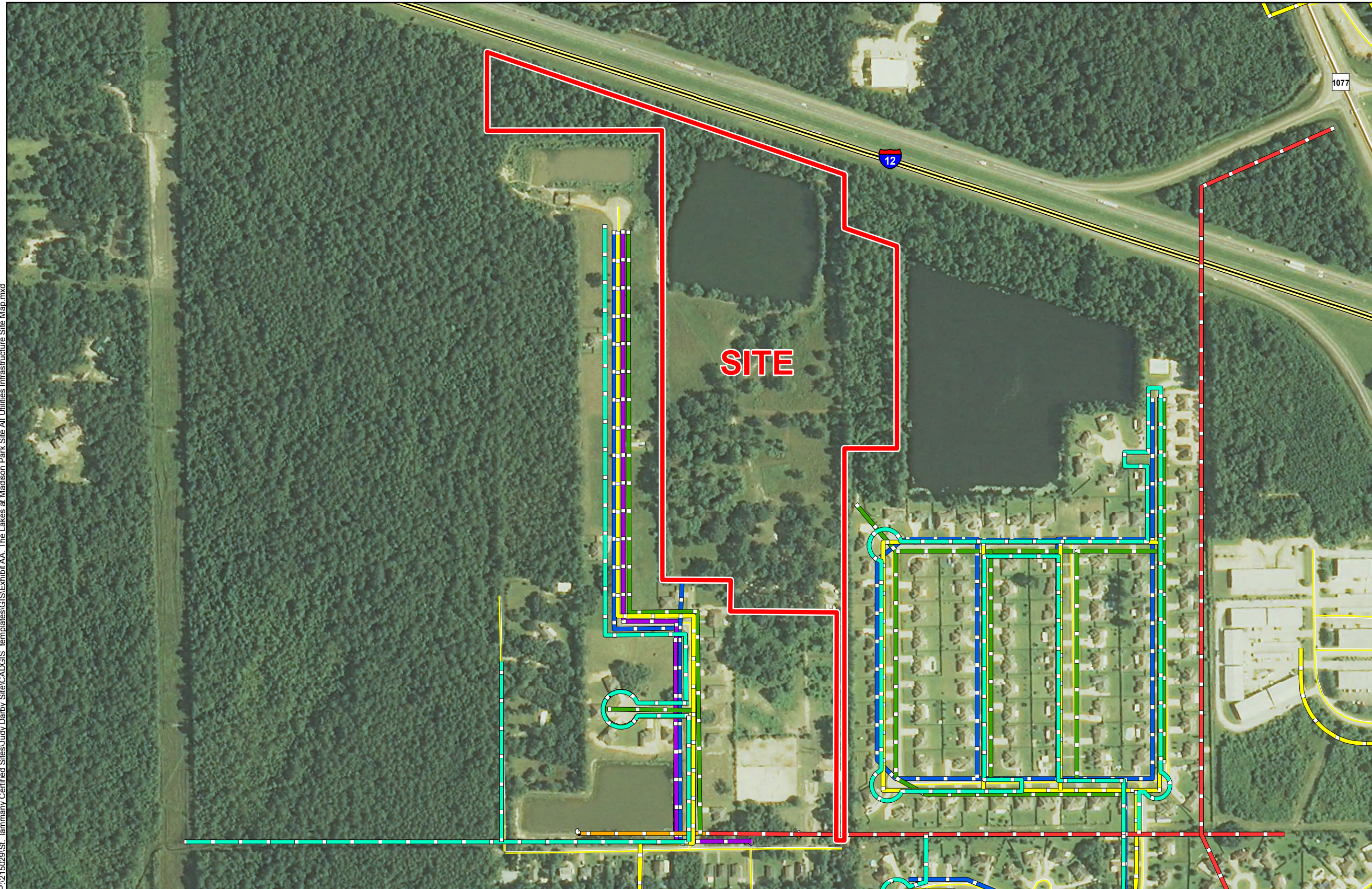
All Existing Utilities  
The Lakes at Madison Park Site  
St. Tammany Parish, LA

Darby Holdings, LLC



**LEGEND**

- Site Boundary (33.548 Acres +/-)
- Existing 2" Natural Gas Distribution
- Existing 8" Water Line
- Existing 8" Sewer Line
- Existing Electric Distribution**
- Single Phase
- Three Phase
- Existing Telecommunications**
- AT&T
- Charter
- Existing Roadway**
- Interstate
- Rural State Highway
- Local Roads



P:\215029\St. Tammany Certified Sites\Judy Darby Site\CAD\GIS templates\GIS\Exhibit AA. The Lakes at Madison Park Site All Utilities Infrastructure Site Map.mxd

**General Notes:**

1. No attempt has been made by CSRS, Inc. to verify site boundary, title, actual legal ownership, deed restrictions, servitudes, easements, or other burdens on the property, other than that furnished by the client or his representative.
2. Transportation data from 2013 TIGER datasets via U.S. Census Bureau at [ftp://ftp2.census.gov/geo/tiger/TIGER2013](http://ftp2.census.gov/geo/tiger/TIGER2013).
3. Utility information from visual inspection and/or the individual utility operators. Exact field location has not been determined by survey. The lines shown are an approximate representation only and may have been offset for depiction purposes.
4. 2013 aerial imagery from USDA-APFO National Agricultural Inventory Project (NAIP) and may not reflect current ground conditions.



Scale 1:4,500  
0 240 480 Feet



Date: 6/23/2015  
Project Number: 215029  
Drawn By: AMB  
Checked By: JAY



6767 Perkins Road Suite 200 Baton Rouge, LA 70808  
Telephone: 225 769-0546 Fax: 225 767-0060  
[www.csrsonline.com](http://www.csrsonline.com)