

CHURCHILL TECHNOLOGY & BUSINESS PARK

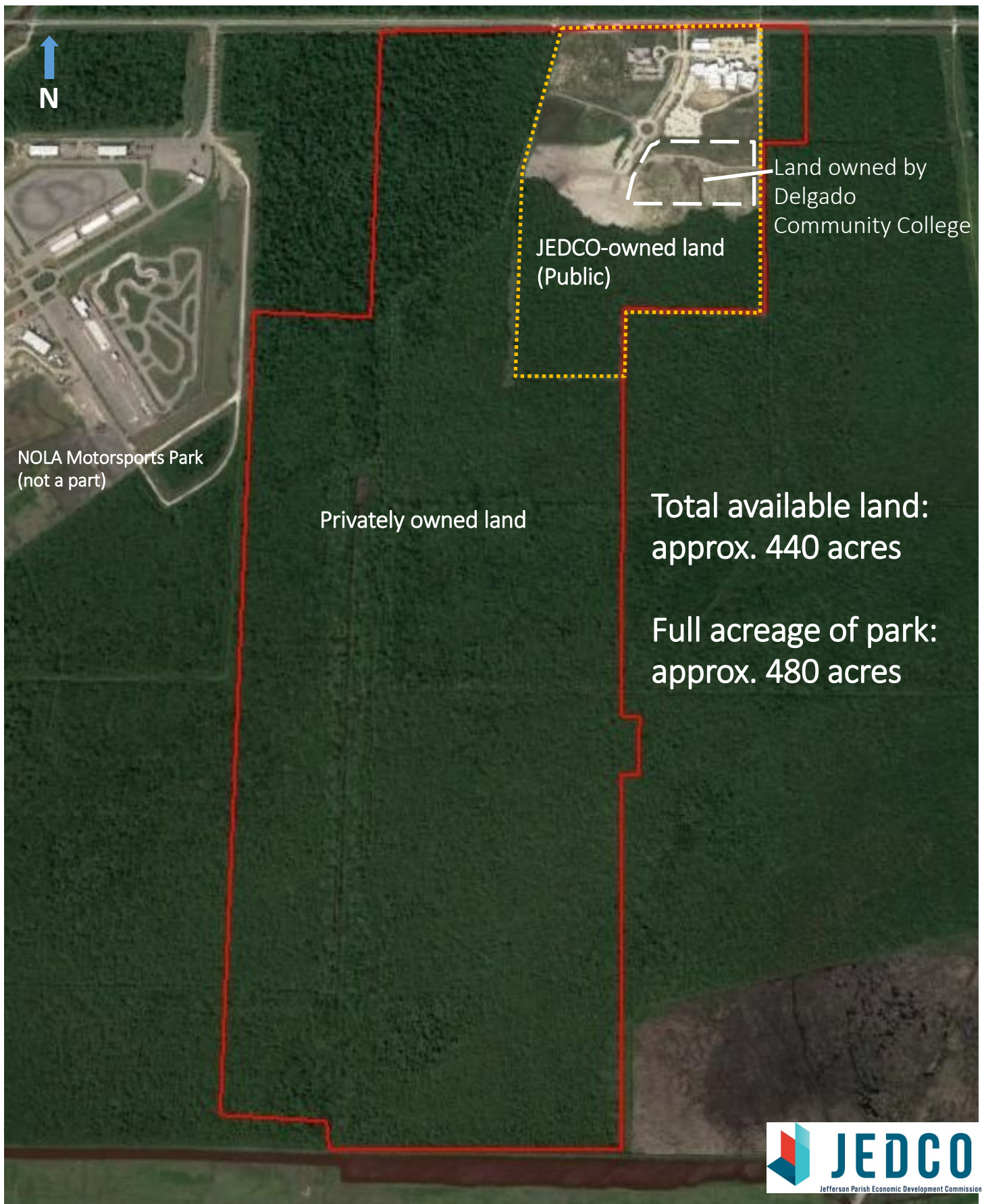
Jefferson Parish, LA

480-acre developable business park in the Fairfield region of Jefferson Parish, 25 minutes from downtown New Orleans and Louis Armstrong International Airport.



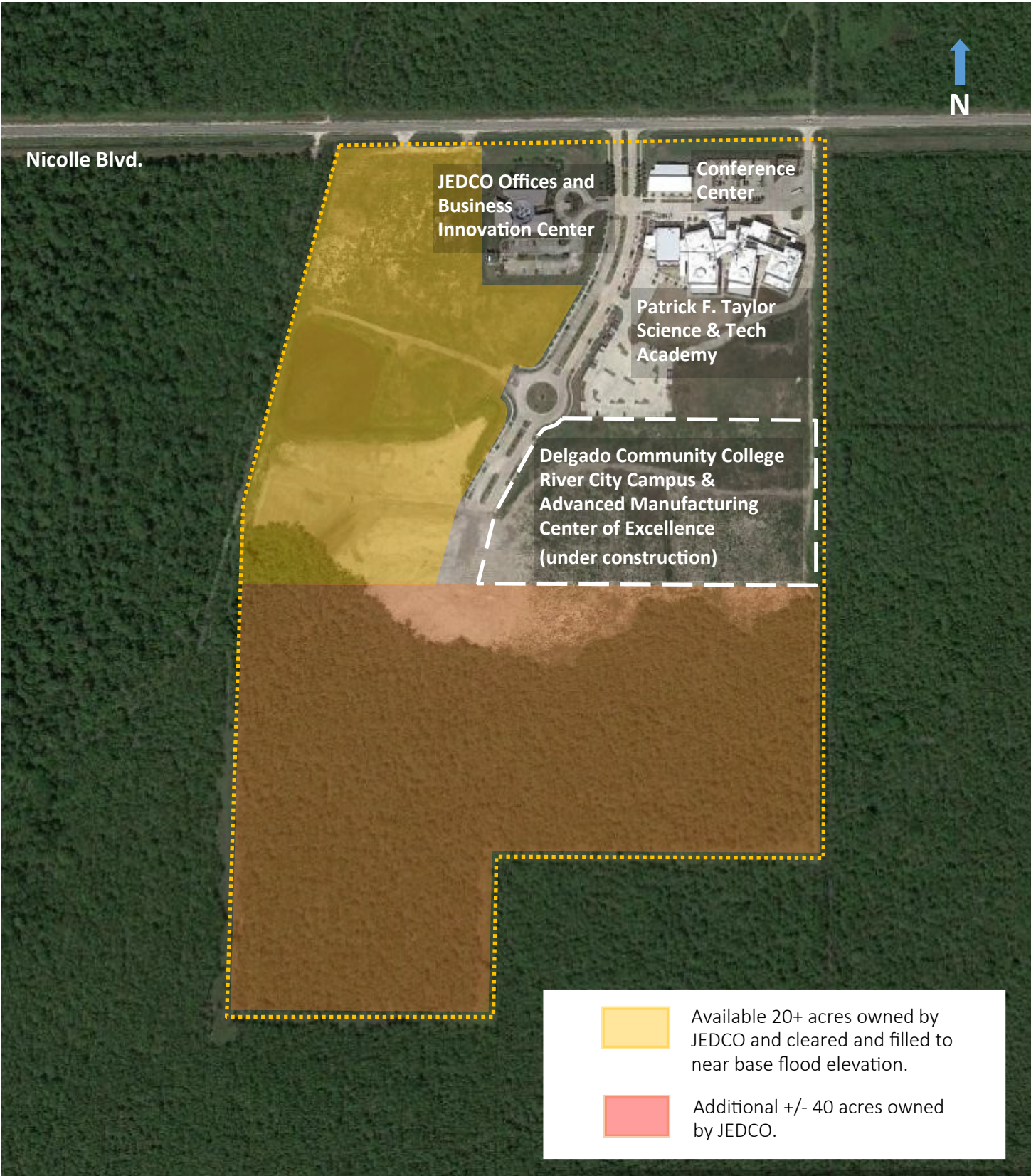
CHURCHILL TECHNOLOGY & BUSINESS PARK

Aerial map of full park (not to scale)



CHURCHILL TECHNOLOGY & BUSINESS PARK

Publicly owned land



CHURCHILL TECHNOLOGY & BUSINESS PARK

Map of Vicinity

Distance to U.S. Hwy 90 (future I-49): 1.7 miles (4 minute drive)

Distance to I-10: 9.6 miles (15-20 minute drive)

Distance to Airport: 12.4 miles (20-25 minute drive)

Distance to New Orleans CBD: 13 miles (20-30 minute drive)

Elmwood Business District: Retail, dining, medical and professional services and residential uses.

Avondale Shipyard Site: 200+acre industrial site featuring 55+ cranes and direct water/rail access.

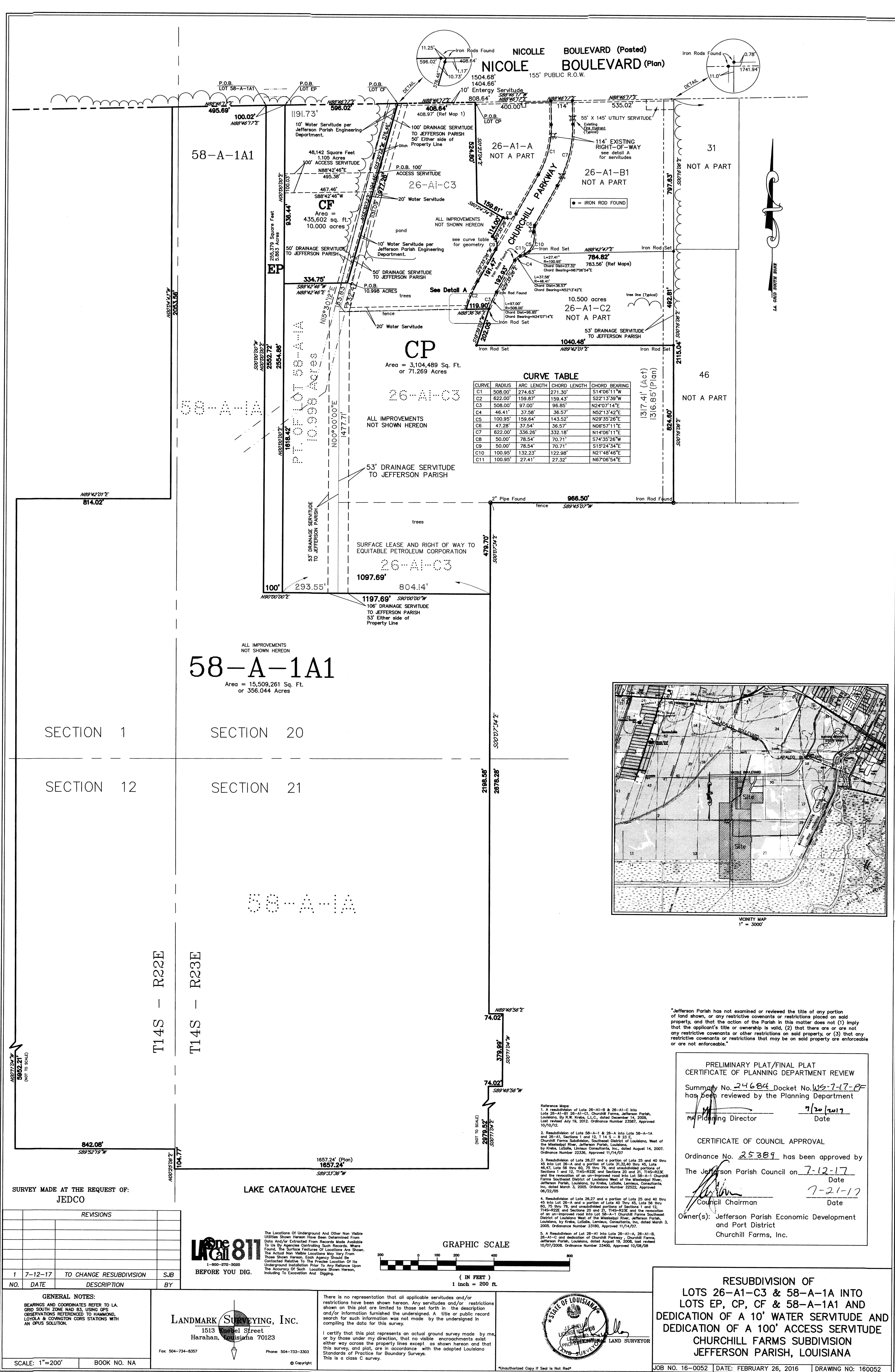
Bayou Segnette State Park: Fishing, camping, swimming, hiking and recreation.

NOLA Motorsports Park: Premier motorsports complex hosting corporate events.

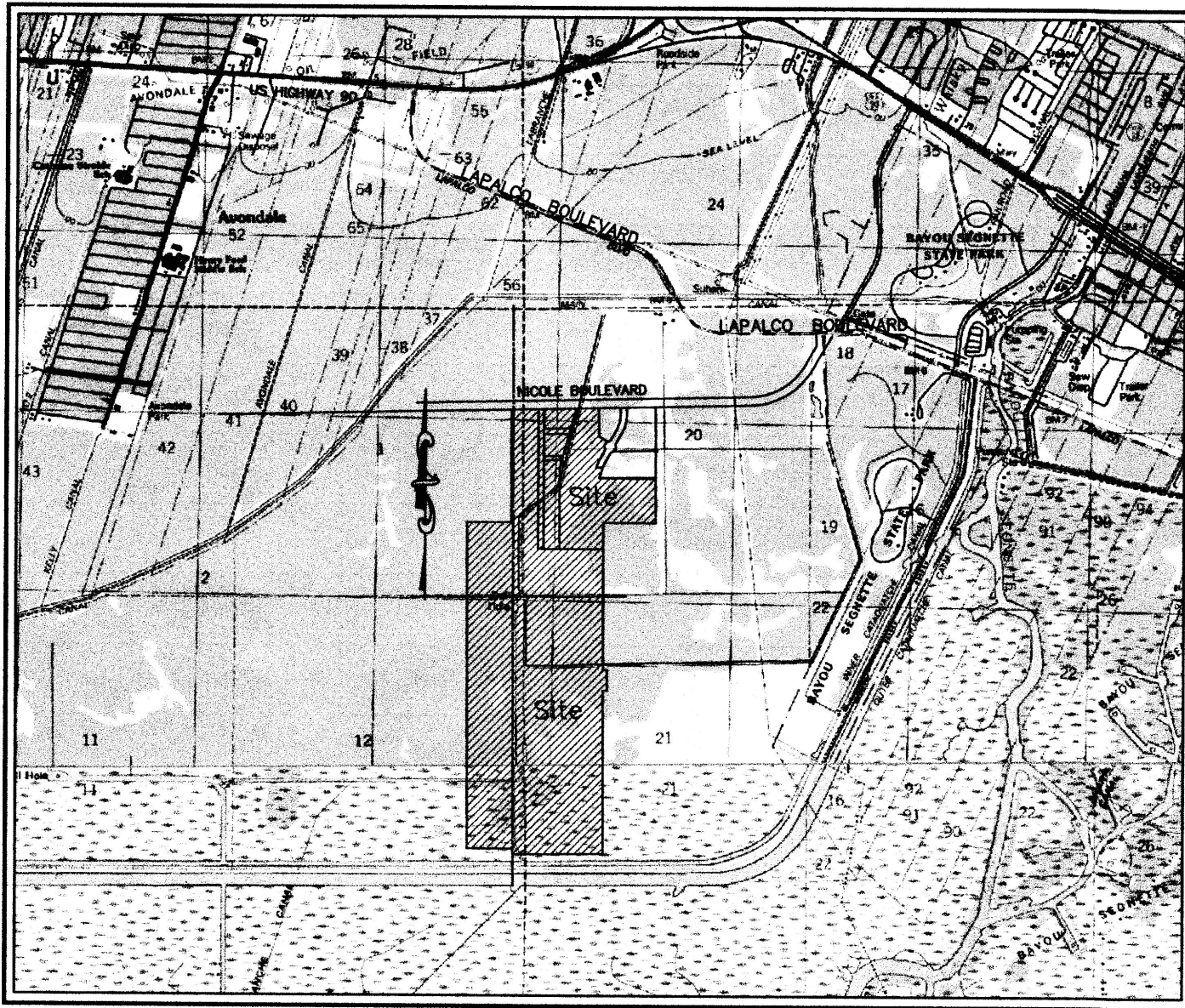
TPC Golf Course: PGA Tour course home to Zurich Classic of New Orleans.

Port of New Orleans: Deep-draft multipurpose port serving one of the world's most crucial and busy port systems. The only seaport in the U.S. served by all six Class I rail lines, 50 ocean carriers, 16 barge lines and 75 truck lines—making it the most multi-modal port in the country.





CURVE TABLE				
CURVE	RADIUS	ARC LENGTH	CHORD LENGTH	CHORD BEARING
C1	508.00'	274.63'	271.30'	S14°08'11"W
C2	622.00'	159.87'	159.43'	S22°13'39"W
C3	508.00'	97.00'	96.85'	N24°07'14"E
C4	46.41'	37.58'	36.57'	N52°13'42"E
C5	100.95'	159.64'	143.52'	N29°35'26"E
C6	47.28'	37.54'	36.57'	N08°57'11"E
C7	622.00'	336.26'	332.18'	N14°06'11"E
C8	50.00'	78.54'	70.71'	S74°35'26"W
C9	50.00'	78.54'	70.71'	S15°24'34"E
C10	100.95'	132.23'	122.98'	N21°48'46"E
C11	100.95'	27.41'	27.32'	N67°06'54"E



"Jefferson Parish has not examined or reviewed the title of any portion of land shown, or any restrictive covenants or restrictions placed on said property, and that the action of the Parish in this matter does not (1) imply that the applicant's title or ownership is valid, (2) that there are or are not any restrictive covenants or other restrictions on said property, or (3) that any restrictive covenants or restrictions that may be on said property are enforceable or are not enforceable."

PRELIMINARY PLAT/FINAL PLAT
CERTIFICATE OF PLANNING DEPARTMENT REVIEW

Summary No. 24684 Docket No. WS-7-17-PF
has been reviewed by the Planning Department

MM Planning Director 7/20/2017
Date

CERTIFICATE OF COUNCIL APPROVAL

Ordinance No. 25389 has been approved by

The Jefferson Parish Council on 7-12-17
Date

7-21-17
Date

Owner(s): Jefferson Parish Economic Development
and Port District
Churchill Farms, Inc.

RESUBDIVISION OF
LOTS 26-A1-C3 & 58-A-1A INTO
LOTS EP, CP, CF & 58-A-1A1 AND
DEDICATION OF A 10' WATER SERVITUDE AND
DEDICATION OF A 100' ACCESS SERVITUDE
CHURCHILL FARMS SUBDIVISION
JEFFERSON PARISH, LOUISIANA