

Exhibit II. Belle Grove Site USACE Hydrographic Survey Overlay and Cross Section Exhibit

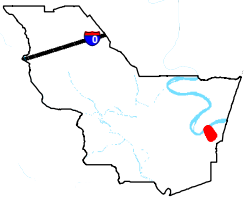
Belle Grove Site USACE Hydrographic Survey Overlay and Cross Section Exhibit

Project:

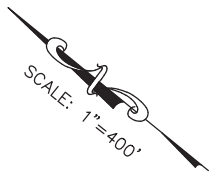
Belle Grove Plantation
Iberville Parish, LA

Client:

BRAC



Iberville Parish



0 400 800

Revisions:

#	Date	Description

Key Plan:

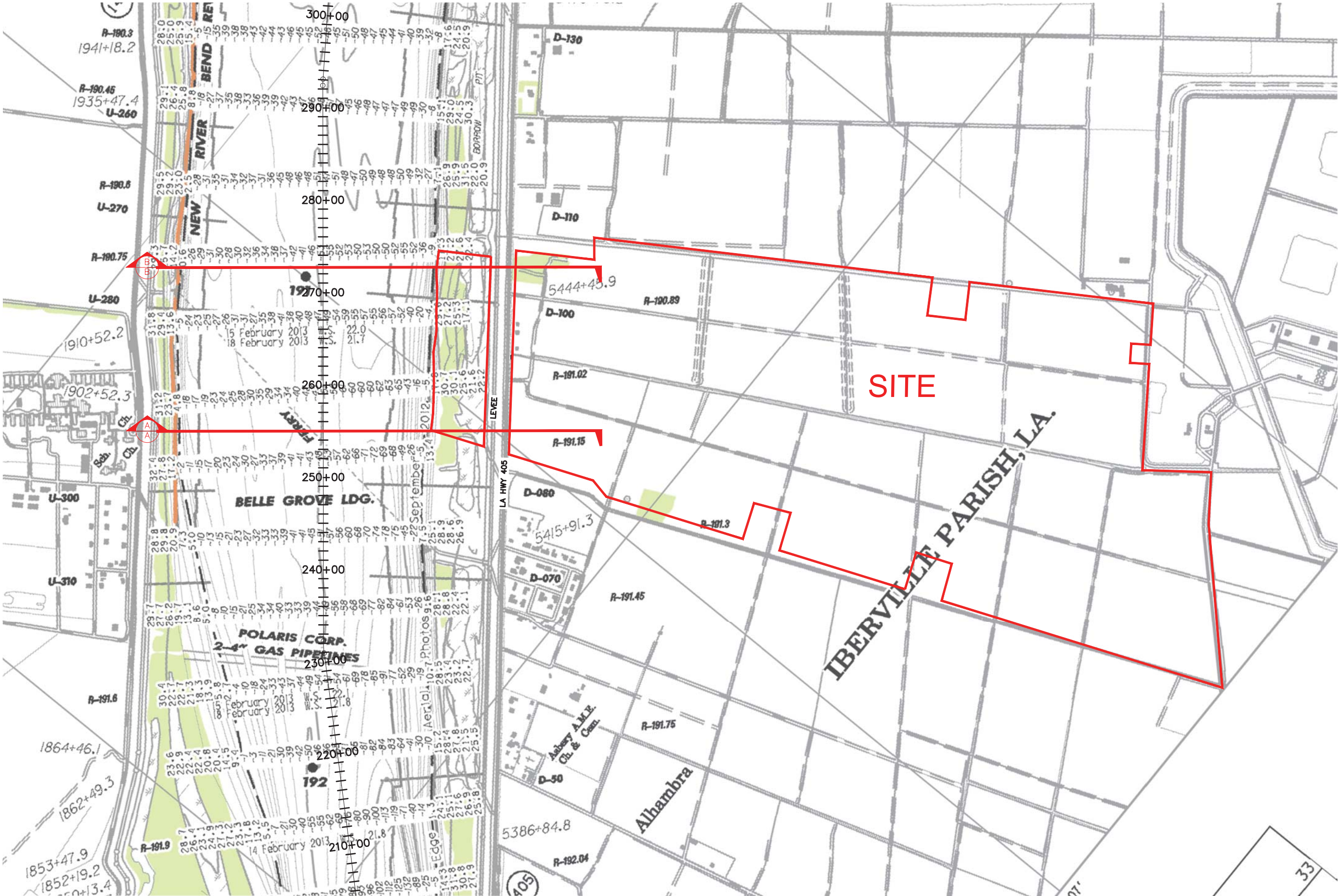
LEGEND

— SITE BOUNDARY
(555.19 AC. ±)

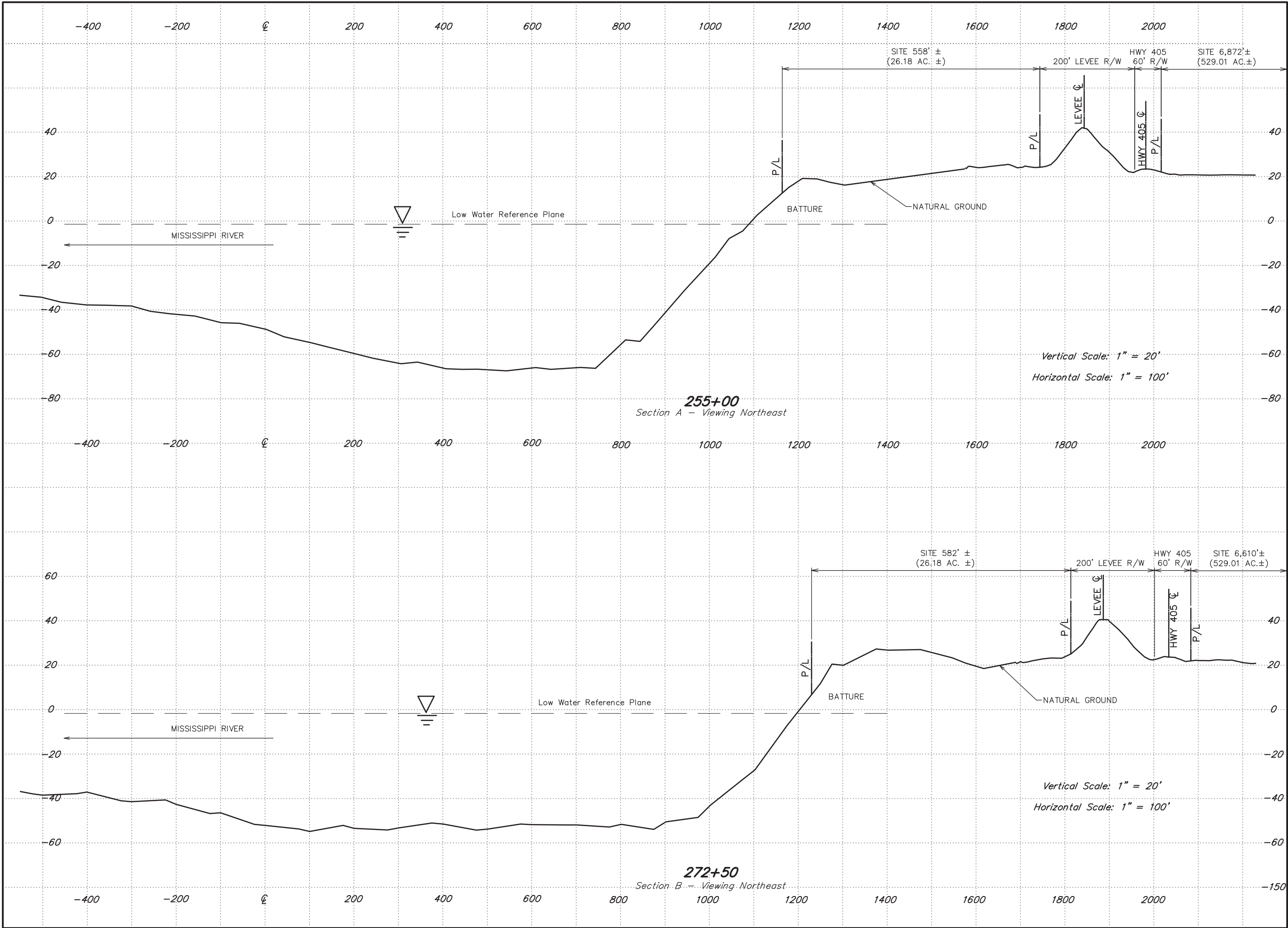
Sheet Title:

Hydrographic Survey
Overlay Exhibit

Date:	November 2016
Project Number:	212161
Drawn By:	JAY
Checked By:	TMG
Sheet:	



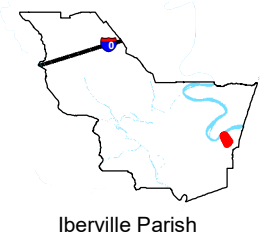
P:\212161\Sites Under Contract\020 - Belle Grove Plantation\CAD\IS_templates\CAD\ Cross Section Map.dwg Apr 24, 2017 - 10:48am



Project:

**Belle Grove Plantation
Iberville Parish, LA**

Client:



Revisions:

#	Date	Description

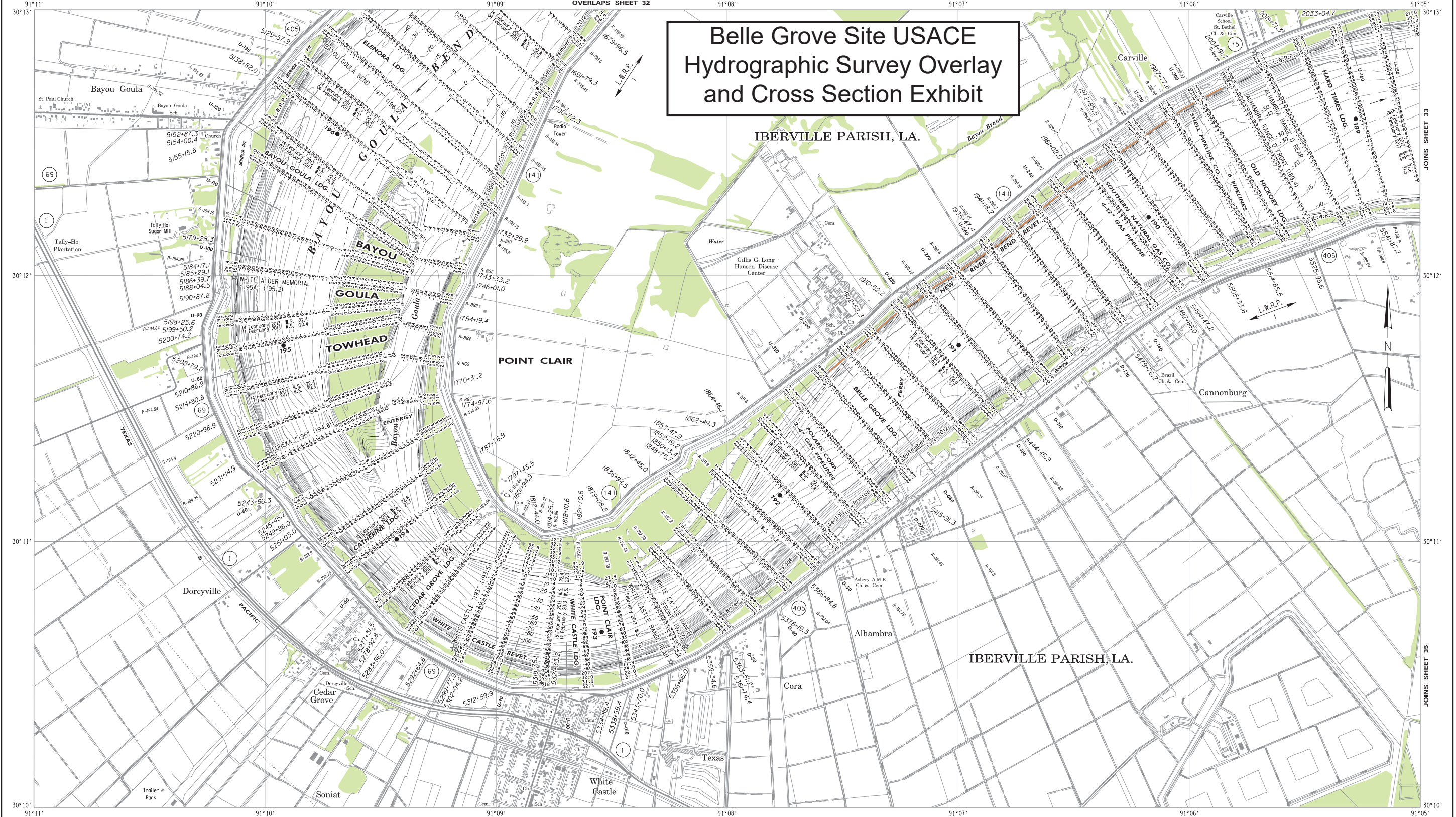
Key Plan:

Sheet Title:

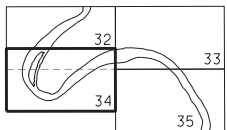
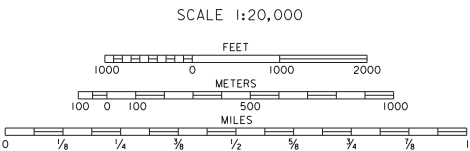
**Cross Section
Exhibit**

Date:	November 2016
Project Number:	212161
Drawn By:	JAY
Checked By:	TMG
Sheet:	

Belle Grove Site USACE
Hydrographic Survey Overlay
and Cross Section Exhibit



All elevations are expressed in feet and refer to North American Vertical Datum of 1988.
Contours below Low Water Reference Plane are expressed in feet at 5 and 10 ft. intervals.
Contours above Low Water Reference Plane are expressed in feet at 5 ft. intervals.
Planimetry from aerial photographs flown February 2002.
Distances on Mississippi River above Head of Passes are shown at 1 mile intervals, 1962 survey.
Projection Lambert Conformal Conic
Horizontal Datum North American Datum 1983 (NAD 83)
Ellipsoid GRS 80
L.W.R.P. - Low Water Reference Plane.



INDEX TO ADJOINING SHEETS

MISSISSIPPI RIVER
HYDROGRAPHIC SURVEY 2013
BLACK HAWK, LA TO HEAD OF PASSES, LA
ALSO SOUTHWEST, SOUTH, AND PASS A LOUTRE.
IN 86 SHEETS
U.S. ARMY ENGINEER DISTRICT, NEW ORLEANS,
CORPS OF ENGINEERS