

Exhibit O.

Acadiana Regional Airport P5 Site

Electrical Transmission

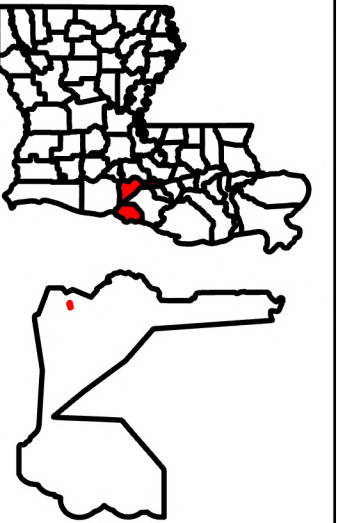
Infrastructure Map








Acadiana Regional Airport P5 Site Electrical Transmission Infrastructure Map

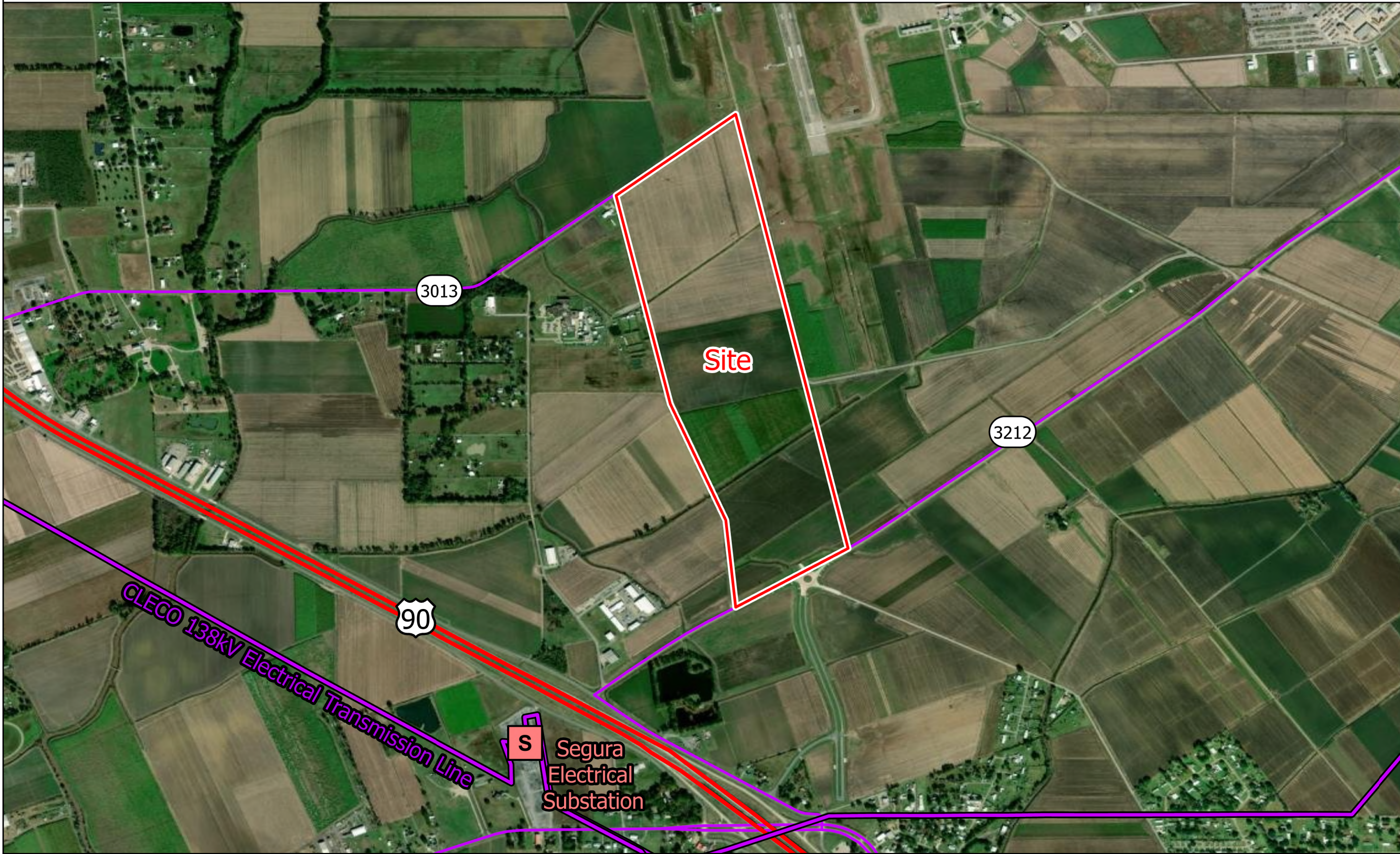
Site Exhibit for
Acadiana Regional Airport P5
Site
Iberia Parish, LA

One Acadiana



Legend

-  Site Boundary (±178.95 Ac.)
-  CLECO 138 kV Electrical Transmission Line
-  Electrical Substation
- Major Roads**
-  US Highway
-  State Highway



P:\214002\One Acadiana Certified Sites Program\Certified Sites\Acadiana Regional

- General Notes:**
1. The information presented herein is for planning purposes only. Further detailed due diligence MUST be completed prior to making decisions regarding the site.
 2. No attempt has been made by CSRS, Inc. to verify site boundary, title, actual legal ownership, deed restrictions, servitudes, easements, or other burdens on the property, other than that furnished by the client or his representative.
 3. Transportation data from 2023 TIGER datasets via U.S. Census Bureau at <https://www.census.gov/geographies/mapping-files/time-series/geo/tiger-line-file.html>.
 4. Aerial imagery is compiled from multiple different sources to create one cohesive image and may not reflect current ground condition.
 5. Utility information from visual inspection and/or the individual utility operators. Exact field location has not been determined by survey.
 6. Utility data was derived and digitized from information provided by CLECO




Date: 12/29/2025
Project Number: 214002
Drawn By: CFO
Checked By: EEB



a Westwood company