

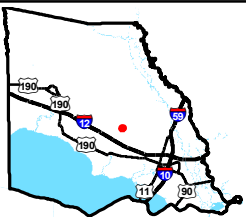
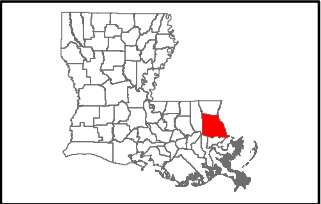
Exhibit N. Tamanend Business Park West Site Local Product Pipelines Map



Tamanend Business Park West Site Local Product Pipelines Map

Local Product Pipelines
Tamanend Business Park West Site
St. Tammany Parish, LA

St. Tammany EDF



St. Tammany Parish

LEGEND

Site Boundary (48.34 Ac. ±)

National Pipeline Mapping System Pipelines

GASOLINE REGULAR

MULTI-PRODUCTS

NATURAL GAS

NATURAL GAS LIQUID

Existing Roadway

Interstate

Rural State Highway



Date: 6/3/2016

Project Number: 214094

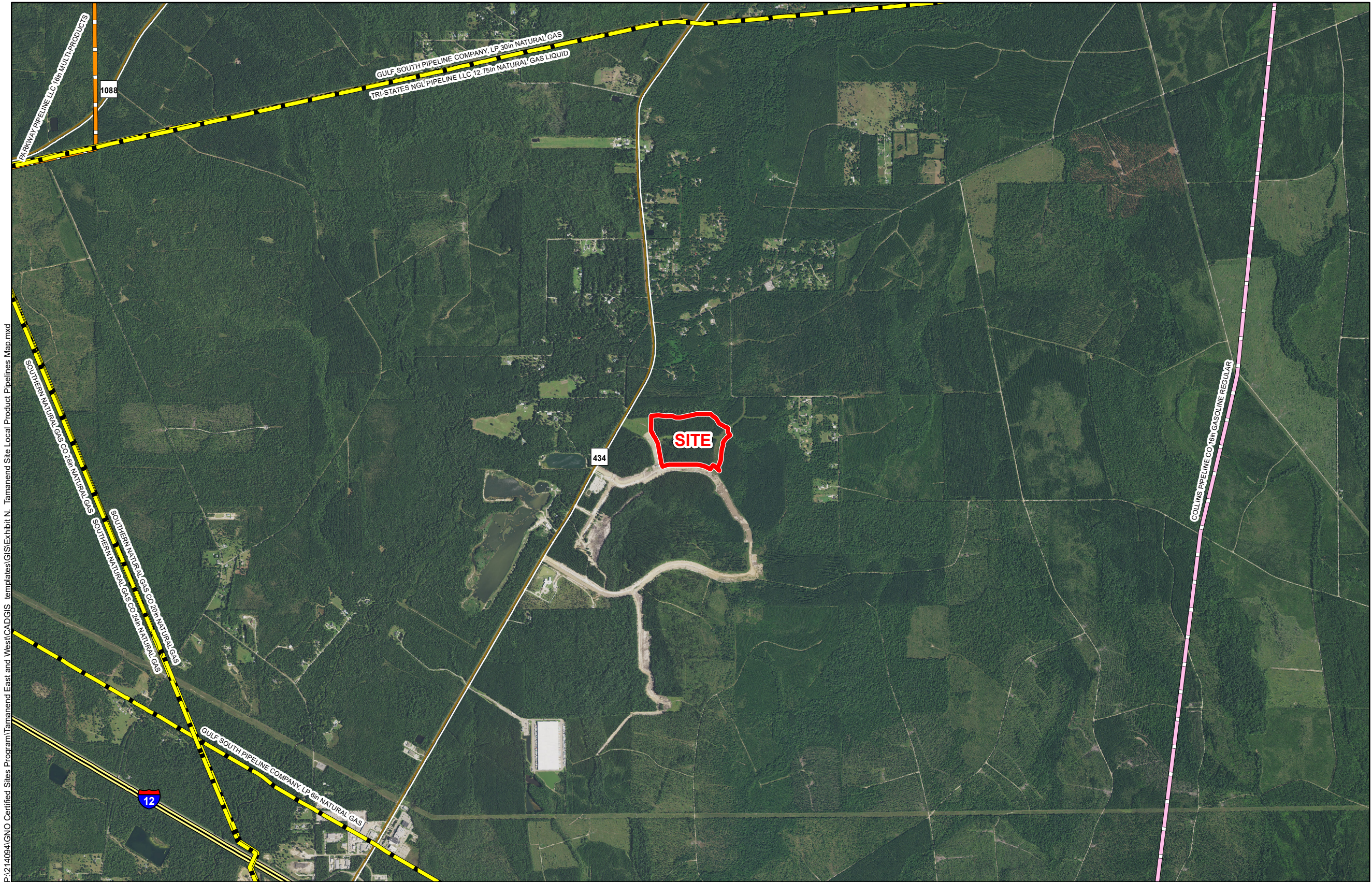
Drawn By: TMK

Checked By: JAY



6767 Perkins Road Suite 200 Baton Rouge, LA 70808
Telephone: 225 769-0546 Fax: 225 767-0060
www.csrsonline.com

P:\214094\GNO Certified Sites Program\Tamanend East and West\CAD\GIS templates\GIS\Exhibit N. Tamanend Site Local Product Pipelines Map.mxd



General Notes:

1. No attempt has been made by CSRS, Inc. to verify site boundary, title, actual legal ownership, deed restrictions, servitudes, easements, or other burdens on the property, other than that furnished by the client or his representative.
2. Transportation data from 2013 TIGER datasets via U.S. Census Bureau at <ftp://ftp2.census.gov/geo/tiger/TIGER2013>.
3. Pipeline information from the National Pipeline Mapping System and is current as of 02/2016. Product types in individual lines can vary and products represented here are current as of the publication of this exhibit, but may change depending on the demands and requirements of each system. Exact field location has not been determined by survey. The lines shown are an approximate representation only and may have been offset for depiction purposes.
4. 2015 aerial imagery from USDA-APFO National Agricultural Inventory Project (NAIP) and may not reflect current ground conditions.

