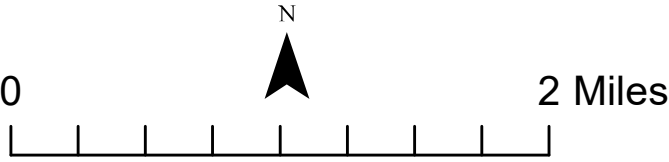
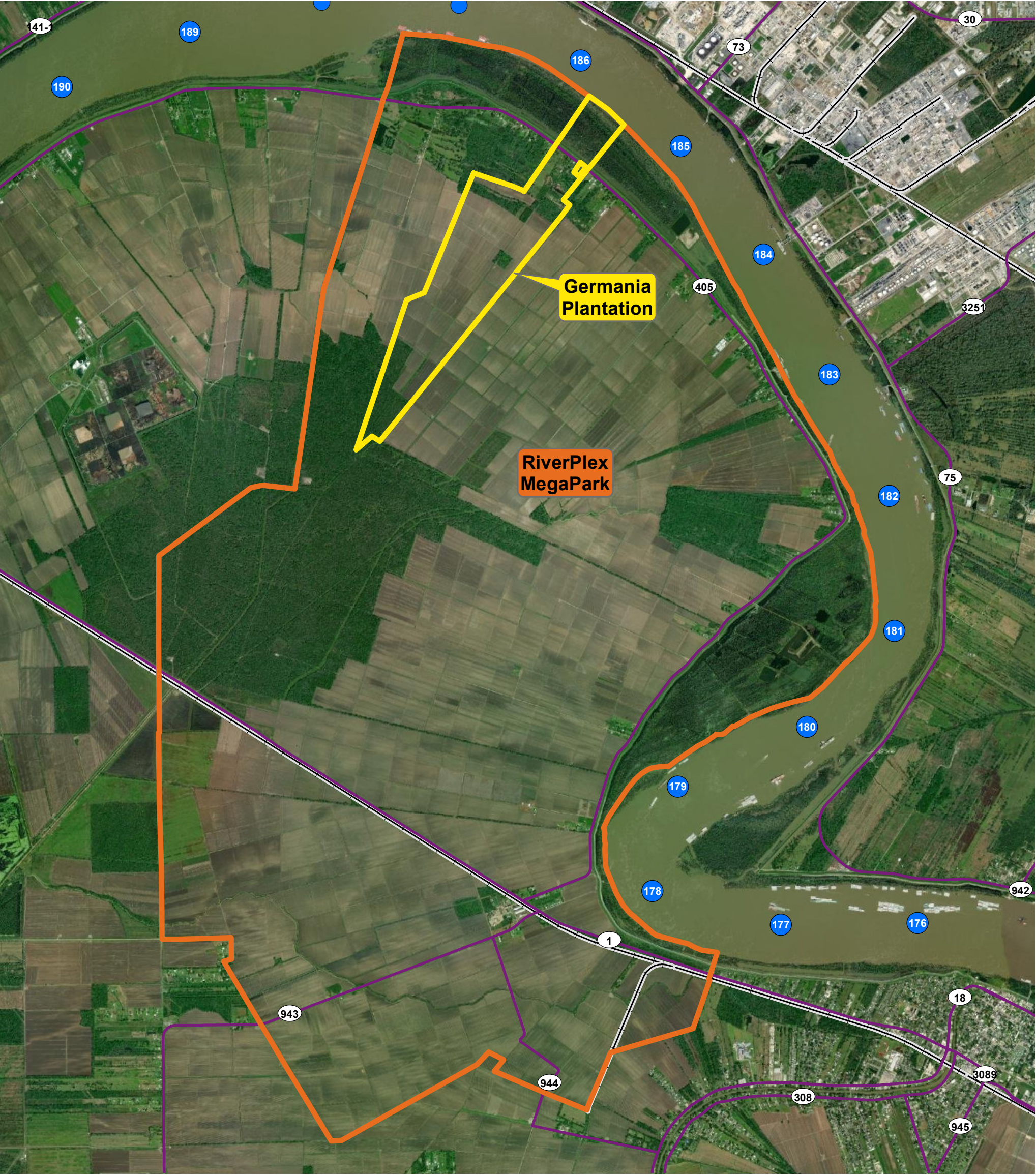
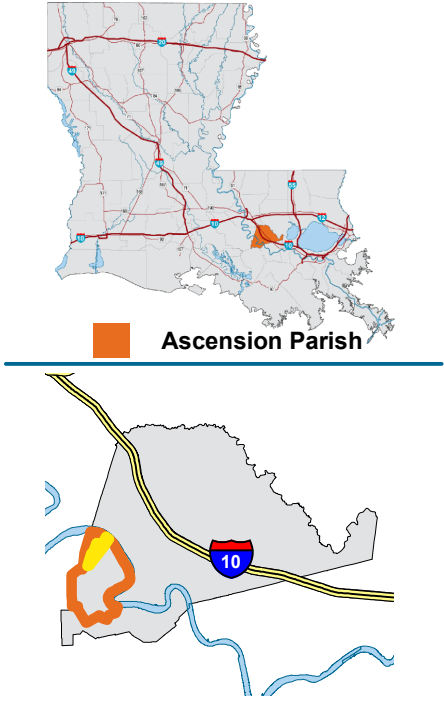


Site Location Map



Source:
-Aerial Photo: DigitalGlobe
-Base Map: ESRI, LDOT, LED
-Locations and Boundaries are approximated
GIS Analyst: MPH 12/05/2022
Additional Information Available Upon Request

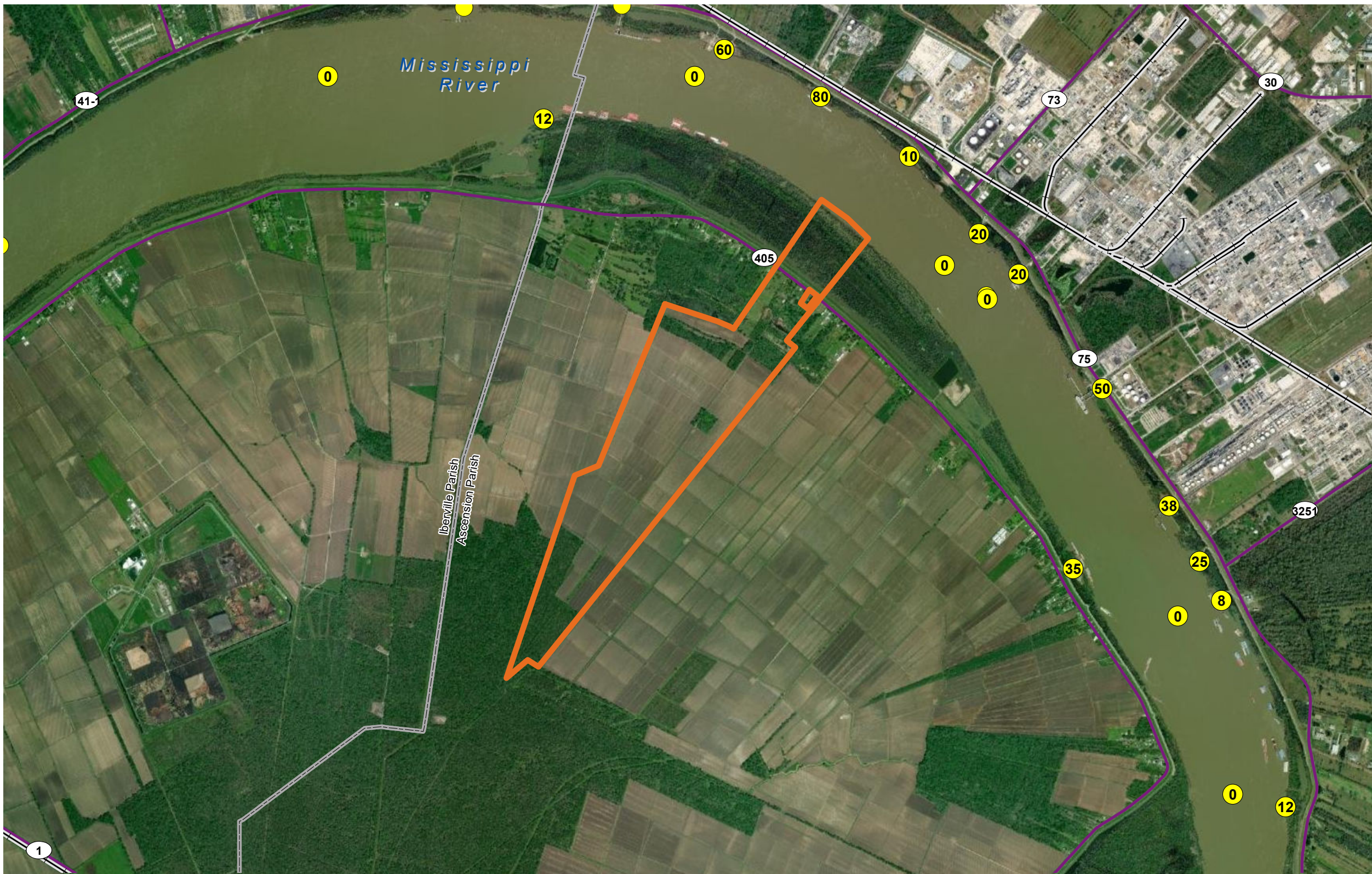
- Germania Plantation
- ±17,000 Acre RiverPlex MegaPark Boundary
- Railroad
- LA State Highway
- River Mile Marker



Mapping conducted by:
Louisiana Economic Development
Business Intelligence
617 N Third St
Baton Rouge, Louisiana 70802
(225) 342-1135
OpportunityLouisiana.com

Germania Plantation - ±775 Acres - Ascension Parish

Selected Infrastructure Map



- Potential Site
- Railroad
- LA State Highway
- Dock Facilities - Depth

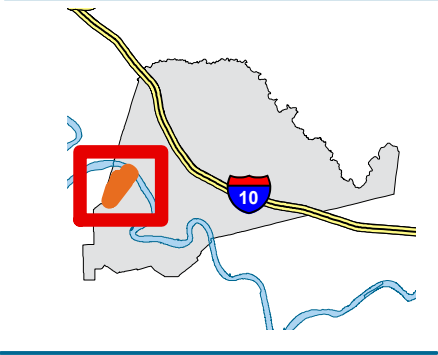
Source:
-Aerial Photo: DigitalGlobe
-Base Map: ESRI, LDOT, LED
-Locations and Boundaries are approximated
GIS Analyst: MPH 12/05/2022
Additional Information Available Upon Request



Mapping conducted by:
Louisiana Economic Development
Business Intelligence
617 N Third St
Baton Rouge, Louisiana 70802
(225) 342-3725
OpportunityLouisiana.com

Germania Plantation - ±775 Acres - Ascension Parish

Wetlands Map



- Potential Site
- Railroad
- LA State Highway
- 2019 LA Wetlands**
- Freshwater Emergent Wetland
- Freshwater Forested/Shrub Wetland
- Freshwater Pond
- Riverine

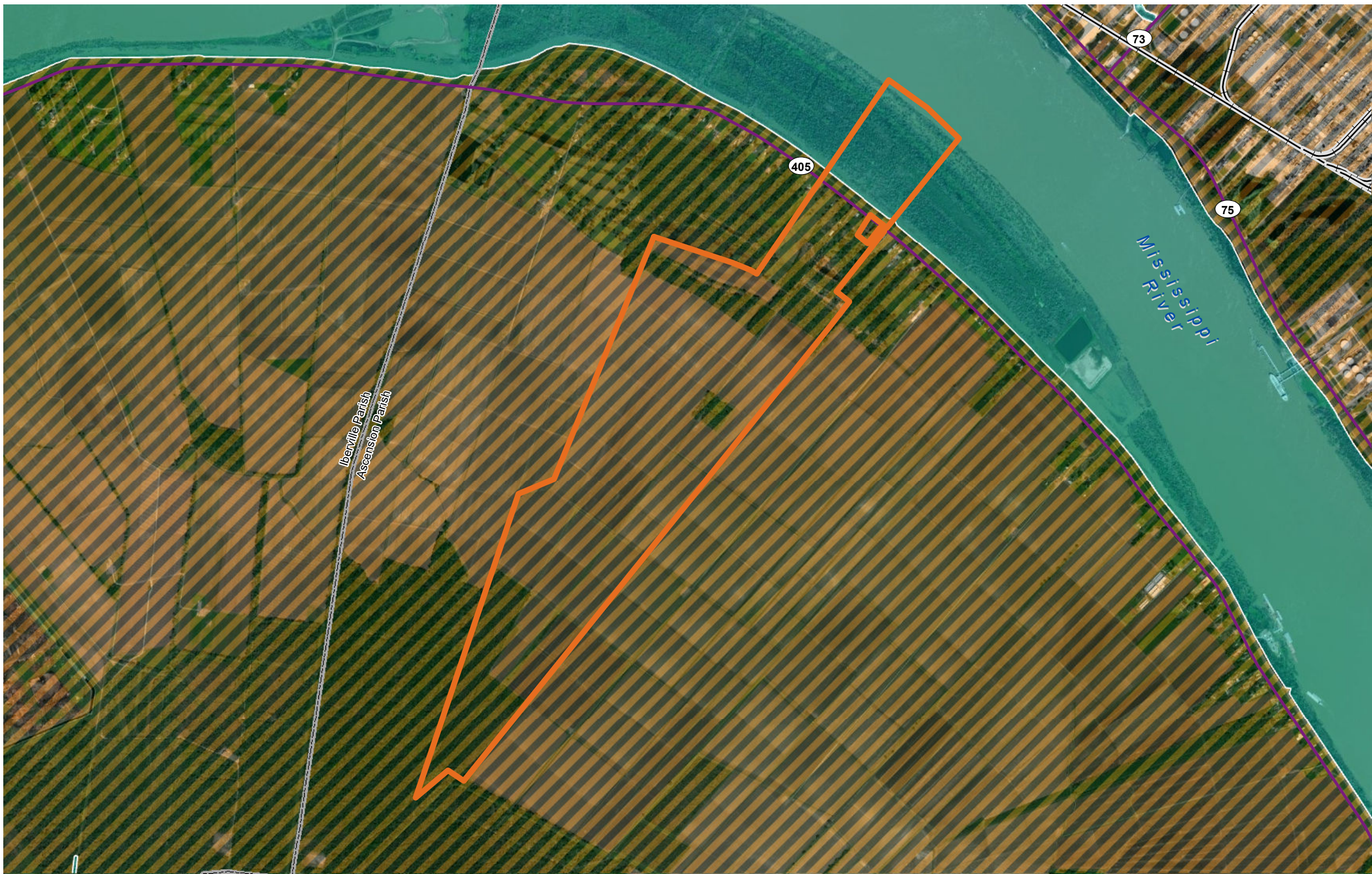
Source:
-Aerial Photo: DigitalGlobe
-Base Map: ESRI, LDOT, LED
-Wetland Data: US Fish & Wildlife
-Locations and Boundaries are approximated
GIS Analyst: MPH 12/05/2022
Additional Information Available Upon Request



Mapping conducted by:
Louisiana Economic Development
Business Intelligence
617 N Third St
Baton Rouge, Louisiana 70802
(225) 342-3725
OpportunityLouisiana.com

Germania Plantation - ±775 Acres - Ascension Parish

FEMA Flood Hazard Map



Source:
-Aerial Photo: DigitalGlobe
-Base Map: ESRI, LDOT, LED
-Flood Data: FEMA
-Locations and Boundaries are approximated
GIS Analyst: MPH 12/05/2022
Additional Information Available Upon Request

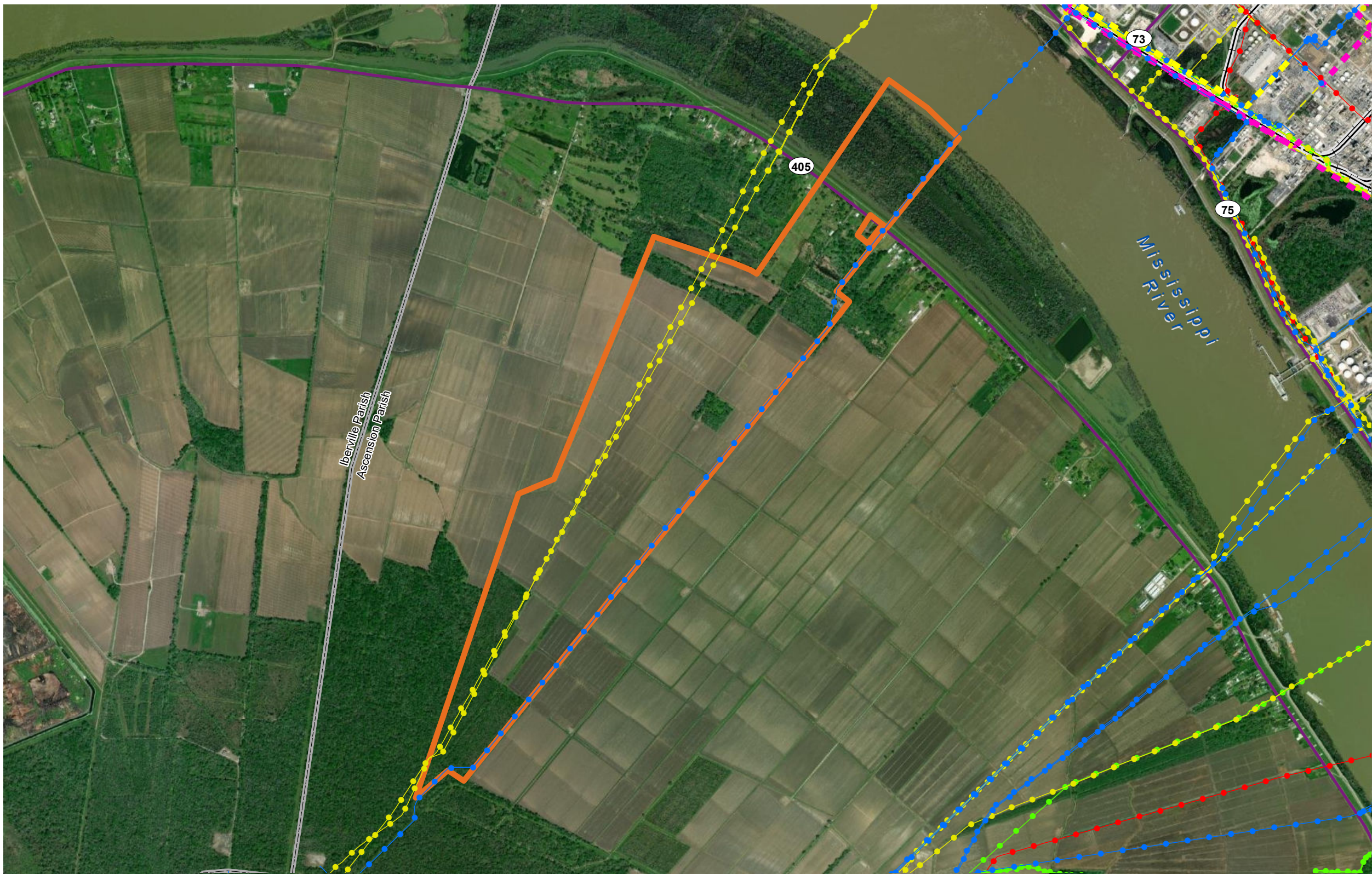


Mapping conducted by:
Louisiana Economic Development
Business Intelligence
617 N Third St
Baton Rouge, Louisiana 70802
(225) 342-3725
OpportunityLouisiana.com

- Potential Site
- Railroad
- LA State Highway
- Flood Hazard Zones
 - 1% Annual Chance Flood Hazard
 - Regulatory Floodway
 - Special Floodway
 - Area of Undetermined Flood Hazard
 - 0.2% Annual Chance Flood Hazard
 - Future Conditions 1% Annual Chance Flood Hazard
 - Area with Reduced Risk Due to Levee

Germania Plantation - ±775 Acres - Ascension Parish

Known Pipeline Map



- Potential Site
- Railroad
- LA State Highway
- NPMS Pipelines
- Ammonia
- NG
- Hydrogen
- Other Highly Volatile Liquids
- Liquified Petroleum Gas
- Other Products
- All Other Pipelines

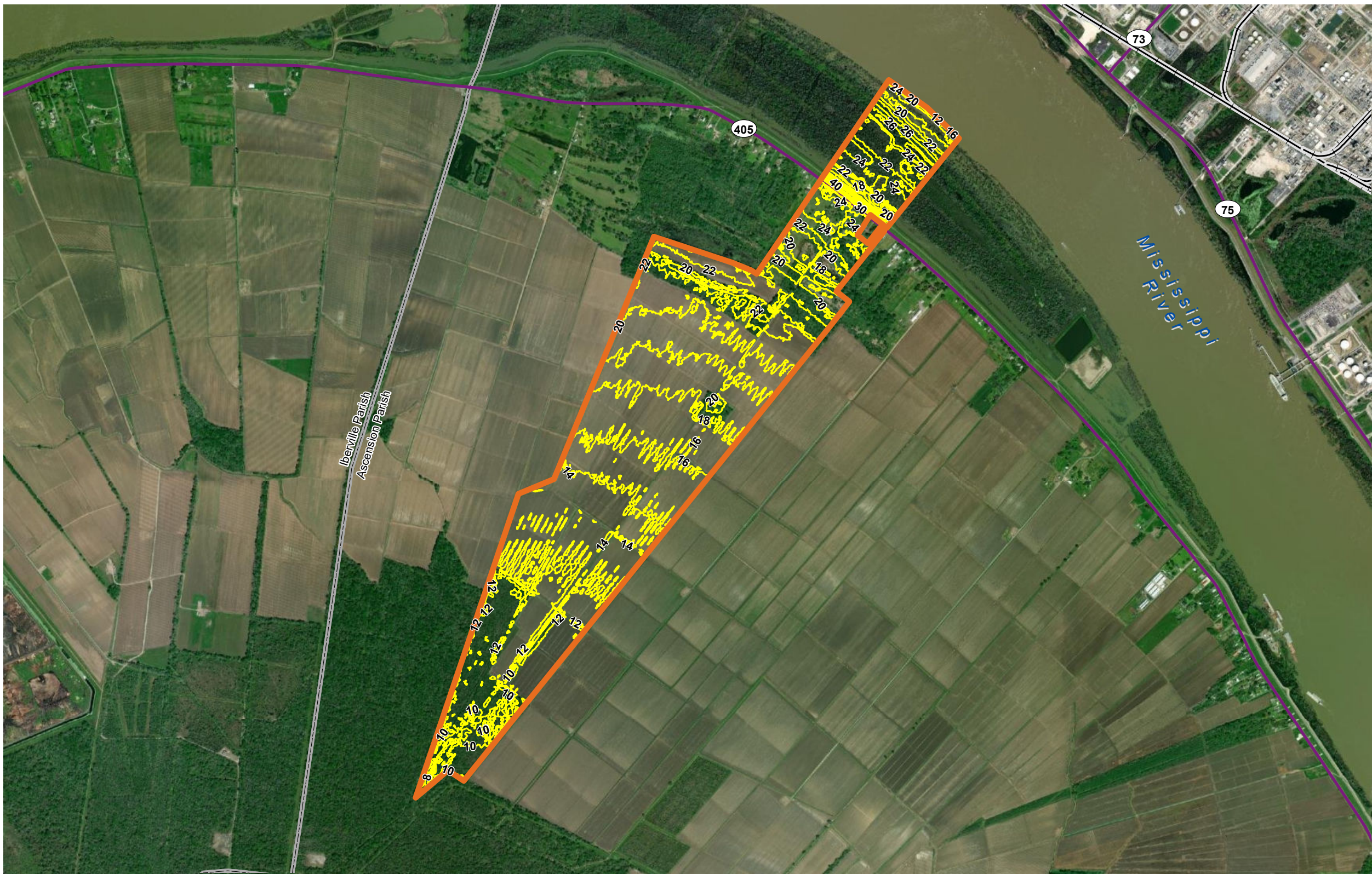
Source:
-Aerial Photo: DigitalGlobe
-Base Map: ESRI, LDOT, LED
-Pipeline Data: NPMS
-Locations and Boundaries are approximated
GIS Analyst: MPH 12/05/2022
Additional Information Available Upon Request



Mapping conducted by:
Louisiana Economic Development
Business Intelligence
617 N Third St
Baton Rouge, Louisiana 70802
(225) 342-3725
OpportunityLouisiana.com

Germania Plantation - ±775 Acres - Ascension Parish

Site Elevation Map



- Potential Site
- Lidar Elevation, Feet
- Railroad
- LA State Highway

Source:
-Aerial Photo: DigitalGlobe
-Base Map: ESRI, LDOT, LED
-LiDAR Elevations: USACE
-Locations and Boundaries are approximated
GIS Analyst: MPH 12/05/2022
Additional Information Available Upon Request



Mapping conducted by:
Louisiana Economic Development
Business Intelligence
617 N Third St
Baton Rouge, Louisiana 70802
(225) 342-3725
OpportunityLouisiana.com