

Exhibit A.

Crosspoint South Site

Color Aerial Photo Map

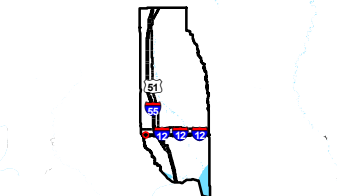


GREATER NEW ORLEANS
INC
REGIONAL ECONOMIC DEVELOPMENT

Crosspoint South Site Color Aerial Photo Map

Crosspoint South Site
Tangipahoa Parish, LA

GNO

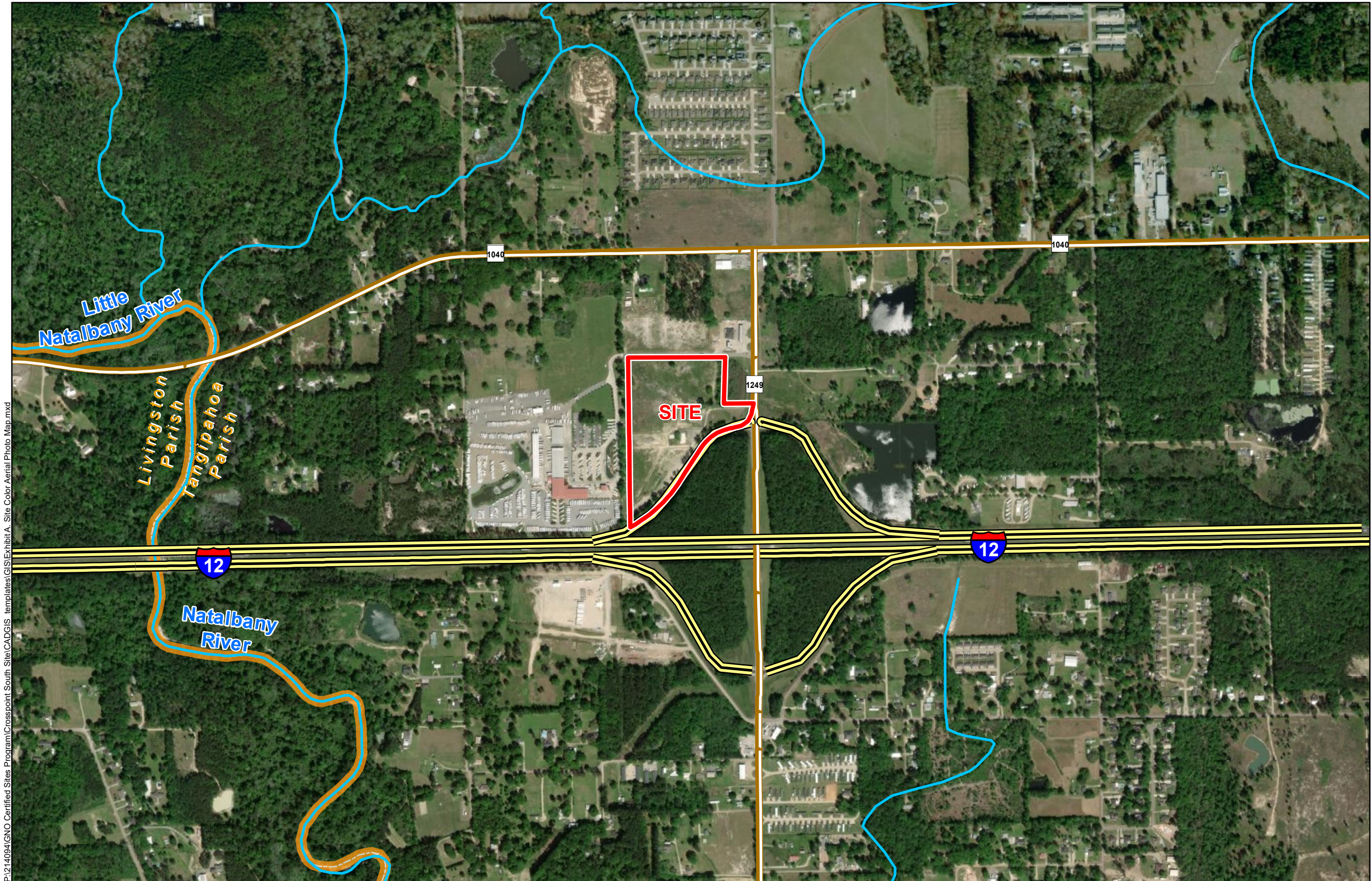


Tangipahoa Parish

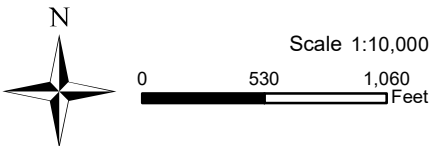
LEGEND

- Site Boundary (19.94 Ac. ±)
- Parish Boundary
- Existing Roadway
 - Interstate
 - Rural State Highway
 - Local Roads
 - Stream

P:\214094\GNO Certified Sites Program\Crosspoint South Site\CADGIS templates\GIS\Exhibit A. Site Color Aerial Photo Map.mxd



General Notes:
1. No attempt has been made by CSRS, Inc. to verify site boundary, title, actual legal ownership, deed restrictions, servitudes, easements, or other burdens on the property, other than that furnished by the client or his representative.
2. Transportation data from 2013 TIGER datasets via U.S. Census Bureau at ftp2.census.gov/geo/tiger/TIGER2013.
3. 2015 aerial imagery from USDA-APFO National Agricultural Inventory Project (NAIP) and may not reflect current ground conditions.



Date: 2/11/2021
Project Number: 214094
Drawn By: SEW
Checked By: EEB

CSRS