

Exhibit BB.

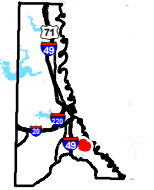
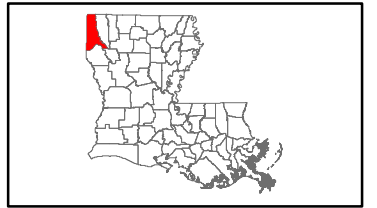
Highway 1 Leonard Road Site All Utilities Infrastructure Site Map



Highway 1 Leonard Road Site All Utilities Infrastructure Site Map

Highway 1 Leonard Road Site
Caddo Parish, LA

NLEP



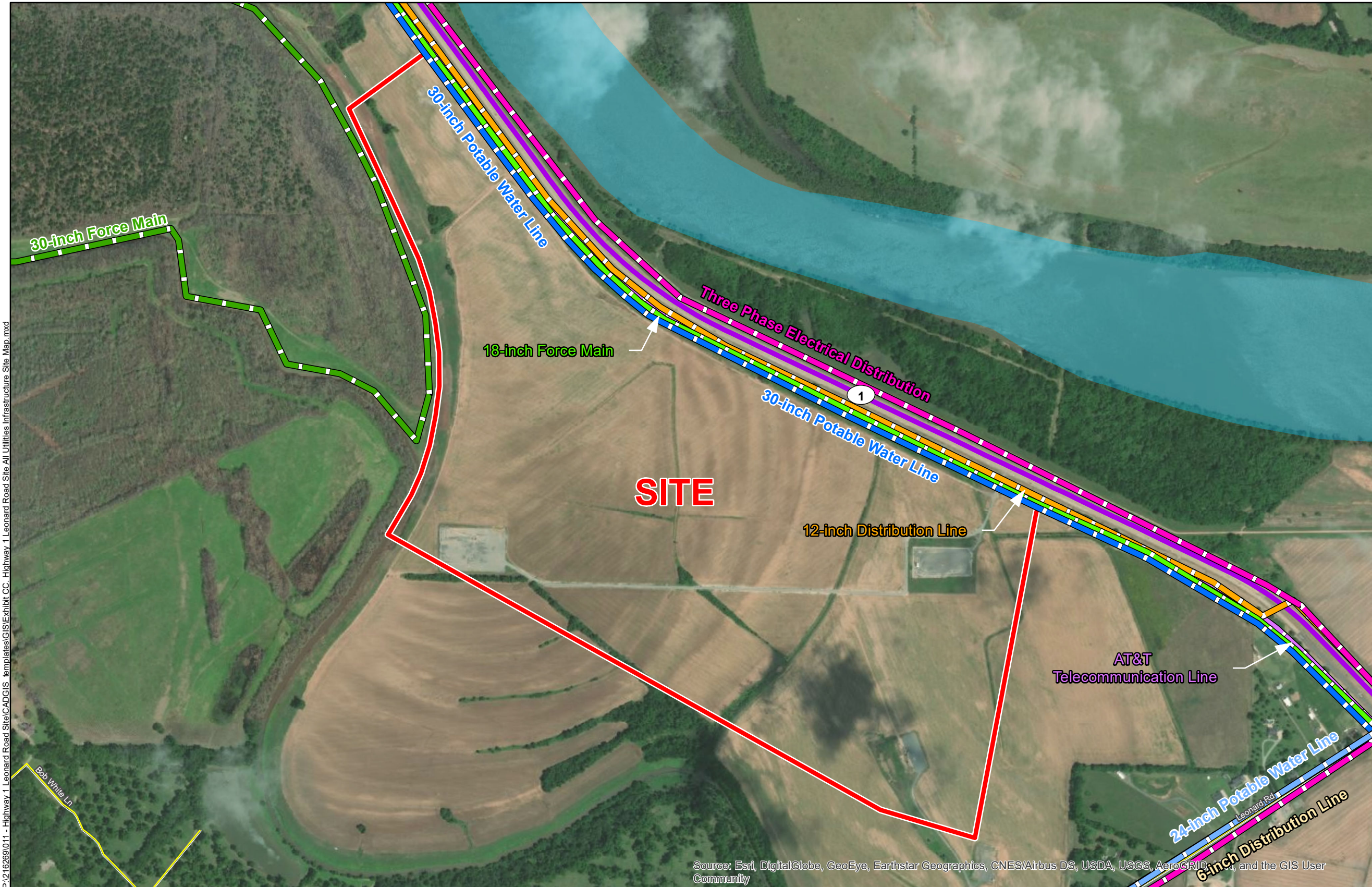
Caddo Parish

LEGEND

- Site Boundary
- Existing AT&T Telecommunication Lines
- City of Shreveport Potable Water Infrastructure**
- 24-inch Potable Water Line
- 30-inch Potable Water Line
- City of Shreveport Wastewater Infrastructure**
- 18-inch Force Main
- 30-inch Force Main
- SWEPCO Electrical Infrastructure**
- Three Phase Distribution Line
- CenterPoint Natural Gas Infrastructure**
- 6-inch Distribution Line
- 12-inch Distribution Line
- Existing Roadway**
- 4-Lane State Highway
- Local Roads
- Railroad
- Waterbody



Date:	8/3/2020
Project Number:	216269216269
Drawn By:	KPH
Checked By:	EEB



P:\216269\011 - Highway 1 Leonard Road Site\CAD\GIS templates\GIS\Exhibit CC - Highway 1 Leonard Road Site All Utilities Infrastructure Site Map.mxd

General Notes:
 1. No attempt has been made by CSRS, Inc. to verify site boundary, title, actual legal ownership, deed restrictions, servitudes, easements, or other burdens on the property, other than that furnished by the client or his representative.
 2. Transportation data from 2013 TIGER datasets via U.S. Census Bureau at [ftp://ftp2.census.gov/geo/tiger/TIGER2013](http://ftp2.census.gov/geo/tiger/TIGER2013).
 3. 2015 aerial imagery from ESRI Online Basemaps and may not reflect current ground conditions.

Source: Esri, DigitalGlobe, GeoEye, Earthstar Geographics, CNES/Airbus DS, USDA, USGS, AeroGRID, IGN, and the GIS User Community

