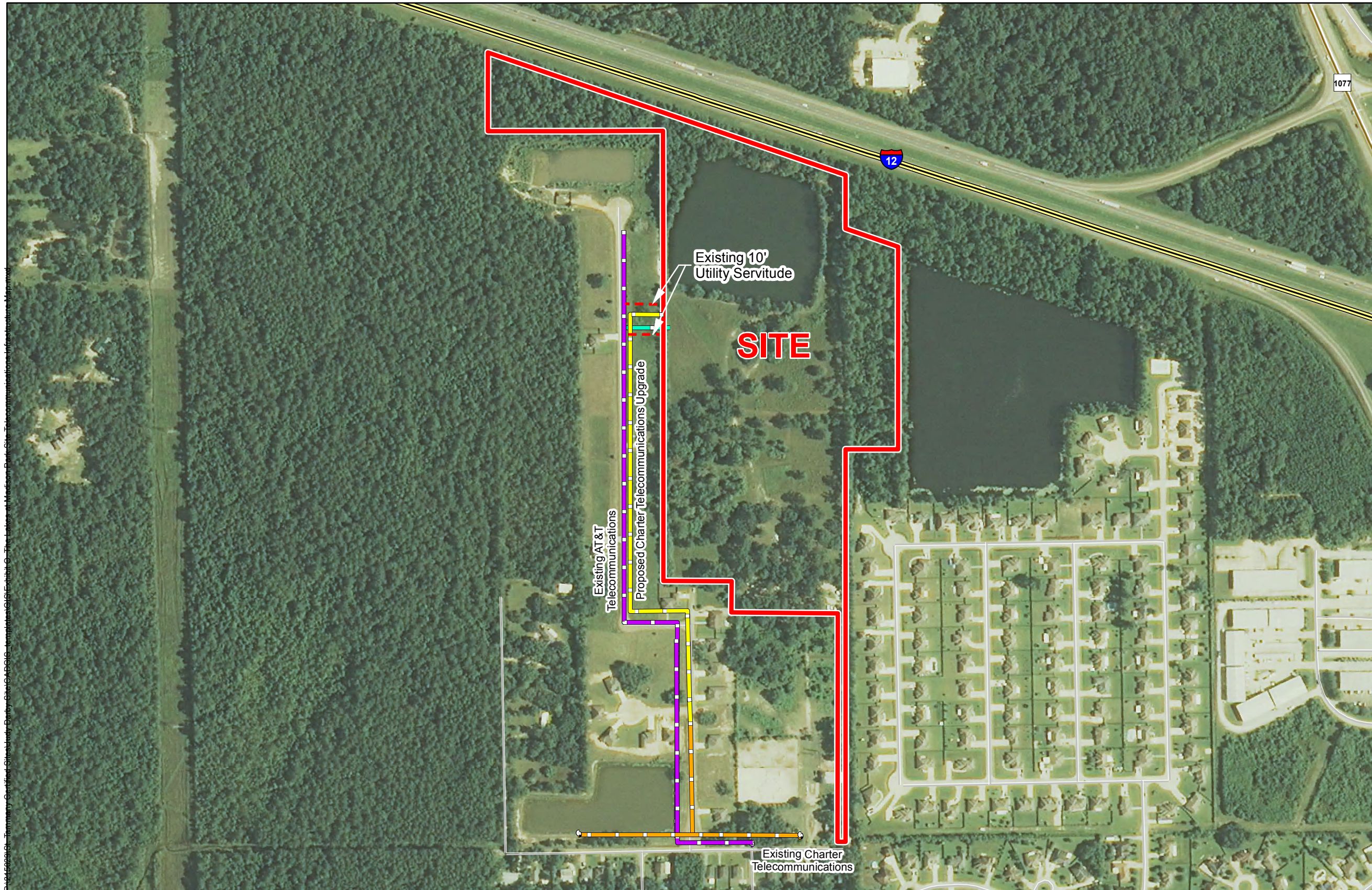
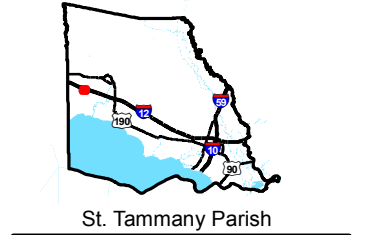


Exhibit O. The Lakes at Madison Park Site Telecommunications Infrastructure Map

Telecommunications Infrastructure
The Lakes at Madison Park Site
St. Tammany Parish, LA

Darby Holdings, LLC



LEGEND

- Site Boundary (33.548 Acres +/-)
- Existing 10' Utility Servitude (Not to Scale)
- Existing Telecommunications**
- AT&T
- Charter
- Proposed Telecommunications**
- AT&T
- Charter
- Existing Roadway**
- Interstate
- Rural State Highway
- Local Roads



Date: 6/24/2015
Project Number: 215029
Drawn By: AMB
Checked By: JAY

General Notes:

1. No attempt has been made by CSRS, Inc. to verify site boundary, title, actual legal ownership, deed restrictions, servitudes, easements, or other burdens on the property, other than that furnished by the client or his representative.
2. Transportation data from 2013 TIGER datasets via U.S. Census Bureau at [ftp://ftp2.census.gov/geo/tiger/TIGER2013](http://ftp2.census.gov/geo/tiger/TIGER2013).
3. Utility information from visual inspection and/or the individual utility operators. Exact field location has not been determined by survey. The lines shown are an approximate representation only and may have been offset for depiction purposes.
4. 10' Utility Servitude from "Palm Courts As-Built Paving & Drainage Plan" by Kelly J. McHugh & Assoc., Inc. dated 9/10/07.
5. 2013 aerial imagery from USDA-APFO National Agricultural Inventory Project (NAIP) and may not reflect current ground conditions.

