

**EXHIBIT I**

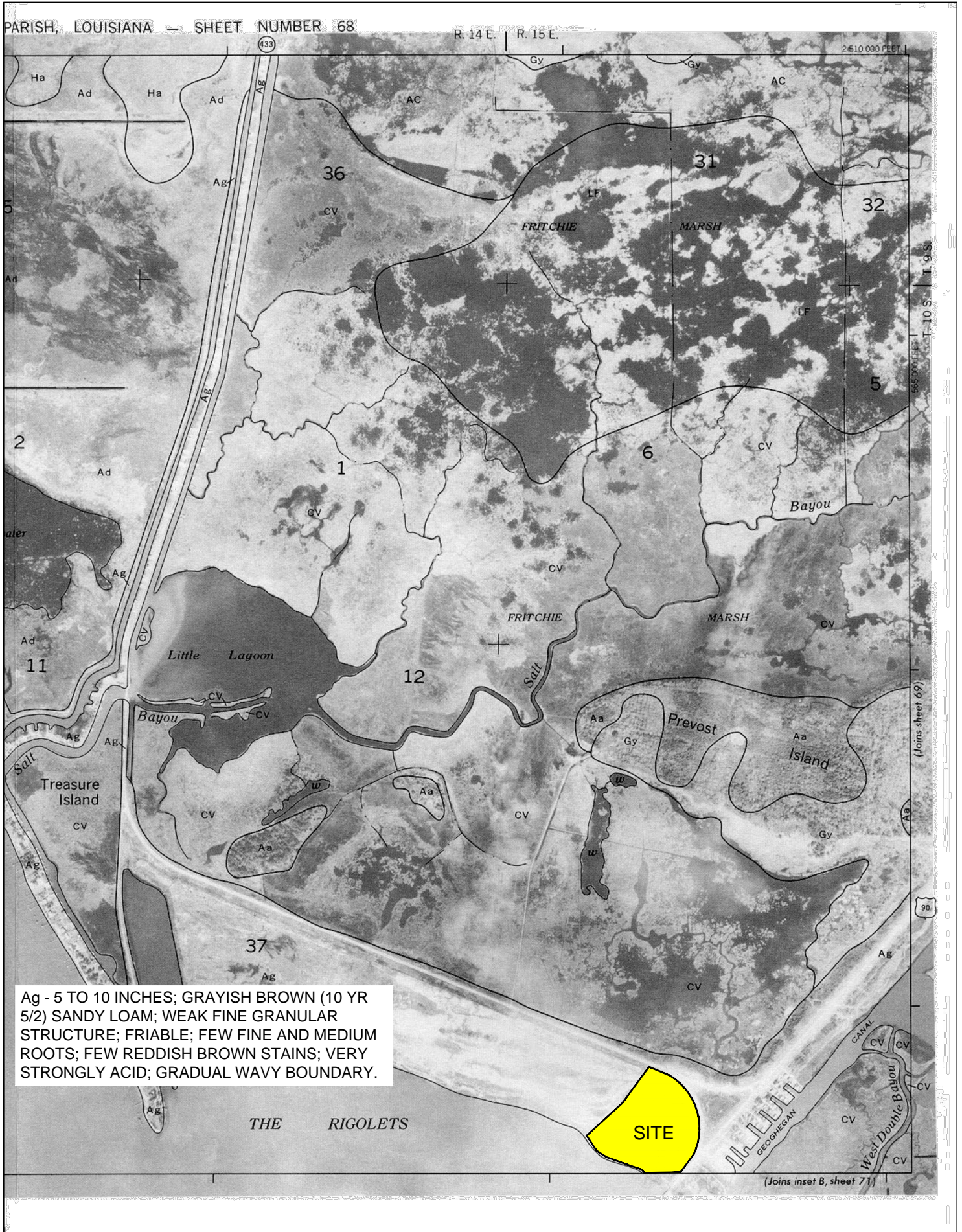
**SOILS MAP**

# EXHIBIT I - SOILS CONSERVATION SERVICE MAP

PARISH, LOUISIANA — SHEET NUMBER 68

R. 14 E. | R. 15 E.

2610000 FEET



Ag - 5 TO 10 INCHES; GRAYISH BROWN (10 YR 5/2) SANDY LOAM; WEAK FINE GRANULAR STRUCTURE; FRIABLE; FEW FINE AND MEDIUM ROOTS; FEW REDDISH BROWN STAINS; VERY STRONGLY ACID; GRADUAL WAVY BOUNDARY.

THE RIGOLETS

SITE

(Joins inset B, sheet 71)