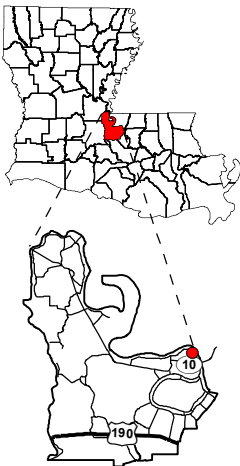


# Exhibit Z. NRG Industrial Park All Utilities Infrastructure Site Map

Project:  
**Site Exhibit for  
NRG Industrial Park  
Pointe Coupee Parish, LA**

Client:

**BRAC**



Pointe Coupee Parish

## Legend:

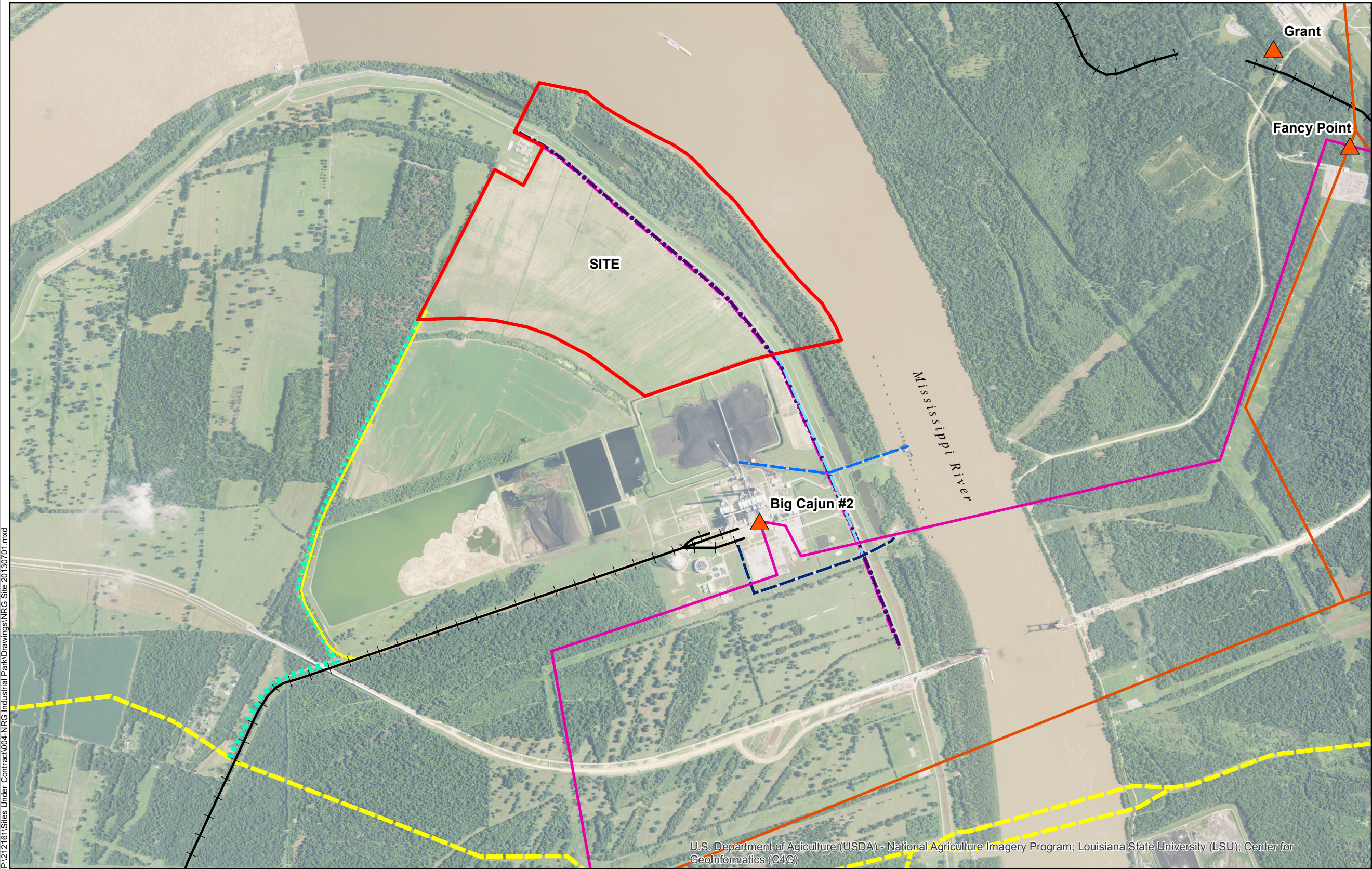
- Site Boundary (640.00± Ac.)
- Infrastructure
- 500 kV Transmission Powerline
- 230 kV Transmission Powerline
- Existing 20" Process Water Line
- Existing 96" Process Water Line
- Proposed Water Line
- Railroad
- Proposed Railroad Spur
- Telecom (T1 & T3 Lines)
- Powerline (3-Phase Line)
- Proposed Natural Gas
- Texas Eastern Transmission Pipeline



Source:  
GIS features acquired from public domain state and federal data sources (LDOTD, GNIS, LOSCO, US Census Bureau).

Date:	8/8/2013
Project Number:	212161.004
Drawn By:	JAY
Checked By:	TMG

**CSRS**  
IMAGINE SHAPE DELIVER  
6767 Perkins Road Suite 200 Baton Rouge, LA 70808  
Telephone: 225 769-0546 Fax: 225 767-0060  
www.csrsonline.com



## General Notes:

1. Telecom and Distribution Powerline location information provided by visual inspection of the site and survey titled "ALTA/ACSM Land Title Survey of a 2428.6± Acre Tract Located in Sections 31, 32, 86 and 87, T-4-S, R-10-E, and Sections 3, 4, 5, 6, 35, 37 and 38, T-4-S, R-11-E, Pointe Coupee Parish, Louisiana" by James M. Theriot.
2. Telecom line and power line are located on the southwest side of LA 981 approximately 50' from the centerline of the road.
3. Electrical Transmission Infrastructure information obtained from Entergy Service Map.
4. Natural Gas Transmission Pipeline information obtained from the National Pipeline Mapping System website (<http://www.npms.phmsa.dot.gov>).
5. Exact field location has not been determined. The telecome line shown is an approximate representation only.

P:\212161\Sites Under Contract\004-NRG Industrial Park\Drawings\NRG Site 20130701.mxd

U.S. Department of Agriculture (USDA) - National Agriculture Imagery Program; Louisiana State University (LSU); Center for GeoInformatics (C4G)