

Exhibit P. Chemin 1 Site Wetlands Delineation Report



Chenier Environmental Consulting, LLC

P.O. Box 82466

Baton Rouge, LA 70884

Business: 225-235-9557

E-mail: aaronbass@chenierenvironmental.com

December 8, 2025

Ms. Megan Duhon
One Acadiana
523 Jefferson Street
Lafayette, LA 70501

**Chemin 1 Site
Wetland Delineation Report**

Via e-mail: <mailto:megan@oneacadiana.org>, elliott.boudreaux@westwoodps.com;
christian.ordoyne@westwoodps.com

Subject: Chemin 1 Site – Wetland Delineation Letter Report
Youngsville, Louisiana

Chenier Environmental Consulting, LLC (Chenier) is submitting this Wetland Delineation Letter Report for a ±19-acre tract off Chemin Metairie Parkway in Youngsville, Lafayette Parish, Louisiana. This report was prepared to support LED's *Small Sites Application* program. Field data collected is sufficient to produce a complete wetland delineation report for submittal to the U.S. Army Corps of Engineers (USACE) for a Jurisdictional Determination Request (JD) at a later time.

BACKGROUND

This report presents the summary results of a wetland delineation that was conducted in accordance with the *Corps of Engineers Wetlands Delineation Manual* (U.S. Army Corps of Engineers, Waterways Experiment Station 1987) and subsequent guidance provided in the Regional Supplement to the *Corps of Engineers Wetland Delineation Manual: Atlantic and Gulf Coastal Plain Region* (USACE, Wetland Regulatory Assistance Program 2010). Chenier biologists visited the Site on September 26, 2025, and collected field data on three diagnostic parameters- soils, vegetation, and hydrology.

Prior to field reconnaissance, Chenier reviewed the Natural Resources Conservation Service (NRCS) Web Soil Survey (2019), the Soil Survey of Lafayette Parish (United States Department of Agriculture, Soil Conservation Service 1976), United States Geological Survey (USGS) 7.5-minute topographic maps, and relevant aerial photography. Included for your review are **Attachment A: Figure 1 – Vicinity Map; Figure 2 – Existing Conditions Map; Figure 3 – Wetland Delineation Map and Attachment B: Site Photographs.**

Project Location and Description

The site is in Youngsville, Lafayette Parish, Louisiana (Figures 1 through 3). It is rectangular-shaped agricultural field (sugar cane) bordered by Almonaster Road followed by Southside High school to the north; Mayor Lucas Denais Drive followed by agricultural land to the east; Chemin Metairie Parkway followed by agricultural land to the south; and South Larriviere Road followed by agricultural land to the west. The site can be accessed off South Larriviere Road.

The site is bound by drainage ditches on all four sides with multiple agricultural drainage features running through the site. It was planted with sugar cane at the time of the site visit.

Soils

The NRCS Web Soil Survey was used to determine mapped soil series. The revised official series descriptions were used to confirm profile matrix, redox features, and texture of soils underlying the Site. The Web Soil Survey shows that the Site may be underlain by Coteau silt loam and Frost Silt Loam (NRCS Web Soil Survey 2025) (Figure 2). **Table 1** shows the soil map unit name, soil unit percentage for the site, and the hydric status of the soil.

Table 1: NRCS Web Soil Survey Data

Map Unit Name	Soil Unit Site Percentage	Hydric Status
Coteau silt loam (CoA) 0 to 1 percent slope	8.4	No
Coteau-Frost complex (CtB) 0 to 2 percent slope	72.3	No
Frost Silt Loam (FrA) 0 to 1 percent slopes, occasionally flooded	19.4	Yes

Vegetation

The dominate vegetation on the subject property included upland species including *Cynodon dactylon* (Bermuda grass) and *Saccharum officinarum* (sugarcane). There was no wetland vegetation observed at the time of the site visit.

Hydrology

The site is divided into northern and southern sections by S2, an agricultural drainage canal that traverses the central portion of the property (Figure 3). The land exhibits a slight convex topography, directing surface water either into S2 or toward roadside drainage ditches along the northern or southern site boundaries. Drainage ditches are present along all property boundaries. The eastern and western boundary ditches (S1 and S3) convey flow south into S3 (along the southern boundary), which continues eastward offsite. Along the northern boundary, a subsurface drainage pipe directs flow east off the property, ultimately discharging into a

municipal drainage canal. At the time of the site visit, the boundary ditches contained little to no standing water.

Conclusions

No wetlands or indicators of wetland hydrology were observed on the site during the field visit. The site was fully covered by mature sugarcane; however, given its history as an agricultural field and the absence of hydric soils, it is unlikely that jurisdictional wetlands are present, even accounting for the limited visibility within the crop. Three drainage ditches (S1, S2, and S3) and a subsurface drainage pipe along the northern boundary are present on the property, each conveying runoff east offsite. None of these features exhibited relatively permanent flow or other characteristics indicative of jurisdictional waters, and therefore, they appear to be non-jurisdictional.

Qualifications

Aaron Bass, PhD, is a coastal scientist with over 30 years' experience conducting wetland delineations and permitting complex projects in sensitive habitats throughout the Gulf Coast.

Should you have any questions about the report, please contact me at 225-235-9557 or via email at Aaronbass@chenierenvironmental.com.

Sincerely,

Chenier Environmental Consulting, LLC



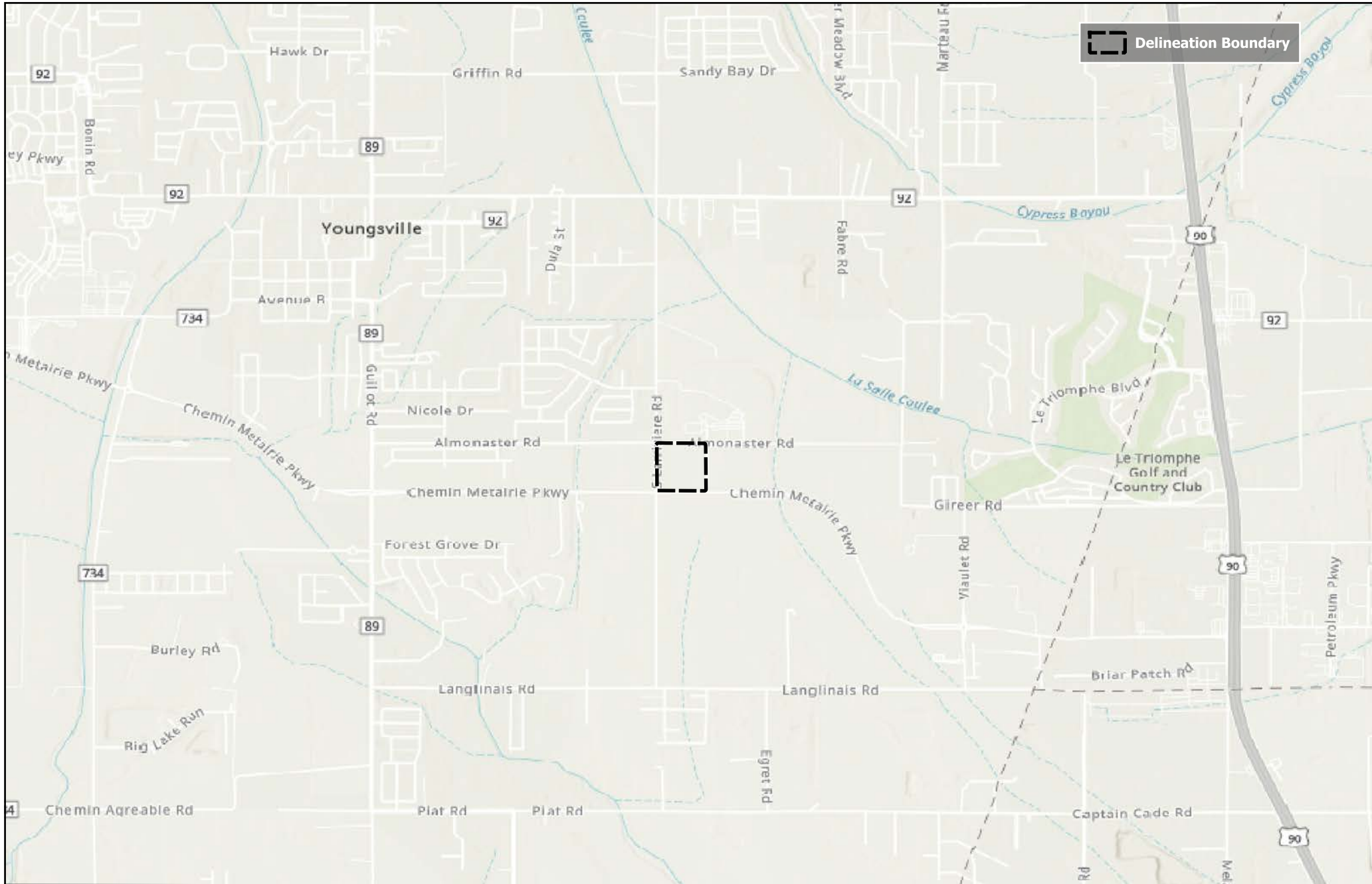
Aaron S. Bass, Ph.D.

Chenier Environmental Consulting, LLC

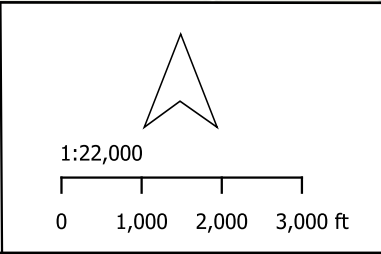
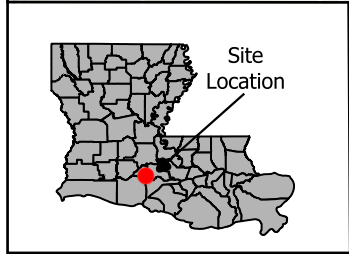
4607 Bluebonnet, Blvd. Suite A

Baton Rouge, Louisiana 70809

ATTACHMENT A
FIGURES



Delineation Boundary

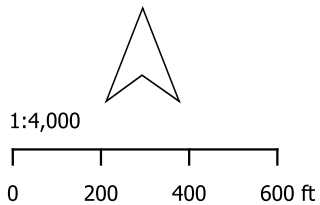
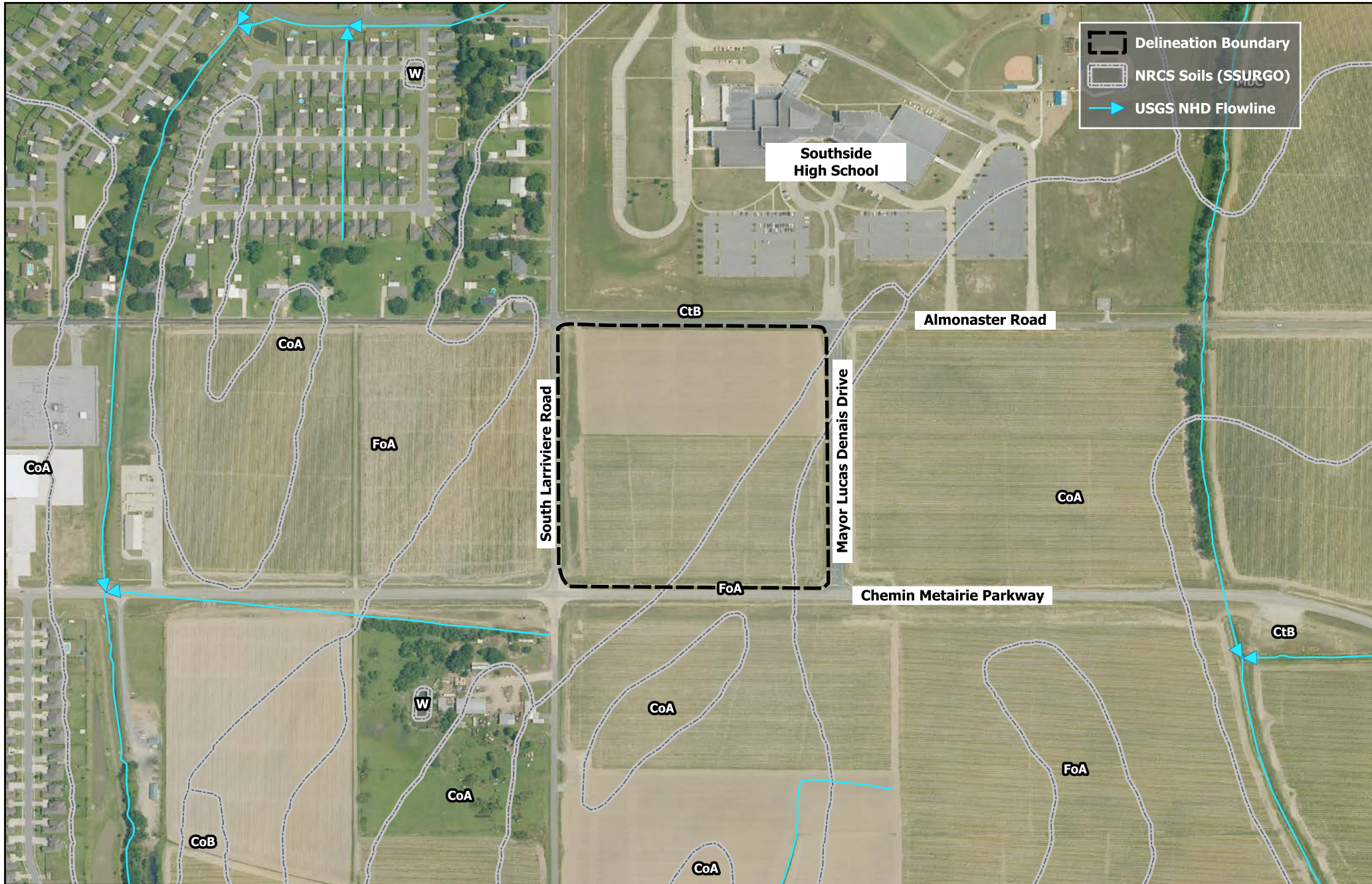


**Figure 1 - Vicinity Map
Chemin 1 Site
One Acadiana
Lafayette Parish, Louisiana**

Notes:

CHENIER

Data Source: Chenier Environmental Consulting, LLC;
Imagery: USGS Topographic Map
Map Date: December 8, 2025
Created By: Brad Griffin



**Figure 2 - Existing Conditions Map
Chemin 1 Site
One Acadiana
Lafayette Parish, Louisiana**

Delineation Boundary Soil Types:

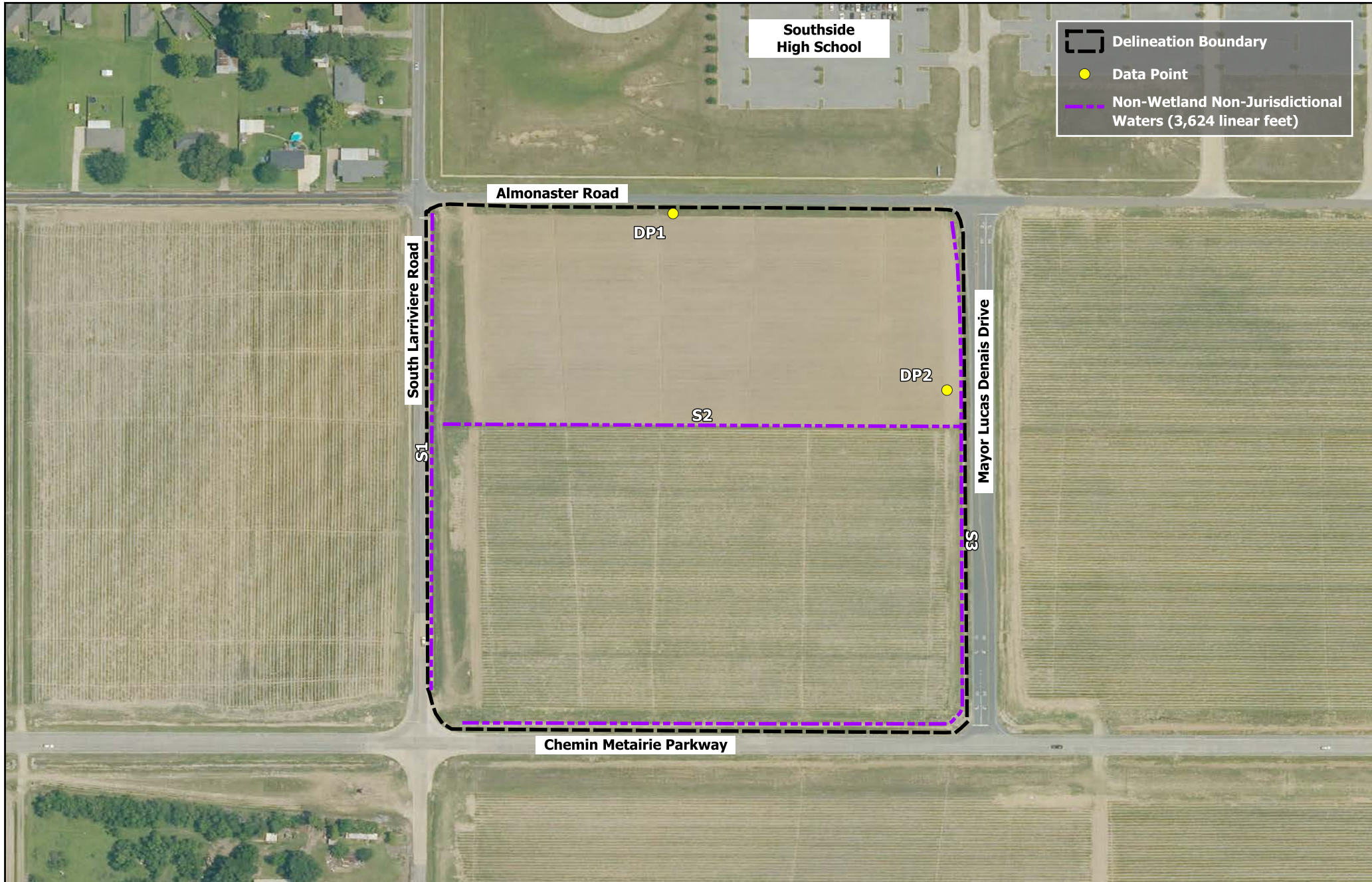
CoA - Coteau silt loam, 0 to 1% slopes



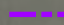
CtB - Coteau-Frost complex, gently undulating

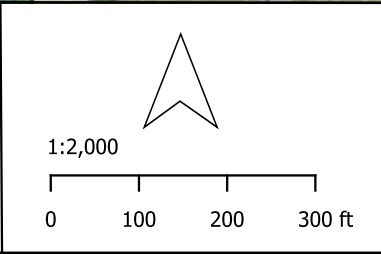
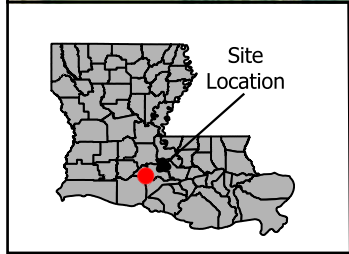
FoA - Frost silt loam, 0 to 1% slopes

CHENIER

Data Source: Chenier Environmental Consulting, LLC; NRCS; NHD; Imagery: 2023 NAIP DOQQ NC Map Date: December 8, 2025 Created By: Brad Griffin




 Delineation Boundary
 Data Point
 Non-Wetland Non-Jurisdictional Waters (3,624 linear feet)



**Figure 3 - Wetland Delineation Map
Chemin 1 Site
One Acadiana
Lafayette Parish, Louisiana**

Notes:


 Data Source: Chenier
 Environmental Consulting, LLC
 Imagery: 2023 NAIP DOQQ NC
 Map Date: December 8, 2025
 Created By: Brad Griffin

ATTACHMENT B
SITE PHOTOGRAPHS



1. Overview of Subject Property (19-acres)



2. Northern Boundary



3. Eastern Boundary



4. Southern Boundary



5. Western Boundary



6. S1 - Roadside ditch on western boundary



7. S2 – Ephemeral agricultural drainage feature



8. S3 – Roadside drainage ditch (along southern boundary)



9. S3 – Roadside drainage ditch (along eastern boundary)



10. S3 connection in southeast corner



11. S4 – Subsurface drainage ditch along northern border



12. S4 – connection to the bayou to the east



13. DP1 habitat view



14. DP1 soils



15. DP2 habitat view



16. DP2 soils



17. Representative agriculture field drainage into S3



18. Representative agriculture field drainage into S4