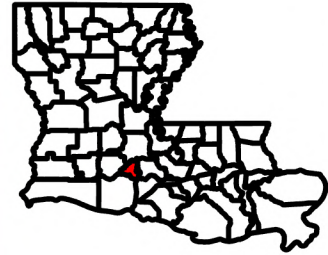


Exhibit BB. Chemin 3 Site All Utilities Infrastructure Map

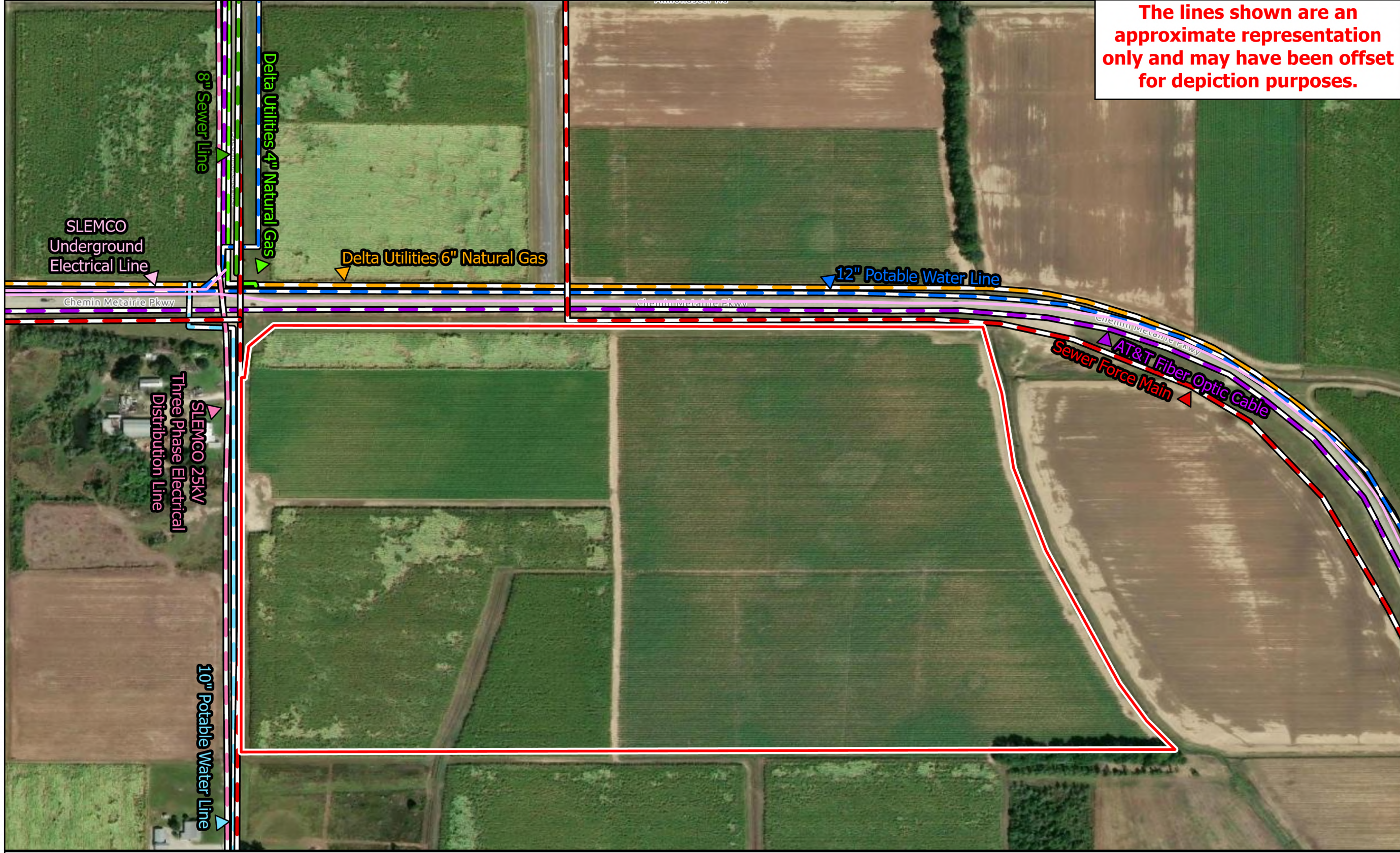


Chemin 3 Site All Utilities Infrastructure Map

One Acadiana



The lines shown are an approximate representation only and may have been offset for depiction purposes.

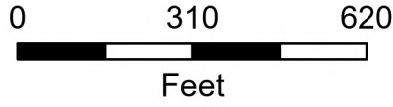


Legend

- Site Boundary (±83.77 Ac.)
- AT&T Fiber Optic Cable
- Delta Utilities Natural Gas Distribution**
 - Existing 6" Main
 - Existing 4" Main
- SLEMCO Electrical Distribution**
 - 3 Phase Overhead
 - Underground Electrical
- City of Youngsville Potable Water Infrastructure**
 - 10" Water Line
 - 12" Water Line
- City of Youngsville Wastewater Infrastructure**
 - 8 inch Swer Line
 - Force Main

General Notes:

1. The information presented herein is for planning purposes only. Further detailed due diligence MUST be completed prior to making decisions regarding the site.
2. No attempt has been made by CSRS, Inc. to verify site boundary, title, actual legal ownership, deed restrictions, servitudes, easements, or other burdens on the property, other than that furnished by the client or his representative.
3. Transportation data from 2023 TIGER datasets via U.S. Census Bureau at <https://www.census.gov/geographies/mapping-files/time-series/geo/tiger-line-file.html>.
4. Aerial imagery is compiled from multiple different sources to create one cohesive image and may not reflect current ground condition.
5. Utility information from visual inspection and/or the individual utility operators. Exact field location has not been determined by survey.
6. Utility data was derived and digitized from information provided by Delta Utilities, the City of Youngsville, SLEMCO, AT&T, & the NPMS



Date: 5/6/2026
Project Number: 214002
Drawn By: CFO
Checked By: EEB

P:\214002\One Acadiana Certified Sites Program\Certified Sites\Chemin 3 Site (Lafayette Parish Industrial Site)