

# Exhibit S. The Lakes at Madison Park Site US Geological Survey Quad Map


USGS Topographic Map  
The Lakes at Madison Park Site  
St. Tammany Parish, LA

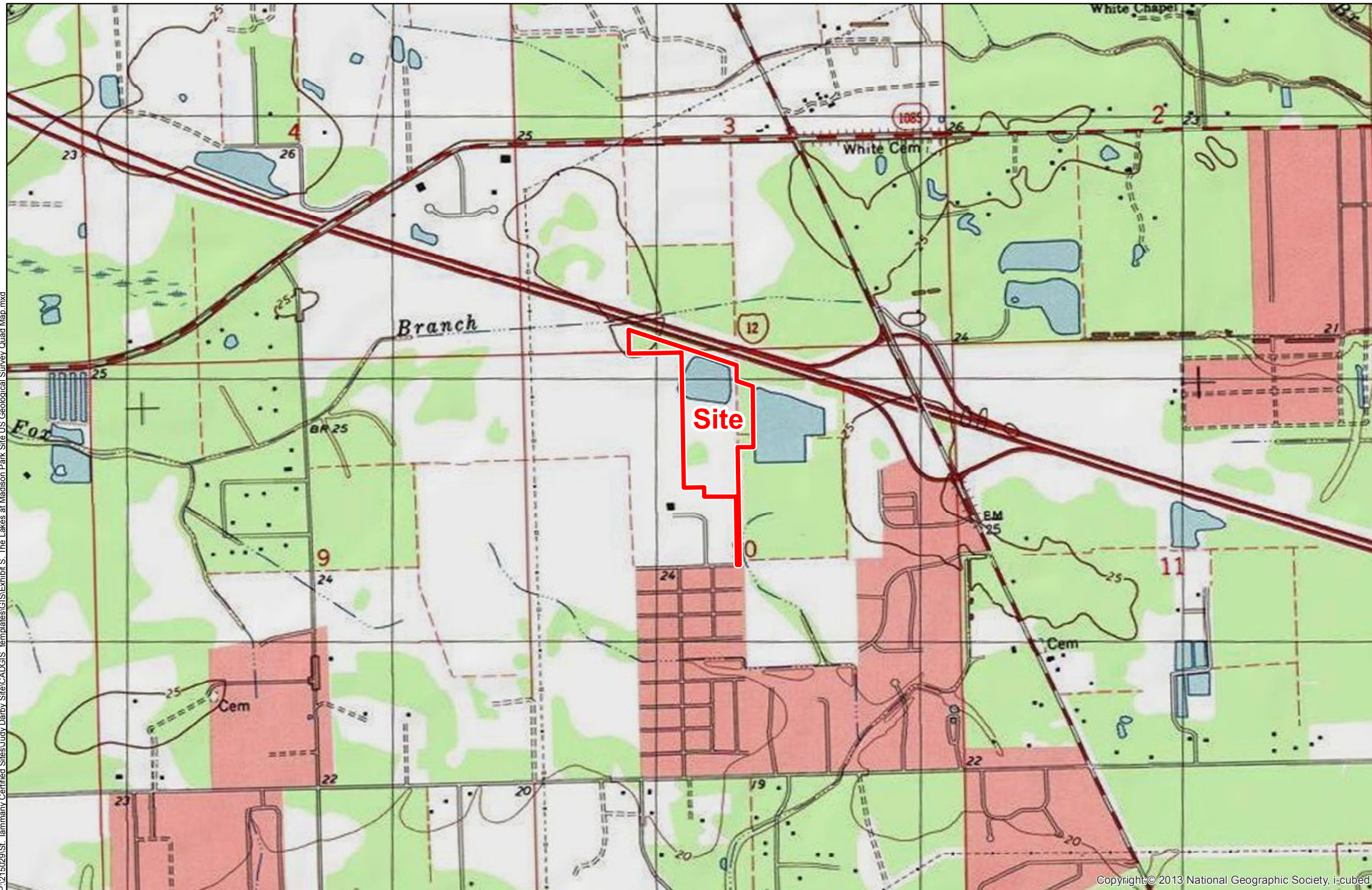
Darby Holdings, LLC



St. Tammany Parish

**LEGEND**

 Site Boundary  
(33.548 Acres +/-)

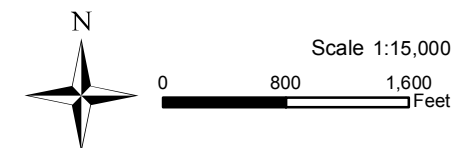


P:\215029\St. Tammany Certified Sites\Judy Darby Site\CAD\GIS templates\GIS\Exhibit S. The Lakes at Madison Park Site US Geological Survey Quad Map.mxd

Copyright © 2013 National Geographic Society, i-cubed

**General Notes:**

1. No attempt has been made by CSRS, Inc. to verify site boundary, title, actual legal ownership, deed restrictions, servitudes, easements, or other burdens on the property, other than that furnished by the client or his representative.
2. Topo data and symbologies from USDA NRCS site <http://datagateway.nrcs.usda.gov/GDGOrder.aspx> as created by USDA/NRCS National Geospatial Center of Excellence "USDA-NRCS-NGC Digital Raster Graphic MrSID Mosaic".



Date: 6/23/2015  
Project Number: 215029  
Drawn By: AMB  
Checked By: JAY

