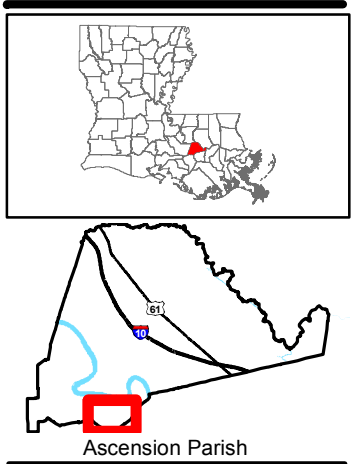


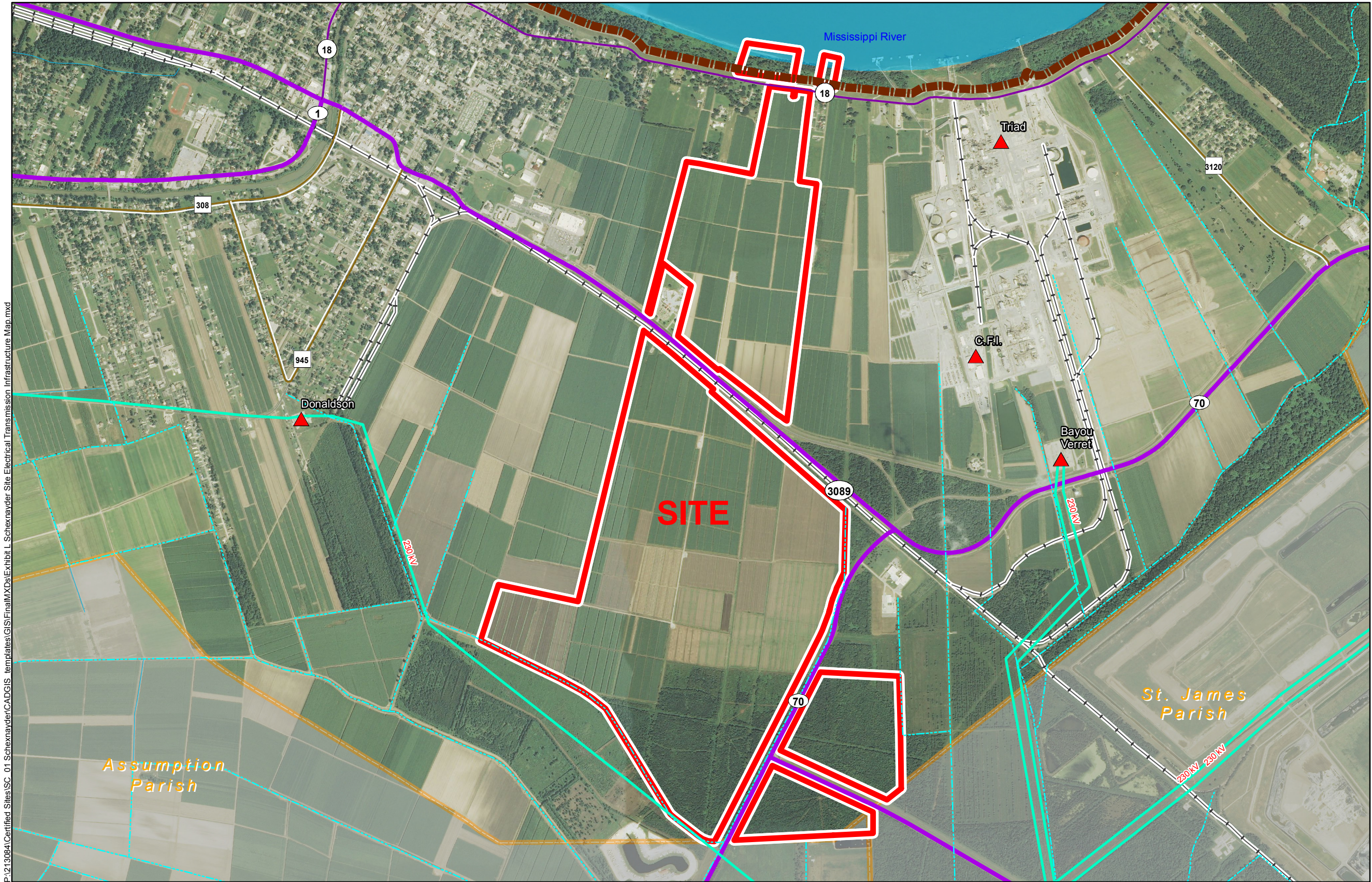
Exhibit L. Schexnayder Site Electrical Transmission Infrastructure Map

Existing Electric Transmission
Schexnayder Site
Ascension Parish, LA



LEGEND

- Site Boundary (1,000 Acres +/-)
- Electric Transmission**
 - 230 kV
- Substation**
- Existing Roadway**
 - 4-Lane State Highway
 - Urban State Highway
 - Rural State Highway
- Railroad
- Levee
- Canal or Ditch
- Stream or River
- Waterbody
- Parish Boundary



P:\213084\Certified Sites\SC_01_Schexnayder\CAD\GIS templates\GIS\FinalMXDs\Exhibit L_Schexnayder_Site_Electrical_Transmission_Infrastructure_Map.mxd

- General Notes:
1. No attempt has been made by CSRS, Inc. to verify site boundary, title, actual legal ownership, deed restrictions, servitudes, easements, or other burdens on the property, other than that furnished by the client or his representative.
 2. Transportation data from 2013 TIGER datasets via U.S. Census Bureau at ftp2.census.gov/geo/tiger/TIGER2013.
 3. Utility information from visual inspection and/or the individual utility operators. Exact field location has not been determined by survey. The lines shown are an approximate representation only and may have been offset for depiction purposes.
 4. 2013 aerial imagery from USDA-APFO National Agricultural Inventory Project (NAIP) and may not reflect current ground conditions.

N

Scale 1:21,092

0 1,100 2,200 Feet

Baton Rouge Area Chamber of Commerce

Date: 8/21/2014
Project Number: 213084.20.002
Drawn By: MMS
Checked By: TMG

CSRS
IMAGINE SHAPE DELIVER
6767 Perkins Road Suite 200 Baton Rouge, LA 70808
Telephone: 225 769-0546 Fax: 225 767-0060
www.csrsonline.com