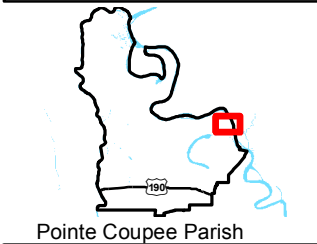


# Exhibit N. Moseley North Site Local Product Pipeline Map

Local Product Pipelines  
Moseley North Site  
Pointe Coupee Parish, LA

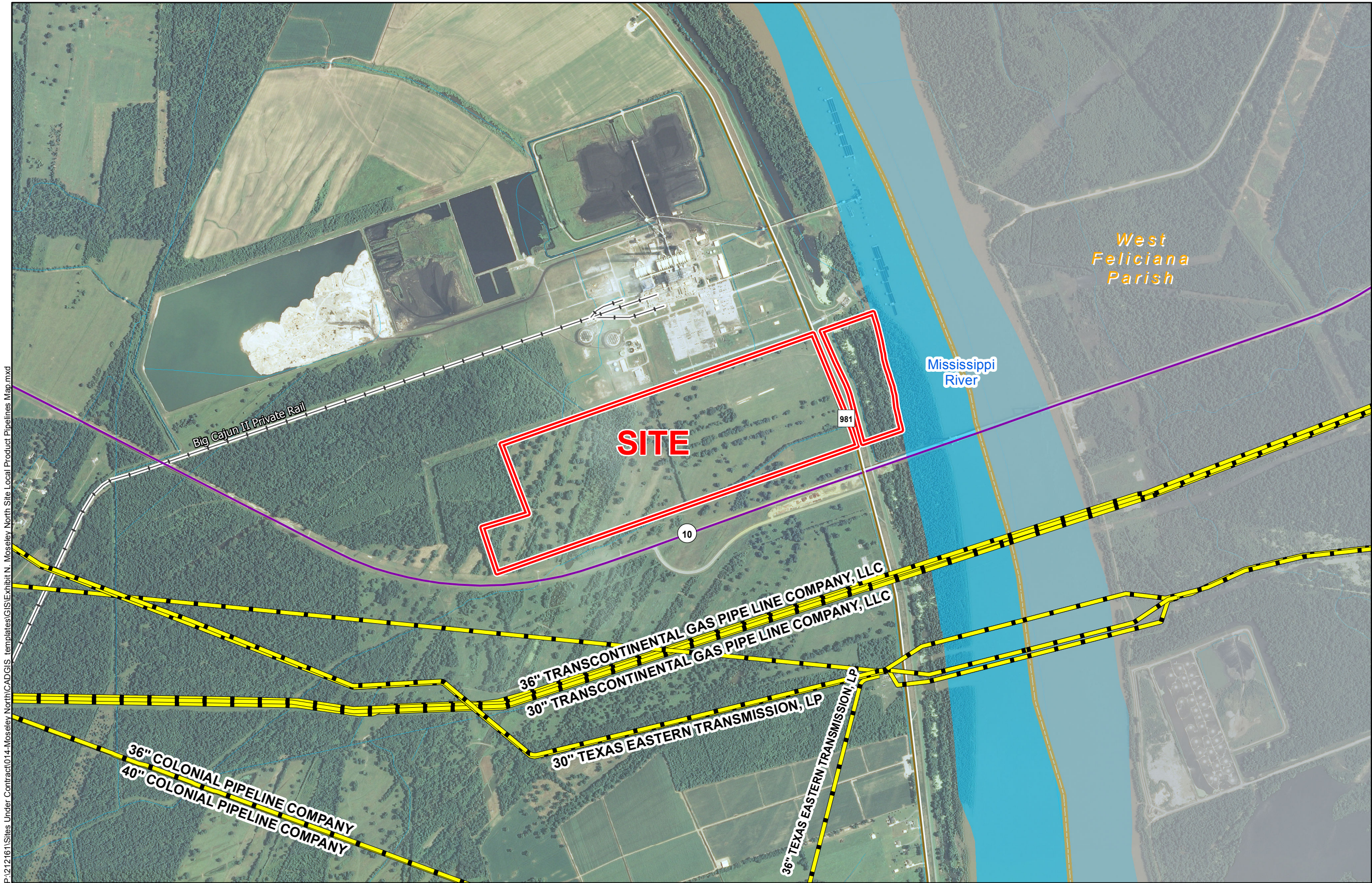
BRAC



Pointe Coupee Parish

LEGEND

- Site Boundary (304.24 Acres +/-)
- Natural Gas Transmission Pipelines
- Existing Roadway
  - Urban State Highway
  - Rural State Highway
- Railroad
- Stream
- Waterbody
- Parish Boundary



P:\212161\Sites Under Contract\014-Moseley North\GIS\Exhibit N. Moseley North Site Local Product Pipelines Map.mxd

## General Notes:

1. No attempt has been made by CSRS, Inc. to verify site boundary, title, actual legal ownership, deed restrictions, servitudes, easements, or other burdens on the property, other than that furnished by the client or his representative.
2. Transportation data from 2013 TIGER datasets via U.S. Census Bureau at <http://ftp2.census.gov/geo/tiger/TIGER2013>.
3. Pipeline information from IHS, Inc. and is current as of 02/2015. Product types in individual lines can vary and products represented here are current as of the publication of this exhibit, but may change depending on the demands and requirements of each system. Exact field location has not been determined by survey. The lines shown are an approximate representation only and may have been offset for depiction purposes.
4. 2013 aerial imagery from USDA-APFO National Agricultural Inventory Project (NAIP) and may not reflect current ground conditions.



Scale 1:20,000  
0 1,000 2,000 Feet



Date: 8/10/2015  
Project Number: 212161.20.012  
Drawn By: MAT  
Checked By: TMG

CSRS  
IMAGINE SHAPE DELIVER  
6767 Perkins Road Suite 200 Baton Rouge, LA 70808  
Telephone: 225 769-0546 Fax: 225 767-0060  
[www.csrsonline.com](http://www.csrsonline.com)