

# FOR SALE

## HEXION OILFIELD SERVICES - PORT OF CADDO-BOSSIER

3000 DOUG ATTAWAY BLVD., SHREVEPORT, LA 71115



### PROPERTY HIGHLIGHTS

- Improvements constructed on ground lease with the Port of Caddo - Bossier
- Site is 12.9 acres
- 10 silos (four (4) - 30' x 60' 3,000,000 lb. and six (6) - 20' x 50' 1,000,000 lb.)
- Belt conveyers and screw conveyers for truck and rail
- 2 - 12' x 100' truck scales
- 1 - 12' x 70' truck scale
- 3 rail spurs (KSC and UP lines)
- Port owned-and-operated locomotives available for rail car switching
- Barge cargo handling available at Port docks



For More Information, Contact:

**C. Bickham Dickson III, CCIM SIOR | Associate Broker**

**O: 318.212.1673**

**C: 318.458.7277**

**bdickson@vintagerealty.com**

All Information Contained Herein Is Believed To Be Accurate, But Is Not Warranted And No Liability Of Errors Or Omissions Is Assured By Either The Property Owner Or Vintage Realty Company Or Its Agents And Employees. Prices As Stated Herein And Product Availability Is Subject To Change And/Or Sale Or Lease Without Prior Notice, And All Sizes And Dimensions Are Subject To Correction.  
Rev 01/2018

  
**VINTAGE**  
REALTY COMPANY  
**318.222.2244**



# FOR SALE

## HEXION OILFIELD SERVICES - PORT OF CADDO-BOSSIER

3000 DOUG ATTAWAY BLVD., SHREVEPORT, LA 71115



For More Information, Contact:

**C. Bickham Dickson III, CCIM SIOR | Associate Broker**

**O: 318.212.1673**

**C: 318.458.7277**

**[bdickson@vintagerealty.com](mailto:bdickson@vintagerealty.com)**

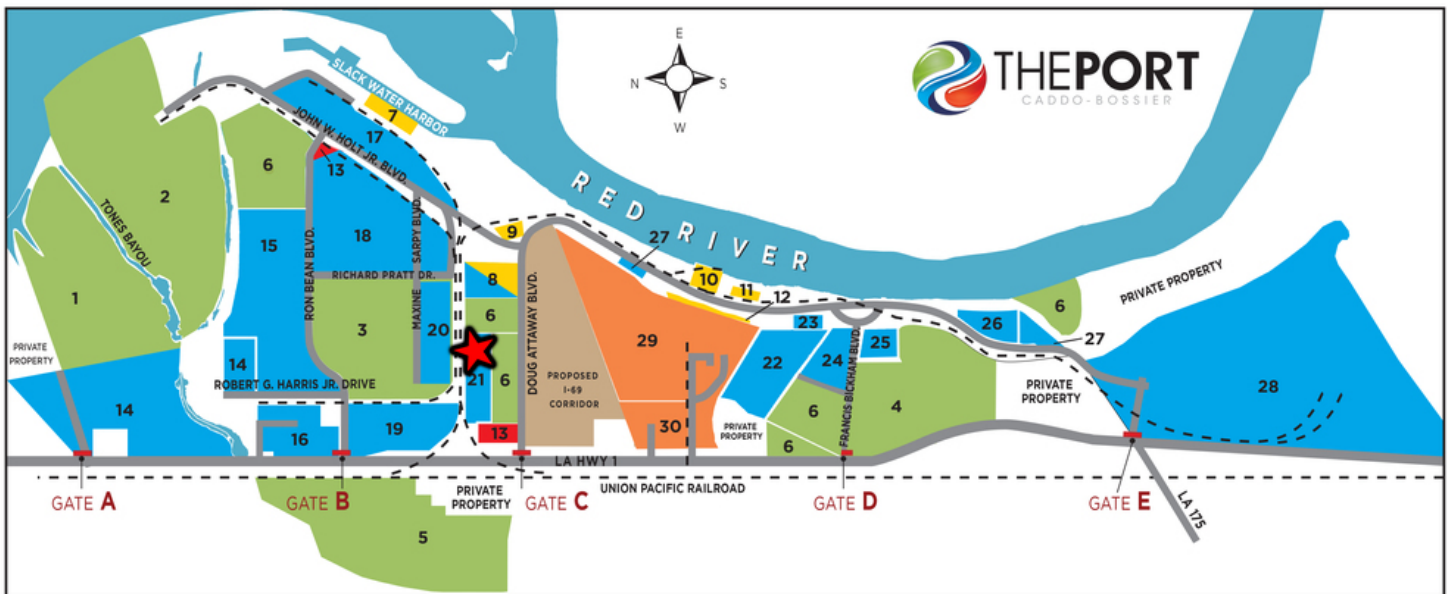
All Information Contained Herein Is Believed To Be Accurate, But Is Not Warranted And No Liability Of Errors Or Omissions Is Assured By Either The Property Owner Or Vintage Realty Company Or Its Agents And Employees. Prices As Stated Herein And Product Availability Is Subject To Change And/Or Sale Or Lease Without Prior Notice, And All Sizes And Dimensions Are Subject To Correction.  
Rev 01/2018

  
**VINTAGE**  
REALTY COMPANY  
**318.222.2244**

# FOR SALE

## HEXION OILFIELD SERVICES - PORT OF CADDO-BOSSIER

3000 DOUG ATTAWAY BLVD., SHREVEPORT, LA 71115



### AVAILABLE SITES

- 1 North Whittington
- 2 Scopini Island
- 3 Ron Bean
- 4 Tensas-Delta
- 5 Cupples
- 6 Information Available Upon Request

### PORT FACILITIES

- 7 Slack Water Harbor & Dock
- 8 100,000 sf Warehouse
- 9 Regional Commerce Center
- 10 General Cargo Dock/Roll-On, Roll-Off/Transit Shed
- 11 60,000 sf Warehouse
- 12 Hardstand

### SWEPCO SUBSTATIONS

- 13 SWEPCO Substations

### PORT TENANTS

- 8 ADS Logistics
- 14 Specialty Distributor
- 15 Ternium
- 16 Omni
- 17 West Louisiana Aggregates
- 18 Pratt Industries
- 19 Calumet Packaging
- 20 Ronpak
- 21 Hexion, Inc.
- 22 RRT North
- 23 CARBO Ceramics

### PORT TENANTS CONT.

- 24 Davison Trans. Serv., Inc.
- 25 RRT South
- 26 Oakley
- 27 Blount Bros. Construction
- 28 BENTELER Steel/Tube

### DOING BUSINESS AT THE PORT

- 29 Industrial Complex
- 30 Industrial Complex

### PROPOSED I-69 CORRIDOR

### THE PORT:

- FOREIGN TRADE ZONE - #145
- US CUSTOMS PORT OF ENTRY
- ATTAINMENT AREA FOR AIR PERMITTING

For More Information, Contact:

**C. Bickham Dickson III, CCIM SIOR | Associate Broker**

**O: 318.212.1673**

**C: 318.458.7277**

**bdickson@vintagerealty.com**

All Information Contained Herein Is Believed To Be Accurate, But Is Not Warranted And No Liability Of Errors Or Omissions Is Assured By Either The Property Owner Or Vintage Realty Company Or Its Agents And Employees. Prices As Stated Herein And Product Availability Is Subject To Change And/Or Sale Or Lease Without Prior Notice, And All Sizes And Dimensions Are Subject To Correction.  
Rev 01/2018

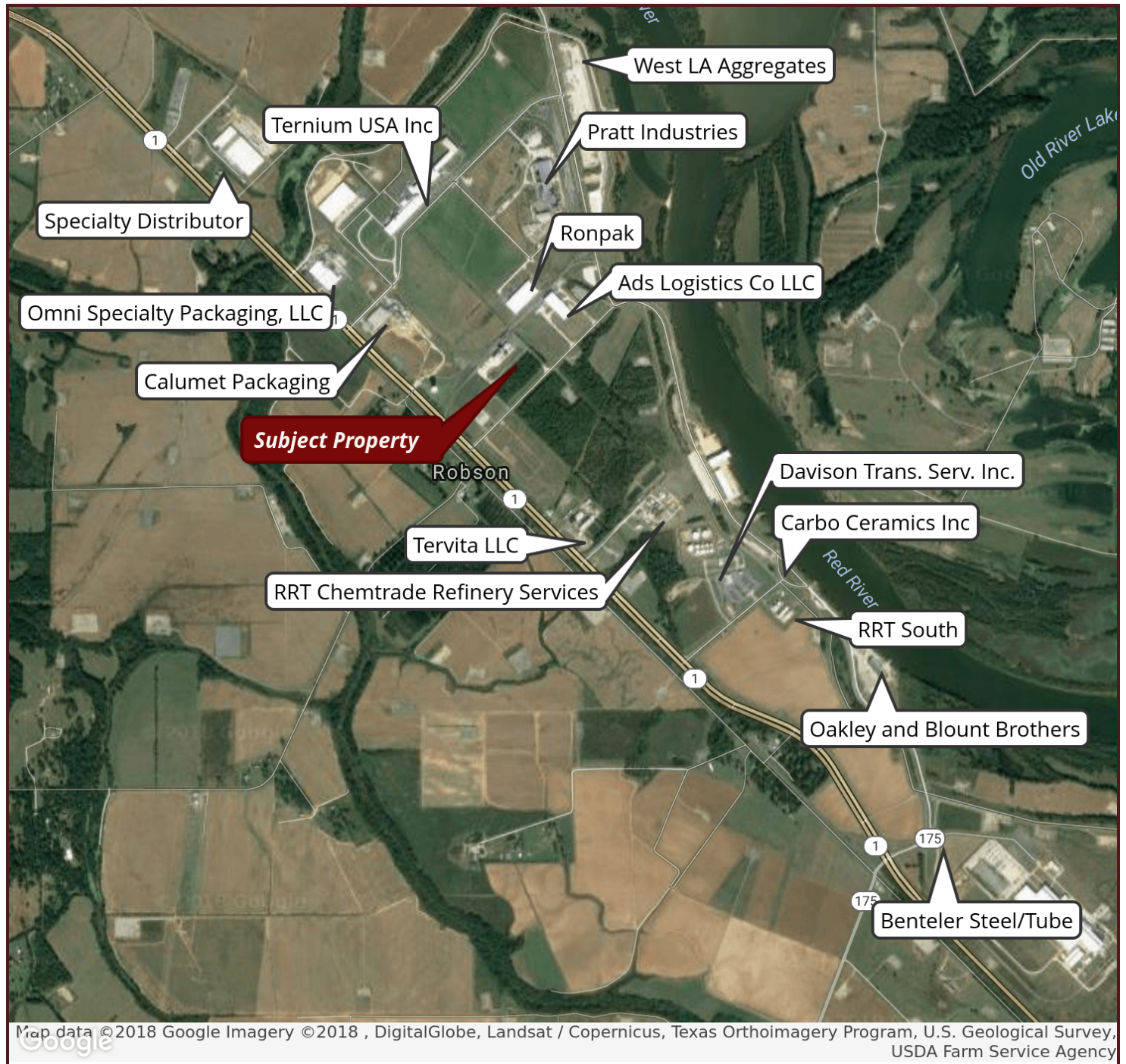




# FOR SALE

## HEXION OILFIELD SERVICES - PORT OF CADDO-BOSSIER

3000 DOUG ATTAWAY BLVD., SHREVEPORT, LA 71115



For More Information, Contact:

**C. Bickham Dickson III, CCIM SIOR | Associate Broker**

**O: 318.212.1673**

**C: 318.458.7277**

**bdickson@vintagerealty.com**

All Information Contained Herein Is Believed To Be Accurate, But Is Not Warranted And No Liability Of Errors Or Omissions Is Assured By Either The Property Owner Or Vintage Realty Company Or Its Agents And Employees. Prices As Stated Herein And Product Availability Is Subject To Change And/Or Sale Or Lease Without Prior Notice, And All Sizes And Dimensions Are Subject To Correction.  
Rev 01/2018

