
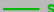





## **Port of Terrebonne - West Bank**

### **Exhibit 16 – Wastewater Infrastructure Map**

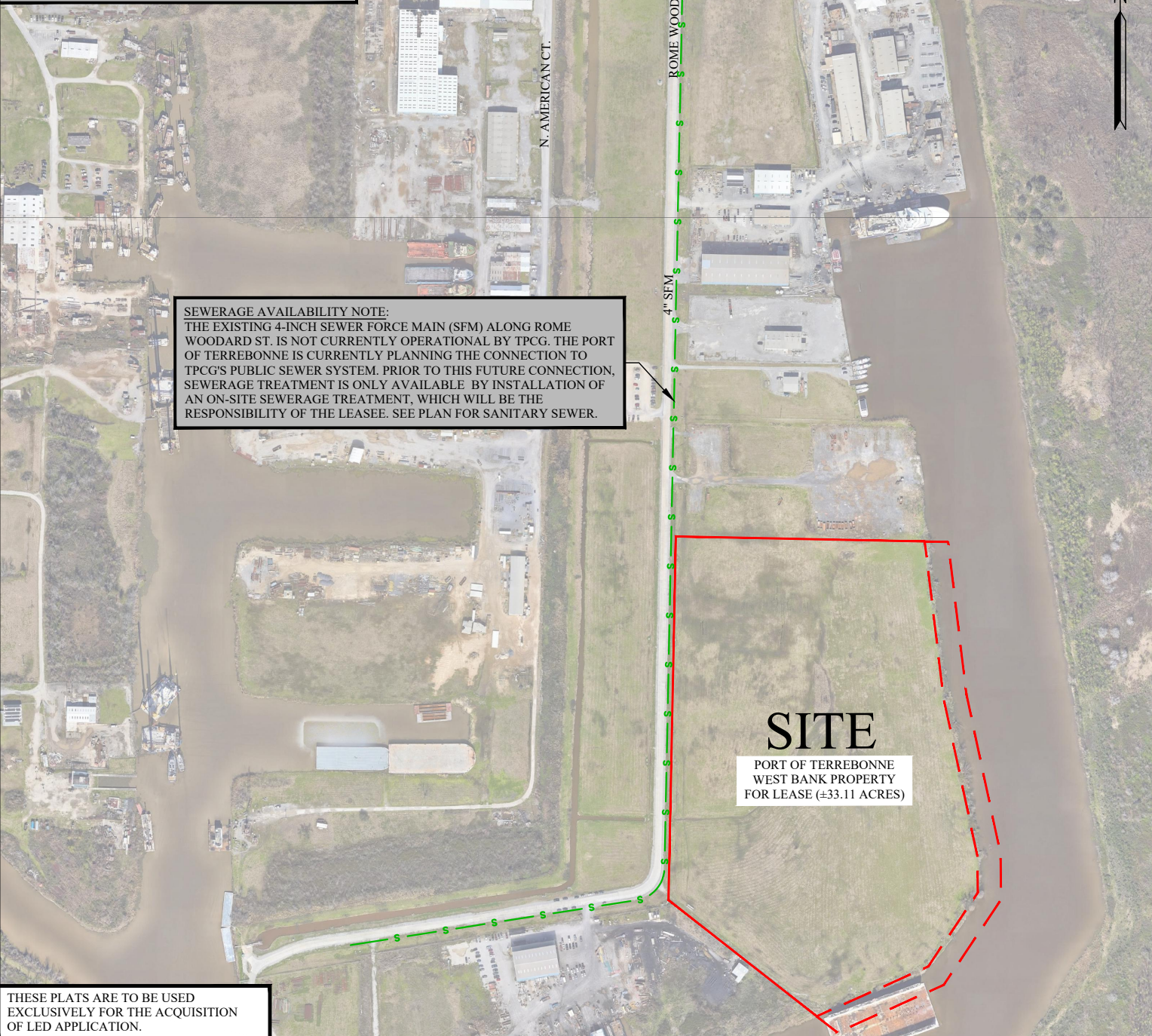
# LEGEND

-  DENOTES SEWER FORCE MAIN (PUBLIC)
-  DENOTES SEWER FORCE MAIN (NOT CONNECTED)
-  DENOTES PROPOSED CONNECTION FOR PUBLIC AVAILABILITY

ALL SEWER INFRASTRUCTURE SHOWN IS OWNED AND OPERATED BY TERREBONNE PARISH CONSOLIDATED GOVERNMENT (TPCG) UNLESS OTHERWISE NOTED.

## SEWERAGE AVAILABILITY NOTE:

THE EXISTING 4-INCH SEWER FORCE MAIN (SFM) ALONG ROME WOODWARD ST. IS NOT CURRENTLY OPERATIONAL BY TPCG. THE PORT OF TERREBONNE IS CURRENTLY PLANNING THE CONNECTION TO TPCG'S PUBLIC SEWER SYSTEM. PRIOR TO THIS FUTURE CONNECTION, SEWERAGE TREATMENT IS ONLY AVAILABLE BY INSTALLATION OF AN ON-SITE SEWERAGE TREATMENT, WHICH WILL BE THE RESPONSIBILITY OF THE LEASEE. SEE PLAN FOR SANITARY SEWER.



THESE PLATS ARE TO BE USED EXCLUSIVELY FOR THE ACQUISITION OF LED APPLICATION.



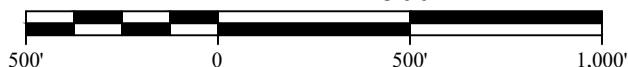
**DELTA COAST**  
CONSULTANTS, LLC

631 S. HOLLYWOOD RD.  
HOUMA, LA 70360

PHONE: 985-655-3100

[www.deltacoastllc.com](http://www.deltacoastllc.com)

SCALE: 1" = 500'



## Wastewater Infrastructure Map

### PORT OF TERREBONNE

LED CERTIFICATION APPLICATION  
FOR  
PORT OF TERREBONNE - WEST BANK  
TERREBONNE PARISH, LA

FILE: P:\2023\2023.083\DWG\LED PERMIT\PERMIT DWG\A\_EXHIBIT\_UTILITIES INFRASTRUCTURE.DWG

DATE

10/30/2024

PROJECT

2023.083

REVISION NO.

00

DESIGNED BY

DRAWN BY

EMV

CHECKED BY

MEB

SHEET NO.

X