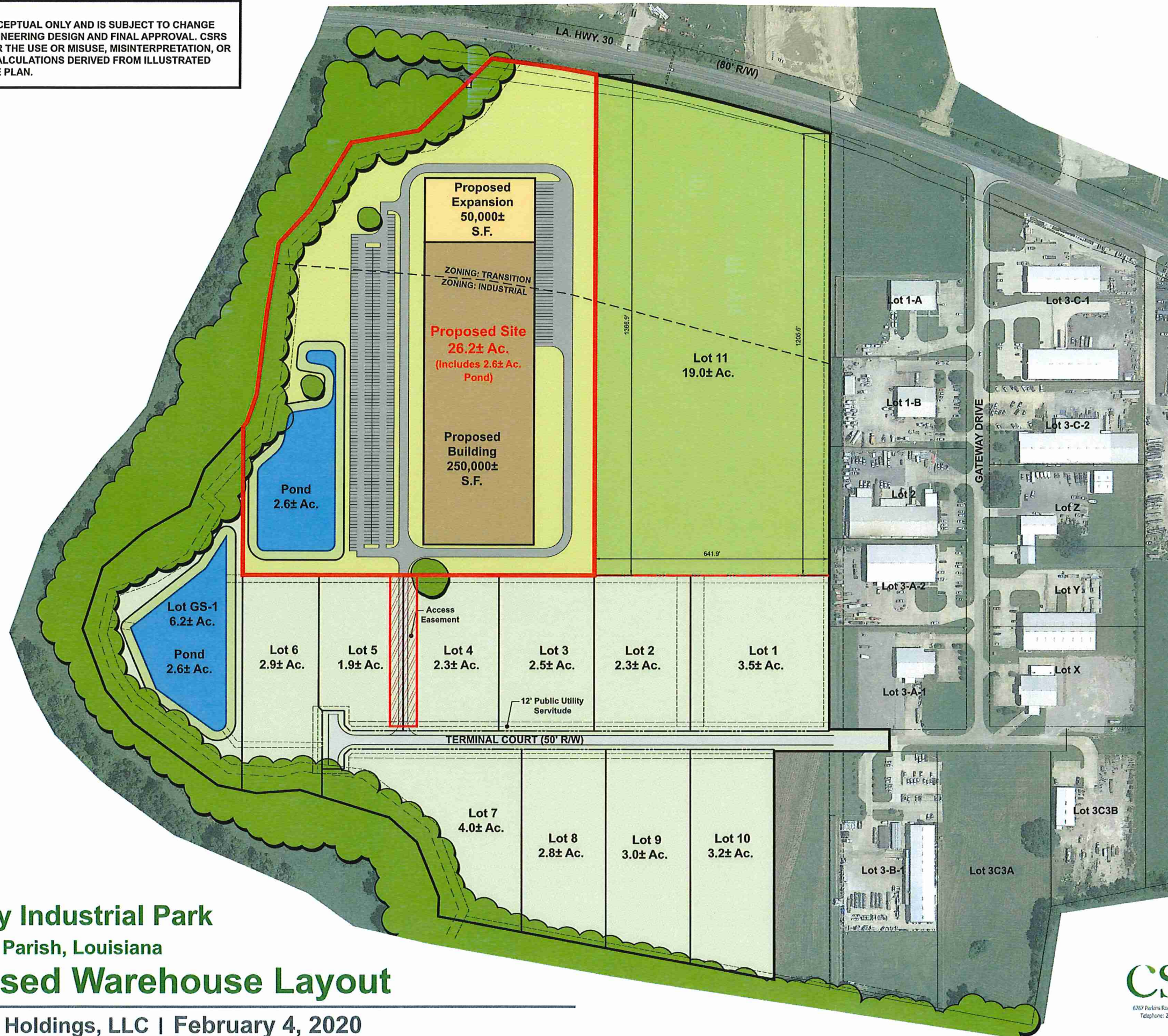


NOTE:  
SITE PLAN IS CONCEPTUAL ONLY AND IS SUBJECT TO CHANGE  
BASED UPON ENGINEERING DESIGN AND FINAL APPROVAL. CSRS  
IS NOT LIABLE FOR THE USE OR MISUSE, MISINTERPRETATION, OR  
ERRORS IN ANY CALCULATIONS DERIVED FROM ILLUSTRATED  
CONCEPTUAL SITE PLAN.

SCALE 1"=100'  
0 100' 200' 300'  
CSRS Project No. 216243



## Gateway Industrial Park Ascension Parish, Louisiana Proposed Warehouse Layout

Superstar Holdings, LLC | February 4, 2020

P:\214106\Conceptual Layouts\Active Prospects\January 2020\ 200131 Gateway Ind - 26 acre site2.dwg Feb 04, 2020 - 7:45am

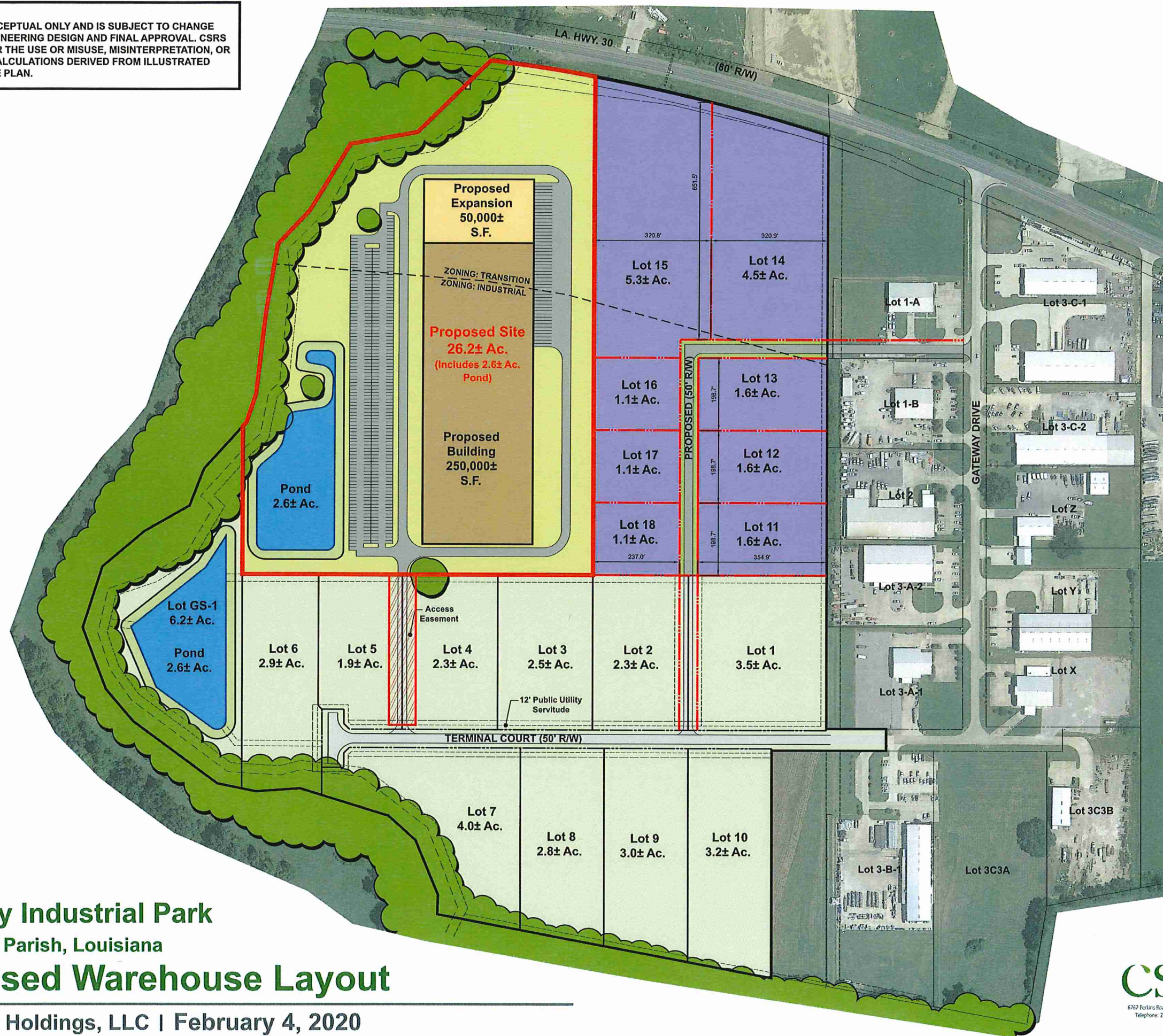
February 4, 2020

**CSRS** BUILDING STRONGER,  
SMARTER COMMUNITIES  
TOGETHER.  
6767 Perkins Road Suite 200 Baton Rouge, LA 70808  
Telephone: 225 769-6516 Fax: 225 767-0160  
www.csrsinc.com



NOTE:  
SITE PLAN IS CONCEPTUAL ONLY AND IS SUBJECT TO CHANGE  
BASED UPON ENGINEERING DESIGN AND FINAL APPROVAL. CSRS  
IS NOT LIABLE FOR THE USE OR MISUSE, MISINTERPRETATION, OR  
ERRORS IN ANY CALCULATIONS DERIVED FROM ILLUSTRATED  
CONCEPTUAL SITE PLAN.

SCALE 1"=100'  
0 100' 200' 300'  
CSRS Project No. 216243



## Gateway Industrial Park Ascension Parish, Louisiana Proposed Warehouse Layout

Superstar Holdings, LLC | February 4, 2020

P:\214106\Conceptual Layouts\Active Prospects\January 2020\ 200131 Gateway Ind - 26 acre site.dwg Feb 04, 2020 - 7:36am

February 4, 2020

**CSRS** BUILDING STRONGER,  
SMARTER COMMUNITIES  
TOGETHER.  
6767 Perkins Road Suite 200 Baton Rouge, LA 70809  
Telephone: 225 767-0515 Fax: 225 767-0360  
www.csrsinc.com