

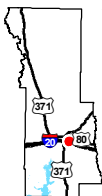
Exhibit J. Industrial Drive Minden Webster Site Local Products Pipeline Map



Industrial Drive Minden Webster Site Local Products Pipeline Map

Industrial Drive Minden
Webster Site
Webster Parish, LA

NLEP



Webster Parish

LEGEND

Site Boundary (24.96 Ac.±)

National Pipeline Mapping System

NATURAL GAS

Existing Roadway

Interstate

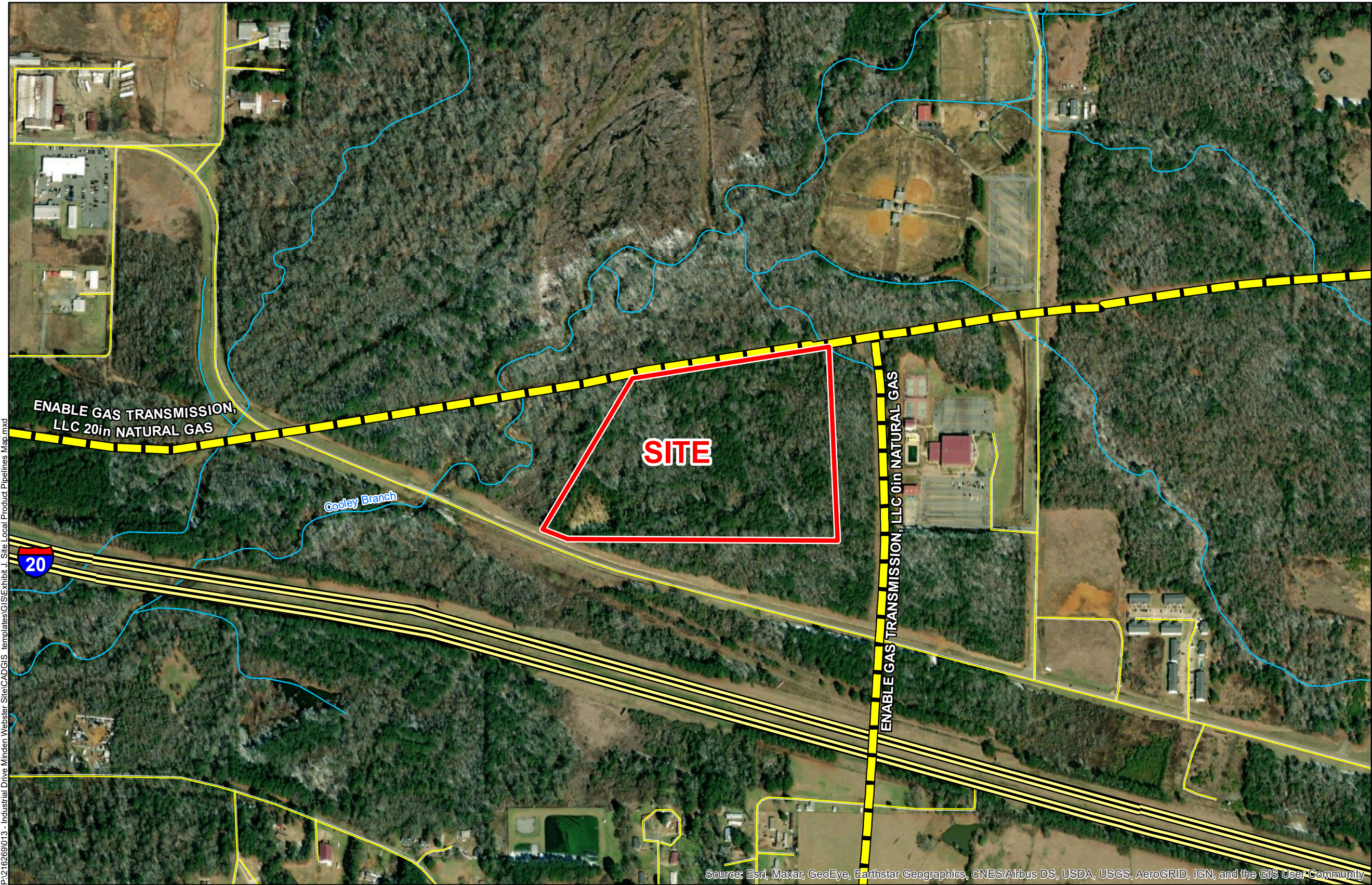
Local Roads

Stream



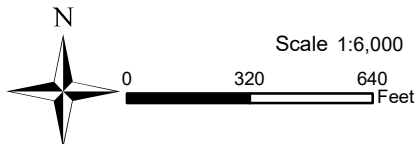
Date:	1/14/2022
Project Number:	216269
Drawn By:	SEW
Checked By:	EEB

CSRS



General Notes:

1. No attempt has been made by CSRS, Inc. to verify site boundary, title, actual legal ownership, deed restrictions, servitudes, easements, or other burdens on the property, other than that furnished by the client or his representative.
2. Transportation data from 2013 TIGER datasets via U.S. Census Bureau at <ftp://ftp2.census.gov/geo/tiger/TIGER2013>.
3. Pipeline information from IHS, Inc. and is current as of 09/2015. Product types in individual lines can vary and products represented here are current as of the publication of this exhibit, but may change depending on the demands and requirements of each system. Exact field location has not been determined by survey. The lines shown are an approximate representation only and may have been offset for depiction purposes.
4. 2015 aerial imagery from USDA-APFO National Agricultural Inventory Project (NAIP) and may not reflect current ground conditions.



P:\216269\013 - Industrial Drive Minden Webster Site\CAD\GIS templates\GIS\Exhibit J_Site Local Product Pipelines Map.mxd

Source: Esri, Maxar, GeoEye, Earthstar Geographics, CNES/Airbus DS, USDA, USGS, AeroGRID, IGN, and the GIS User Community