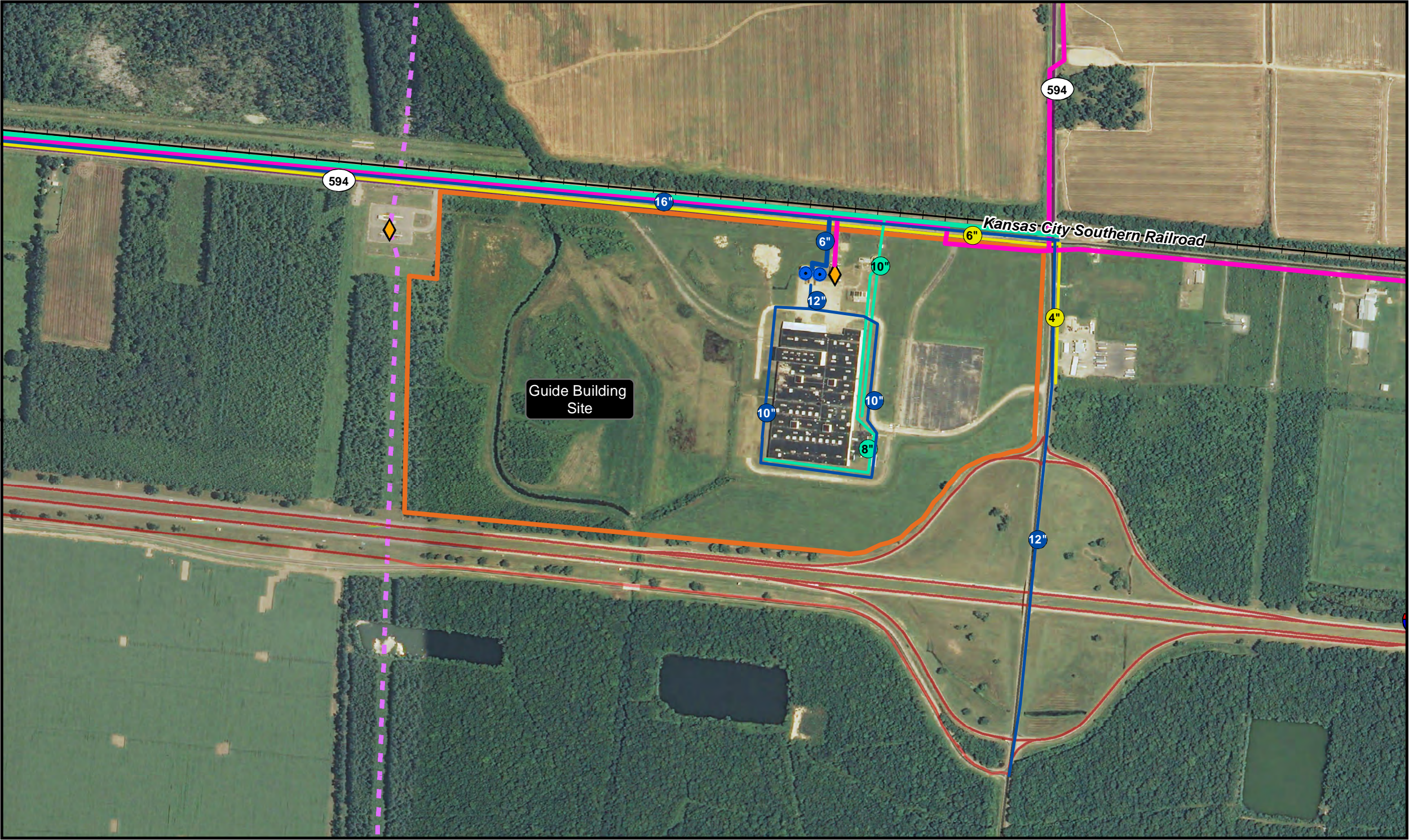
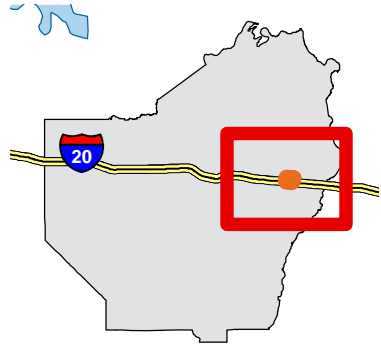


Guide Building Site - 180 Acres - Ouachita Parish

Selected Utility Infrastructure Map

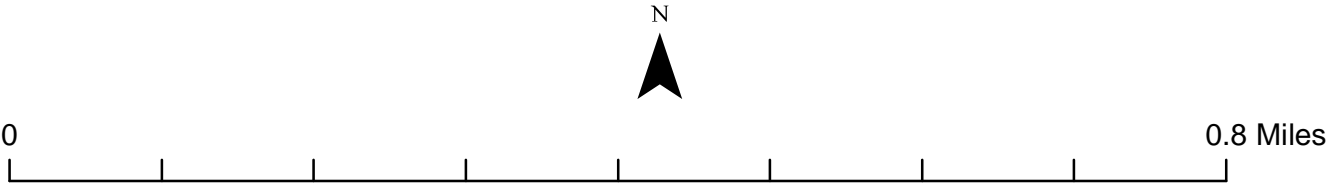


Ouachita Parish



- Potential Site
- Railroad
- Substation
- Transmission Power Lines
- 250,000 Gallon Water Tank
- Water Main
- Distribution Natural Gas
- Sewer Lines
- Electrical Distribution Lines
- Interstate
- US Highway
- LA State Highway
- Surface Roads

Source:  
-Aerial Photo: NAIP 2014  
-Base Map: ESRI, US Census, LDOT, LED  
-Utilities: City of Monroe  
-Locations and Boundries are approximated  
GIS Analyst: MDT 10/03/2014  
\*\*Additional Information Available Upon Request\*\*



Mapping conducted by:  
Louisiana Economic Development  
Business Intelligence  
1051 N Third St  
Baton Rouge, Louisiana 70802  
(225) 342-3725  
OpportunityLouisiana.com