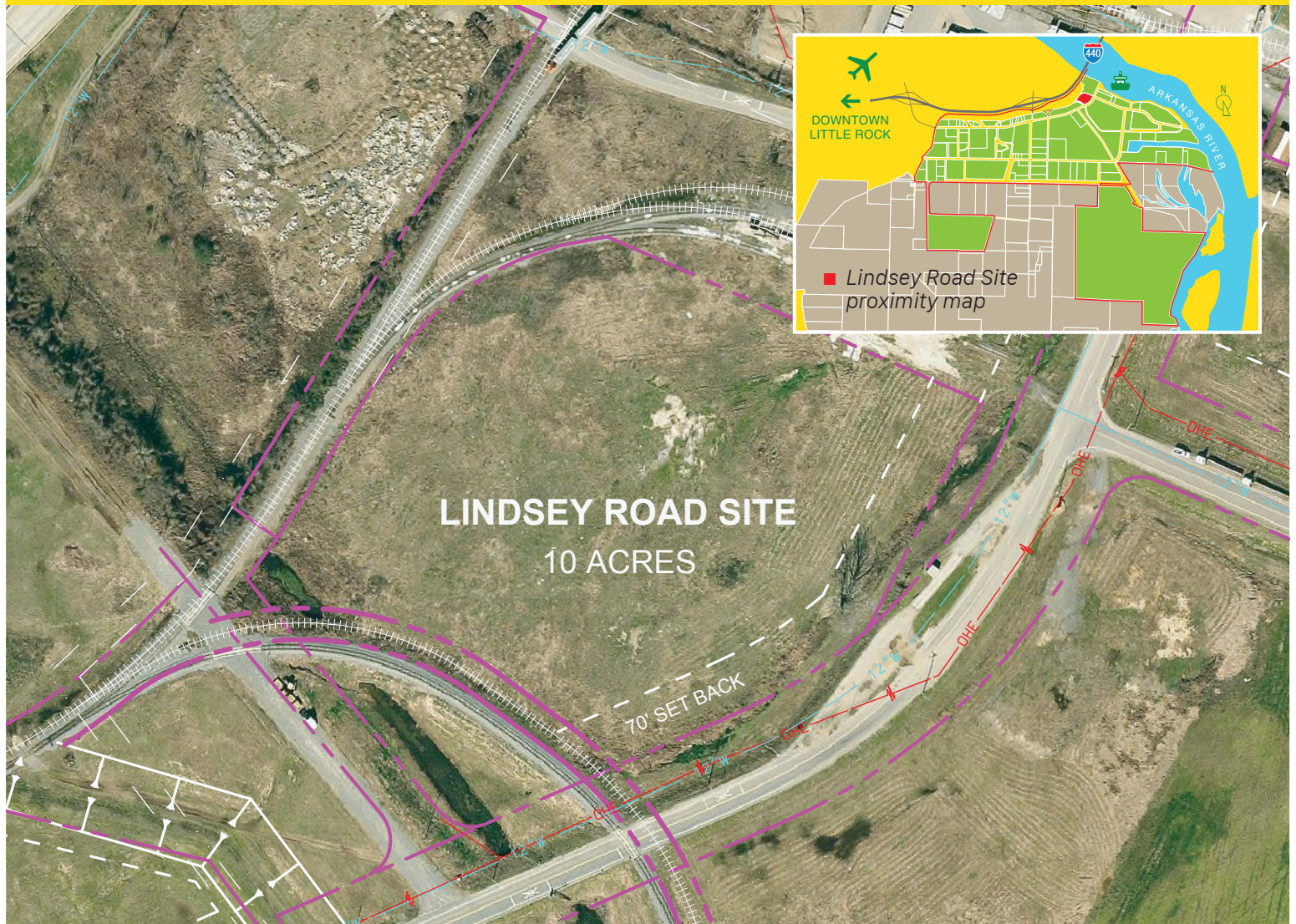


# Lindsey Road Site

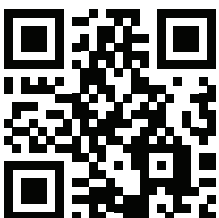
## Close to River Port Terminal

### 10 Acres



- 10 Acres
- Close to River Port Terminal
- Zoned: I-3 Industrial
- Utilities on site: water, gas, electric, sewer
- Access to rail service: Union Pacific and BNSF
- Close proximity to Interstates 40, 30 and 440

Google Port Map



The Little Rock Port Authority Industrial Park is a diverse business community representing more than 40 businesses. It has everything that a manufacturer needs to succeed. At the core of its activity is the Little Rock Port Terminal, the prime location for existing business and future expansion of businesses.



Little Rock Port Authority  
**Centered on global trade.**



Contact:  
**Bryan Day**  
(501) 490-1468  
[bday@lrportauthority.com](mailto:bday@lrportauthority.com)  
10600 Industrial Harbor Drive  
Little Rock, AR 72206  
[LRportauthority.com](http://LRportauthority.com)