

# Exhibit Q.

## Benoit LA-26 Site

### Local Product Pipelines Map





# Benoit LA-26 Site Local Product Pipelines Map

Benoit LA-26 Site  
Jefferson Davis Parish, LA

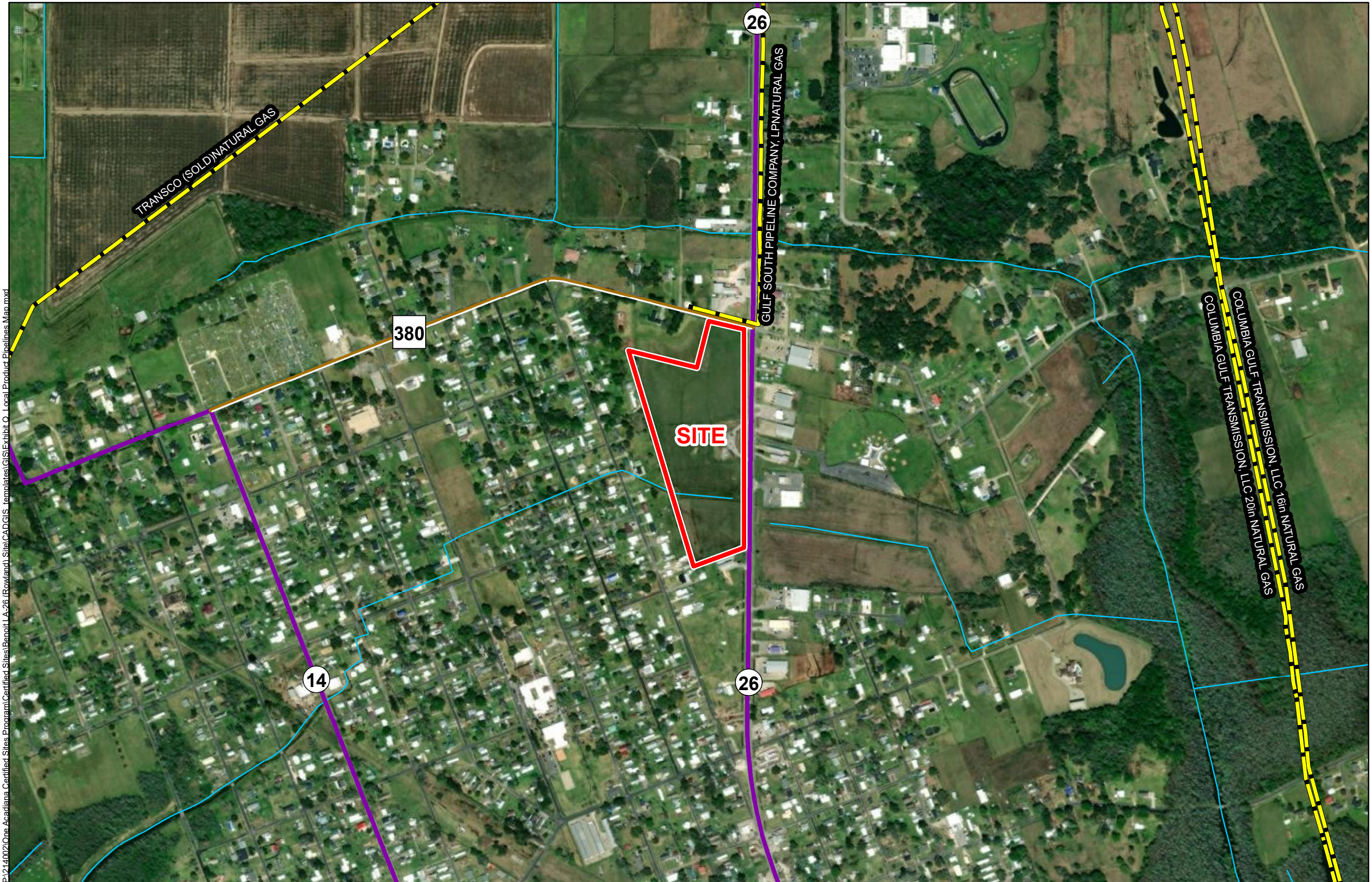
One Acadiana



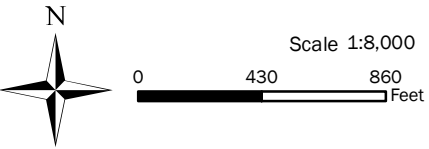
## LEGEND

- Site Boundary (18.37± ac.)
- Stream
- National Pipeline Mapping System
  - NATURAL GAS
- Existing Roadway
  - Urban State Highway
  - Rural State Highway

P:\214002\One Acadiana Certified Sites Program\Certified Sites\Benoit LA-26 (Rowland)\Site\CAD\GIS Templates\GIS\Exhibit O - Local Product Pipelines Map.mxd



- General Notes:
- No attempt has been made by CSRS, Inc. to verify site boundary, title, actual legal ownership, deed restrictions, servitudes, easements, or other burdens on the property, other than that furnished by the client or his representative.
  - Transportation data from 2013 TIGER datasets via U.S. Census Bureau at <ftp://ftp2.census.gov/geo/tiger/TIGER2013>.
  - Utility information from visual inspection and/or the individual utility operators. Exact field location has not been determined by survey. The lines shown are an approximate representation only and may have been offset for depiction purposes.
  - 2015 aerial imagery from USDA-APFO National Agricultural Inventory Project (NAIP) and may not reflect current ground conditions.



Date: 8/10/2023  
Project Number: 214002  
Drawn By: BMS  
Checked By: EEB

