

# Exhibit R.

# Acadiana Regional Airport P5 Site

# Telecommunications Infrastructure

# Map

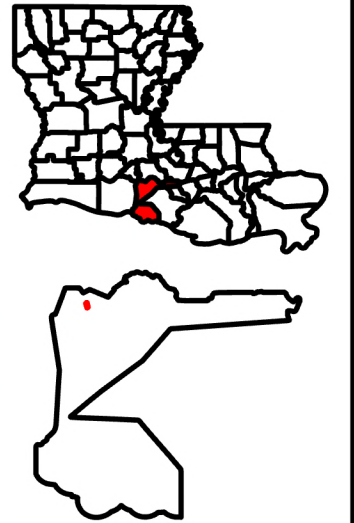


# Acadiana Regional Airport P5 Site Telecommunications Infrastructure Map





Site Exhibit for  
Acadiana Regional Airport P5  
Site  
Iberia Parish, LA

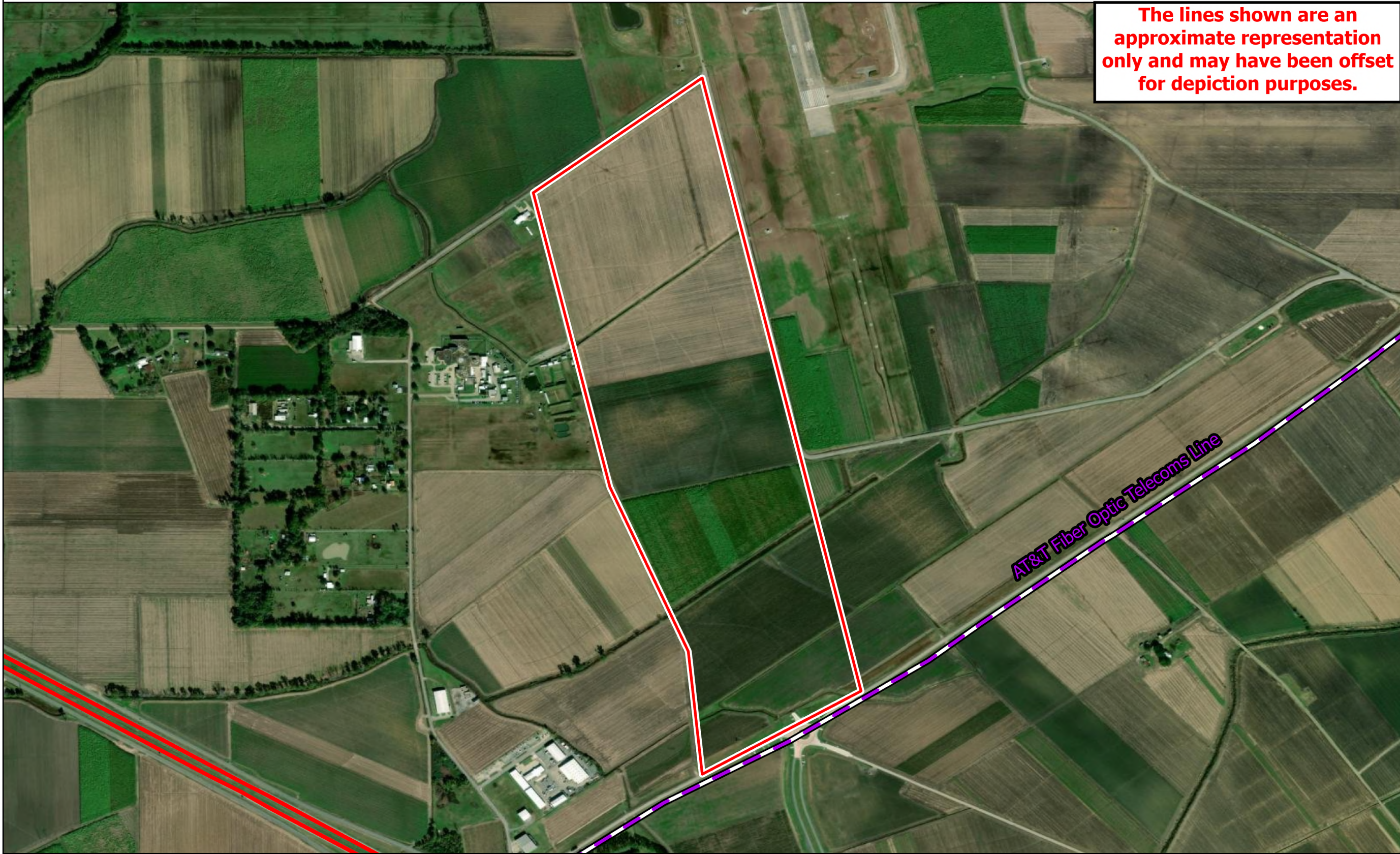
The lines shown are an approximate representation only and may have been offset for depiction purposes.

## One Acadiana

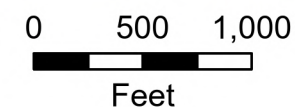


## Legend

-  Site Boundary (±178.95 Ac.)
-  AT&T Fiber Optic Line
-  Major Road
-  US Highway



- General Notes:
1. The information presented herein is for planning purposes only. Further detailed due diligence MUST be completed prior to making decisions regarding the site.
  2. No attempt has been made by CSRS, Inc. to verify site boundary, title, actual legal ownership, deed restrictions, servitudes, easements, or other burdens on the property, other than that furnished by the client or his representative.
  3. Transportation data from 2023 TIGER datasets via U.S. Census Bureau at <LINK><https://www.census.gov/geographies/mapping-files/time-series/geo/tiger-line-file.html></LINK>
  4. Aerial imagery is compiled from multiple different sources to create one cohesive image and may not reflect current ground condition.
  5. Utility information from visual inspection and/or the individual utility operators. Exact field location has not been determined by survey.
  6. Utility data was derived and digitized from information provided by AT&T.



Date: 12/29/2025  
Project Number: 214002  
Drawn By: CFO  
Checked By: EEB

P:\214002\One Acadiana Certified Sites Program\Certified Sites\Acadiana Regional