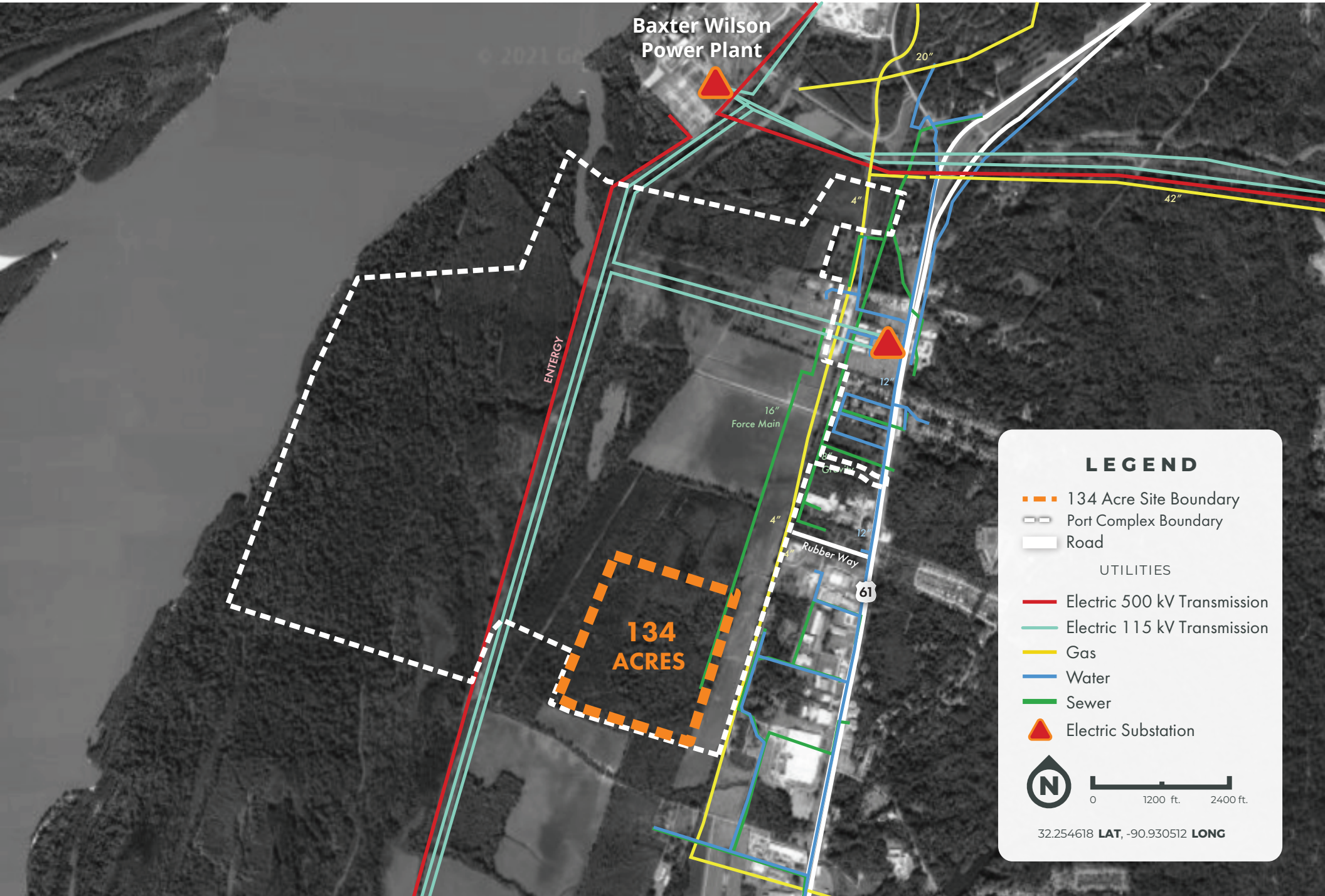




MISSISSIPPI RIVER INLAND PORT COMPLEX

WARREN COUNTY MISSISSIPPI


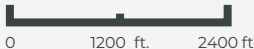


LEGEND

- 134 Acre Site Boundary
- Port Complex Boundary
- Road

UTILITIES

- Electric 500 kV Transmission
- Electric 115 kV Transmission
- Gas
- Water
- Sewer
- Electric Substation

32.254618 **LAT**, -90.930512 **LONG**