
WEST PORT SITE

SITE EVALUATION MAP BOOK

WEST PORT SITE

TABLE OF CONTENTS

TRANSPORTATION, REGIONAL

TRANSPORTATION, IMMEDIATE

PORT VIEW

AERIAL

TOPOGRAPHIC MAP

ELEVATION CONTOURS

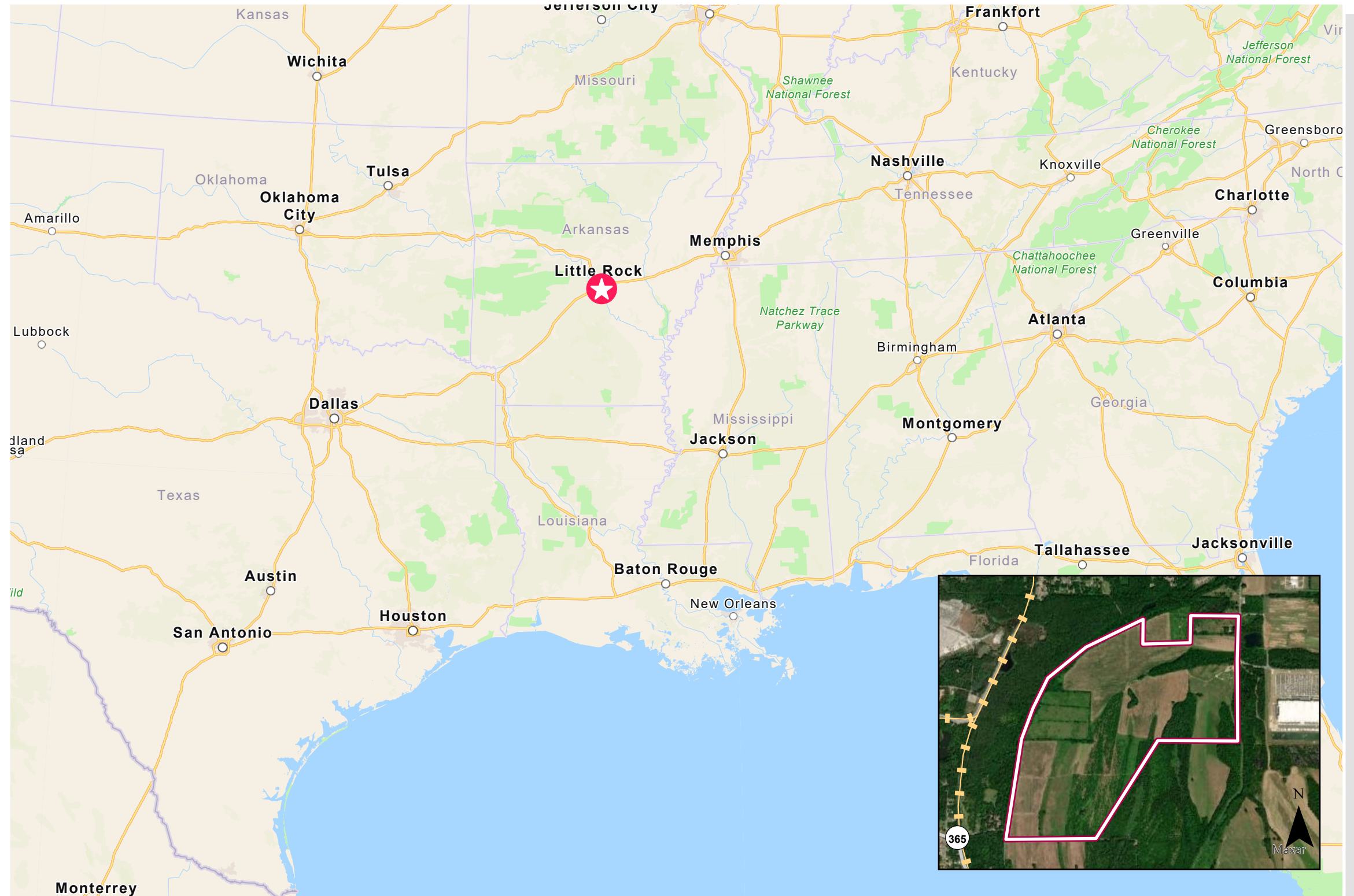
FEMA FLOOD HAZARDS NATIONAL

WETLANDS INVENTORY

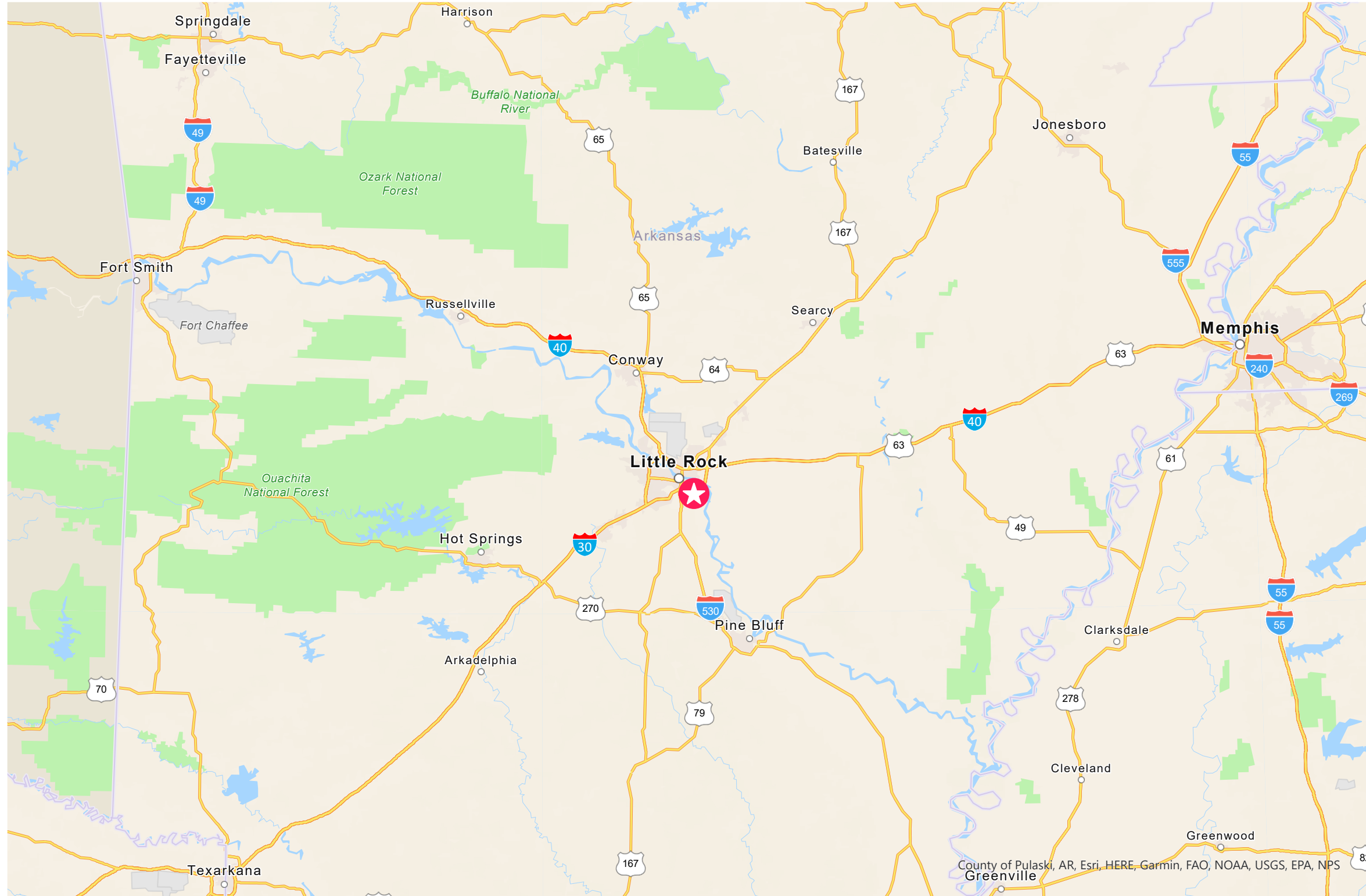
UTILITY MAP

PIPELINE INFRASTRUCTURE

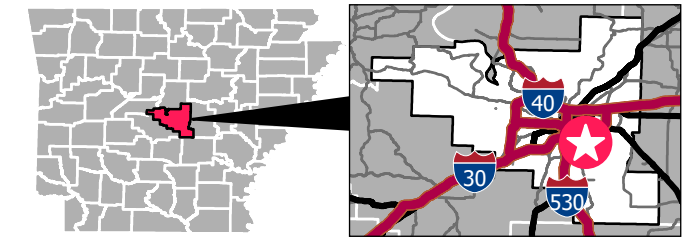
ENTERGY'S ELECTRICAL INFRASTRUCTURE



WEST PORT SITE / TRANSPORTATION, REGIONAL



PULASKI COUNTY



LEGEND

 West Port Site Location

SOURCE

World Navigation Map, ESRI

SCALE

0 25 50 Miles

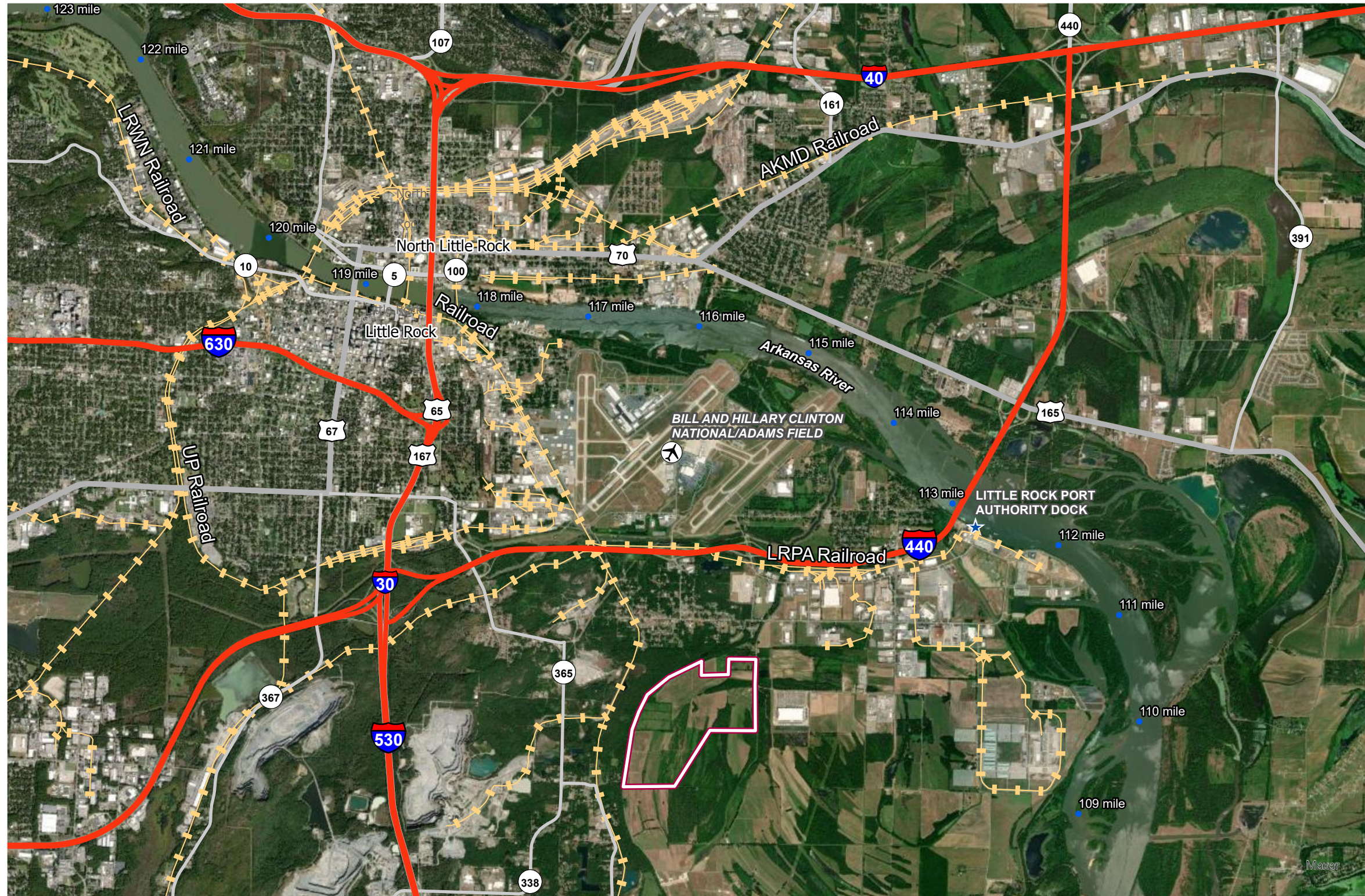
0 31.68 63.36 Kilometers



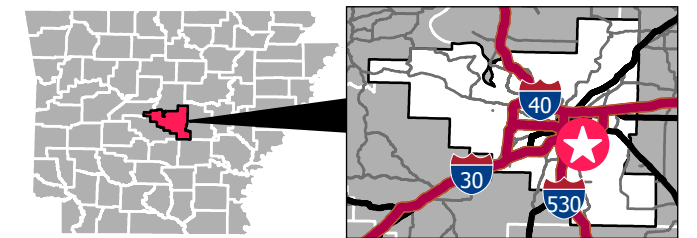
Date: 04/2023
Created by: RPG

These drawings are provided merely to assist in economic development efforts. The Entergy Companies make no representations or warranties whatsoever regarding the accuracy or completeness of any information contained herein nor the condition or suitability of any properties. Users should direct inquiries about any property to the listing broker for that property.

WEST PORT SITE / TRANSPORTATION, IMMEDIATE






PULASKI COUNTY



LEGEND

-  Property Boundary
-  Railroads
-  Ports
-  Commercial & Public Airports
-  River Mile Markers

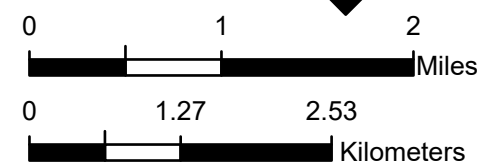
Primary & Secondary Roads

-  Interstate Highway
-  U.S. Highway
-  State Highway

SOURCE

Roads: Census/Tiger database 2021
Railroads: Federal Railroad Administration, Bureau of Transportation Statistics, ESRI, 2021

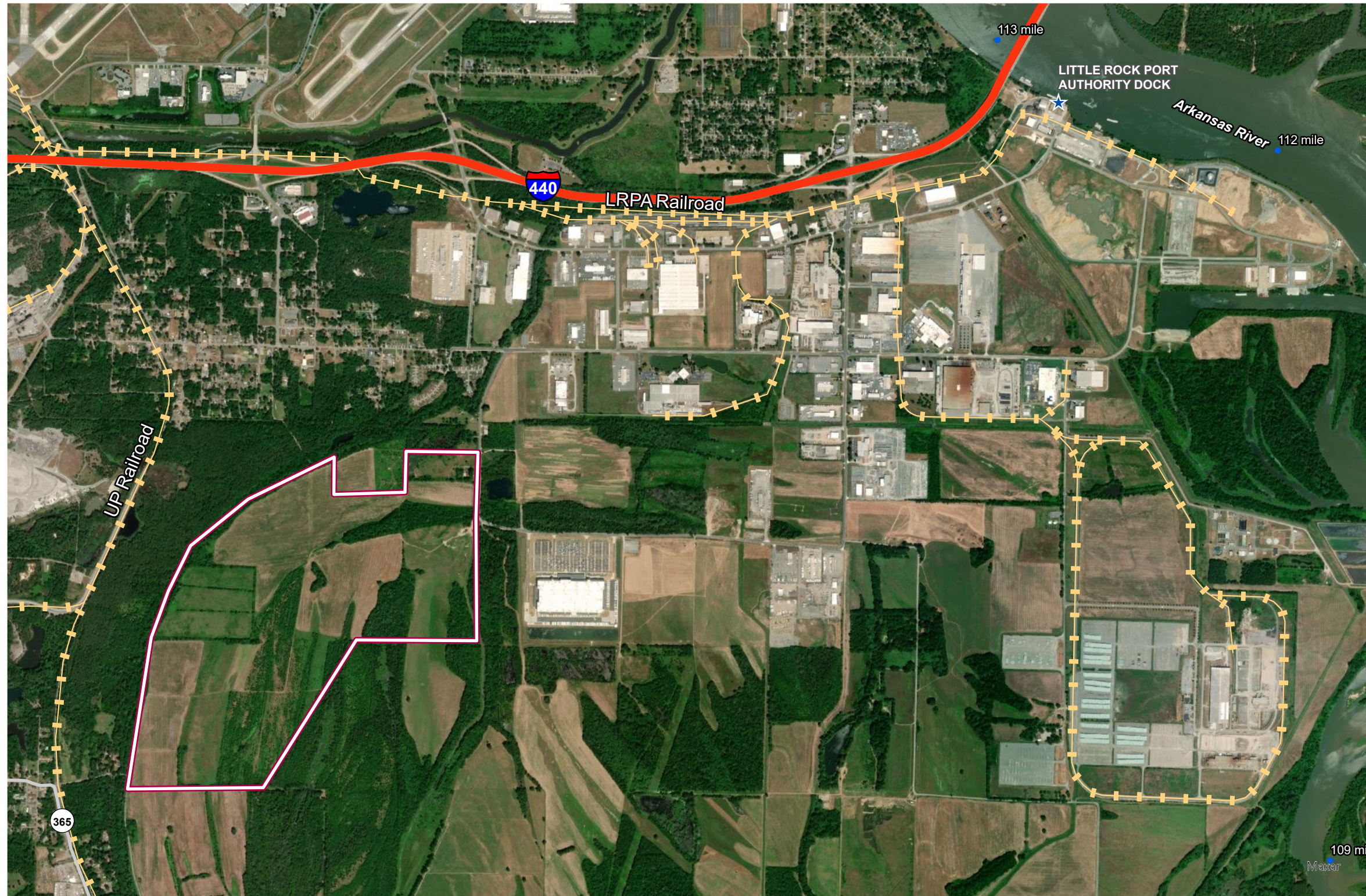
SCALE



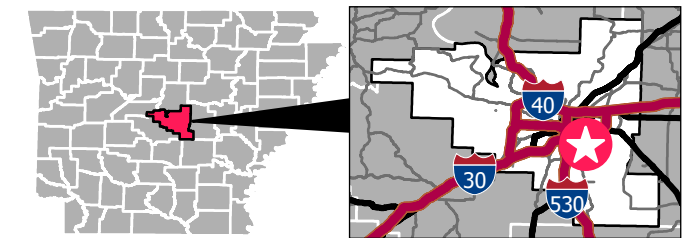
Date: 04/2023
Created by: RPG

These drawings are provided merely to assist in economic development efforts. The Entergy Companies make no representations or warranties whatsoever regarding the accuracy or completeness of any information contained herein nor the condition or suitability of any properties. Users should direct inquiries about any property to the listing broker for that property.





WEST PORT SITE / PORT VIEW





PULASKI COUNTY



LEGEND

-  Railroads
-  Ports
-  Commercial & Public Airports
-  River Mile Markers

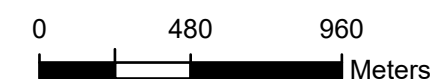
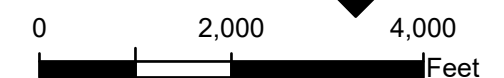
Primary & Secondary Roads

-  Interstate Highway
-  State Highway

SOURCE

Roads: Census/Tiger database 2021
Railroads: Federal Railroad Administration, Bureau of Transportation Statistics, ESRI, 2021

SCALE



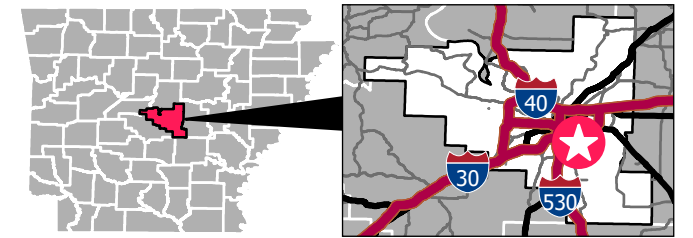
Date: 04/2023
Created by: RPG

These drawings are provided merely to assist in economic development efforts. The Entergy Companies make no representations or warranties whatsoever regarding the accuracy or completeness of any information contained herein nor the condition or suitability of any properties. Users should direct inquiries about any property to the listing broker for that property.




WEST PORT SITE / AERIAL



PULASKI COUNTY



LEGEND

-  Property Boundary
-  Railroads
-  State Highway

SOURCE

Highways: Tiger 2022
Rail: Bureau of Transportation Stats

SCALE

0 1,250 2,500
US Feet

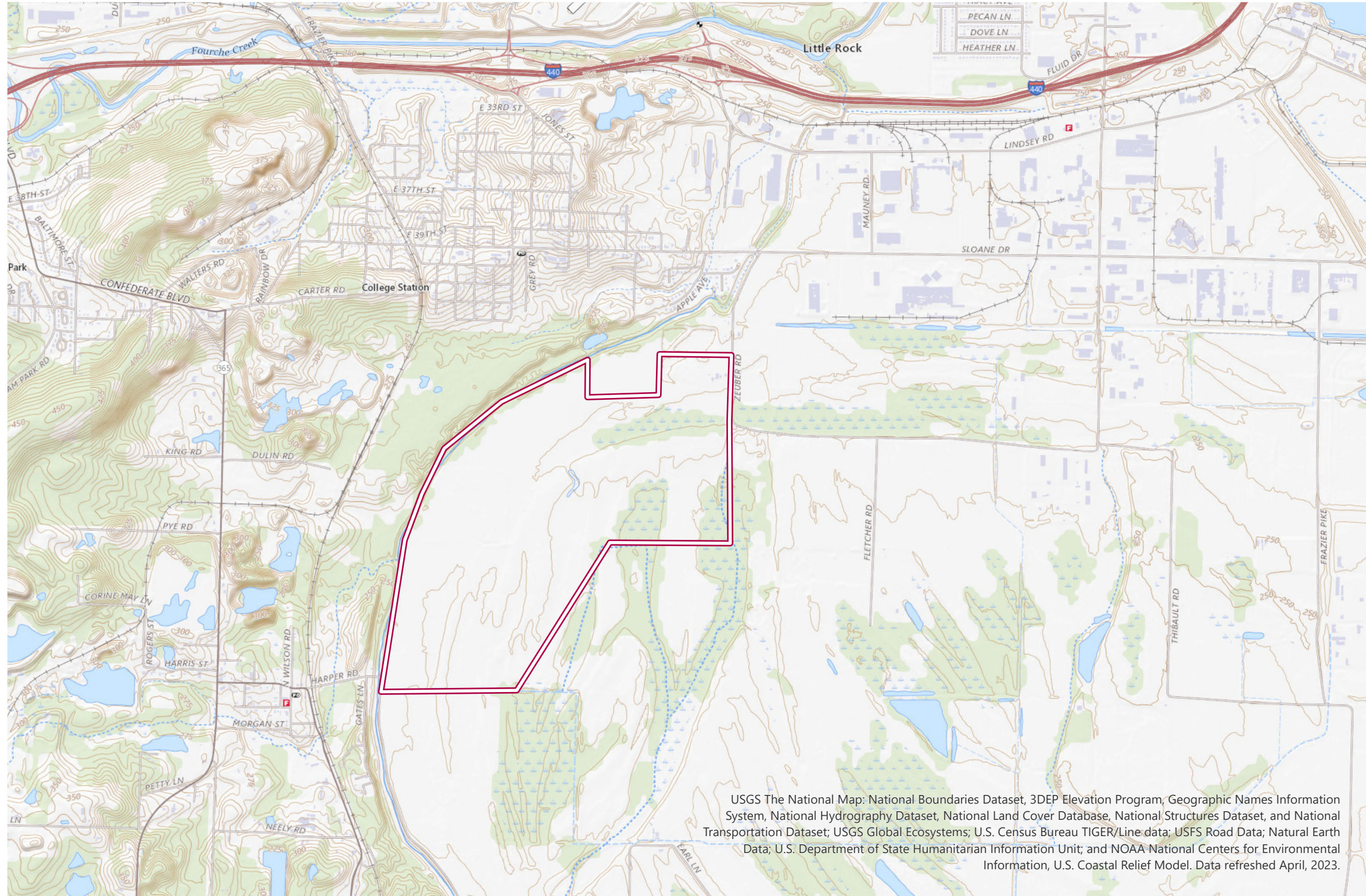
0 300 600
Meters

N

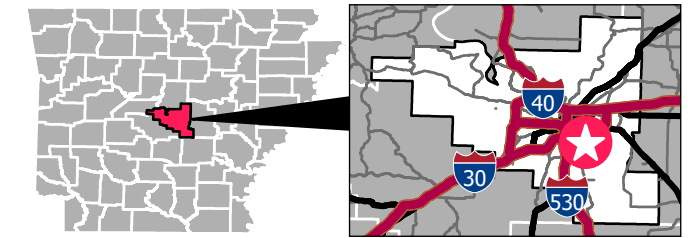
Date: 04/2023
Created by: RPG

These drawings are provided merely to assist in economic development efforts. The Entergy Companies make no representations or warranties whatsoever regarding the accuracy or completeness of any information contained herein nor the condition or suitability of any properties. Users should direct inquiries about any property to the listing broker for that property.

WEST PORT SITE / TOPOGRAPHIC MAP



PULASKI COUNTY



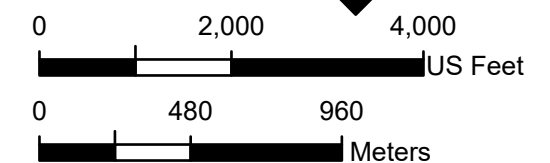
LEGEND

 Property Boundary

SOURCE

USGS, The National Map

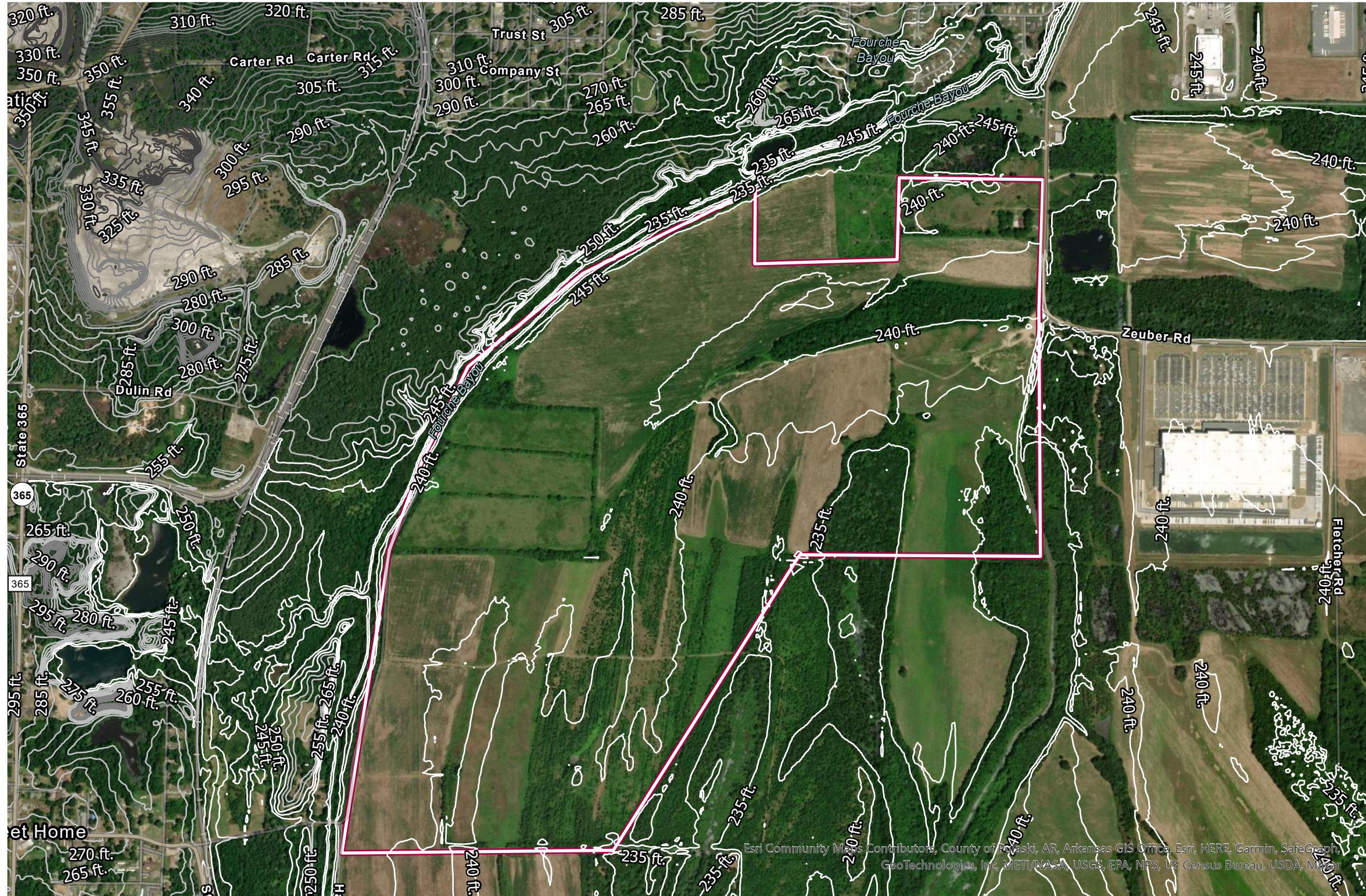
SCALE



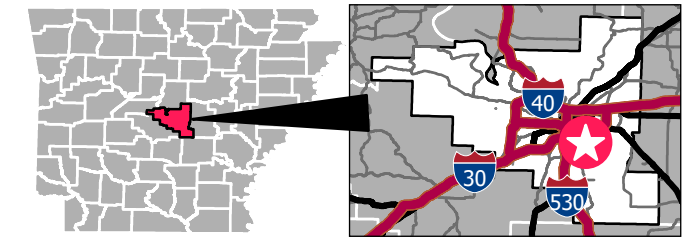
N
Date: 04/2023
Created by: RPG

These drawings are provided merely to assist in economic development efforts. The Entergy Companies make no representations or warranties whatsoever regarding the accuracy or completeness of any information contained herein nor the condition or suitability of any properties. Users should direct inquiries about any property to the listing broker for that property.

WEST PORT SITE / ELEVATION CONTOURS



PULASKI COUNTY



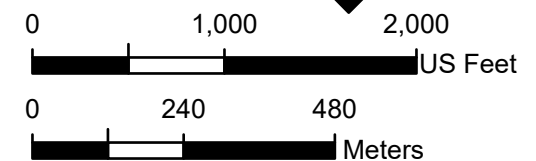
LEGEND

- Property Boundary
- Elevation Contours (ft.)**
- 230.0 - 255.0
- 255.1 - 285.0
- 285.1 - 325.0
- 325.1 - 370.0
- 370.1 - 450.0

SOURCE

Elevation Source: Airbus, USGS, NGA, NASA, CGIAR, NLS, OS, NMA, Geodatastyrelsen, GSA, GSI and the GIS User Community, 10/2022

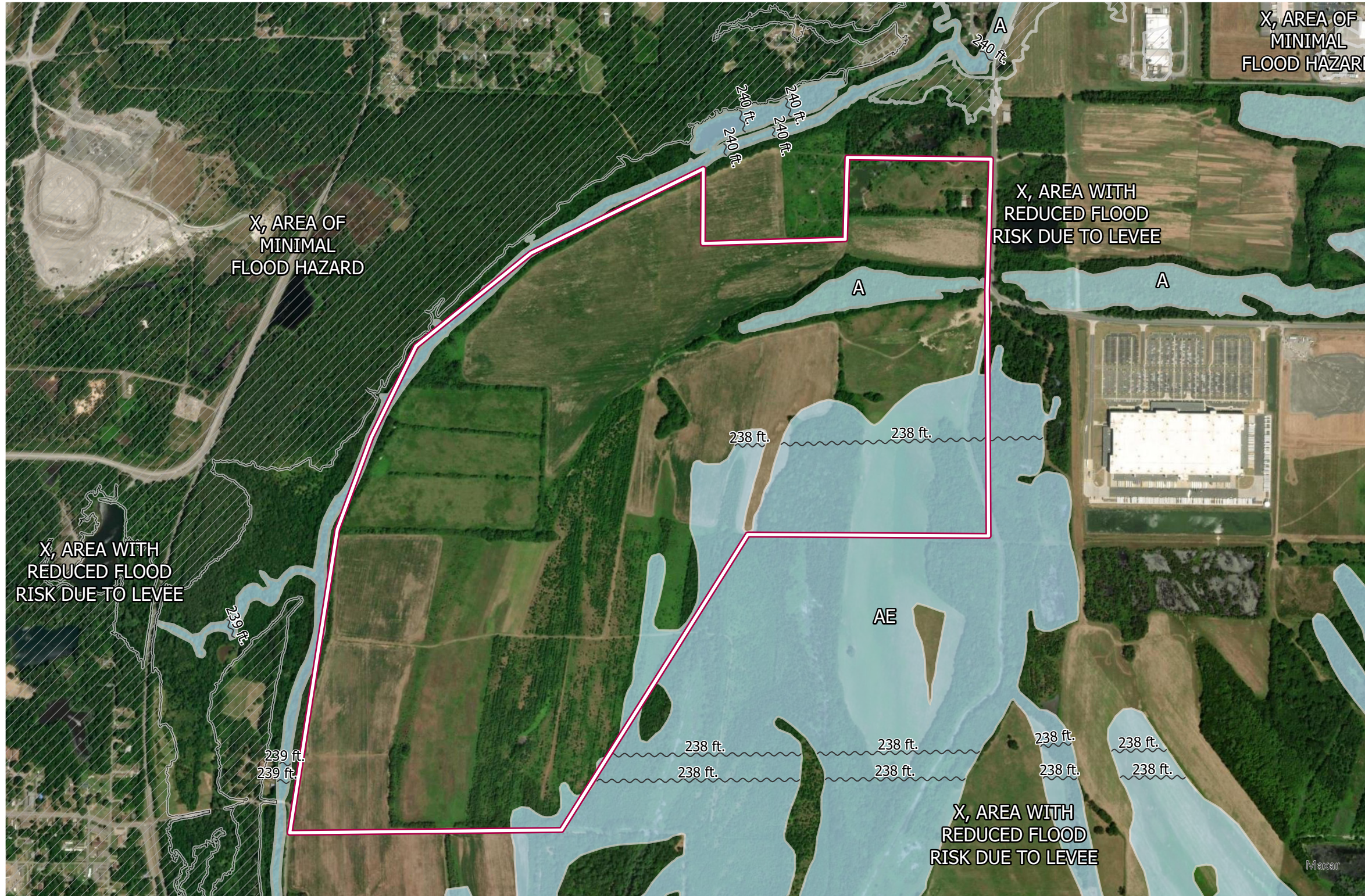
SCALE



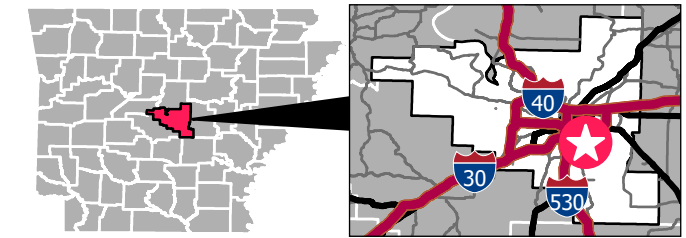
Date: 04/2023
 Created by: RPG

These drawings are provided merely to assist in economic development efforts. The Entergy Companies make no representations or warranties whatsoever regarding the accuracy or completeness of any information contained herein nor the condition or suitability of any properties. Users should direct inquiries about any property to the listing broker for that property.


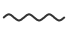

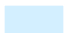

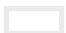
WEST PORT SITE / FEMA FLOOD HAZARDS



PULASKI COUNTY



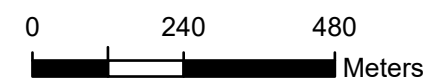
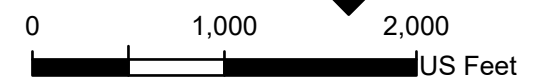
LEGEND

-  Property Boundary
-  Base Flood Elevation
- FEMA Flood Hazards**
- Flood Zone, Subtype**
-  A,
-  AE,
-  X, AREA OF MINIMAL FLOOD HAZARD
-  X, AREA WITH REDUCED FLOOD RISK DUE TO LEVEE

SOURCE

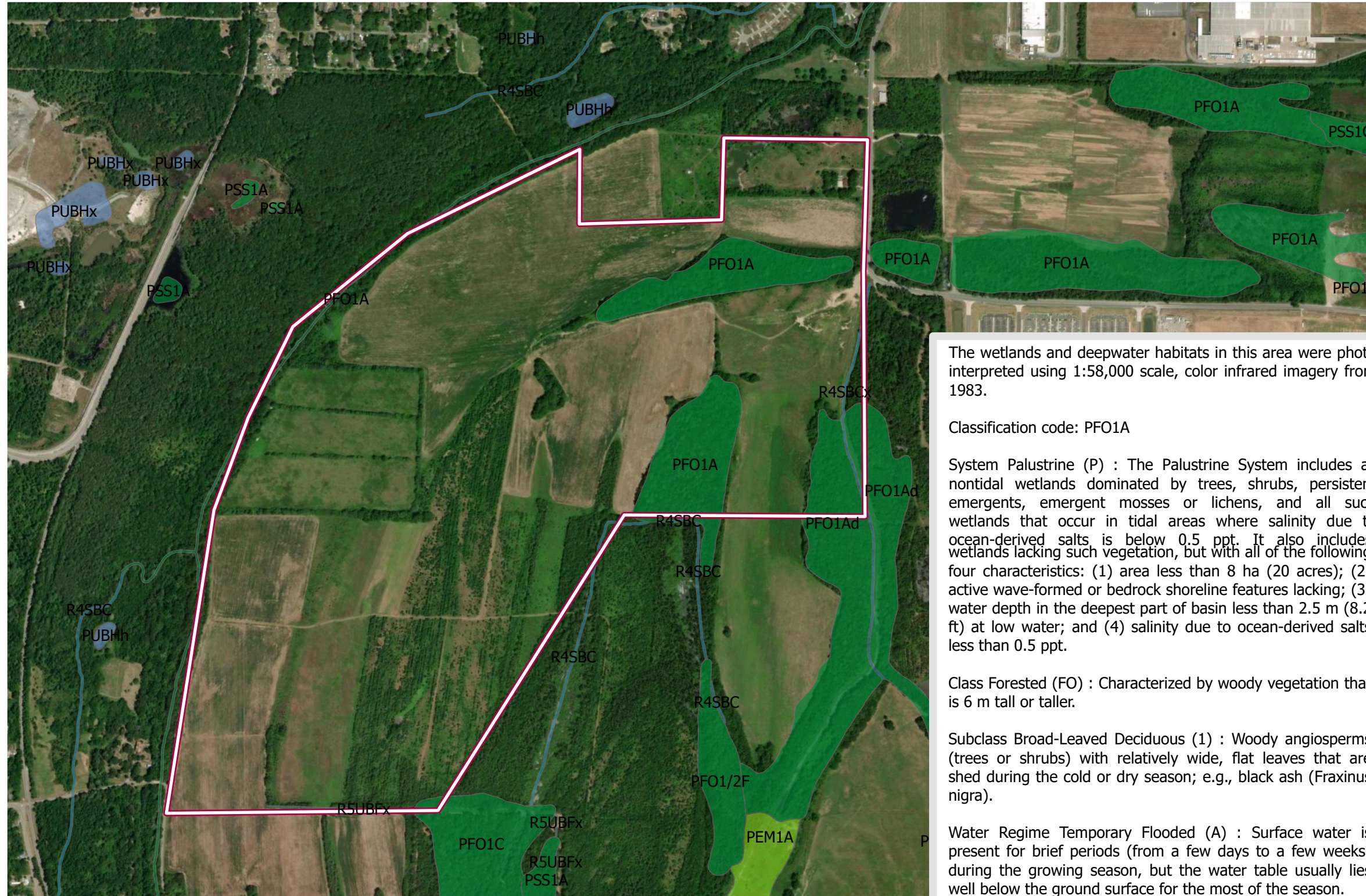
Flood Hazards: FEMA's National Flood Hazard Layer

SCALE



These drawings are provided merely to assist in economic development efforts. The Entergy Companies make no representations or warranties whatsoever regarding the accuracy or completeness of any information contained herein nor the condition or suitability of any properties. Users should direct inquiries about any property to the listing broker for that property.

WEST PORT SITE / NATIONAL WETLAND INVENTORY



The wetlands and deepwater habitats in this area were photo interpreted using 1:58,000 scale, color infrared imagery from 1983.

Classification code: PFO1A

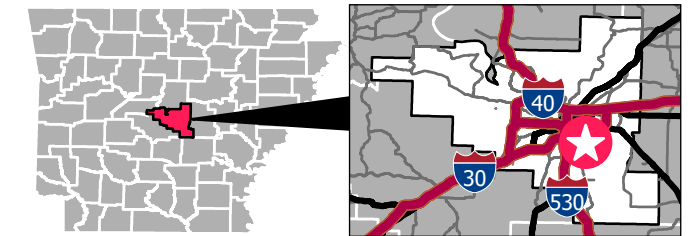
System Palustrine (P) : The Palustrine System includes all nontidal wetlands dominated by trees, shrubs, persistent emergents, emergent mosses or lichens, and all such wetlands that occur in tidal areas where salinity due to ocean-derived salts is below 0.5 ppt. It also includes wetlands lacking such vegetation, but with all of the following four characteristics: (1) area less than 8 ha (20 acres); (2) active wave-formed or bedrock shoreline features lacking; (3) water depth in the deepest part of basin less than 2.5 m (8.2 ft) at low water; and (4) salinity due to ocean-derived salts less than 0.5 ppt.

Class Forested (FO) : Characterized by woody vegetation that is 6 m tall or taller.

Subclass Broad-Leaved Deciduous (1) : Woody angiosperms (trees or shrubs) with relatively wide, flat leaves that are shed during the cold or dry season; e.g., black ash (*Fraxinus nigra*).

Water Regime Temporary Flooded (A) : Surface water is present for brief periods (from a few days to a few weeks) during the growing season, but the water table usually lies well below the ground surface for the most of the season.

PULASKI COUNTY



LEGEND

Wetlands: HU8_11110207

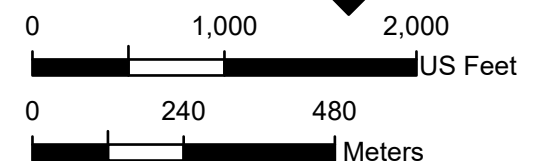
Wetland Type

- Freshwater Emergent Wetland
- Freshwater Forested/Shrub Wetland
- Freshwater Pond
- Riverine

SOURCE

Wetland: U.S. Fish and Wildlife Service and the National Wetlands Inventory. Download Date: 2022_10

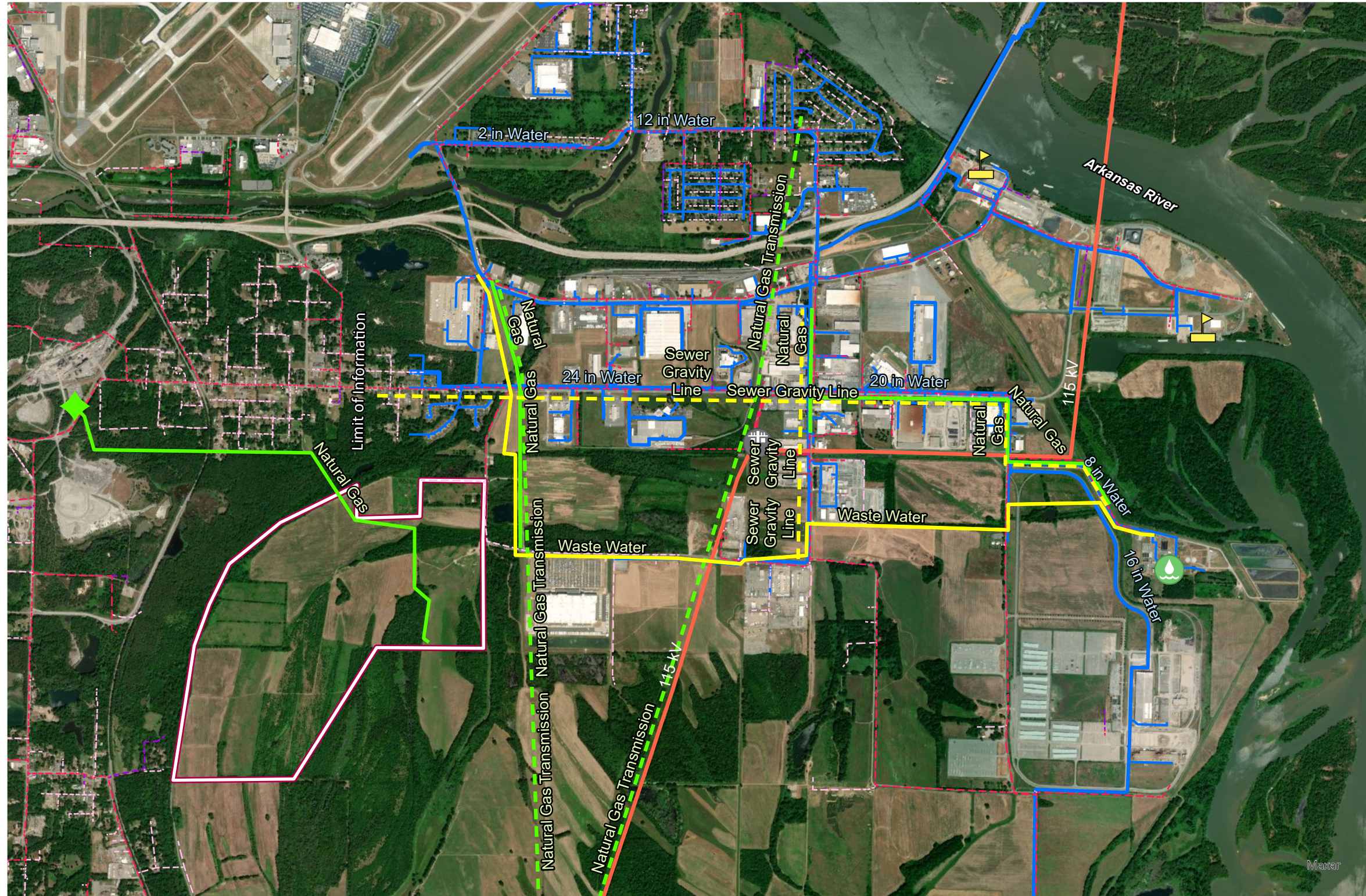
SCALE



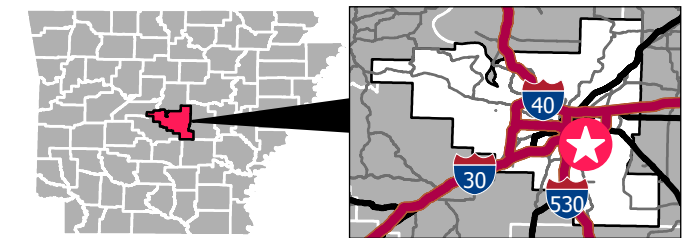
Date: 04/2023
 Created by: RPG

These drawings are provided merely to assist in economic development efforts. The Entergy Companies make no representations or warranties whatsoever regarding the accuracy or completeness of any information contained herein nor the condition or suitability of any properties. Users should direct inquiries about any property to the listing broker for that property.

WEST PORT SITE / UTILITY MAP



PULASKI COUNTY



LEGEND

- | | |
|-----------------------------|--------------------------------------|
| Property Boundary | Pipelines |
| Pressure Regulator Station | Natural Gas |
| Waste Water Treatment Plant | Natural Gas Transmission |
| Electrical Substation | Sewer Gravity Line |
| Dock Location | Sewer Force Main |
| Waterlines | Electrical Transmission Lines |
| 2"-8" Waterline | 115 kV |
| 10"-18" Waterline | Electrical Distribution Lines |
| 20"-24" Waterline | System Voltage, Phase |
| | 13.8 kV, Single Phase |
| | 13.8 kV, Two Phase |
| | 13.8 kV, Three Phase |

SOURCE

Utilities: Port of Little Rock, Ark 2020
Electrical: Entergy 2022

SCALE

0 2,250 4,500
Feet

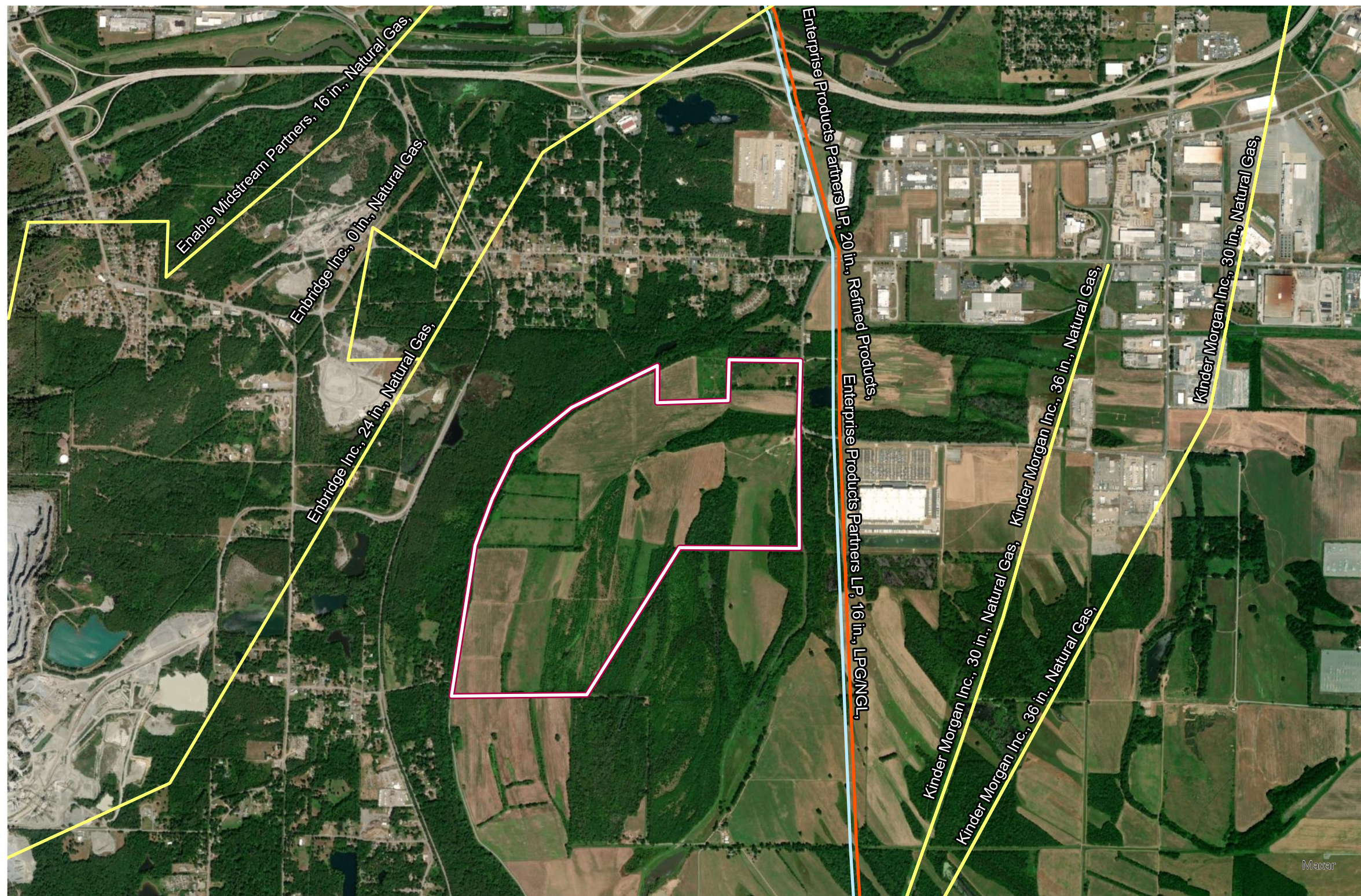
0 540 1,080
Meters



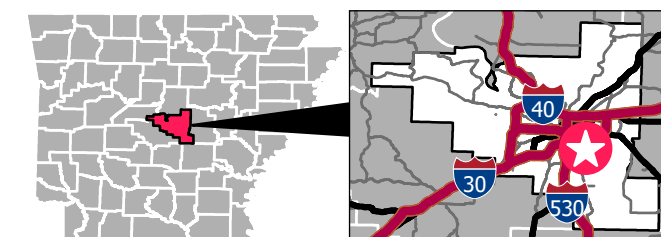
Date: 04/2023
Created by: RPG

These drawings are provided merely to assist in economic development efforts. The Entergy Companies make no representations or warranties whatsoever regarding the accuracy or completeness of any information contained herein nor the condition or suitability of any properties. Users should direct inquiries about any property to the listing broker for that property.

WEST PORT SITE / PIPELINE INFRASTRUCTURE



PULASKI COUNTY



LEGEND

Pipelines

- LPG/NGL,
- Natural Gas,
- Refined Products,

SOURCE

Pipeline: Endeavor MAPSearch, 2021

SCALE

0 2,000 4,000 US Feet

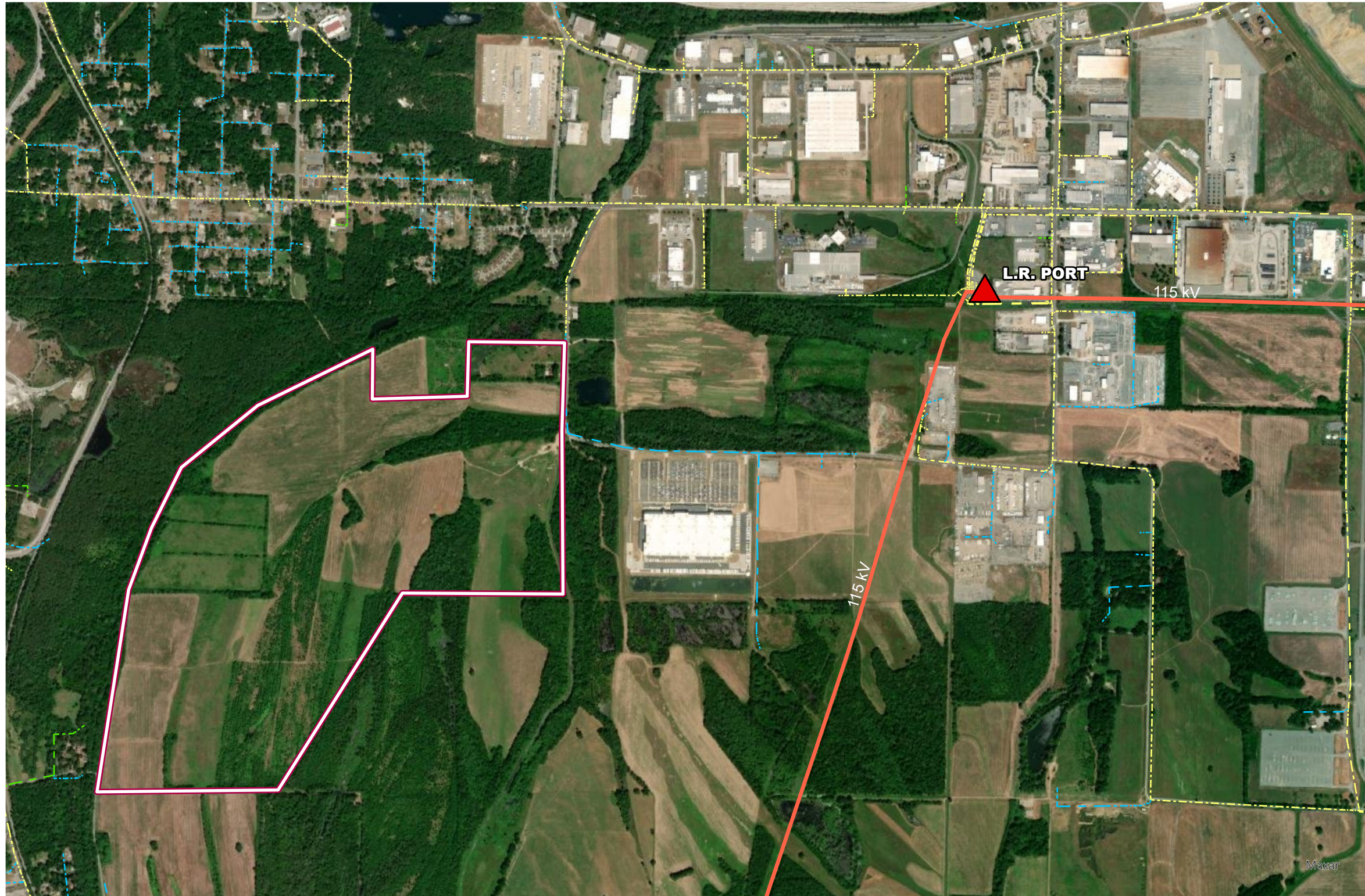
0 480 960 Meters

N

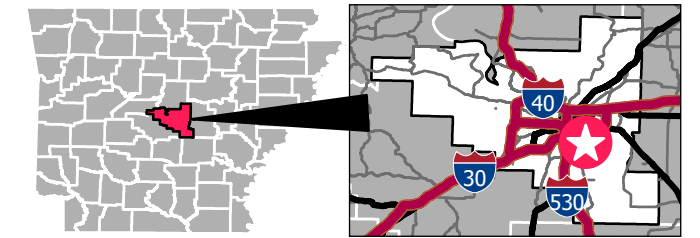
Date: 04/2023
Created by: RPG

These drawings are provided merely to assist in economic development efforts. The Entergy Companies make no representations or warranties whatsoever regarding the accuracy or completeness of any information contained herein nor the condition or suitability of any properties. Users should direct inquiries about any property to the listing broker for that property.






WEST PORT SITE / ENTERGY'S ELECTRICAL INFRASTRUCTURE



PULASKI COUNTY



LEGEND

-  Electrical Substations
- Electrical Transmission Lines**
 -  115 kV
- Electrical Distribution Lines**
 -  13.8 kV, Single Phase
 -  13.8 kV, Two Phase
 -  13.8 kV, Three Phase

SOURCE

Electrical: Entergy 2022

SCALE

0 1,500 3,000 Feet

0 360 720 Meters



Date: 10/2022
Created by: RPG

These drawings are provided merely to assist in economic development efforts. The Entergy Companies make no representations or warranties whatsoever regarding the accuracy or completeness of any information contained herein nor the condition or suitability of any properties. Users should direct inquiries about any property to the listing broker for that property.